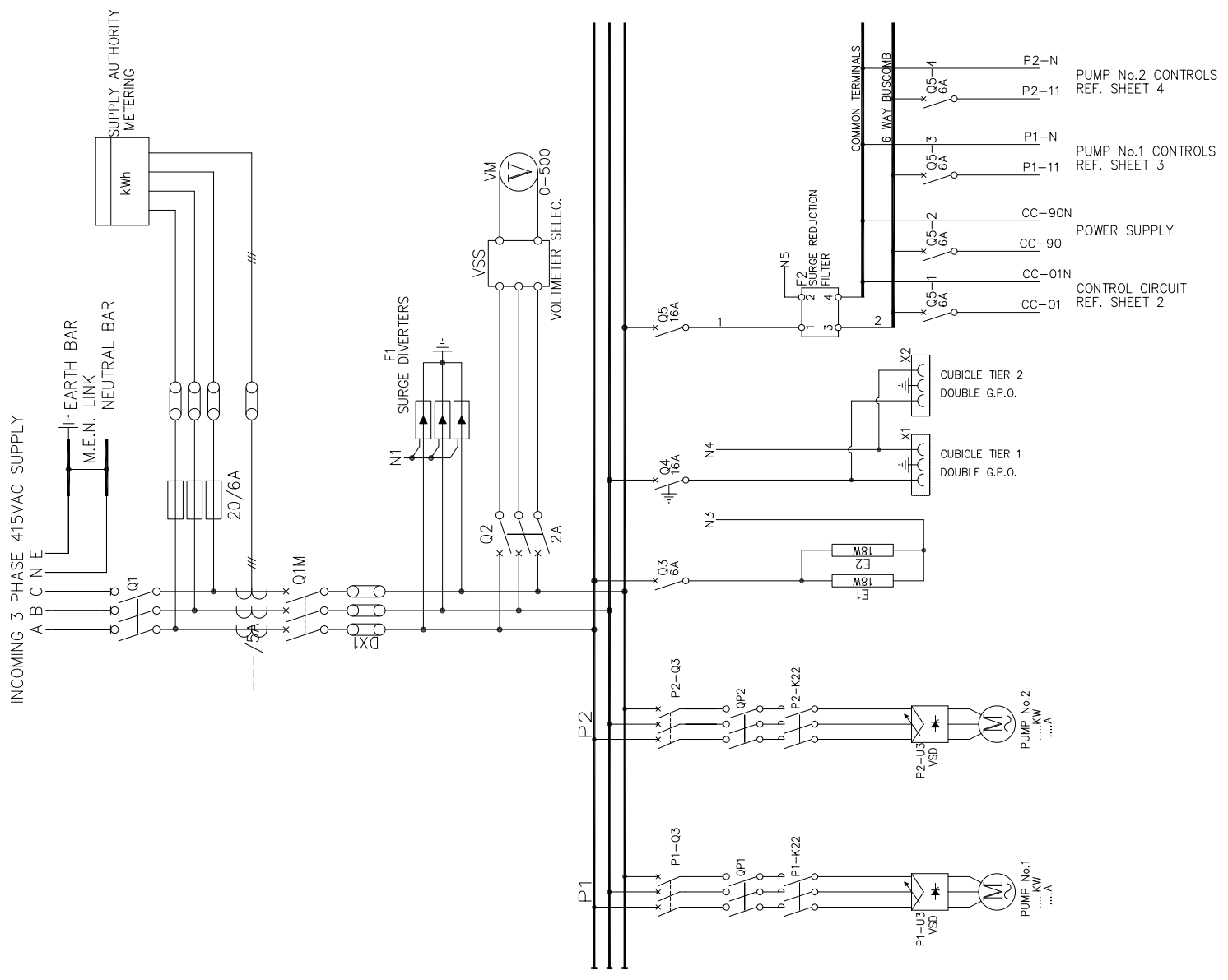


Item	Description	Cat No.	Qty	Manufacturer
QP1, QP2	Motor Isolator		2	
Q1M	Circuit Breaker		1	
MTRA	Backup Level Relay MTRA or approved equal	MTRA	1	Multitrode
DX1	Single Pole Distribution Block		3	
F1	Surge Diverter Diniline 40kA or approved equal	DSD140-2S	3	(ECO) Critec
Q2	Circuit Breaker		1	
VSS	Voltmeter Selector Switch PH-PH-N		1	
VM	Voltmeter Direct Connect 72x72mm 0-500V		1	
Q3, Q5-1 to 4	Circuit Breaker 1 Pole 16Amp		5	
Q4	Circuit Breaker 1 Pole 16Amp		1	
RCD	RCD Circuit Breaker RCBO 16A 1P 30mA		1	
E1,E2	Light Fittings 13W c/w Switch		2	
F2	Surge Filter Diniline 10A 1P or approved equal	DSF-10A-275V	2	(ECO) Critec
X1,X2	Double GPO's		2	
T1	Transformer 415/240/24Vac 63VA		1	
CC-Q8	Circuit Breaker 4A		1	
CC-S9	Selector Switch Head 3Pos. Switch Body 2-N/O		1	
PS13	Power Supply 240/24Vdc 2A		1	
CC-Q15	Circuit Breaker 6A		1	
CC-K17,K21,K41,K42, CC-K43,K44,K45, CC-K41T	Plug In Relay +Led 4 C/O 5A Plug In Relay +Led 4 C/O 5A (with reverse emf diode) Timer Delay On 1 C/O Multivoltage		4	
CC-H43	Pilot Light 24V (Green)		1	
CC-P58	Panel Digital Indicator or approved equal		1	VEGA/HAWK
P1-A,P2-A	Ammeter 4-20mA 72x72mm		2	
CCS48a,S48b	Limit Switch 1-N/O 1-N/C		2	
P1,P2-Q3	Circuit Breaker		2	
P1,P2-Q6	Circuit Breaker 4A		2	
P1,P2-U3	Variable speed drive with modbus link		2	
P1,P2-K22	Contactor 3P 415V		2	
P1,P2-K25	Seal fail relay or approved equal	Tritronics Seal fail relay	2	Control Logic
P1,P2-S9	Selector Switch Head 3Pos Switch Body 2-N/O		2	
	Terminal 4mm Grey		50	
	Terminal 4mm		8	
	End plate 16mm		5	
	End Stop		1	
	Thermostat		6	
CC-E1	Pilot Light 240V (Red)		2	
P1,P2-H20	Motor Isolator		2	
QP1, QP2	Cooling Fans		2	
CC-E2,E3	Well washer solenoid valve		2	
VS1	Level transmitter or approved equal		1	VEGA/HAWK, Hydrostatic, Ultrasonic Kingfisher
RTU	Kingfisher SII or approved equal		1	
	RTU Power supply		1	
	Radio		1	
	Coax Surge diverter		1	
P1,P2	Pump Motors		2	
Level Probe	2m Probe Multitrode or equal		1	Multitrode
FS-1	Float switch 1N/C		1	
CC-S10	Selector switch		1	
B1	7.0 AH 12Volt Sealed Lead Acid Battery		1	
CV1	12VDC/24VDC Converter 2A		1	
CC-16	Circuit Breaker		1	
CF1	Control Fuse		1	
			2	



PROJECT No. SSI2
DATE: MICROPLUMED
SHEET 1 OF 6
DRAWING No. 06-07-871

SCHEMATIC WIRING DIAGRAM
WASTEWATER PUMP STATION
VARIABLE SPEED DRIVE - FUJI

Gold Coast City Council
GOLD COAST CITY COUNCIL
PO BOX 5042, GOLD COAST MC 9729

Gold Coast Water
FOR PROJECT ENQUIRIES REFEREXT
ACCEPTED DATE

DESIGN NOT TO BE AMENDED WITHOUT REFERENCE TO DESIGN PROJECT OFFICER

PROJECT OFFICER	
DESIGN/DRAWN	NJK
DWG CHD	
DES CHD	
APPROVED	

PROJECT FILE NAME: C:\BUS.REC\06-07-871
RECORDS FILE NO. SURVEY FOLDER NO.
SURVEYED BY / DATE SURVEY CHD

BAR SCALES

DO NOT SCALE, USE FIGURED DIMENSIONS ONLY

AMENDMENT No. APPROVED

DATE

TELEPHONE: (07) 5581 6661

Gold Coast Water