



Gold Coast Beach Nourishment Project

June 2017 to October 2017

Over the past few decades our beaches have been hit by a number of significant storms resulting in coastal erosion. Erosion poses a risk to beachfront infrastructure and beach use.

To help protect our beaches, we will be delivering the Gold Coast Beach Nourishment Project to increase the volume of sand at our most vulnerable beaches. The additional sand will buffer erosion during future storms.

Nourishment works will take place at Palm Beach and from Miami to Main Beach.

We know more about our beaches than ever before thanks to extensive research and improved technology including the study of coastal data from wave buoys, beach surveys, camera monitoring and computer modelling. This data will be used to inform the sand placement.

Using a design with nature approach, a specialised dredge vessel will transfer clean sand from our offshore sand reserves to the nearshore wave breaking zone by bottom dumping and rainbowing.

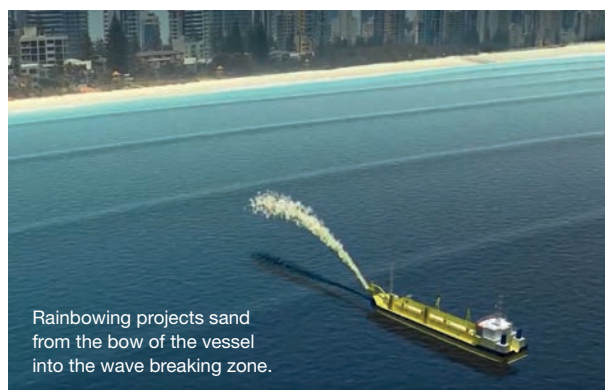
Bottom dumping releases sand into the wave breaking zone through the vessel hull. Rainbowing projects sand from the bow of the vessel into the wave breaking zone.

You might notice some temporary changes to water clarity while the additional sand settles.

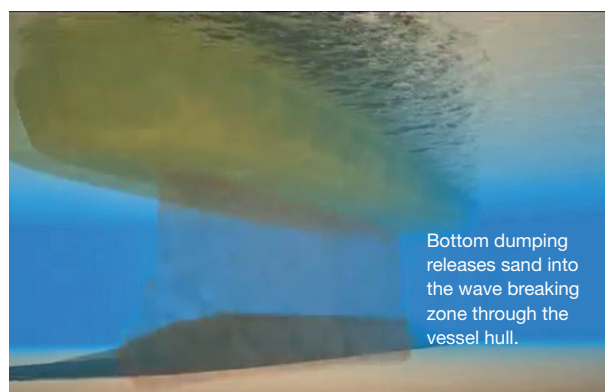
Fact box:

The additional sand will be deposited around the wave breaking zone but not directly on the beach. Over time, the sand will move with the coast's natural process, adding extra sand to protect our beaches from erosion.

This beach nourishment technique has a successful history on our beaches.



Rainbowing projects sand from the bow of the vessel into the wave breaking zone.



Bottom dumping releases sand into the wave breaking zone through the vessel hull.

For more information

P 1300 GOLDCOAST (1300 465 326)
E beachnourishment@goldcoast.qld.gov.au
W cityofgoldcoast.com.au/gcbeachnourishment

CITY OF
GOLDCOAST