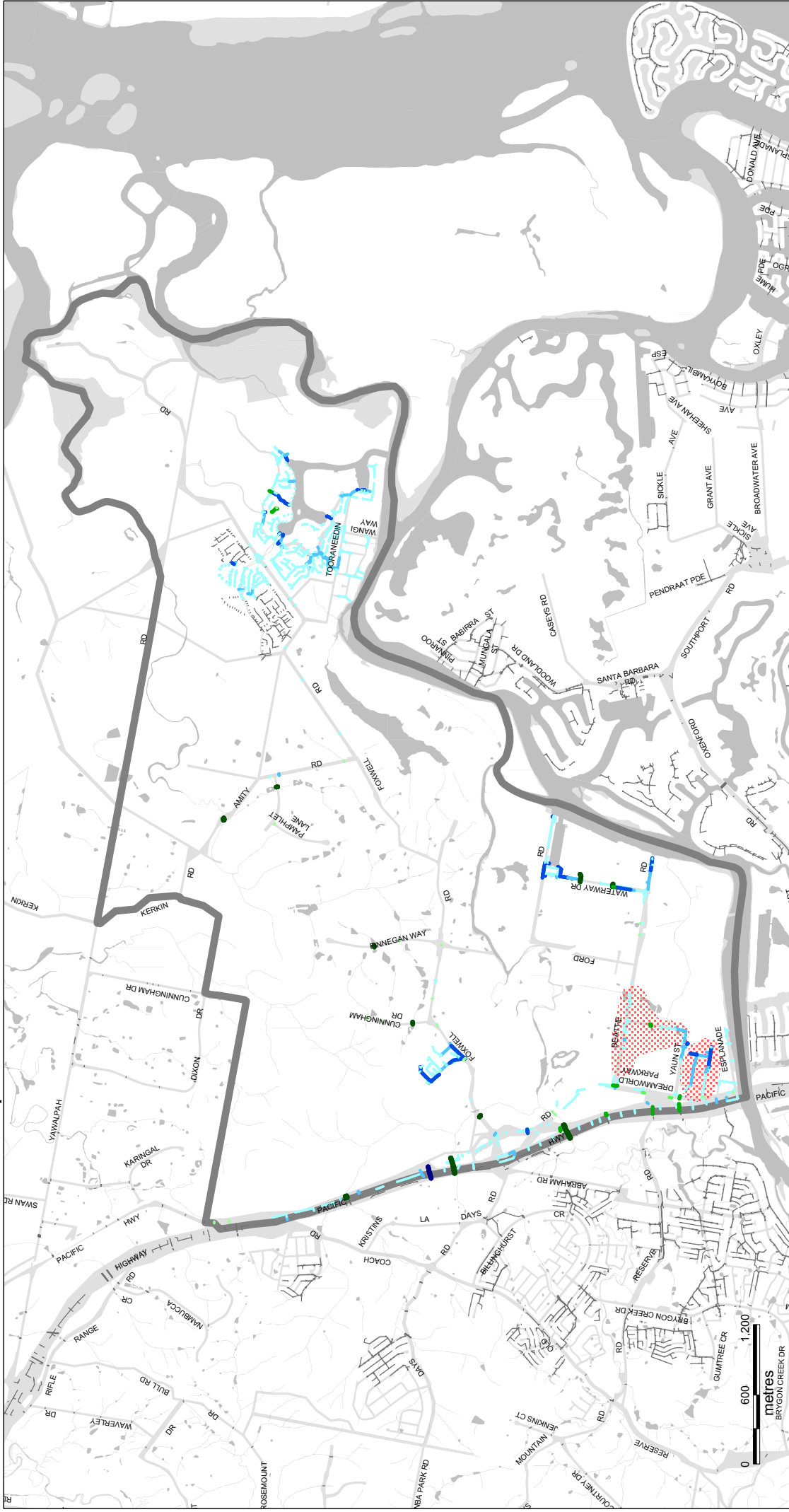


Stormwater Network - Infrastructure Map - IM3-26 Coomera



Legend

Box Culvert Widths	Upgrade Program
2,400 to 3,600	2006 - 2011
1,200 to 2,400	2012 - 2016
900 to 1,200	2017 - 2021
0 to 900	Beyond 2021
Pipe Diameters	
1,500 to 3,500	
900 to 1,500	
600 to 900	
0 to 600	
Stormwater drainage network	Suburb boundary

Based on April 2005 Stormwater Drainage Network data.

- © Gold Coast City Council 2005
Based on Cadastral Data provided with the permission of the Department of Natural Resources and Mines (current as at August 2004).
While every care is taken to ensure the accuracy of this data, the Gold Coast City Council makes no representations or warranties about its accuracy, reliability, completeness or suitability for any particular purpose and disclaims all responsibility and all liability (including, without limitation, liability in negligence) for all expenses, losses, damages (including indirect or consequential damage) and costs which you might incur as a result of the data being inaccurate or incomplete in any way and for any reason.
- © The State of Queensland (Department of Natural Resources and Mines) 2005
While every care is taken to ensure the accuracy of this data, the Department of Natural Resources and Mines makes no representations or warranties about its accuracy, reliability, completeness or suitability for any particular purpose and disclaims all responsibility and all liability (including, without limitation, liability in negligence) for all expenses, losses, damages (including indirect or consequential damage) and costs which you might incur as a result of the data being inaccurate or incomplete in any way and for any reason.

