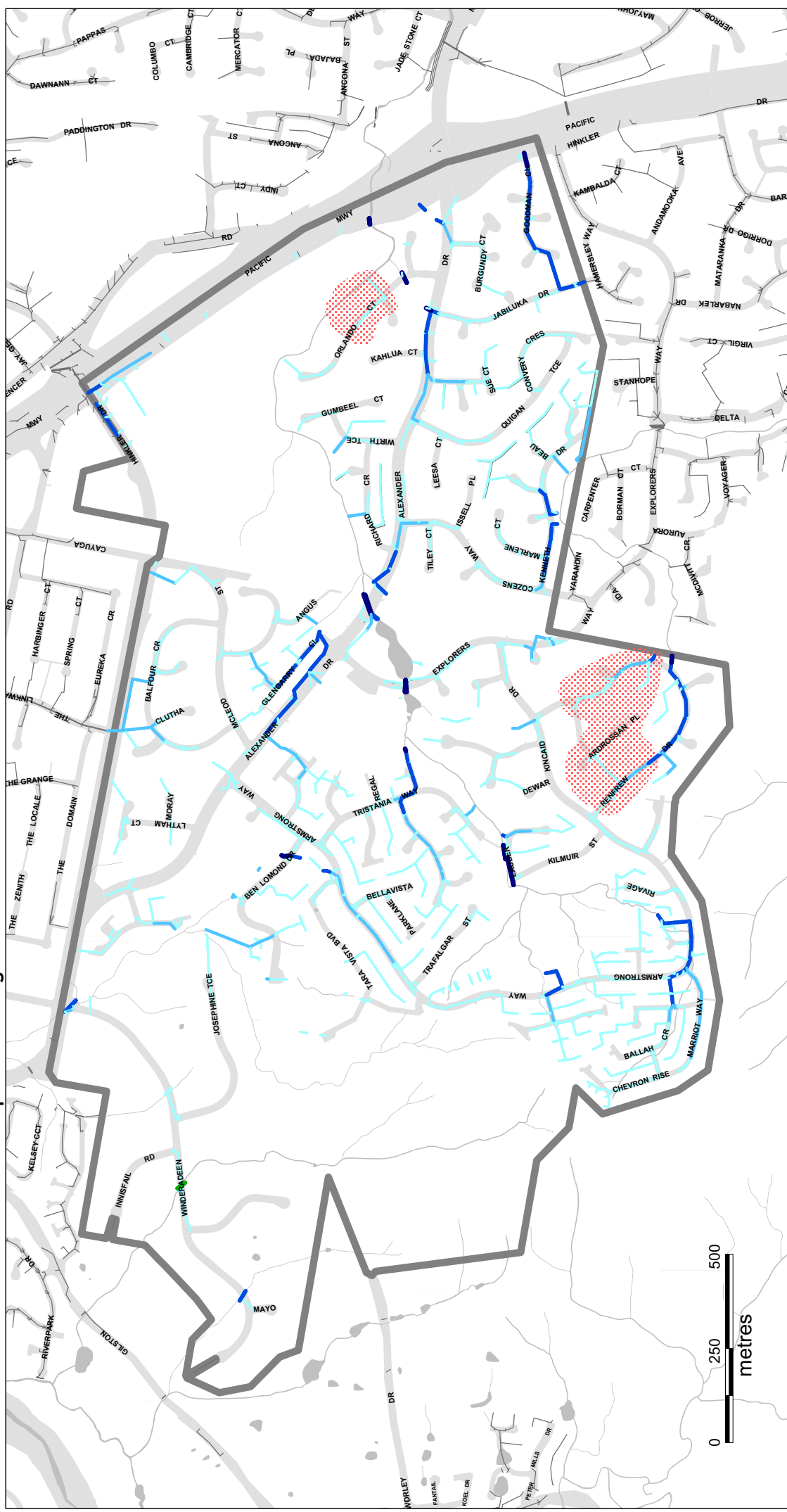


Stormwater Network - Infrastructure Map - IM3-38 Highland Park

Ver 1.1 Jan 2007



Legend

Box Culvert Widths	
2,400 to 3,600	[Green box]
1,200 to 2,400	[Light Green box]
900 to 1,200	[Yellow box]
0 to 900	[Light Yellow box]

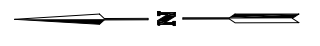
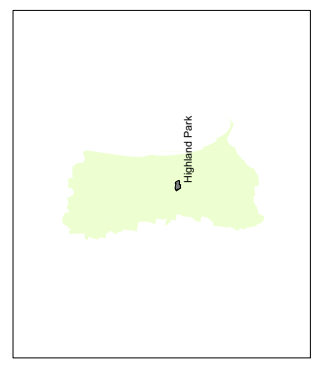
Pipe Diameters	
1,500 to 3,500	[Dark Blue line]
900 to 1,500	[Medium Blue line]
600 to 900	[Light Blue line]
0 to 600	[Cyan line]

Upgrade Program	
2006 - 2011	[Purple dotted pattern]
2012 - 2016	[Red dotted pattern]
2017 - 2021	[Yellow dotted pattern]
Beyond 2021	[White box]

Stormwater drainage network	[Grey line]
Suburb boundary	[Thick grey line]

Based on April 2005 Stormwater Drainage Network data.

- (C) Gold Coast City Council 2005
 Based on Cadastral Data provided with the permission of the Department of Natural Resources and Mines (current as at August 2004).
 While every care is taken to ensure the accuracy of this data, the Gold Coast City Council makes no representations or warranties about its accuracy, reliability, completeness or suitability for any particular purpose and disclaims all responsibility and all liability (including without limitation, liability in negligence) for all expenses, losses, damages (including indirect or consequential damage) and costs which you might incur as a result of the data being inaccurate or incomplete in any way and for any reason.
 (C) The State of Queensland (Department of Natural Resources and Mines) 2005
 While every care is taken to ensure the accuracy of this data, the Department of Natural Resources and Mines makes no representations or warranties about its accuracy, reliability, completeness or suitability for any particular purpose and disclaims all responsibility and all liability (including without limitation, liability in negligence) for all expenses, losses, damages (including indirect or consequential damage) and costs which you might incur as a result of the data being inaccurate or incomplete in any way and for any reason.



November 2005