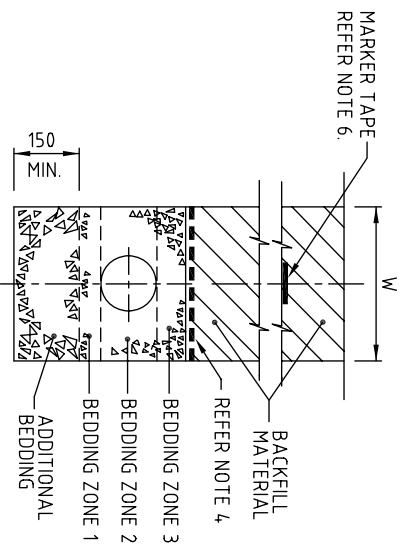
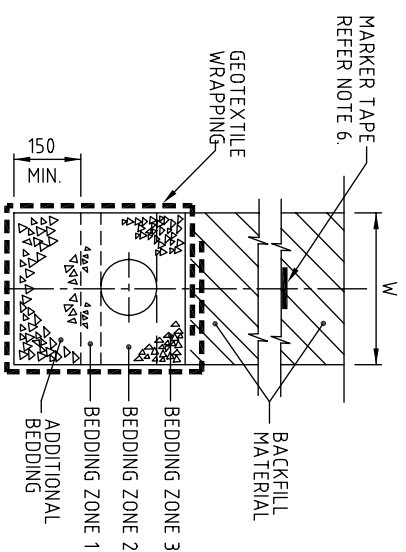


TYPE 1 CONSTRUCTION



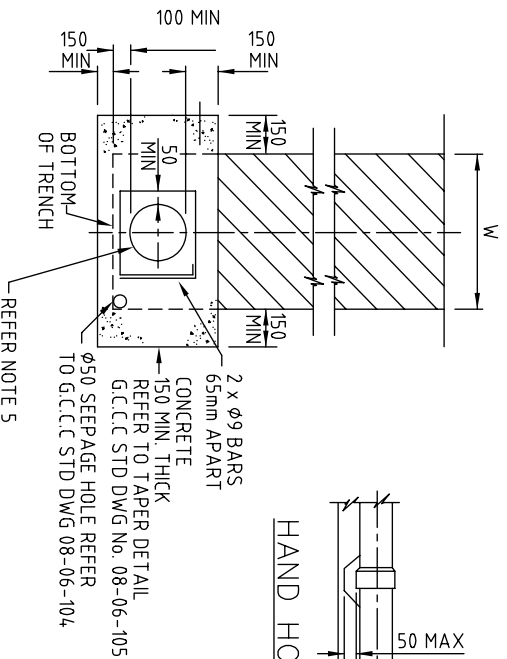
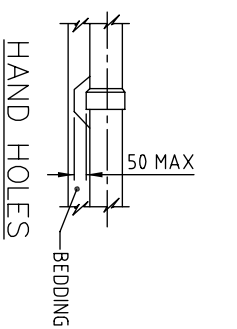
TYPE 2 CONSTRUCTION



TYPE 3 CONSTRUCTION

FOR DETAILS OF BEDDING ZONES 1, 2 AND 3 REFER TO TYPE 1 CONSTRUCTION.

FOR DETAILS OF BEDDING ZONES 1, 2 AND 3 REFER TO TYPE 1 CONSTRUCTION.



CONCRETE BULKHEADS
MAINS AND TAPERS

REFER NOTE 2

NOM DIA	TRENCH WIDTH
d	W
100	450
150	450
225	600
300	750
375	850
450	950
525	1050
600	1150
750	1300
900	1500
> 900-1200	BY DESIGN

NOTES:

- FOR EXCAVATION, BEDDING AND BACKFILL REQUIREMENT'S REFER COUNCIL'S STANDARD SPECIFICATION SS2.
- CONCRETE BULKHEADS SHALL BE LOCATED AT:-
(A) 6m INTERVALS (5.5m DCL) FOR PIPES WITH GRADES BETWEEN 15% AND 29%.
(B) WHERE GRADES EXCEED 29%, THE SPACING IN METRES, SHALL BE CALCULATED BY DIVIDING 100 BY THE GRADE (%).
(C) TAPERS
(D) THE PIPE SHALL BE PROVIDED WITH A 12 THICK COMPRESSIBLE MEMBRANE FOR THE EXTENT OF THE CONCRETE SURROUND.
- CONCRETE IN BULKHEADS IS TO BE GRADE N20.
- WHERE BACKFILL IS CLASSIFIED AS SAND (BY THE SUPERINTENDENT) A GEOTEXTILE BARRIER SHALL BE PROVIDED AT THE INTERFACE OF BEDDING ZONE 3 AND BACKFILL.
- THE PIPE SHALL BE PROVIDED WITH A 12 THICK COMPRESSIBLE MEMBRANE FOR THE EXTENT OF THE CONCRETE SURROUND.
- THE ALIGNMENT OF ALL PIPES SHALL BE MARKED BY A 75mm WIDE TAPE BURIED AT A DEPTH OF 300 MINIMUM. THE TAPE SHALL CONTAIN A CONTINUOUS METAL STRIP AND COLOURED AS APPROPRIATE.
- DIMENSIONS ARE IN MILLIMETRES UNLESS SHOWN OTHERWISE.

THIS DRAWING IS NOT TO BE AMENDED WITHOUT REFERENCE TO STANDARDS COMMITTEE

CONTROLLED DOCUMENT

DO NOT SCALE
TAKE FIGURED DIMENSIONS ONLY

STANDARD DRAWING

MICROFILMED



No.	AMENDMENT	APPROVED	DATE	ISSUED

DRAWN BY	APPROVED	DATE
G.C.W	R. WENT	08/07/08
PASSED		
D. HAYMAN		08/07/08

WATER PRESSURE MAIN
GENERAL TRENCH AND
BEDDING DETAILS

STANDARD DRAWING No.
08-06-101
ISSUE
2008 EDITION

GOLD COAST CITY COUNCIL
PO BOX 5844
GOLD COAST MC 9728

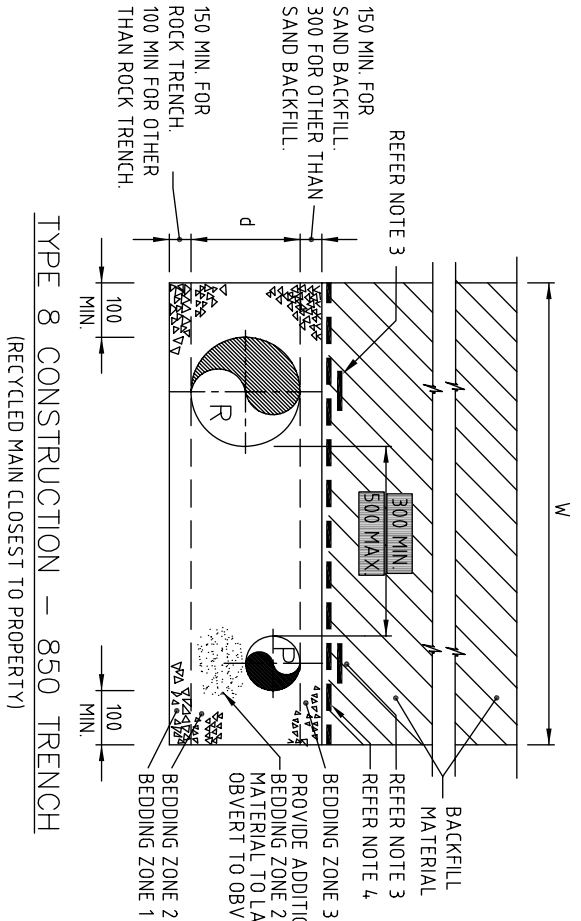
THIS DRAWING IS NOT TO BE AMENDED WITHOUT REFERENCE TO STANDARDS COMMITTEE

CONTROLLED DOCUMENT

DO NOT SCALE TAKE FIGURED DIMENSIONS ONLY	
DRAWN BY G.C.W	08/07/08
PASSED D. HAYMAN	08/07/08
APPROVED R. WENT	08/07/08

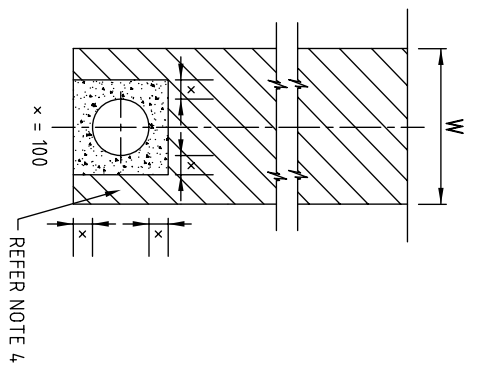
STANDARD DRAWING
**DUAL WATER RETICULATION SYSTEM
 TRENCH & BEDDING DETAILS**

MICROFILMED
 STANDARD DRAWING No.
08-06-103
 ISSUE
2008 EDITION



COMMON TRENCHING			TYPE 8
TRENCH WIDTH W	NOM. DIA		
		POTABLE	RECYCLED
850	63 x 63	A	
	63 x 100	B	
	90 x 100	C	
	100 x 100	D	
	90 x 150	E	
	150 x 100	F	
	150 x 150	G	

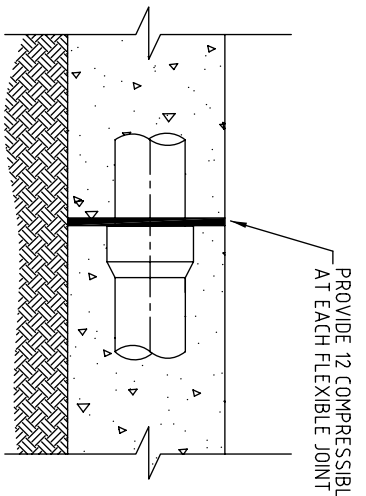
COMMON TRENCHING FOR LARGER MAIN SIZES SHALL BE DETERMINED BY COUNCIL. ADDITIONAL VERGE AND 500 BETWEEN MAINS WIDTH SHALL BE PROVIDED.



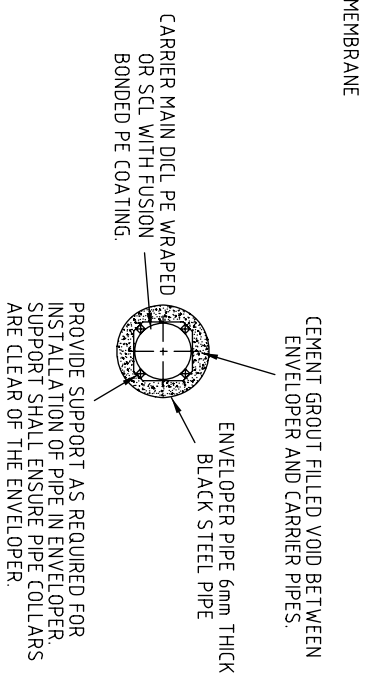
TYPE 7 CONSTRUCTION
 REFER JOINT DETAIL BELOW

NOTES:

1. FOR COMMON TRENCH BEDDING AND BACK FILL REQUIREMENTS REFER COUNCILS STANDARD SPECIFICATION SS2.1 AND SS2.2
2. CONCRETE ENCASUREMENT & BULKHEADS SHALL BE INDEPENDENT FROM ADJOINING MAIN USE 12 COMPRESSIBLE MEMBRANE.
3. PROVIDE APPROPRIATE MARKER TAPE FOR ALL WATER MAINS.
4. FOR GENERAL CONSTRUCTION DETAILS REFER TO GCCC STD DWG No. 08-06-101.
5. PIPE ENVELOPER DETAILS SHALL BE GENERALLY BE IN ACCORDANCE WITH WSAA STD DWG No. WAT - 1214. ANNULUS GROUT 20 PARTS SAND, 2 PARTS LIME AND ONE PART CEMENT PER VOLUME
6. DIMENSIONS ARE IN MILLIMETRES UNLESS SHOWN OTHERWISE.



CONCRETE ENCASUREMENT AT JOINT



THRUST BORED ENVELOPER
 REFER NOTE 5