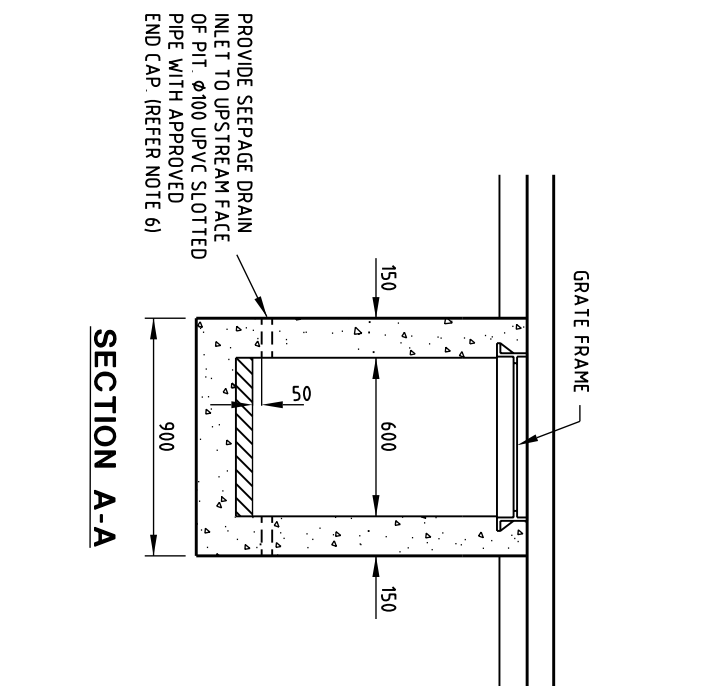
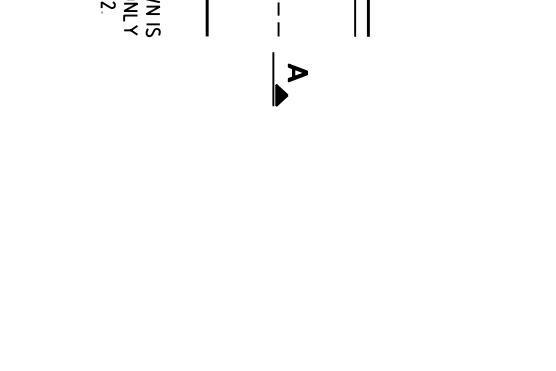
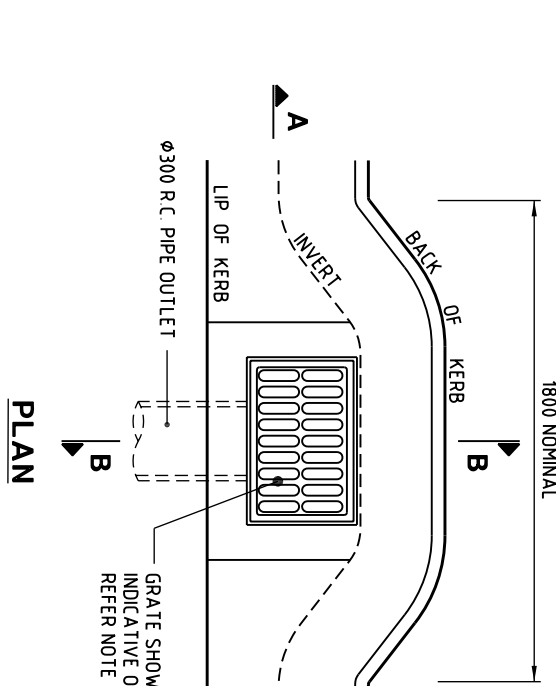


Gold Coast City Council
 GOLD COAST CITY COUNCIL
 GOLD COAST CITY COUNCIL
 GOLD COAST CITY COUNCIL

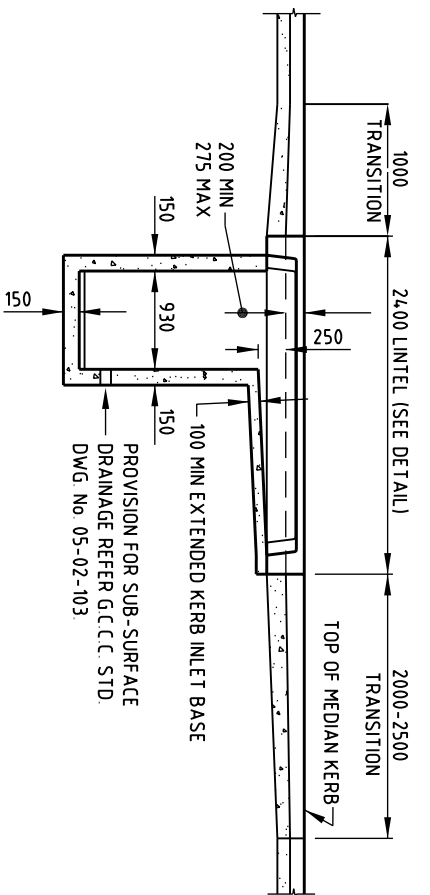
THIS DRAWING IS NOT TO BE AMENDED WITHOUT REFERENCE TO STANDARDS COMMITTEE		CONTROLLED DOCUMENT
No.	AMENDMENT	APPROVED DATE ISSUED

DO NOT SCALE TAKE FIGURED DIMENSIONS ONLY	DRAWN BY TECHNICAL SERVICES BRANCH	18/03/04
PASSED	APPROVED	18/03/04

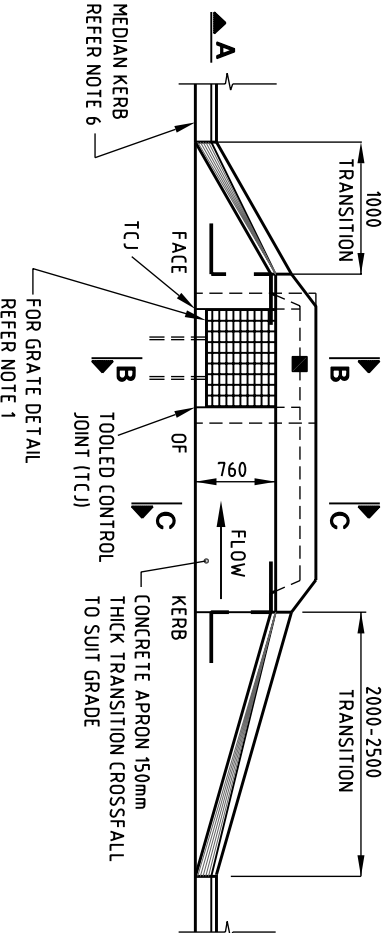
STANDARD DRAWING	MICROFILMED
ANTI-PONDING GULLY ROLL TOP KERB LIP IN LINE	STANDARD DRAWING No. 05-03-005
	ISSUE 2005 EDITION



- NOTES:**
- 1 THE USE OF ANTI-PONDING GULLY PITS SHOULD BE AVOIDED WHEREVER POSSIBLE.
 - 2 THE GULLY GRATE SHOWN IS INDICATIVE ONLY. GRATES SHALL COMPLY WITH COUNCIL'S STANDARD SPECIFICATION SSS.
 - 3 CONCRETE TO BE GRADE NZ5.
 - 4 KERB LEVELS SHALL BE AS PER GRADING ON LONGITUDINAL SECTION OR TURNOUT DETAILS.
 - 5 PIPE INVERT LEVELS AS PER DRAINAGE DETAILS.
 - 6 ADDITIONAL SEEPAGE DRAIN INLETS TO BE PROVIDED IN WATER CHARGED GROUND AS DIRECTED BY THE COUNCIL'S REPRESENTATIVE.
 - 7 DIMENSIONS ARE IN MILLIMETRES UNLESS SHOWN OTHERWISE.

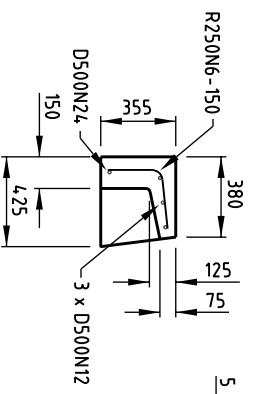


SECTION A-A

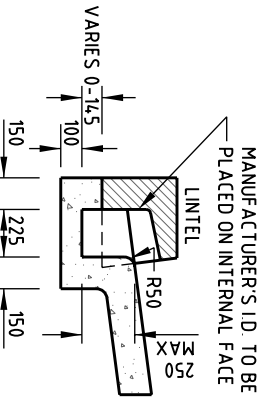


PLAN TYPICAL MEDIAN GULLY (TYPE M)

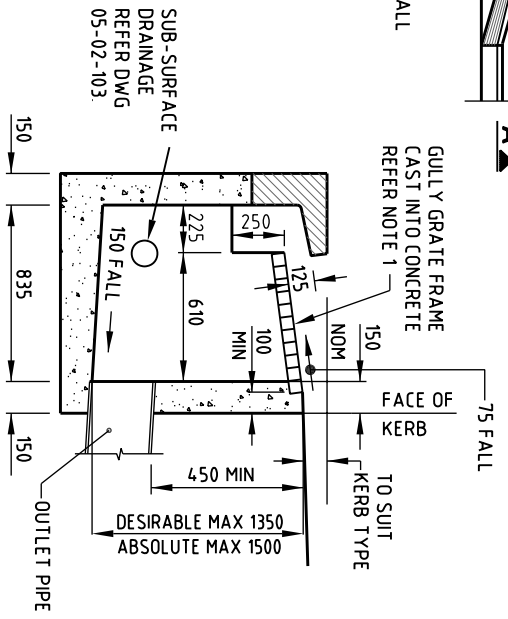
LINTEL NOTE
 PROTECT OUR WATERWAYS - FLOWS TO THE OCEAN
 TEXT 40 HIGH - LETTERS IMPRINTED 5 INTO CONCRETE
 FACING FOOTPATH



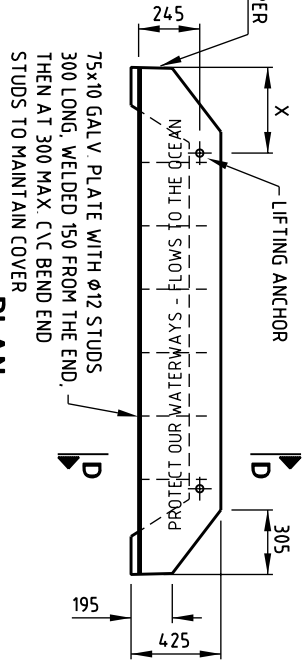
SECTION D-D



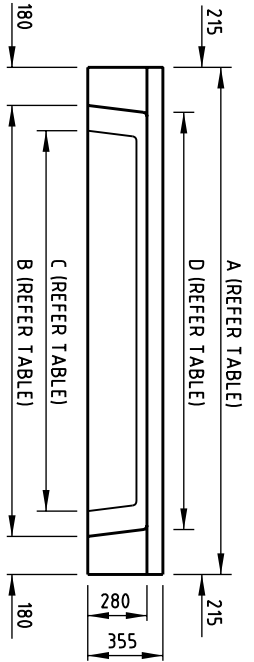
SECTION C-C



SECTION B-B



PLAN



ELEVATION

DIMENSIONS					
TYPE	A	B	C	D	X
SMALL (S)	2400	2040	1800	1970	400

LINTEL TABLE

NOTES

1. THE GULLY GRATE SHOWN IS TYPICAL ONLY. GRATES TO COMPLY WITH COUNCIL'S STANDARD SPECIFICATION SSS.
2. CONCRETE IN PRECAST LINTELS TO BE GRADE N32.
3. CAST IN-SITU CONCRETE TO BE GRADE NZ5.
4. REINFORCING BARS TO AS/NZS 4671:2001 PLACED CENTRALLY, 40 MIN. END COVER.
5. LIFTING ANCHORS TO BE "SWIFTLIFT" OR EQUIVALENT 1.3 TONNE GALVANISED TO AS/NZS 4680 AND FITTED TO MANUFACTURERS SPECIFICATION.
6. MEDIAN KERB PROFILES SHOWN ARE TYPICAL ONLY. ACTUAL PROFILES REFER GCCC STD DWG 05-02-102.
7. FOR DETAILS ON SUB-SURFACE DRAINAGE CONNECTIONS REFER GCCC STD DWG 05-02-103.
8. DIMENSIONS ARE IN MILLIMETRES UNLESS SHOWN OTHERWISE.

STANDARD DRAWING

**MEDIAN GULLY
 CAST IN-SITU DETAILS**



THIS DRAWING IS NOT TO BE AMENDED WITHOUT REFERENCE TO STANDARDS COMMITTEE

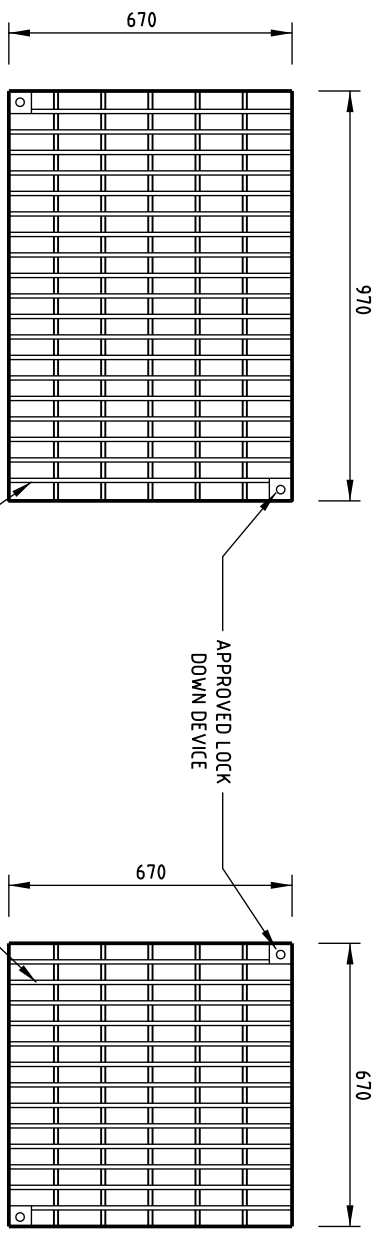
No.	AMENDMENT	APPROVED	DATE	ISSUED

DO NOT SCALE TAKE FIGURED DIMENSIONS ONLY

CONTROLLED DOCUMENT	DRAWN BY	TECHNICAL SERVICES BRANCH	18/03/04

STANDARD DRAWING No. 05-03-007

ISSUE 2005 EDITION

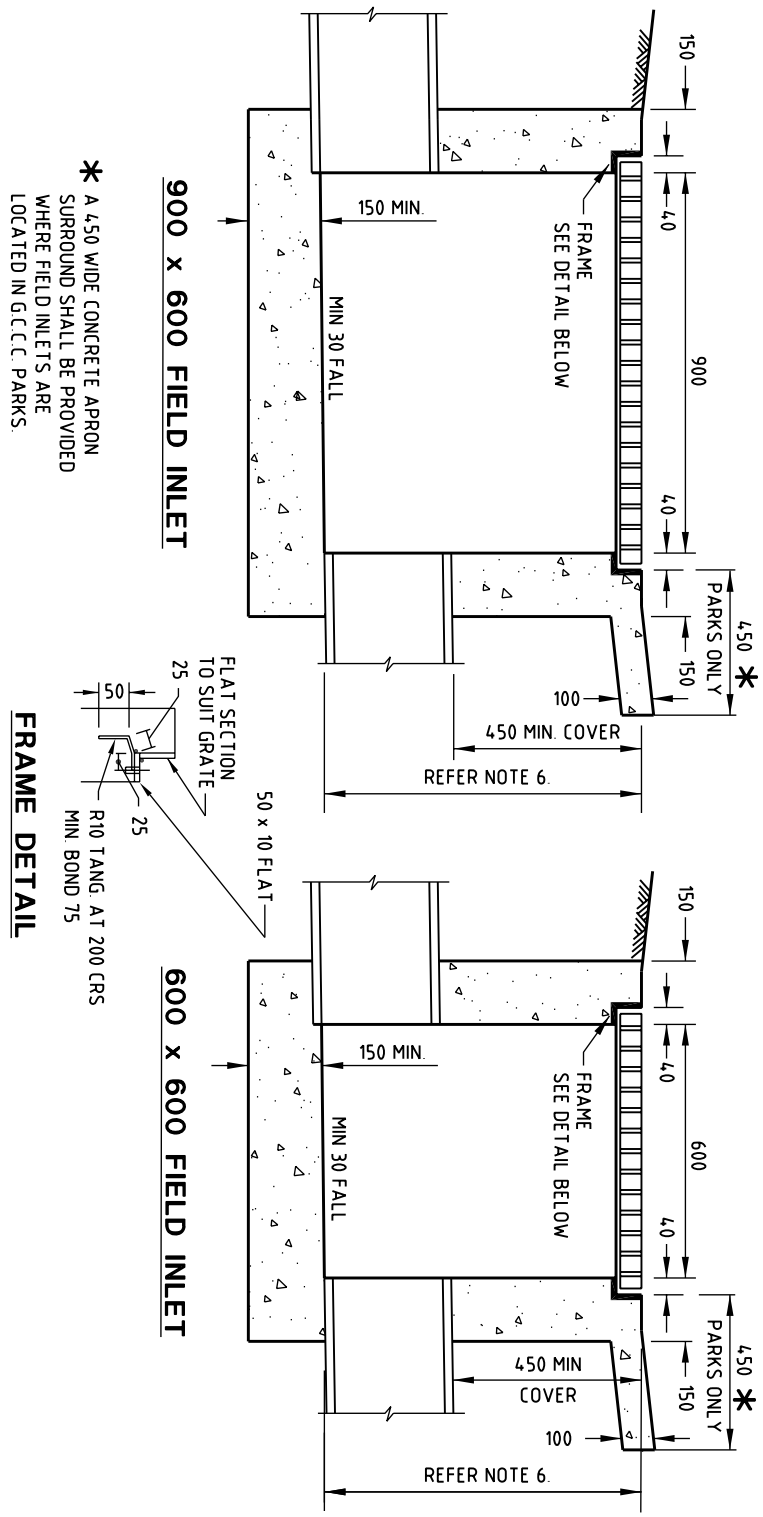


GRATE DETAIL

GRATE DETAIL

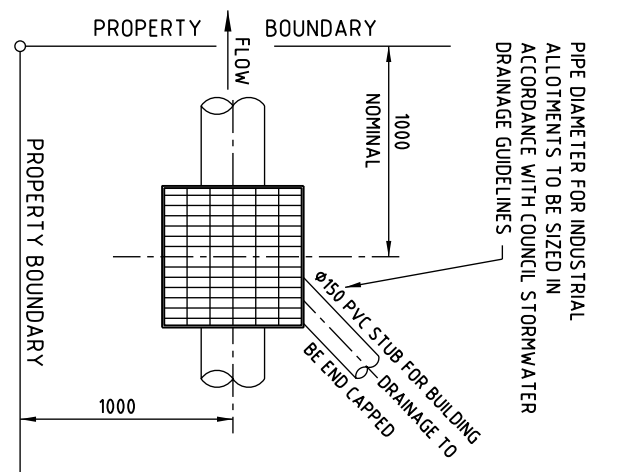
GRATE SHOWN IS INDICATIVE ONLY

APPROVED LOCK DOWN DEVICE



* A 450 WIDE CONCRETE APRON SURROUND SHALL BE PROVIDED WHERE FIELD INLETS ARE LOCATED IN G.C.C.C. PARKS

FRAME DETAIL



GENERAL FIELD INLET PIT LOCATION DETAIL

NOTES:

1. ALL M.S. FRAMES AND SECTIONS TO BE HOT DIPPED GALVANISED TO AS/NZS 4680 AFTER FABRICATION.
2. THE GULLY GRATE AND FRAME SHOWN ARE INDICATIVE ONLY. GRATES AND FRAMES ARE TO COMPLY WITH COUNCIL'S STANDARD SPECIFICATION SSS.
3. BICYCLE SAFE GRATES ARE TO BE PROVIDED IN ALL AREAS SUBJECT TO BICYCLE OR PEDESTRIAN TRAFFIC.
4. CONCRETE TO BE GRADE NZ5.
5. ALL GRATES TO BE BOLTED DOWN.
6. PIT SIZE AND DEPTH REQUIREMENTS ARE:
 • 0-1m DEPTH = 600 x 600 INLET
 • 1-1.5m DEPTH = 900 x 600 INLET
 • 1.5m OR GREATER = STD MANHOLE WITH 600 x 600 NOMINAL GRATE SET INTO AN APPROVED ROOF SLAB.
7. PIPE INVERT LEVELS AS PER DRAINAGE DETAILS
8. DIMENSIONS ARE IN MILLIMETRES UNLESS SHOWN OTHERWISE.

THIS DRAWING IS NOT TO BE AMENDED WITHOUT REFERENCE TO STANDARDS COMMITTEE

CONTROLLED DOCUMENT

DO NOT SCALE TAKE FIGURED DIMENSIONS ONLY

STANDARD DRAWING

MICROFILMED



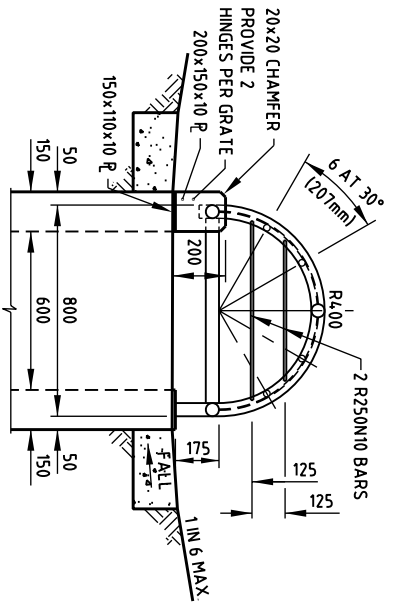
No.	AMENDMENT	APPROVED	DATE	ISSUED

DRAWN BY	TECHNICAL SERVICES BRANCH	18/03/04
PASSED	<i>[Signature]</i>	18/03/04
APPROVED	<i>[Signature]</i>	18/03/04

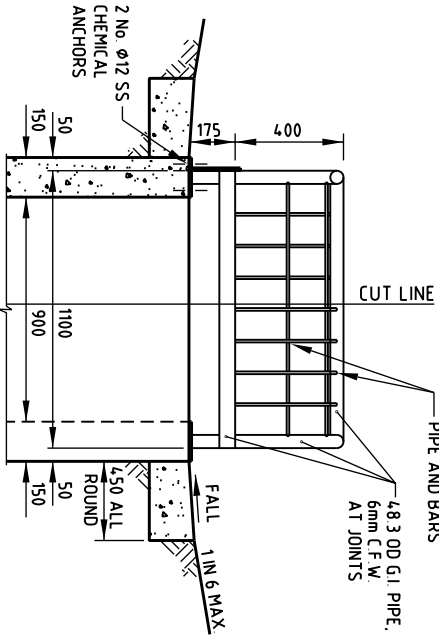
FIELD INLET AND INTER-ALLOTMENT DRAINAGE PIT

STANDARD DRAWING No. **05-03-008**
 ISSUE 2005 EDITION

Gold Coast City Council
 GOLD COAST CITY COUNCIL
 600, Coastway, MC 9729

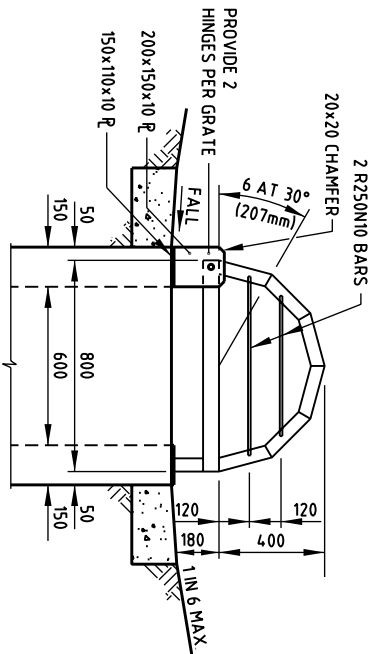


SECTION A-A



SECTION B-B

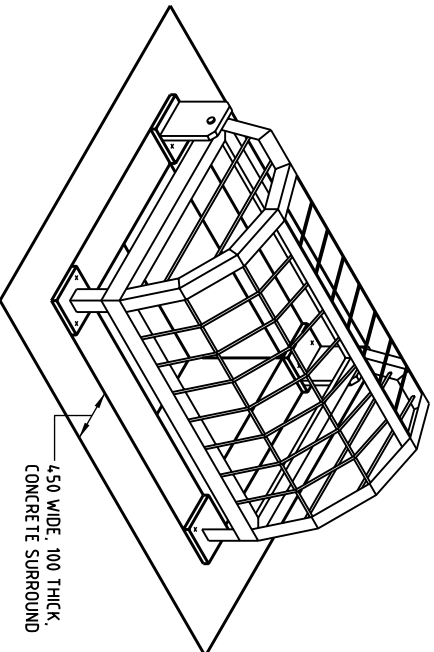
TYPE 1 - PIPE CONSTRUCTION



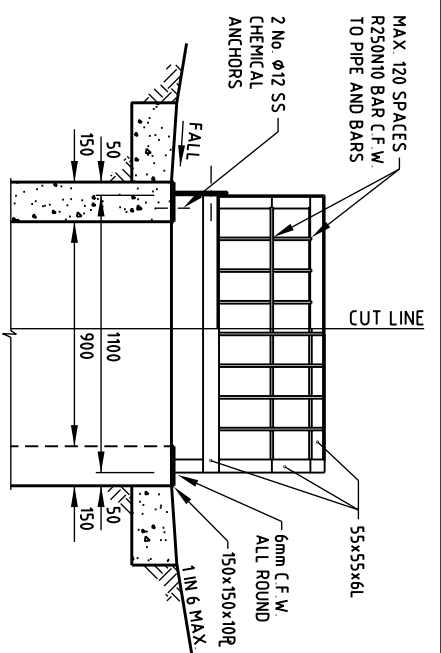
SECTION A-A

NOTES:

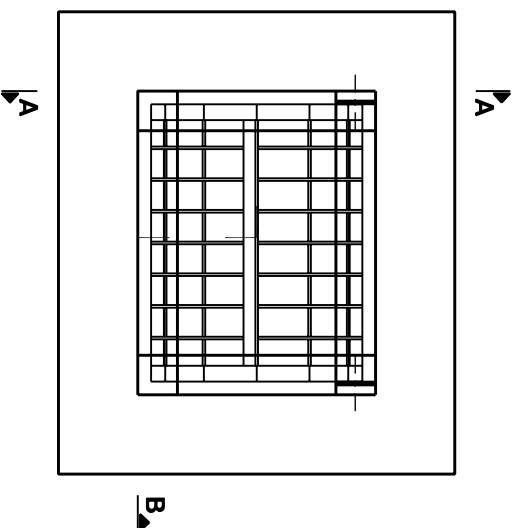
1. CONCRETE TO BE GRADE NZ5.
2. GRATE AND HINGES TO BE HOT DIPPED GALVANISED TO AS/NZS 4680 AFTER FABRICATION.
3. THE ISOMETRIC VIEW IS SIMILAR IN TYPE 1 AND TYPE 2.
4. PIPE INVERT LEVELS AS PER DRAINAGE DETAILS.
5. DIMENSIONS ARE IN MILLIMETRES UNLESS SHOWN OTHERWISE.



ISOMETRIC VIEW



SECTION B-B



PLAN

TYPE 2 - ANGLE CONSTRUCTION

THIS DRAWING IS NOT TO BE AMENDED WITHOUT REFERENCE TO STANDARDS COMMITTEE

CONTROLLED DOCUMENT

DO NOT SCALE TAKE FIGURED DIMENSIONS ONLY

STANDARD DRAWING

MICROFILMED



Gold Coast City Council
GOLD COAST CITY COUNCIL
PO BOX 5012
GOLD COAST MC 9729

No.	AMENDMENT	APPROVED	DATE	ISSUED

DRAWN BY	TECHNICAL SERVICES BRANCH
PASSED	18/03/04
APPROVED	18/03/04

STANDARD DRAWING No.	05-03-009
ISSUE	2005 EDITION

FIELD INLET PIT DOME TOP COVER