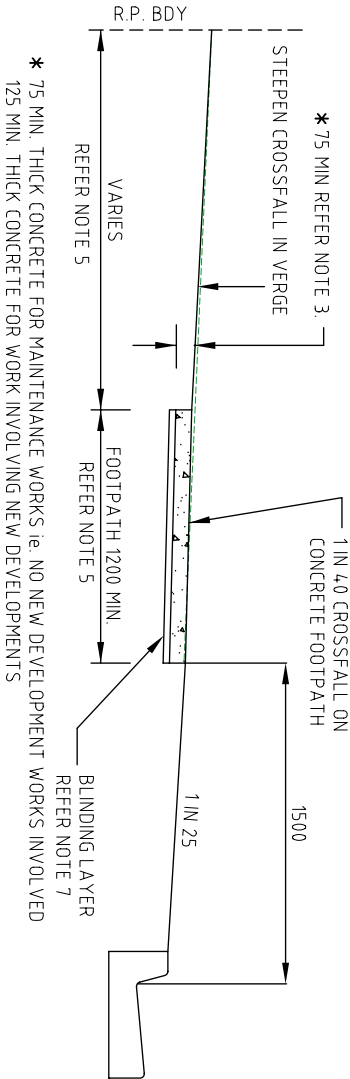


**FOOTPATH JOINT PLAN**



**NOTE - PEDESTRIAN SURFACES.**

ALL SURFACES SUBJECT TO PEDESTRIAN TRAFFIC SHALL MEET THE MINIMUM PENDULUM OR RAMP RECOMMENDATIONS CONTAINED IN TABLE 3 OF AUSTRALIAN STANDARD HANDBOOK HB 197:1999 - AN INTRODUCTORY GUIDE TO THE SLIP RESISTANCE OF PEDESTRIAN SURFACE MATERIALS. COMPLIANCE WITH THE RECOMMENDATIONS SHALL BE VERIFIED BY TESTING TO EITHER:- AS/NZS 4586:1999 - SLIP RESISTANCE CLASSIFICATION OF NEW PEDESTRIAN SURFACE MATERIALS OR AS/NZS 4663:2002 - SLIP RESISTANCE MEASUREMENT OF EXISTING PEDESTRIAN SURFACES AS APPROPRIATE. IN BOTH INSTANCES COMPLIANCE SHALL BE DEMONSTRATED BY APPLYING CLAUSE 5.3 - MEANS OF DEMONSTRATING COMPLIANCE OF AS/NZS 4586:1999 - SLIP RESISTANCE CLASSIFICATION OF NEW PEDESTRIAN SURFACE MATERIALS.

IN GENERAL, THE CLASSIFICATION OF A SURFACING MATERIAL OR FINISH SHALL BE MADE ON A WORST CASE BASIS AS DETERMINED BY PENDULUM TESTING USING BOTH THE FOURS AND TRL RUBBER SLIDER. WHERE ADDITIONAL TEST RESULTS ARE AVAILABLE (OIL - WET RAMP, WET/BAREFOOT RAMP) THESE MAY BE TAKEN INTO CONSIDERATION.

**NOTES:**

1. CONCRETE TO BE MINIMUM GRADE N20.
2. ALL CONCRETE TO BE TRANSVERSE HEAVY BROOM FINISHED. USE A STANDARD EDGING TOOL TO PENCIL ROUND THE EDGE INCLUDING CONTROL & EXPANSION JOINTS WITH SMOOTH BORDER APPROXIMATELY 50mm WIDE.
3. FOR CONCRETE FOOTPATHS WHERE VEHICULAR TRAFFIC IS LIKELY TO CROSS THE PATH, THE FOOTPATH IS TO BE DESIGNED AS A VEHICULAR CROSSING - REFER G.C.C.C. STD. DWG. No's. 05-02-301 TO 05-02-303.
4. CONTROL JOINTS TO BE SQUARE TO SIDES.
5. FOR DETAILS OF VERGE CONCRETE PATH AND ALLOCATION OF PUBLIC UTILITIES REFER G.C.C.C. STD. DWG. No. 05-02-005.
6. PROOF ROLL SUBGRADE TO 200 BEYOND CONCRETE EDGE. 3 PASSES WITH A CC10 ROLLER (OR EQUIVALENT). NO DEFLECTION ON LAST PASS.
7. 30 BLINDING LAYER OF SAND.
8. THE FINISHED SURFACE OF FOOTPATHS TO COMPLY WITH THE REQUIREMENTS OF AS/NZS 4586:1999 'SLIP RESISTANCE CLASSIFICATION OF NEW PEDESTRIAN SURFACE MATERIALS'.
9. PROVIDE TACTILE MARKERS IN ACCORDANCE WITH A.S. 1428.4:2002
10. DOWELLED EXPANSION JOINTS (DEJ) AND CONTROL JOINTS (CJ) ARE TO BE PROVIDED AS SHOWN ON G.C.C.C. STD. DWG. No. 05-02-205.
11. FOR DETAILS OF FOOTPATH KERB RAMPS REFER G.C.C.C. STD. DWG. No's 05-02-202 & 05-02-203.
12. SURFACE FINISHES OTHER THAN PLAIN CONCRETE ARE SUBJECT TO COUNCIL APPROVAL.
13. ALL CONSTRUCTION TO COMPLY WITH THE REQUIREMENTS OF AS 3600. CONCRETE CODE.
14. DIMENSIONS ARE IN MILLIMETRES UNLESS SHOWN OTHERWISE.

**DESIRABLE FINISHES**

1. PLAIN CONCRETE - HEAVY BROOM FINISH
2. EXPOSED AGGREGATE SURFACE, PROVIDED THAT ANGULAR (CRUSHED) AGGREGATES ARE USED (FULLY ROUNDED AGGREGATES UNACCEPTABLE)
3. STENCILLED CONCRETE WITH NON-SLIP PEDESTRIAN SURFACE (E.G. BROOMED OR STIPPLED) - UNSEALED)
4. COLOURED CONCRETE WITH PREVIOUSLY MENTIONED FINISHES
5. PAVERS - SUBJECT TO COUNCIL ASSESSMENT & APPROVAL (E.G. PLACED ON A 100 mm CONCRETE SLAB)

**UNDESIRABLE FINISHES**

1. STAMPED CONCRETE
2. SEALED CONCRETE
3. EXPOSED AGGREGATE SURFACE USING ROUNDED AGGREGATES
4. POLISHED OR HIGH GLOSS FINISHES

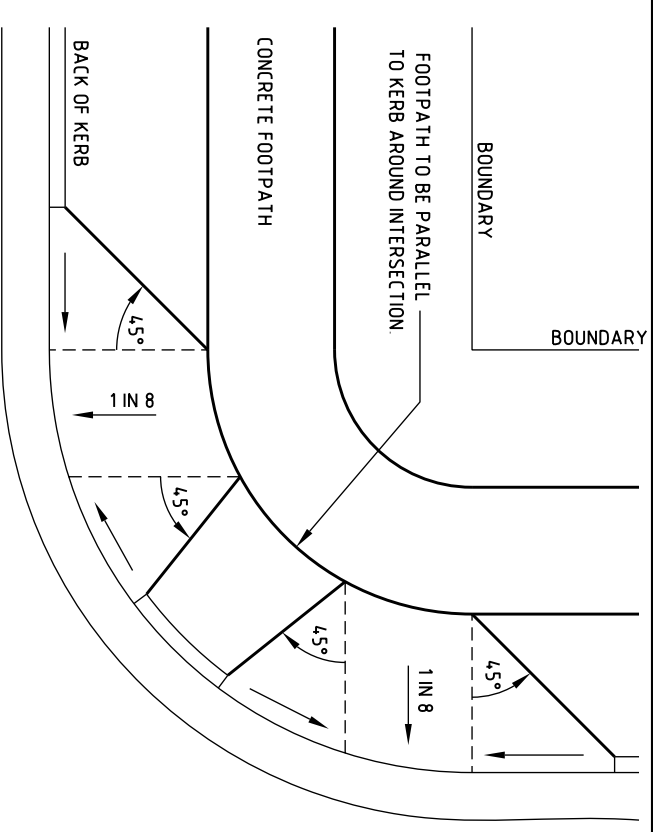
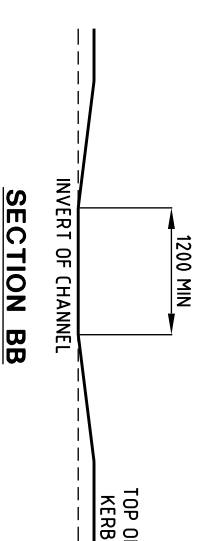
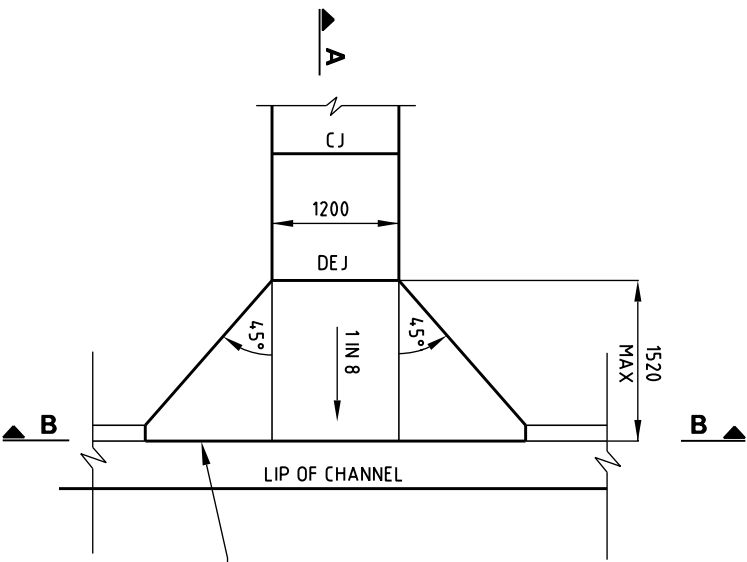
**FOOTPATH REINSTATEMENT**

WHEN A CONCRETE FOOTPATH IS TO BE AFFECTED WHEREBY PARTIAL REMOVAL IS PROPOSED (eg UNDERGROUND UTILITY INSTALLATION) THE ENTIRE CONCRETE FOOTPATH IS TO BE REMOVED AND REPLACED UPON INSTALLATION OF THE UTILITY.



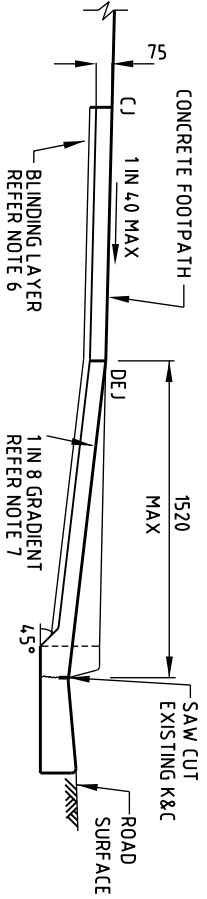
THIS DRAWING IS NOT TO BE AMENDED WITHOUT REFERENCE TO STANDARDS COMMITTEE		CONTROLLED DOCUMENT	DO NOT SCALE TAKE FIGURED DIMENSIONS ONLY	STANDARD DRAWING	
DRAWN BY TECHNICAL SERVICES BRANCH			18/03/04	CONCRETE FOOTPATHS	
PASSED			19/03/04	1200mm WIDE	
APPROVED				MICROFILMED	
AMENDMENT		APPROVED		STANDARD No. 05-02-201	
No.	APPROVED	DATE	ISSUED	2005 EDITION	

Gold Coast City Council  
 GOLD COAST CITY COUNCIL  
 P.O. BOX 3544  
 GOLD COAST MC 9728



**FOOTPATH KERB RAMP PLAN**

**BARRIER OR LAYBACK KERB AND CHANNEL**



**NOTES:**

1. CONCRETE TO BE MINIMUM GRADE N20
2. ALL CONCRETE TO BE TRANSVERSE HEAVY BROOM FINISHED. USE A STANDARD EDGING TOOL TO PENCIL ROUND THE EDGE INCLUDING CONTROL & EXPANSION JOINTS WITH SMOOTH BORDER APPROXIMATELY 50mm WIDE
3. CONTROL JOINTS TO BE SQUARE TO SIDES.
4. FOR DETAILS OF VERGE CONCRETE PATH AND ALLOCATION OF PUBLIC UTILITIES REFER G.C.C.C STD DWG No. 05-02-005
5. PROOF ROLL SUBGRADE TO 200 BEYOND CONCRETE EDGE. 3 PASSES WITH A CCI0 ROLLER (OR EQUIVALENT). NO DEFLECTION ON LAST PASS.
6. MAXIMUM 30 BLINDING LAYER OF SAND.
7. THE RAMP GRADIENT IS TO BE NOT STEEPER THAN 1 IN 8 AND NOT FLATTER THAN 1 IN 8.5.
8. THE FINISHED SURFACE OF FOOTPATHS TO COMPLY WITH THE REQUIREMENTS OF AS/NZS 4586:1999 'SLIP RESISTANCE CLASSIFICATION OF NEW PEDESTRIAN SURFACE MATERIALS'.
9. PROVIDE TACTILE MARKERS WHERE SPECIFIED IN ACCORDANCE WITH AS/NZS 1428.4:2002.
10. DOWELLED EXPANSION JOINTS (DEJ) AND CONTROL JOINTS (CJ) ARE TO BE PROVIDED AS SHOWN ON G.C.C.C. STD DWG No. 05-02-205.
11. KERB RAMPS ARE TO BE LOCATED SO THAT THE PATH OF TRAVEL IS PERPENDICULAR TO THE STREET BEING CROSSED.
12. ALL CONSTRUCTION TO COMPLY WITH THE REQUIREMENTS OF AS 3600: CONCRETE CODE.
13. DIMENSIONS ARE IN MILLIMETRES UNLESS SHOWN OTHERWISE.

**TYPICAL FOOTPATH DETAIL AT INTERSECTIONS**

THIS DRAWING IS NOT TO BE AMENDED WITHOUT REFERENCE TO STANDARDS COMMITTEE

CONTROLLED DOCUMENT

DO NOT SCALE TAKE FIGURED DIMENSIONS ONLY

STANDARD DRAWING

MICROFILMED



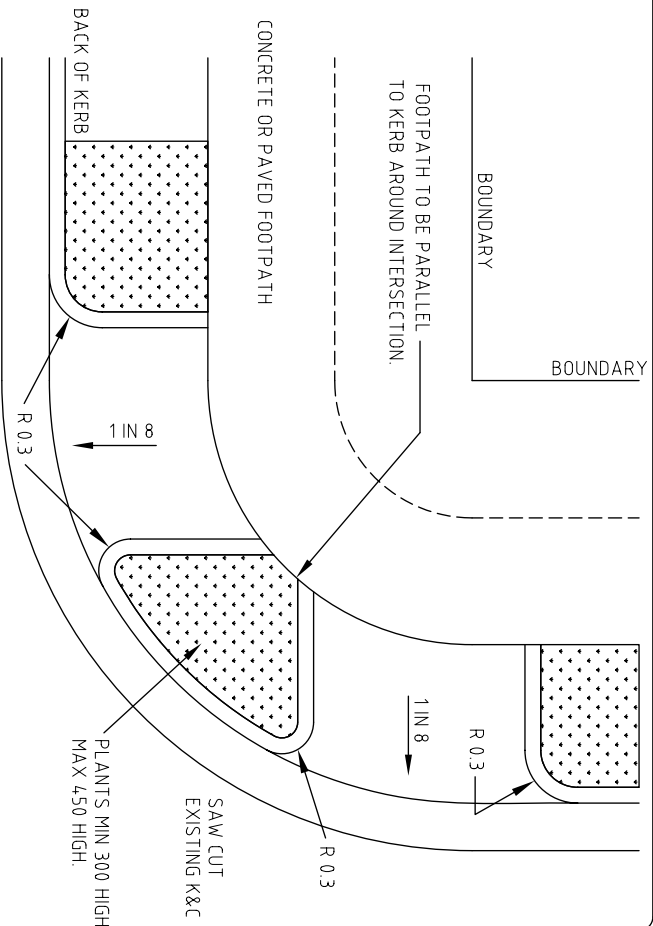
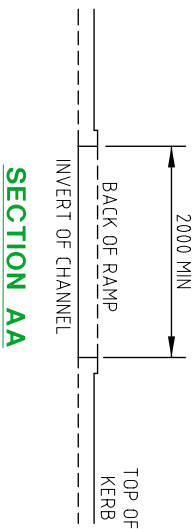
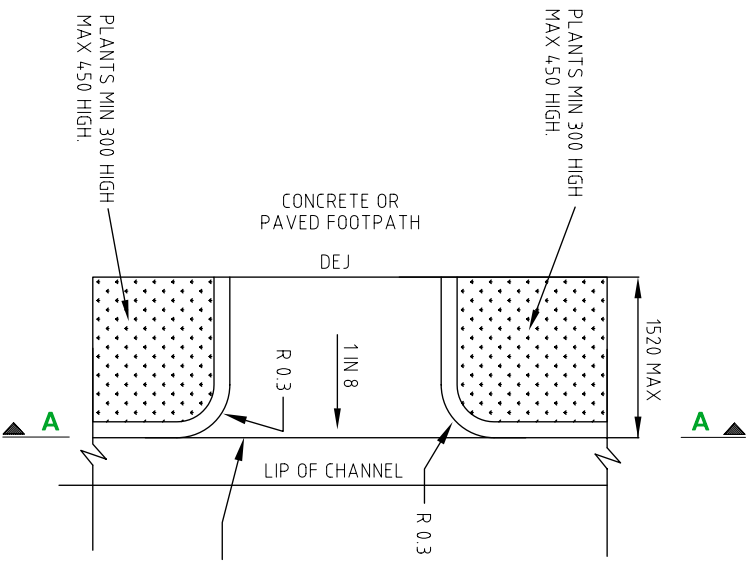
No.	AMENDMENT	APPROVED	DATE	ISSUED

DRAWN BY	TECHNICAL SERVICES BRANCH	APPROVED	19/03/04

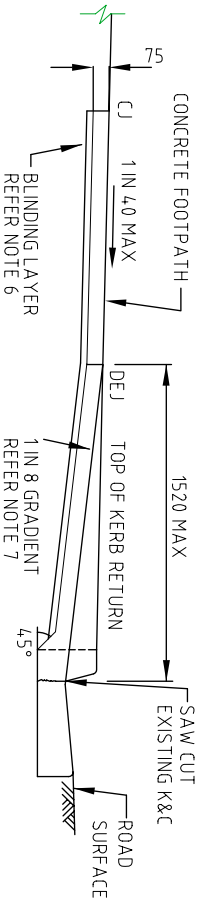
**KERB RAMP**

STANDARD DRAWING No. **05-02-202**  
ISSUE **2005 EDITION**

Gold Coast City Council  
PO BOX 55124 MC 9729



**FOOTPATH KERB RAMP PLAN**



**BARRIER OR LAYBACK KERB AND CHANNEL**

**NOTES:**

1. CONCRETE TO BE MINIMUM GRADE N20.
2. ALL CONCRETE TO BE TRANSVERSE HEAVY BROOM FINISHED. USE A STANDARD EDGING TOOL TO PENCIL ROUND THE EDGE INCLUDING CONTROL & EXPANSION JOINTS WITH SMOOTH BORDER APPROXIMATELY 50mm WIDE.
3. CONTROL JOINTS TO BE SQUARE TO SIDES.
4. FOR DETAILS OF VERGE CONCRETE PATH AND ALLOCATION OF PUBLIC UTILITIES REFER G.C.C.C STD. DWG. No. 05-02-005.
5. PROOF ROLL SUBGRADE TO 200 BEYOND CONCRETE EDGE. 3 PASSES WITH A CC10 ROLLER (OR EQUIVALENT). NO DEFLECTION ON LAST PASS.
6. MAXIMUM 30 BLINDING LAYER OF SAND.
7. THE RAMP GRADIENT IS TO BE NOT STEEPER THAN 1 IN 8 AND NOT FLATTER THAN 1 IN 8.5.
8. THE FINISHED SURFACE OF FOOTPATHS TO COMPLY WITH THE REQUIREMENTS OF AS/NZS 4586:1999 'SLIP RESISTANCE CLASSIFICATION OF NEW PEDESTRIAN SURFACE MATERIALS'.
9. PROVIDE TACTILE MARKERS WHERE SPECIFIED IN ACCORDANCE WITH AS. 1428.4:2002.
10. DOWELLED EXPANSION JOINTS (DEJ) AND CONTROL JOINTS (CJ) ARE TO BE PROVIDED AS SHOWN ON G.C.C.C. STD DWG No. 05-02-205.
11. KERB RAMPS ARE TO BE LOCATED SO THAT THE PATH OF TRAVEL IS PERPENDICULAR TO THE STREET BEING CROSSED.
12. ALL CONSTRUCTION TO COMPLY WITH THE REQUIREMENTS OF AS 3600, CONCRETE CODE.
13. DIMENSIONS ARE IN MILLIMETRES UNLESS SHOWN OTHERWISE.

**TYPICAL FOOTPATH DETAIL AT INTERSECTIONS**

THIS DRAWING IS NOT TO BE AMENDED WITHOUT REFERENCE TO STANDARDS COMMITTEE

CONTROLLED DOCUMENT

DO NOT SCALE TAKE FIGURED DIMENSIONS ONLY

**STANDARD DRAWING**

MICROFILMED

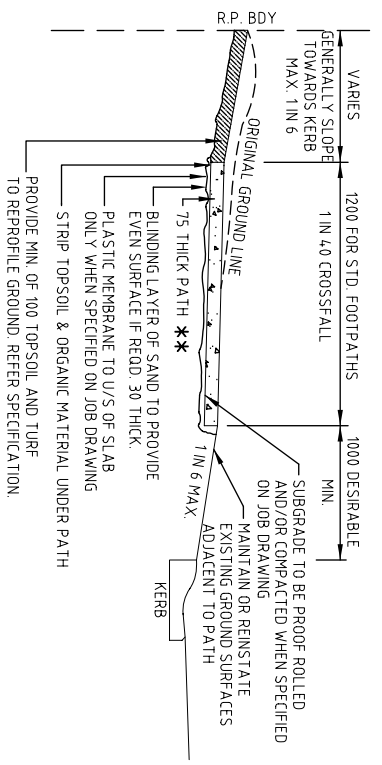


No.	AMENDMENT	APPROVED	DATE	ISSUED

DRAWN BY	TECHNICAL SERVICES BRANCH
APPROVED	19/03/04

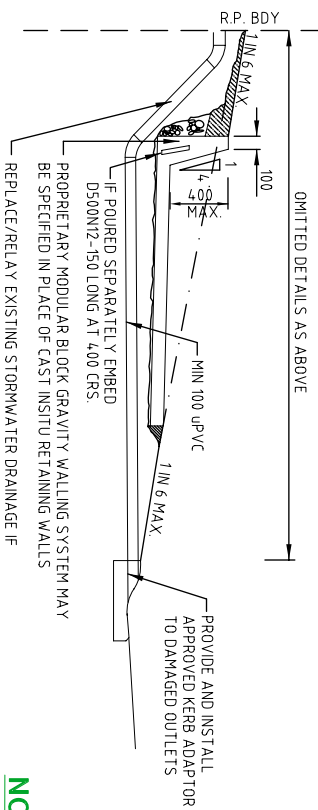
**KERB RAMP ADJACENT TO GARDENS**

STANDARD DRAWING No. **05-02-203**  
ISSUE 2005 EDITION

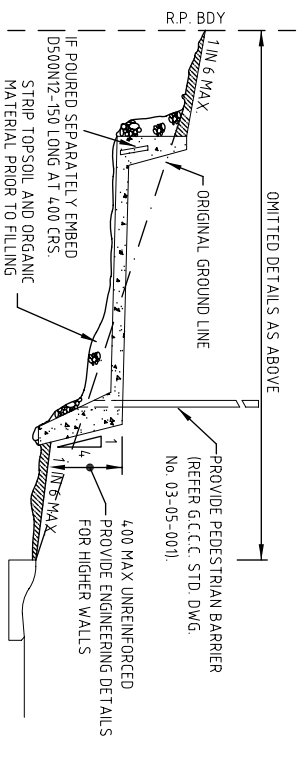


**\*\* 75 MIN. THICK CONCRETE FOR MAINTENANCE WORKS i.e. NO NEW DEVELOPMENT WORKS INVOLVED**  
**125 MIN. THICK CONCRETE FOR WORK INVOLVING NEW DEVELOPMENTS**

**MODERATE CROSSFALL**

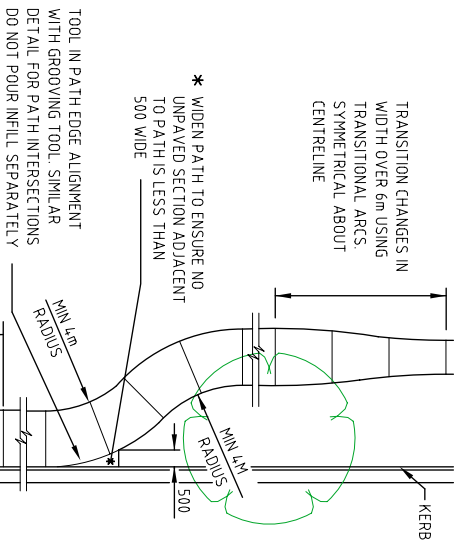


**STEEP CROSSFALL**



**VERY STEEP CROSSFALL**

**PATHWAY CROSS SECTIONS**



**TYPICAL ALIGNMENT ARRANGEMENTS**

**NOTES:**

- THIS DRAWING IS ONLY TO BE USED IN EXISTING BUILT UP AREAS WHERE THE DETAILS SHOWN ON GCCC STD. DWG. NO. 05-02-201 CANNOT BE ACHIEVED. HOWEVER IT IS TO BE READ IN CONJUNCTION WITH GCCC STANDARD DWG NO. 05-02-201.
- REFER TO JOB DWG FOR ACTUAL ALIGNMENT, WIDTH, THICKNESS & OTHER DETAILS
- REFER GCCC STD. DWG. NO. 05-02-005 FOR STANDARD LOCATION OF CONCRETE FOOTPATHS IN VERGES.
- REFER GCCC STD. DWG. NO. 05-02-301 TO 05-02-303 FOR DETAILS OF DRIVEWAYS.
- CONCRETE STRENGTH TO BE MINIMUM GRADE N20.
- PATH SURFACE TO BE FLUSH WITH ADJACENT GROUND LEVELS.
- REINSTATE ADJACENT GROUND SURFACES TO CONDITION AT COMMENCEMENT OF WORK.
- PATHS MEETING DRIVEWAYS/PATHS AT STEEPER THAN PERMISSIBLE CROSSFALL MAY REQUIRE SPECIAL CONSTRUCTION SUBJECT TO COUNCIL APPROVAL.
- CONSTRUCT DRIVEWAY INFILLS BETWEEN KERBLINE AND CONCRETE FOOTPATH AT INVERT CROSSINGS WITH NO EXISTING DRIVEWAY.
- GENERALLY REMAIN OUTSIDE TREE DRIP LINE OR 3m FROM TRUNK EDGE.
- THE FINISHED SURFACE OF FOOTPATHS IS TO COMPLY WITH THE REQUIREMENTS OF AS/NZS 4586:1999 'SLIP RESISTANCE CLASSIFICATION OF NEW PEDESTRIAN SURFACE MATERIALS'.
- PROVIDE TACTILE MARKERS WHERE SPECIFIED IN ACCORDANCE WITH A.S. 1428.4:2002.
- FOOTPATHS TO BE LOCATED CLEAR OF WATER AND SEWER MAIN FITTINGS AND MANHOLES. WHERE A FOOTPATH INCREASES OR DECREASES THE COVER OVER A MAIN THEN THE STANDARD COVER WILL BE REINSTATED. REFER LAND DEVELOPMENT GUIDELINES 4.2.10(B), 5.2.8(D), OR 5.2.12(C)(iii). MINIMUM COVER TO OTHER SERVICES IS TO BE IN ACCORDANCE WITH THE SERVICE AUTHORITIES' REQUIREMENTS.
- DOWELLED EXPANSION JOINTS (DEJ) AND CONTROL JOINTS (CJ) ARE TO BE PROVIDED AS SHOWN ON GCCC STD. DWG. NO. 05-02-205.
- ALL CONSTRUCTION TO COMPLY WITH THE REQUIREMENTS OF AS 3600, CONCRETE CODE.
- DIMENSIONS ARE IN MILLIMETRES UNLESS SHOWN OTHERWISE.

**LEGEND**

- MAX NOT STEEPER THAN
- MIN NOT LESS THAN

THIS DRAWING IS NOT TO BE AMENDED WITHOUT REFERENCE TO STANDARDS COMMITTEE

CONTROLLED DOCUMENT

DO NOT SCALE TAKE FIGURED DIMENSIONS ONLY

STANDARD DRAWING

MICROFILMED



Gold Coast City Council  
 P.O. Box 3542  
 Gold Coast, Q.C. 9728

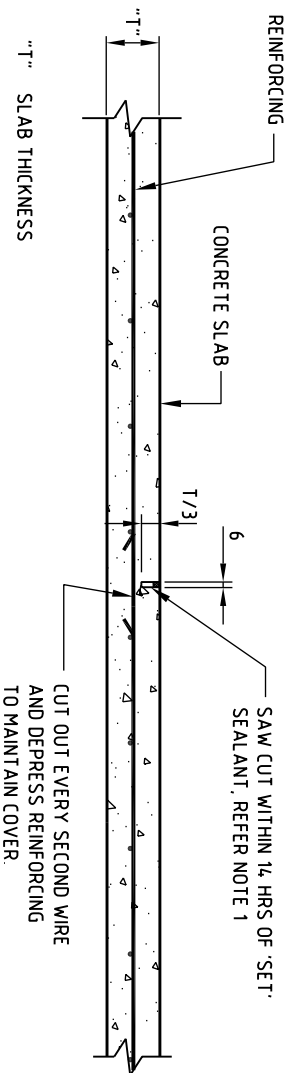
No.	AMENDMENT	APPROVED	DATE	ISSUED

DRAWN BY	TECHNICAL SERVICES BRANCH	18/03/04
PASSED		
APPROVED		19/03/04

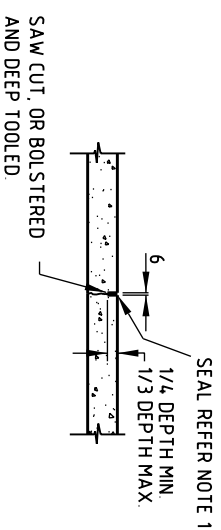
CONCRETE FOOTPATHS EXISTING BUILT-UP AREAS

STANDARD DRAWING No. 05-02-204

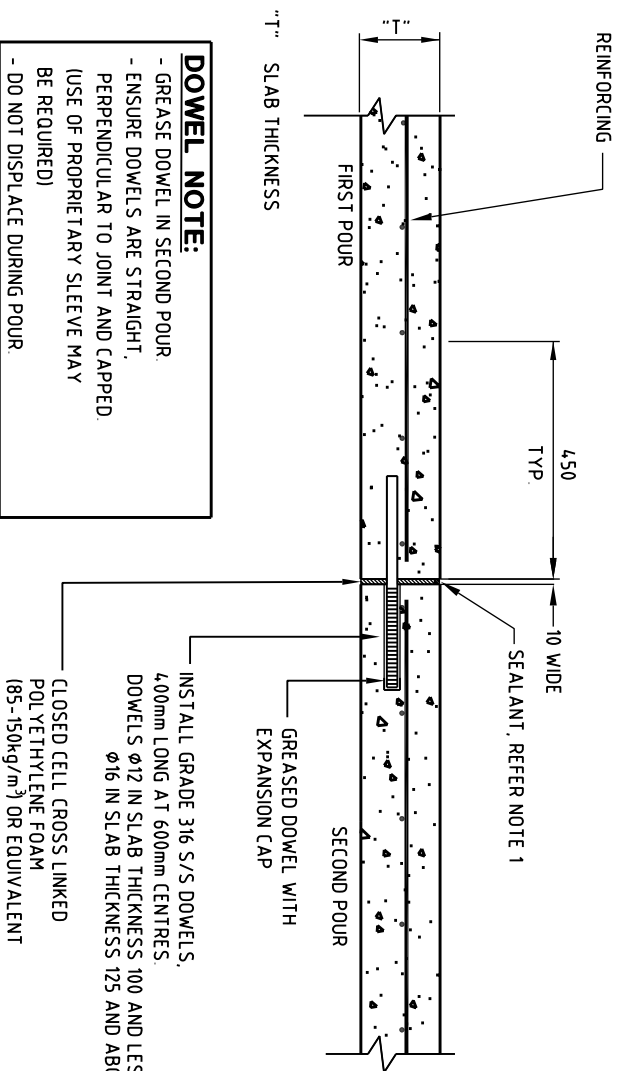
ISSUE 2005 EDITION



**CONTROL JOINT DETAIL (CJ)**  
(3m MAX. SPACING)



**CONTROL JOINT UNREINFORCED CONCRETE (CJU)**  
(FOR 1200 WIDE FOOTPATHS)

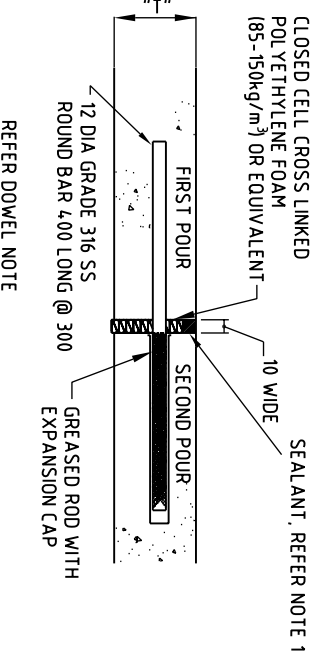


**DOWEL NOTE:**

- GREASE DOWEL IN SECOND POUR
- ENSURE DOWELS ARE STRAIGHT, PERPENDICULAR TO JOINT AND CAPPED (USE OF PROPRIETARY SLEEVE MAY BE REQUIRED)
- DO NOT DISPLACE DURING POUR.

INSTALL GRADE 316 S/S DOWELS, 400mm LONG AT 600mm CENTRES. DOWELS  $\phi 12$  IN SLAB THICKNESS 100 AND LESS.  $\phi 16$  IN SLAB THICKNESS 125 AND ABOVE.

CLOSED CELL CROSS LINKED POLYETHYLENE FOAM (85-150kg/m<sup>3</sup>) OR EQUIVALENT



**DOWELLED EXPANSION JOINT UNREINFORCED CONCRETE (DEJU)**  
(FOR 1200 WIDE FOOTPATHS)

- NOTES**
1. EXPANSION JOINTS AND CONTROL JOINTS ARE TO BE SEALED WITH A LOW MODULUS SELF PRIMING SEALANT TO THE MANUFACTURERS SPECIFICATION. THE COLOUR OF THE SEALANT IS TO MATCH THE ADJOINING SURFACE FINISH.
  2. JOINT SPACING FOR 1200 WIDE FOOTPATHS ARE TO BE PROVIDED AS SHOWN ON GCCC STD DWG 05-02-201.
  3. ALL CONSTRUCTION TO COMPLY WITH THE REQUIREMENTS OF AS 3600, CONCRETE CODE.
  4. DIMENSIONS ARE IN MILLIMETRES UNLESS SHOWN OTHERWISE.

**DOWELLED EXPANSION JOINT DETAIL (DEJ)**  
(12m MAX. SPACING)

THIS DRAWING IS NOT TO BE AMENDED WITHOUT REFERENCE TO STANDARDS COMMITTEE

CONTROLLED DOCUMENT

DO NOT SCALE TAKE FIGURED DIMENSIONS ONLY



No.	AMENDMENT	APPROVED	DATE	ISSUED

DRAWN BY	TECHNICAL SERVICES BRANCH	APPROVED	DATE

**STANDARD DRAWING**

**CONCRETE JOINTS**

MICROFILMED

STANDARD DRAWING No. **05-02-205**

ISSUE **2005 EDITION**

GOLD COAST CITY COUNCIL  
PO BOX 3824  
GOLD COAST, NC 9729