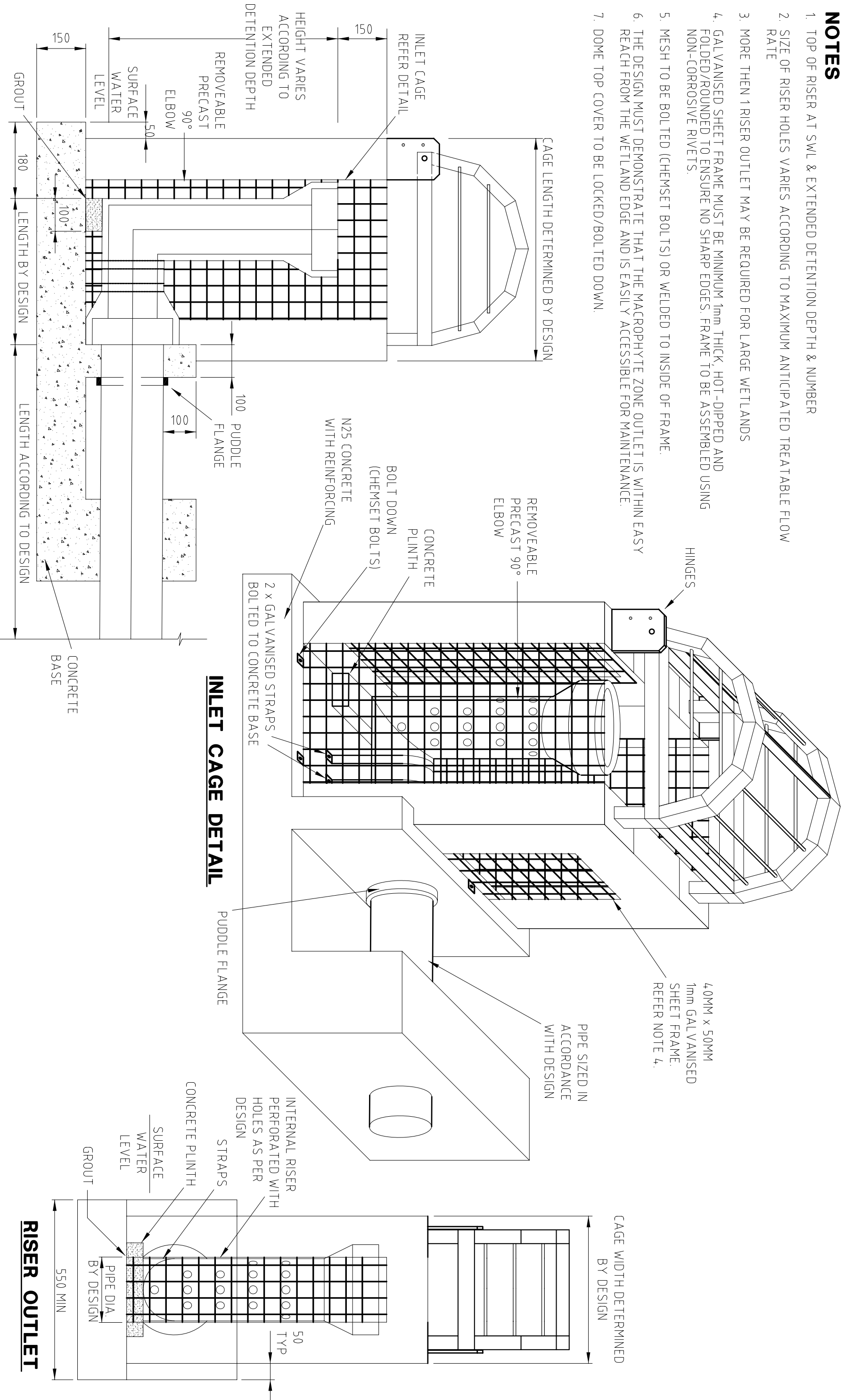


NOTES

1. TOP OF RISER AT SWL & EXTENDED DETENTION DEPTH & NUMBER
2. SIZE OF RISER HOLES VARIES ACCORDING TO MAXIMUM ANTICIPATED TREATABLE FLOW RATE
3. MORE THEN 1 RISER OUTLET MAY BE REQUIRED FOR LARGE WETLANDS
4. GALVANISED SHEET FRAME MUST BE MINIMUM 1mm THICK, HOT-DIPPED AND FOLDED/ROUNDED TO ENSURE NO SHARP EDGES. FRAME TO BE ASSEMBLED USING NON-CORROSIVE RIVETS.
5. MESH TO BE BOLTED (CHEMSET BOLTS) OR WELDED TO INSIDE OF FRAME.
6. THE DESIGN MUST DEMONSTRATE THAT THE MACROPHYTE ZONE OUTLET IS WITHIN EASY REACH FROM THE WETLAND EDGE AND IS EASILY ACCESSIBLE FOR MAINTENANCE.
7. DOME TOP COVER TO BE LOCKED/BOLTED DOWN.



Exhibition Draft of Land Development Guidelines March 2007

RISER OUTLET PIPE - TYPICAL SECTION

INLET CAGE DETAIL

RISER OUTLET

THIS DRAWING IS NOT TO BE AMENDED WITHOUT REFERENCE TO STANDARDS COMMITTEE

CONTROLLED DOCUMENT

DO NOT SCALE TAKE FIGURED DIMENSIONS ONLY

STANDARD DRAWING

MICROFILMED

Gold Coast City Council

GOLD COAST CITY COUNCIL
PO BOX 5042
GOLD COAST MC 9729



No.

AMENDMENT

APPROVED

DATE

ISSUED

APPROVED

DRAWN BY
TECHNICAL SERVICES BRANCH

PASSED

APPROVED

WETLAND RISER OUTLET STRUCTURE

ISSUE 2005 EDITION

STANDARD DRAWING No. **05-02-611**