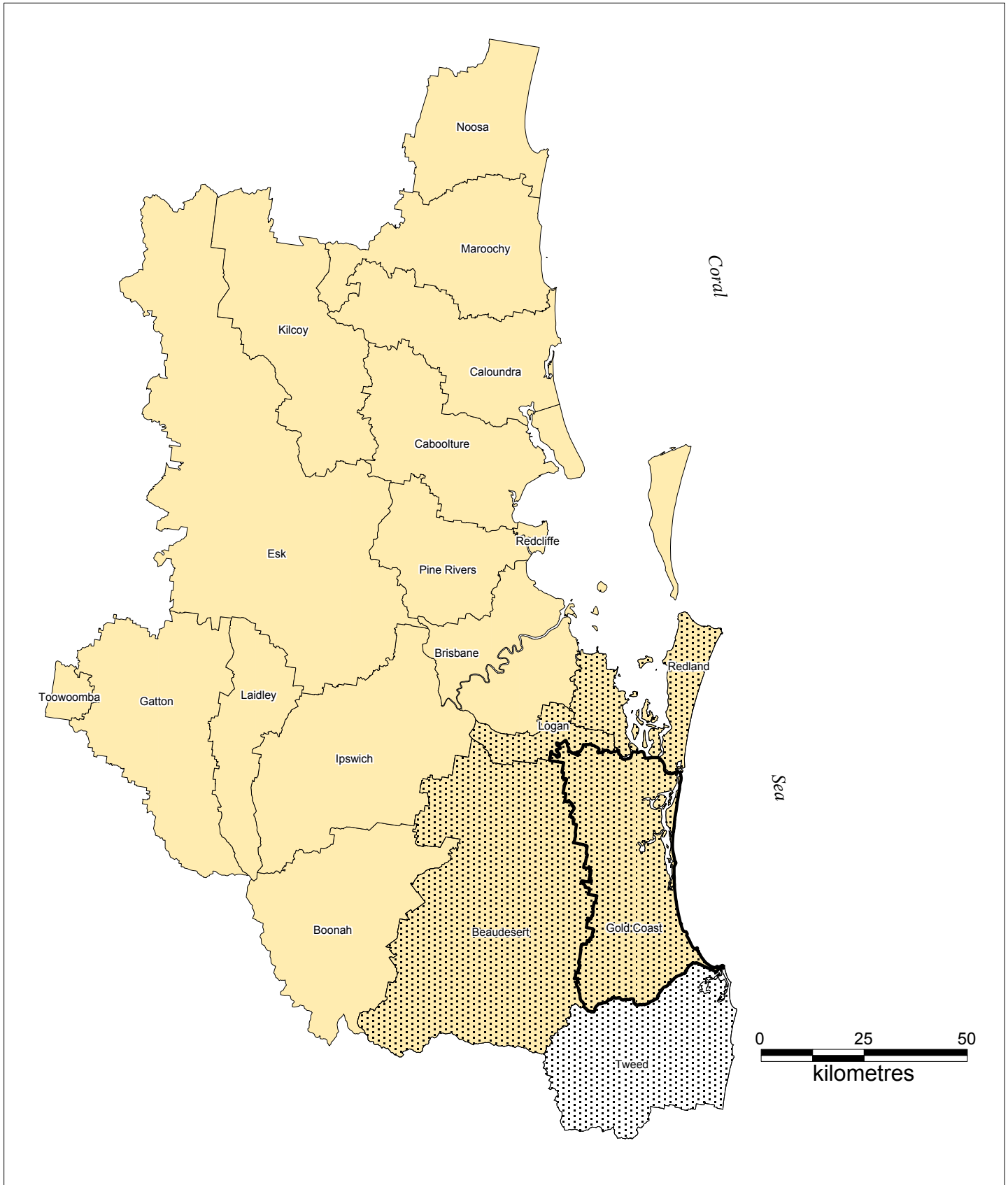


CONTEXT MAP CM-2 SEQROC Region (Ver. 1.0)




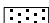

Gold Coast City Council



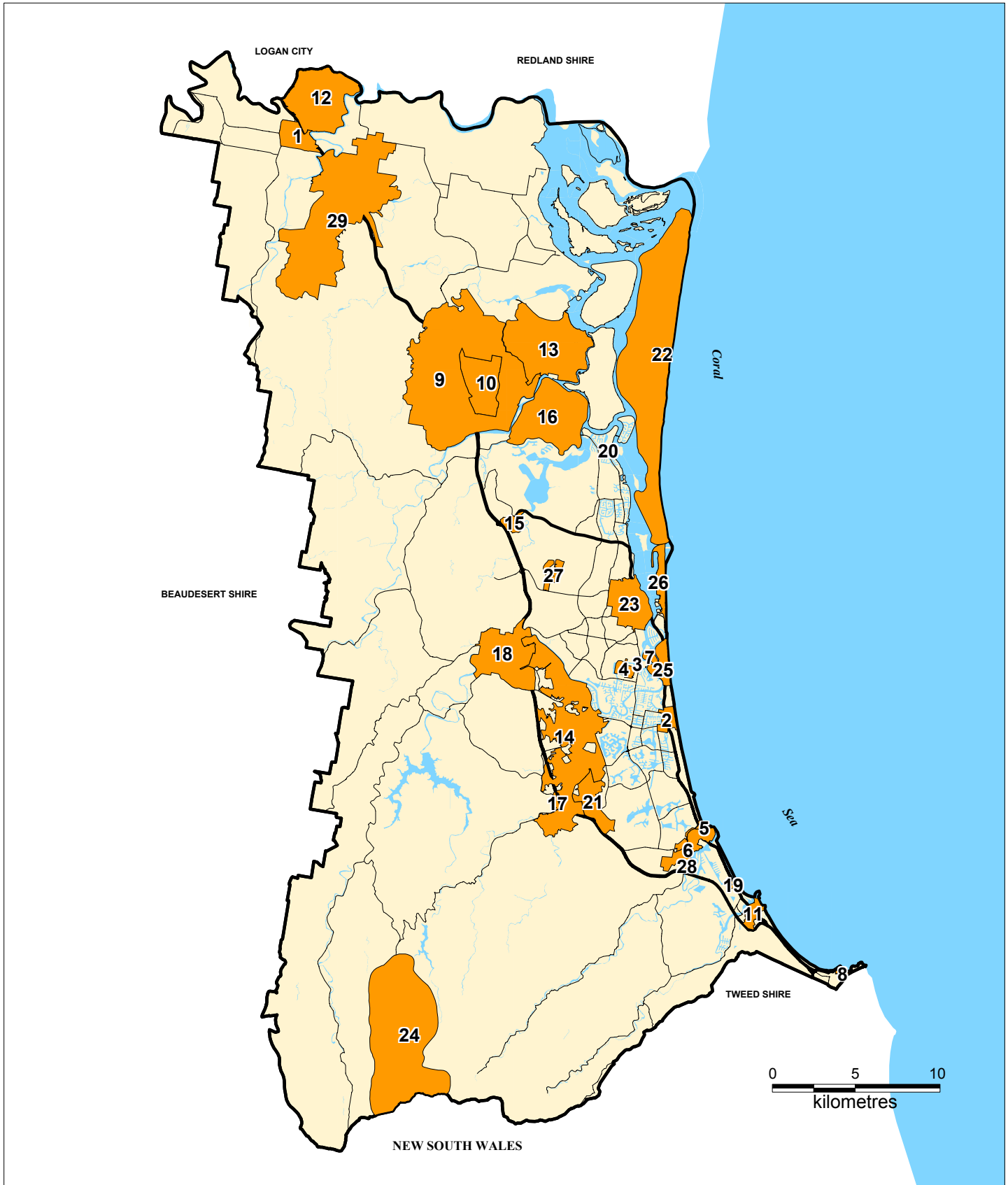
- © Gold Coast City Council 2003.
Based on Cadastral Data provided with the permission of the Department of Natural Resources and Mines (current as at February 2003). While every care is taken to ensure the accuracy of this data, the Gold Coast City Council makes no representations or warranties about its accuracy, reliability, completeness or suitability for any particular purpose and disclaims all responsibility and all liability (including without limitation, liability in negligence) for all expenses, losses, damages (including indirect or consequential damage) and costs which you might incur as a result of the data being inaccurate or incomplete in any way and for any reason.
- © The State of Queensland (Department of Natural Resources and Mines) 2003.
While every care is taken to ensure the accuracy of this data, the Department of Natural Resources and Mines makes no representations or warranties about its accuracy, reliability, completeness or suitability for any particular purpose and disclaims all responsibility and all liability (including without limitation, liability in negligence) for all expenses, losses, damages (including indirect or consequential damage) and costs which you might incur as a result of the data being inaccurate or incomplete in any way and for any reason.



Legend

	SOUTH EAST QUEENSLAND REGIONAL ORGANISATION OF COUNCILS
	SOUTHERN REGIONAL ORGANISATION OF COUNCILS
	GOLD COAST CITY COUNCIL BOUNDARY

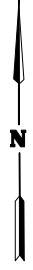
CONTEXT MAP CM-3 Location of Local Area Plans (Ver. 1.0)



© Gold Coast City Council 2003.
 Based on Cadastral Data provided with the permission of the Department of Natural Resources and Mines (current as at February 2003). While every care is taken to ensure the accuracy of this data, the Gold Coast City Council makes no representations or warranties about its accuracy, reliability, completeness or suitability for any particular purpose and disclaims all responsibility and all liability (including without limitation, liability in negligence) for all expenses, losses, damages (including indirect or consequential damage) and costs which you might incur as a result of the data being inaccurate or incomplete in any way and for any reason.



© The State of Queensland (Department of Natural Resources and Mines) 2003.
 While every care is taken to ensure the accuracy of this data, the Department of Natural Resources and Mines makes no representations or warranties about its accuracy, reliability, completeness or suitability for any particular purpose and disclaims all responsibility and all liability (including without limitation, liability in negligence) for all expenses, losses, damages (including indirect or consequential damage) and costs which you might incur as a result of the data being inaccurate or incomplete in any way and for any reason.



Legend

1	BEENLEIGH TOWN CENTRE	11	CURRUMBIN HILL	21	ROBINA
2	BROADBEACH	12	EAGLEBY	22	SOUTH STRADBROKE ISLAND
3	BUNDALL CENTRAL	13	EAST COOMERA/YAWALPAH	23	SOUTHPORT
4	BUNDALL EQUESTRIAN	14	GURAGUNBAH	24	SPRINGBROOK
5	BURLEIGH	15	HELENSVALE TOWN CENTRE	25	SURFERS PARADISE
6	BURLEIGH RIDGE	16	HOPE ISLAND	26	THE SPIT
7	CHEVRON ISLAND	17	MUDGEERABA VILLAGE	27	UPLANDS DRIVE AND WOODLANDS WAY
8	COOLANGATTA	18	NERANG	28	WEST BURLEIGH TOWNSHIP
9	COOMERA	19	PALM BEACH	29	YATALA ENTERPRISE AREA
10	COOMERA TOWN CENTRE	20	PARADISE POINT		