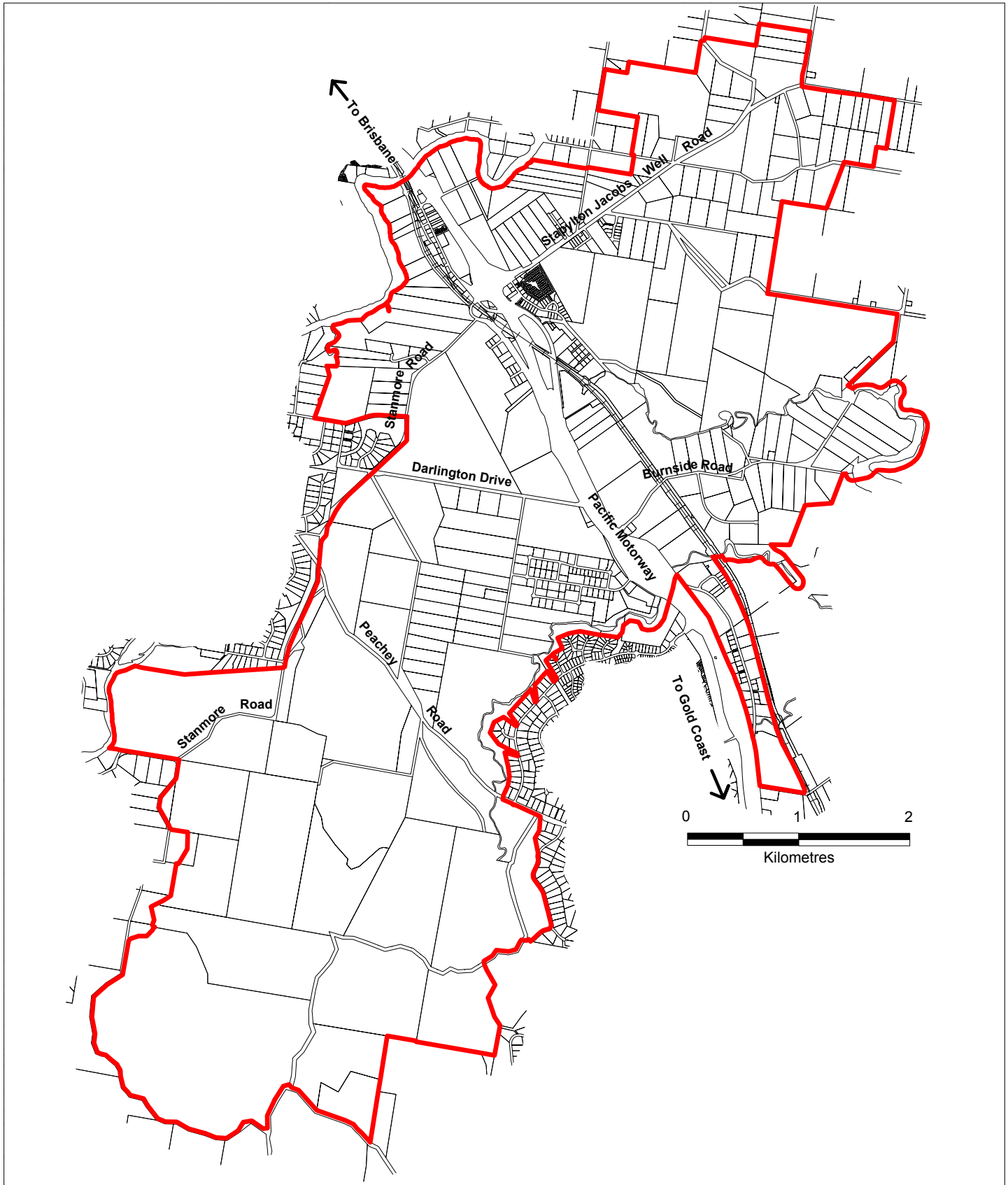
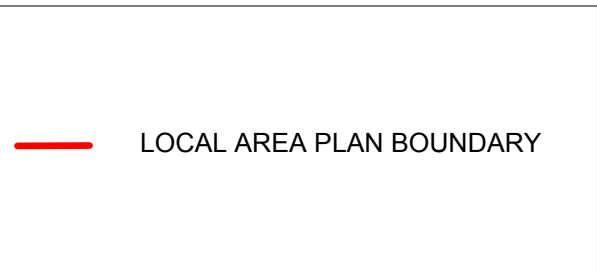


# Yatala Enterprise Area - LAP MAP 29.1 - Boundary (Ver 1.0)



© Gold Coast City Council 2003

## Legend



Gold Coast City Council



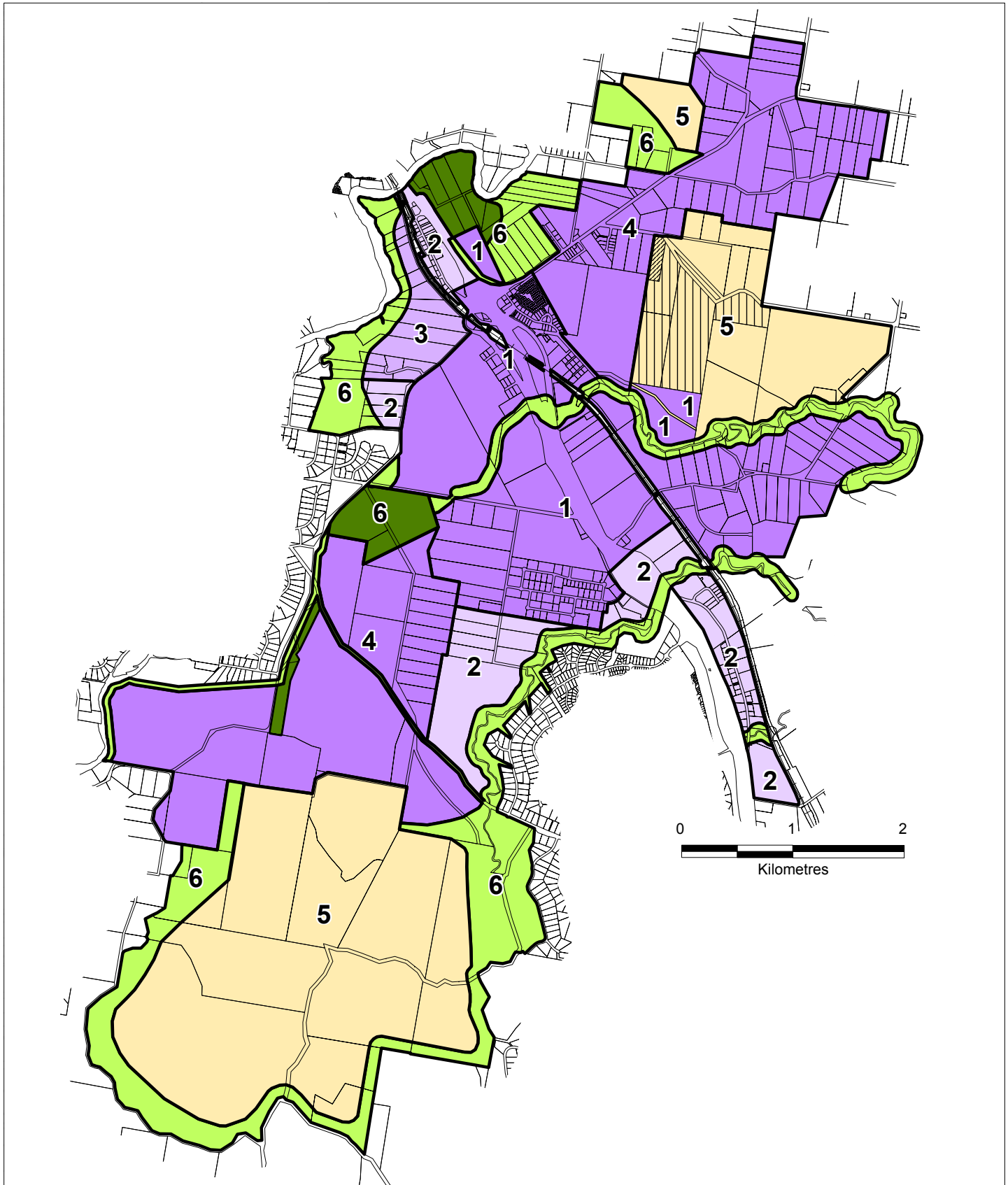
© The State of Queensland (Department of Natural Resources and Mines) 2003

Based on Cadastral Data provided with the permission of the Department of Natural Resources and Mines (current as at February 2003).  
 While every care is taken to ensure the accuracy of this data, the Gold Coast City Council makes no representations or warranties about its accuracy, reliability, completeness or suitability for any particular purpose and disclaims all responsibility and all liability (including without limitation, liability in negligence) for all expenses, losses, damages (including indirect or consequential damage) and costs which you might incur as a result of the data being inaccurate or incomplete in any way and for any reason.

While every care is taken to ensure the accuracy of this data, the Department of Natural Resources and Mines makes no representations or warranties about its accuracy, reliability, completeness or suitability for any particular purpose and disclaims all responsibility and all liability (including without limitation, liability in negligence) for all expenses, losses, damages (including indirect or consequential damage) and costs which you might incur as a result of the data being inaccurate or incomplete in any way and for any reason.



# Yatala Enterprise Area - LAP MAP 29.2 - Precincts (Ver 1.0)



© Gold Coast City Council 2003



Gold Coast City Council

Based on Cadastral Data provided with the permission of the Department of Natural Resources and Mines (current as at February 2003).  
 While every care is taken to ensure the accuracy of this data, the Gold Coast City Council makes no representations or warranties about its accuracy, reliability, completeness or suitability for any particular purpose and disclaims all responsibility and all liability (including without limitation, liability in negligence) for all expenses, losses, damages (including indirect or consequential damage) and costs which you might incur as a result of the data being inaccurate or incomplete in any way and for any reason.

© The State of Queensland (Department of Natural Resources and Mines) 2003

While every care is taken to ensure the accuracy of this data, the Department of Natural Resources and Mines makes no representations or warranties about its accuracy, reliability, completeness or suitability for any particular purpose and disclaims all responsibility and all liability (including without limitation, liability in negligence) for all expenses, losses, damages (including indirect or consequential damage) and costs which you might incur as a result of the data being inaccurate or incomplete in any way and for any reason.



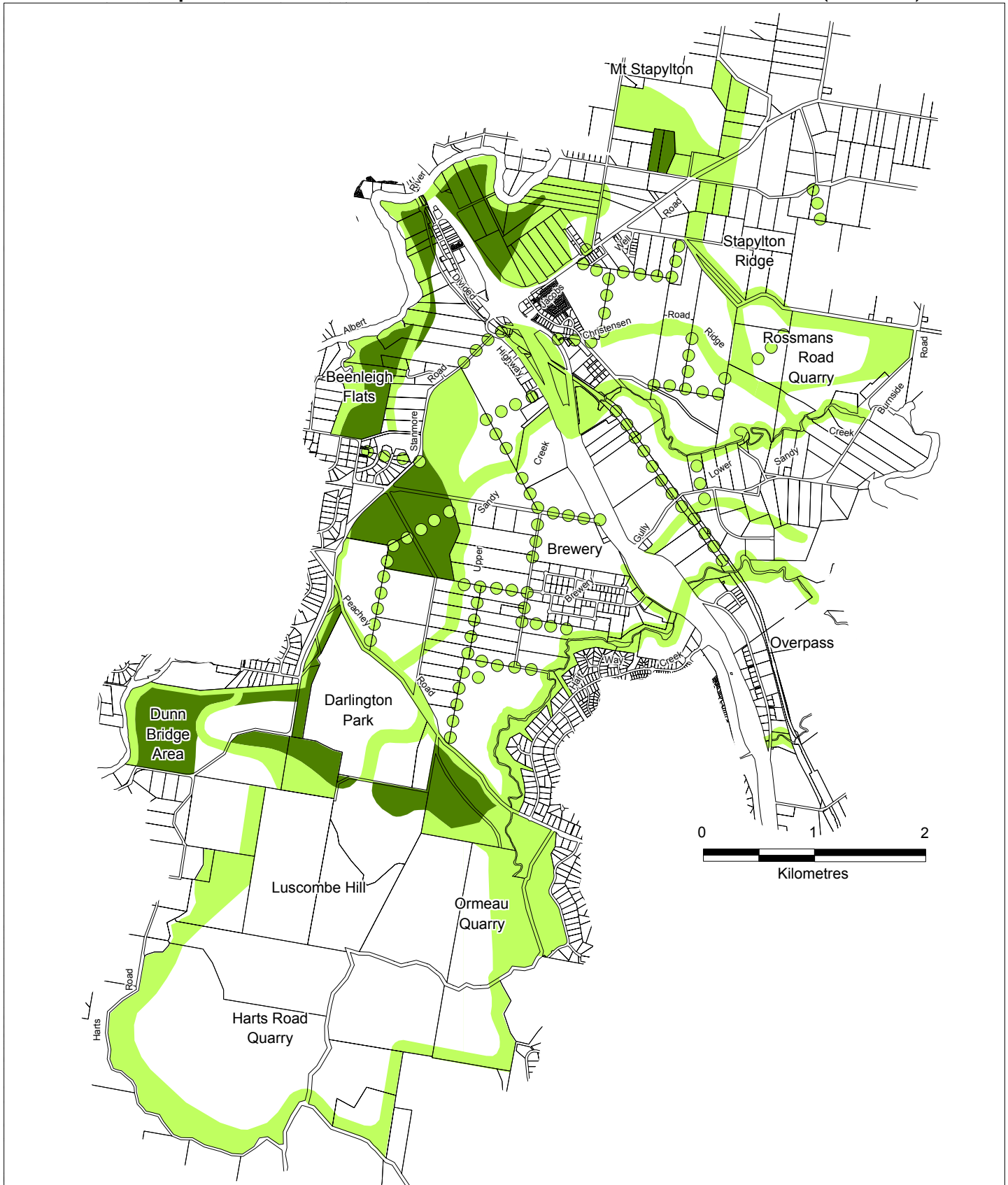
GDA



## Legend

1	GENERAL IMPACT BUSINESS AND INDUSTRY	5	EXTRACTIVE INDUSTRY
2	LOW IMPACT BUSINESS AND INDUSTRY	6	OPEN SPACE
3	FOOD AND PRODUCE INDUSTRY		DESIGNATED DEVELOPMENT - LANDFILL
4	FUTURE INDUSTRY		

# Yatala Enterprise Area - LAP MAP 29.3 - Conservation Area and Priorities (Ver. 1.0)



© Gold Coast City Council 2003

## Legend



Gold Coast City Council

Based on Cadastral Data provided with the permission of the Department of Natural Resources and Mines (current as at February 2003).

While every care is taken to ensure the accuracy of this data, the Gold Coast City Council makes no representations or warranties about its accuracy, reliability, completeness or suitability for any particular purpose and disclaims all responsibility and all liability (including without limitation, liability in negligence) for all expenses, losses, damages (including indirect or consequential damage) and costs which you might incur as a result of the data being inaccurate or incomplete in any way and for any reason.

© The State of Queensland (Department of Natural Resources and Mines) 2003

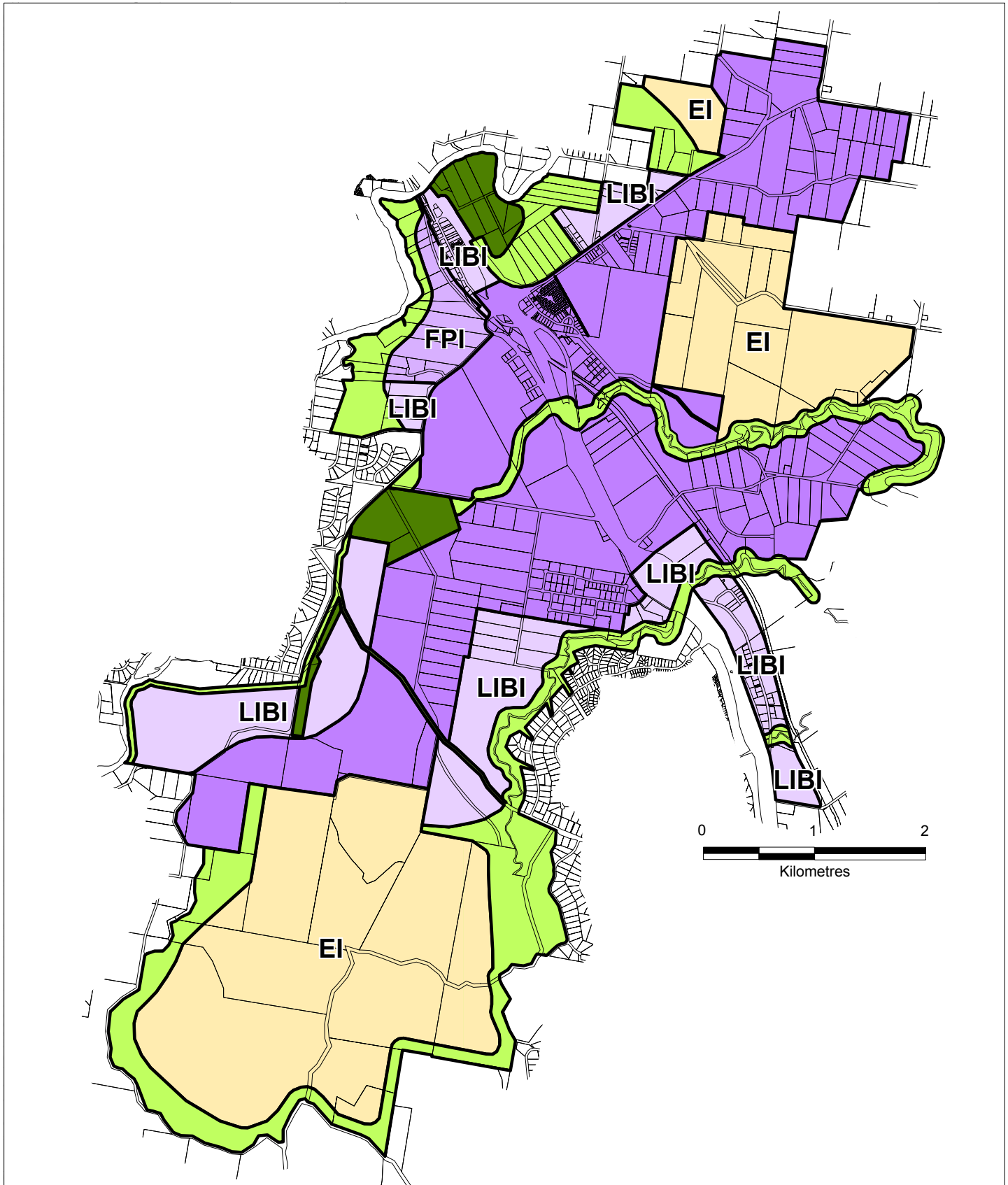
While every care is taken to ensure the accuracy of this data, the Department of Natural Resources and Mines makes no representations or warranties about its accuracy, reliability, completeness or suitability for any particular purpose and disclaims all responsibility and all liability (including without limitation, liability in negligence) for all expenses, losses, damages (including indirect or consequential damage) and costs which you might incur as a result of the data being inaccurate or incomplete in any way and for any reason.



GDA


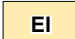





# Yatala Enterprise Area - LAP MAP 29.4 - Ultimate Precincts (Ver. 1.0)



© Gold Coast City Council 2003

## Legend

	GENERAL IMPACT BUSINESS AND INDUSTRY		EXTRACTIVE INDUSTRY
	LOW IMPACT BUSINESS AND INDUSTRY		OPEN SPACE
	FOOD AND PRODUCE INDUSTRY		



Gold Coast City Council



GDA

Based on Cadastral Data provided with the permission of the Department of Natural Resources and Mines (current as at February 2003).

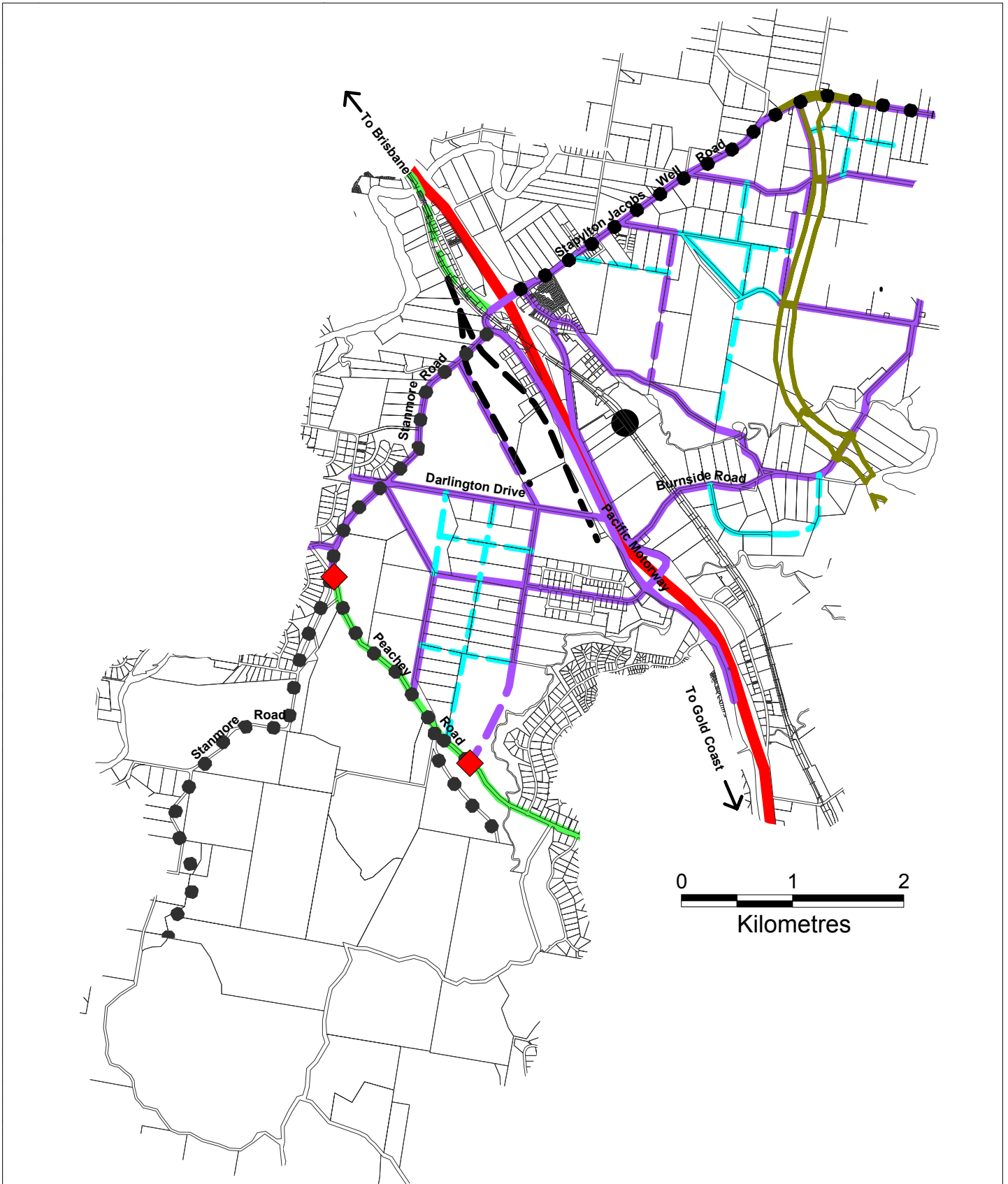
While every care is taken to ensure the accuracy of this data, the Gold Coast City Council makes no representations or warranties about its accuracy, reliability, completeness or suitability for any particular purpose and disclaims all responsibility and all liability (including without limitation, liability in negligence) for all expenses, losses, damages (including indirect or consequential damage) and costs which you might incur as a result of the data being inaccurate or incomplete in any way and for any reason.

© The State of Queensland (Department of Natural Resources and Mines) 2003

While every care is taken to ensure the accuracy of this data, the Department of Natural Resources and Mines makes no representations or warranties about its accuracy, reliability, completeness or suitability for any particular purpose and disclaims all responsibility and all liability (including without limitation, liability in negligence) for all expenses, losses, damages (including indirect or consequential damage) and costs which you might incur as a result of the data being inaccurate or incomplete in any way and for any reason.



# Yatala Enterprise Area - LAP MAP 29.5 - Transport Infrastructure (Ver. 1.0)



© Gold Coast City Council 2003

## Legend

	EXISTING RAILWAY		SUB ARTERIAL ROAD - NON INDUSTRIAL (PROPOSED)
	PROPOSED RAIL SPUR LINE (OPTIONS 1 & 2)		HAUL ROADS
	REGIONAL ROAD - PACIFIC HIGHWAY		CONNECTOR ROADS (EXISTING)
	ARTERIAL ROAD - MAJOR INDUSTRIAL (EXISTING)		CONNECTOR ROADS (PROPOSED)
	ARTERIAL ROAD - MAJOR INDUSTRIAL (PROPOSED)		INDUSTRIAL TRAFFIC CONTROL POINT
	SUB ARTERIAL ROAD - MAJOR INDUSTRIAL ROAD (EXISTING)		INTRA REGIONAL TRANSPORT CORRIDOR



Gold Coast City Council

Based on Cadastral Data provided with the permission of the Department of Natural Resources and Mines (current as at February 2003).

While every care is taken to ensure the accuracy of this data, the Gold Coast City Council makes no representations or warranties about its accuracy, reliability, completeness or suitability for any particular purpose and disclaims all responsibility and all liability (including without limitation, liability in negligence) for all expenses, losses, damages (including indirect or consequential damage) and costs which you might incur as a result of the data being inaccurate or incomplete in any way and for any reason.

© The State of Queensland (Department of Natural Resources and Mines) 2003

While every care is taken to ensure the accuracy of this data, the Department of Natural Resources and Mines makes no representations or warranties about its accuracy, reliability, completeness or suitability for any particular purpose and disclaims all responsibility and all liability (including without limitation, liability in negligence) for all expenses, losses, damages (including indirect or consequential damage) and costs which you might incur as a result of the data being inaccurate or incomplete in any way and for any reason.



GDA