

# EVACUATION SIGN

ADVANCE GROUP OF COMPANIES

Fire Systems | Lifts | Pumps | Property

1300 116 675



## EVACUATION PROCEDURES

### IN CASE OF FIRE

**R**

REMOVE PEOPLE FROM IMMEDIATE DANGER

(Do not obstruct Exits & Exit Routes)

**A**

ALERT PEOPLE NEARBY AND RAISE AN ALARM

(DIAL 000 and ask for the Fire Brigade)

**C**

CONFINE FIRE & SMOKE

Close doors behind you and where practicable, windows (if safe to do so)

**E**

EVACUATE

To the ASSEMBLY AREA

If an EVACUATION is required

- Secure your area and evacuate the building via the nearest safe exit and proceed to your external Assembly Area.
- Ensure other occupants are aware of the evacuation and assist if necessary

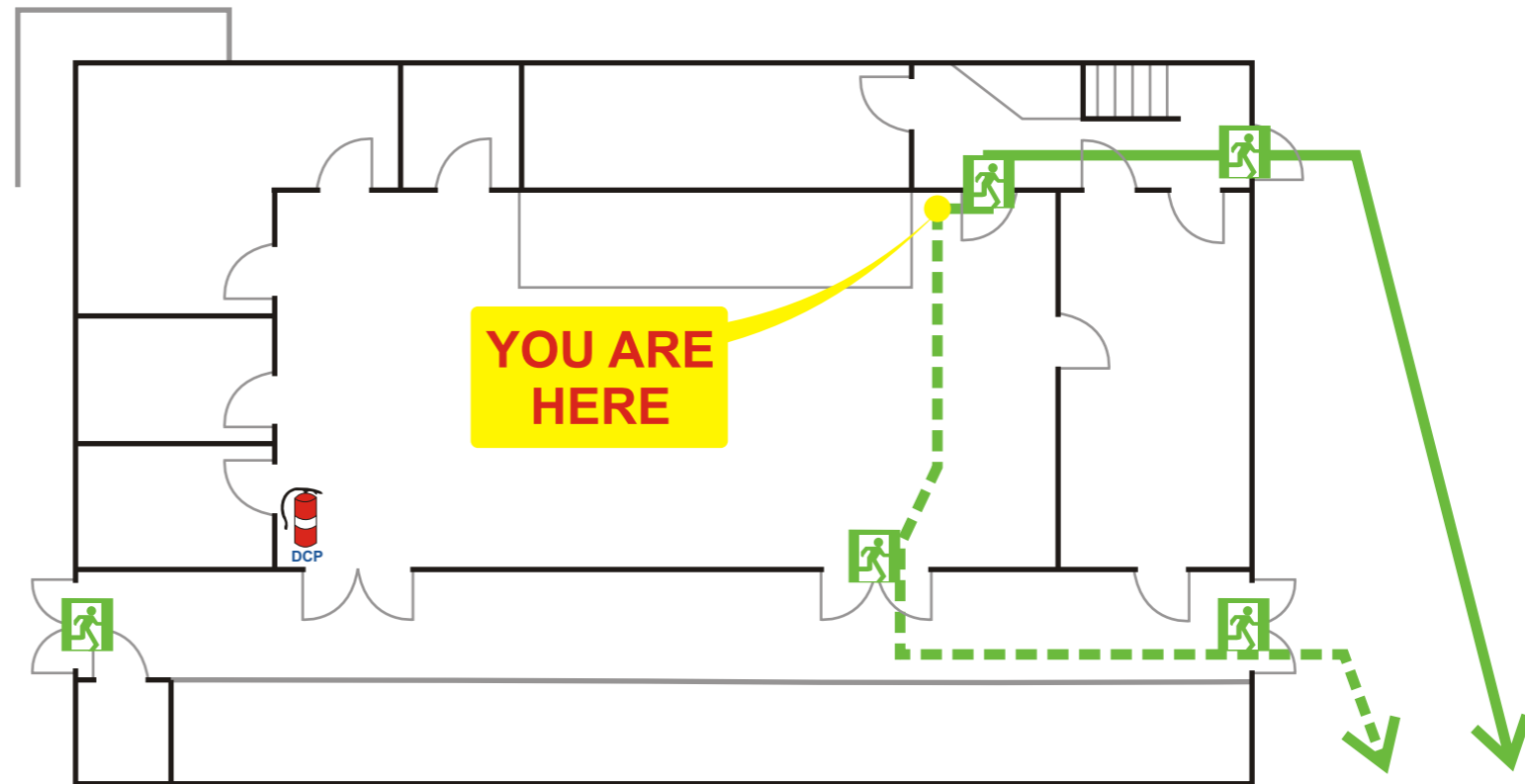
At the Assembly Area...

- Account for the people on your floor
- Report any person missing to the responsible authorities

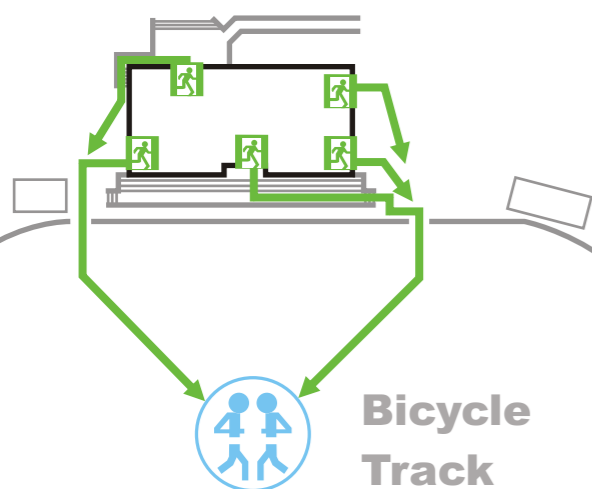
Address: Hope Street

Location: Nerang

## EVACUATION DIAGRAM

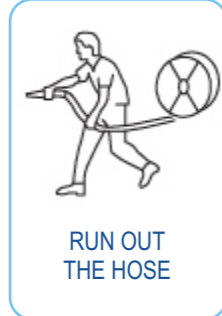
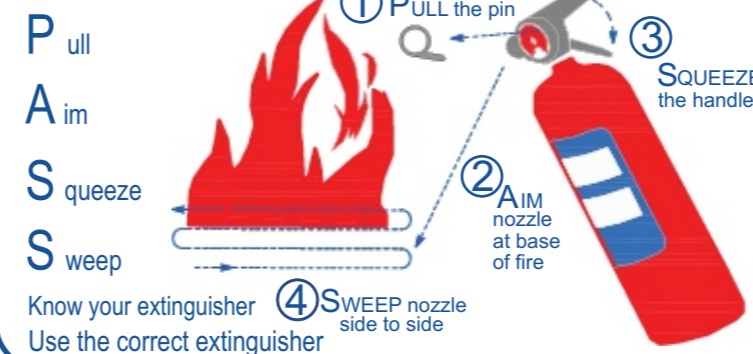


## SITE PLAN / ASSEMBLY AREA



Mobility impaired persons should evacuate immediately on hearing the fire alarm assisted by a nominated person.

### To operate an extinguisher



NOTE: Fire Hose Reels are only to be used on class "A" type fires which are Wood, Paper, Textiles etc;

## LEGEND

- ← Path Of Exit
- ← Alternative Path
- ⊙ You Are Here
- EXIT
- Assembly Area
- Fire Extinguisher

ADVANCE GROUP OF COMPANIES

Fire Systems | Lifts | Pumps | Property

1300 116 675



Site Name: Nerang Bicycle Track

Site Address: Hope Street, Nerang

Site Owner: Gold Coast City Council

Date: 18.12.2011

Author: DL

File: Nerang Bicycle Track - Evac Diagram

NOT TO SCALE

# EVACUATION SIGN

ADVANCE GROUP OF COMPANIES

Fire Systems | Lifts | Pumps | Property

1300 116 675



## EVACUATION PROCEDURES

### IN CASE OF FIRE

**R**

REMOVE PEOPLE FROM IMMEDIATE DANGER

(Do not obstruct Exits & Exit Routes)

**A**

ALERT PEOPLE NEARBY AND RAISE AN ALARM

(DIAL 000 and ask for the Fire Brigade)

**C**

CONFINE FIRE & SMOKE

Close doors behind you and where practicable, windows (if safe to do so)

**E**

EVACUATE

To the ASSEMBLY AREA

If an EVACUATION is required

- Secure your area and evacuate the building via the nearest safe exit and proceed to your external Assembly Area.
- Ensure other occupants are aware of the evacuation and assist if necessary

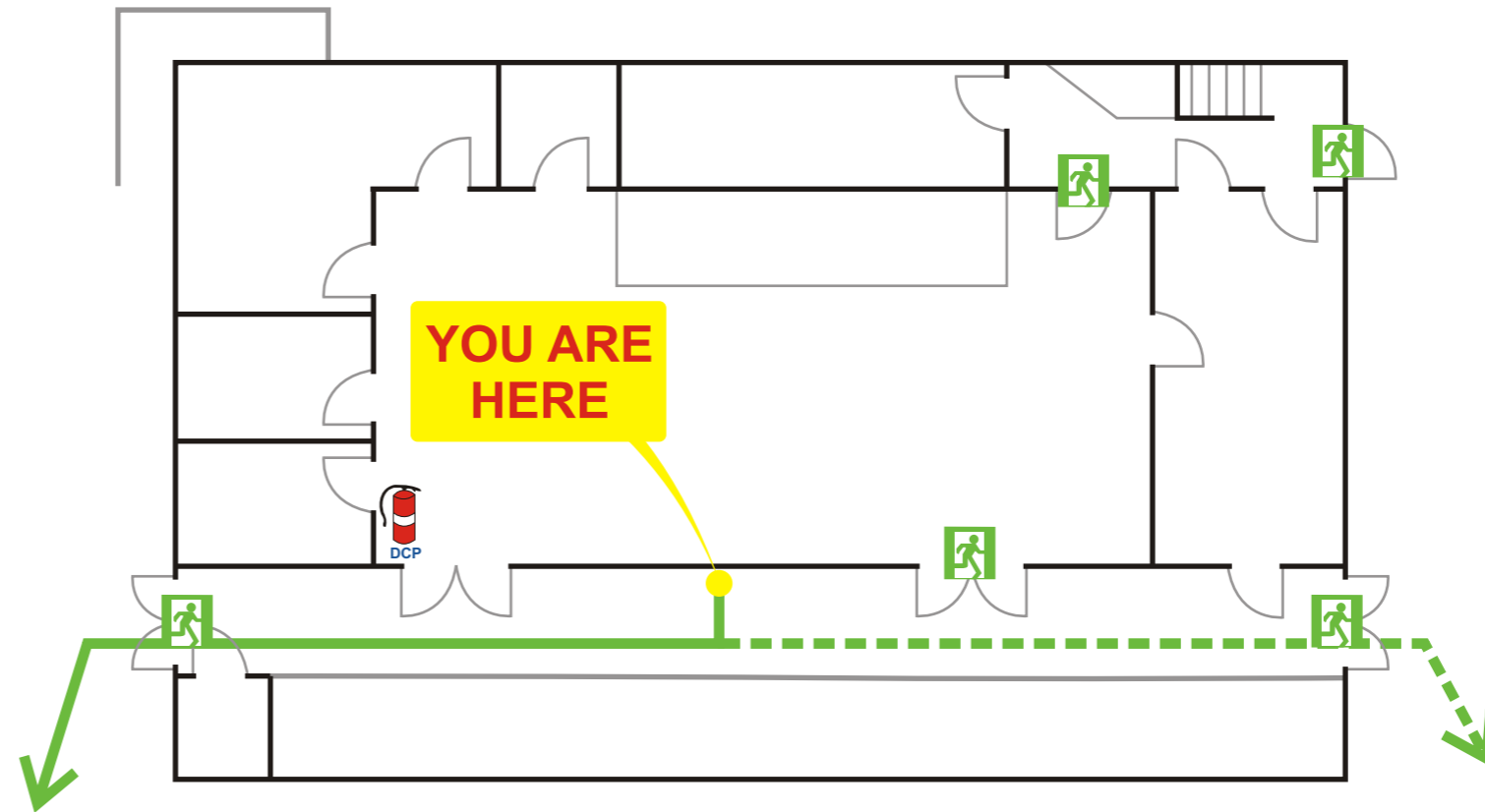
At the Assembly Area...

- Account for the people on your floor
- Report any person missing to the responsible authorities

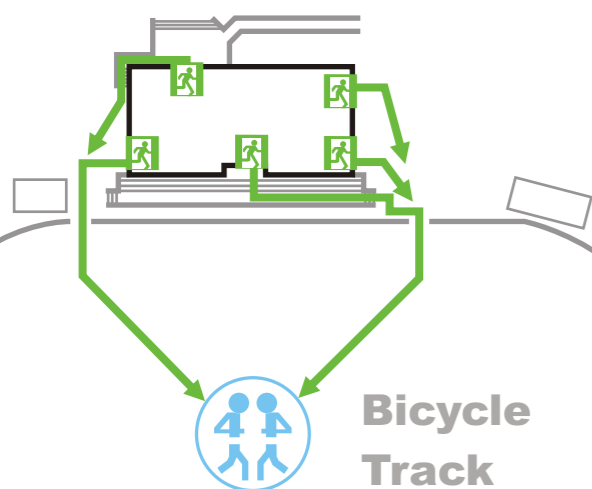
Address: Hope Street

Location: Nerang

## EVACUATION DIAGRAM



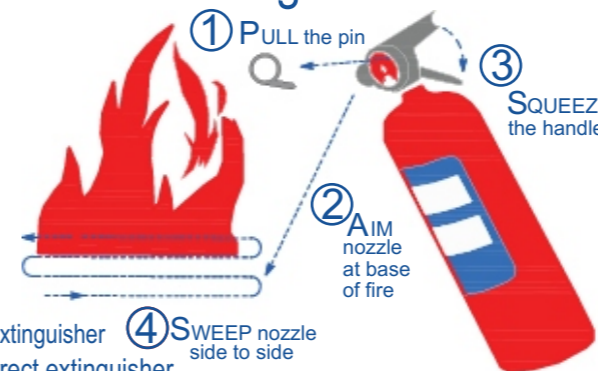
## SITE PLAN / ASSEMBLY AREA



Mobility impaired persons should evacuate immediately on hearing the fire alarm assisted by a nominated person.

### To operate an extinguisher

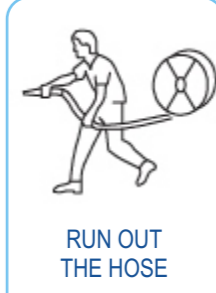
**P**ull  
**A**im  
**S**queeze  
**S**weep



Know your extinguisher  
Use the correct extinguisher



TURN ON STOP VALVE TO RELEASE NOZZLE



RUN OUT THE HOSE



TURN ON WATER AT NOZZLE AND DIRECT THE STREAM AT THE BASE OF FIRE

NOTE: Fire Hose Reels are only to be used on class "A" type fires which are Wood, Paper, Textiles etc;

## LEGEND

← Path Of Exit

← Alternative Path



Assembly Area

● You Are Here



EXIT



Fire Extinguisher

ADVANCE GROUP OF COMPANIES

Fire Systems | Lifts | Pumps | Property

1300 116 675



Site Name: Nerang Bicycle Track

Site Address: Hope Street, Nerang

Site Owner: Gold Coast City Council

Date: 18.12.2011

Author: DL

File: Nerang Bicycle Track - Evac Diagram

NOT TO SCALE

# EVACUATION SIGN

ADVANCE GROUP OF COMPANIES

Fire Systems | Lifts | Pumps | Property

1300 116 675



## EVACUATION PROCEDURES

### IN CASE OF FIRE

**R**

REMOVE PEOPLE FROM IMMEDIATE DANGER

(Do not obstruct Exits & Exit Routes)

**A**

ALERT PEOPLE NEARBY AND RAISE AN ALARM

(DIAL 000 and ask for the Fire Brigade)

**C**

CONFINE FIRE & SMOKE

Close doors behind you and where practicable, windows (if safe to do so)

**E**

EVACUATE

To the ASSEMBLY AREA

If an EVACUATION is required

- Secure your area and evacuate the building via the nearest safe exit and proceed to your external Assembly Area.
- Ensure other occupants are aware of the evacuation and assist if necessary

At the Assembly Area...

- Account for the people on your floor
- Report any person missing to the responsible authorities

Address: Hope Street

Location: Nerang



TURN ON STOP VALVE TO RELEASE NOZZLE



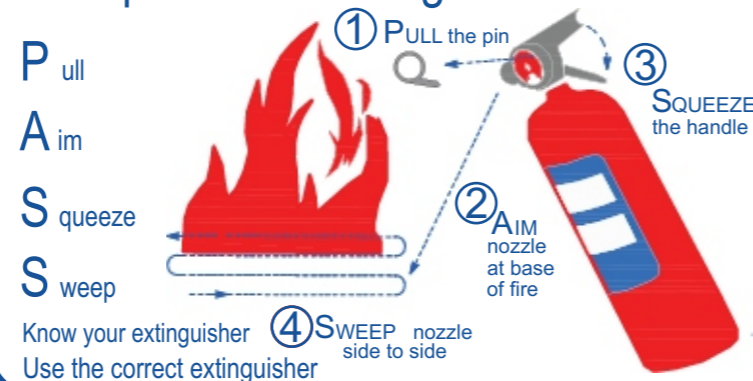
RUN OUT THE HOSE



TURN ON WATER AT NOZZLE AND DIRECT THE STREAM AT THE BASE OF FIRE

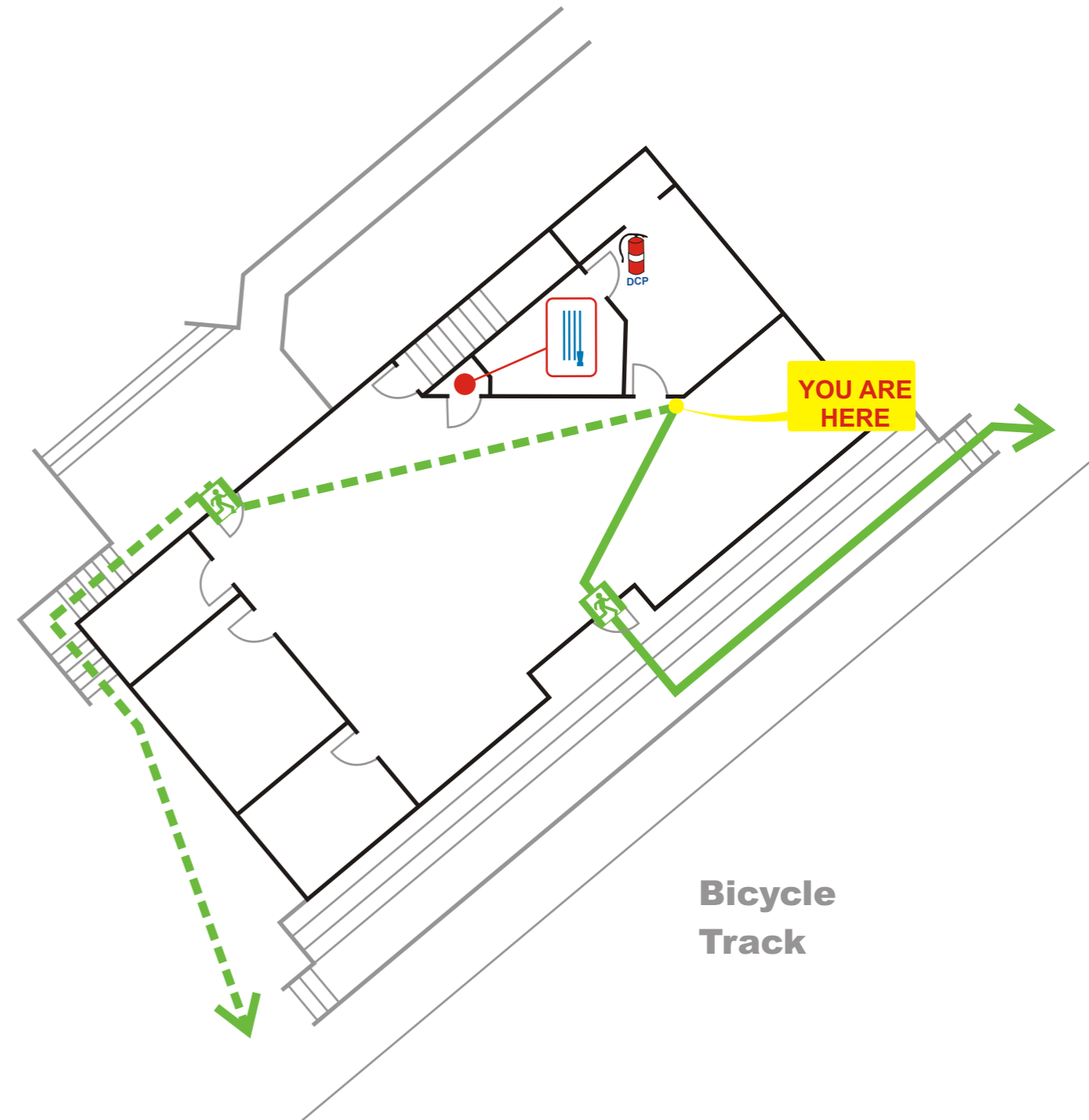
NOTE: Fire Hose Reels are only to be used on class "A" type fires which are Wood, Paper, Textiles etc;

### To operate an extinguisher

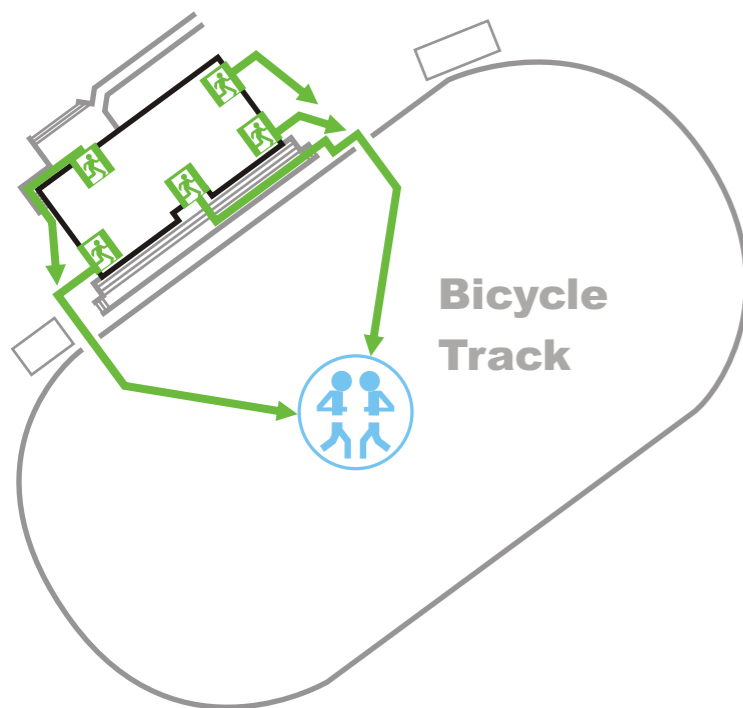


Mobility impaired persons should evacuate immediately on hearing the fire alarm assisted by a nominated person.

## EVACUATION DIAGRAM



## SITE PLAN / ASSEMBLY AREA



### LEGEND



Path Of Exit

Alternative Path

Assembly Area

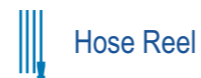
You Are Here



EXIT



Fire Extinguisher



Hose Reel

ADVANCE GROUP OF COMPANIES

Fire Systems | Lifts | Pumps | Property

1300 116 675



Site Name: Nerang Bicycle Track

Site Address: Hope Street, Nerang

Site Owner: Gold Coast City Council

Date: 18.12.2011

Author: DL

File: Nerang Bicycle Track - Evac Diagram

NOT TO SCALE

# EVACUATION SIGN

ADVANCE GROUP OF COMPANIES

Fire Systems | Lifts | Pumps | Property

1300 116 675



## EVACUATION PROCEDURES

### IN CASE OF FIRE

**R**

REMOVE PEOPLE FROM IMMEDIATE DANGER

(Do not obstruct Exits & Exit Routes)

**A**

ALERT PEOPLE NEARBY AND RAISE AN ALARM

(DIAL 000 and ask for the Fire Brigade)

**C**

CONFINE FIRE & SMOKE

Close doors behind you and where practicable, windows (if safe to do so)

**E**

EVACUATE

To the ASSEMBLY AREA

If an EVACUATION is required

- Secure your area and evacuate the building via the nearest safe exit and proceed to your external Assembly Area.
- Ensure other occupants are aware of the evacuation and assist if necessary

At the Assembly Area...

- Account for the people on your floor
- Report any person missing to the responsible authorities

Address: Hope Street

Location: Nerang



TURN ON STOP VALVE TO RELEASE NOZZLE



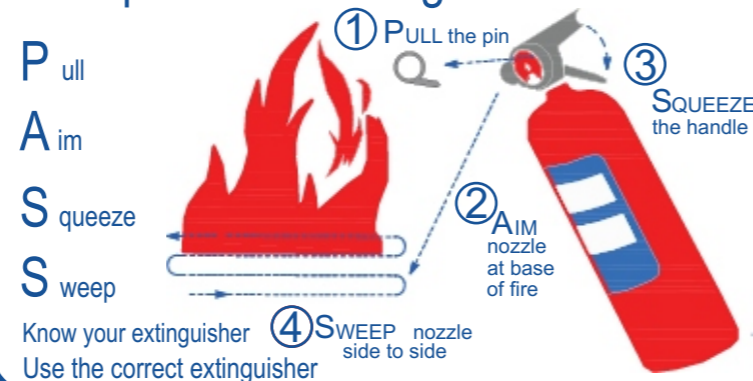
RUN OUT THE HOSE



TURN ON WATER AT NOZZLE AND DIRECT THE STREAM AT THE BASE OF FIRE

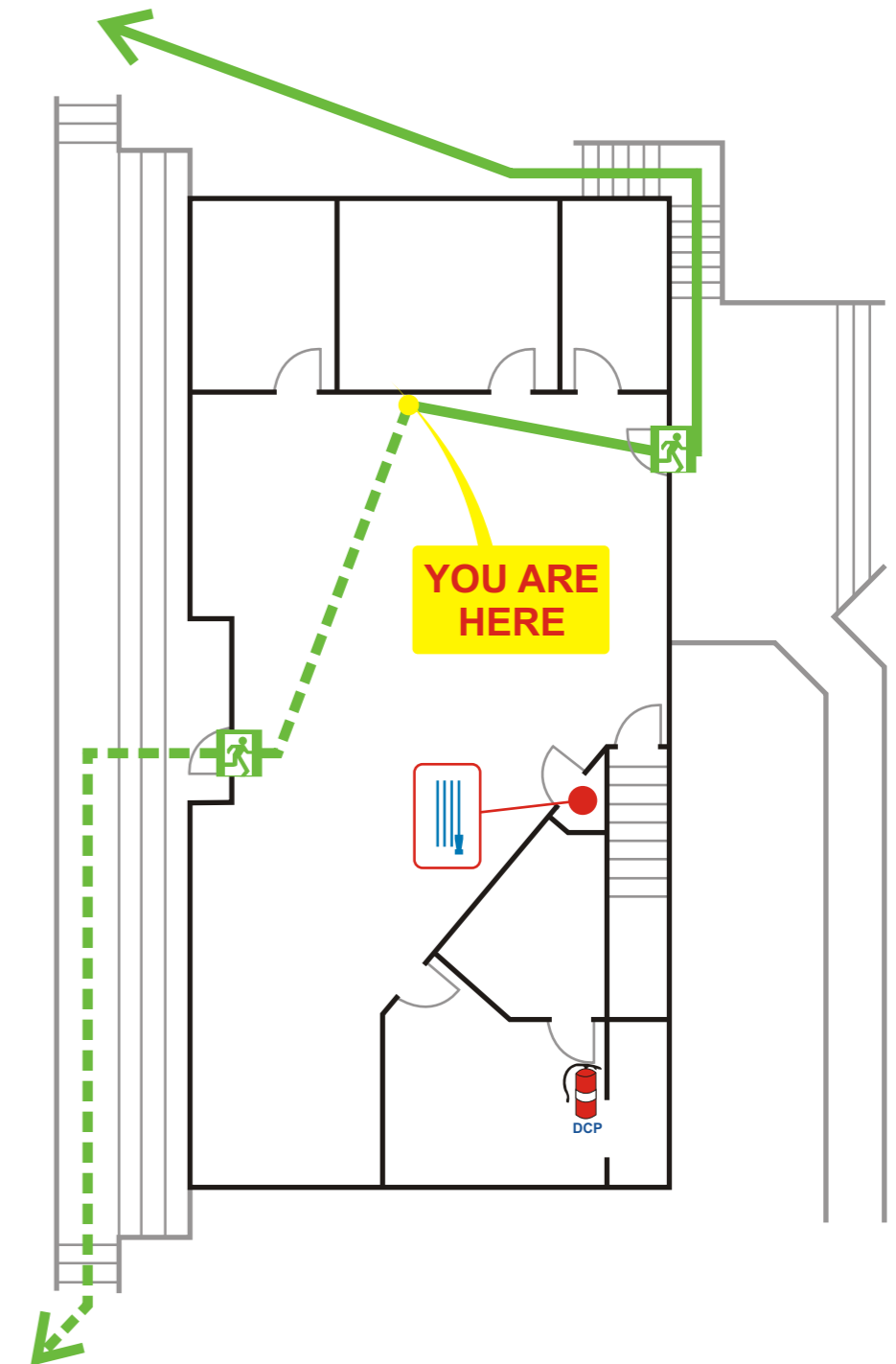
NOTE: Fire Hose Reels are only to be used on class "A" type fires which are Wood, Paper, Textiles etc;

### To operate an extinguisher

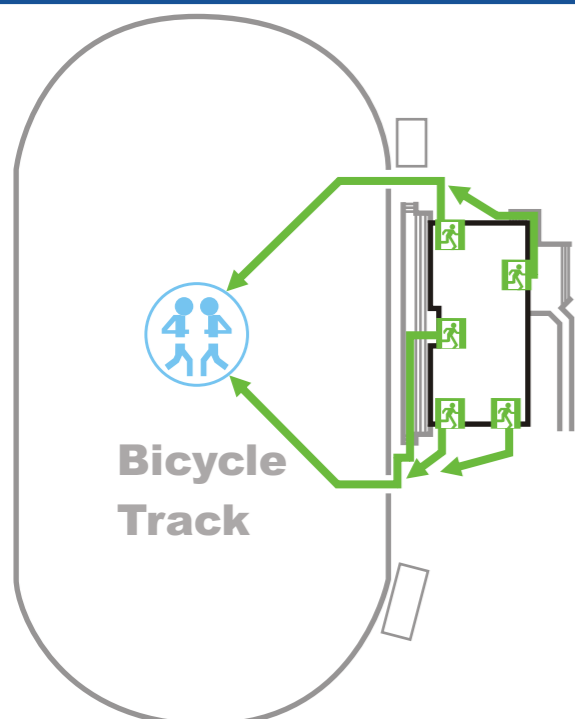


Mobility impaired persons should evacuate immediately on hearing the fire alarm assisted by a nominated person.

## EVACUATION DIAGRAM



## SITE PLAN / ASSEMBLY AREA



### LEGEND

← Path Of Exit

← Alternative Path



Assembly Area

● You Are Here



EXIT



Fire Extinguisher

||| Hose Reel

ADVANCE GROUP OF COMPANIES

Fire Systems | Lifts | Pumps | Property

1300 116 675



Site Name: Nerang Bicycle Track

Site Address: Hope Street, Nerang

Site Owner: Gold Coast City Council

Date: 18.12.2011

Author: DL

File: Nerang Bicycle Track

NOT TO SCALE - Evac Diagram