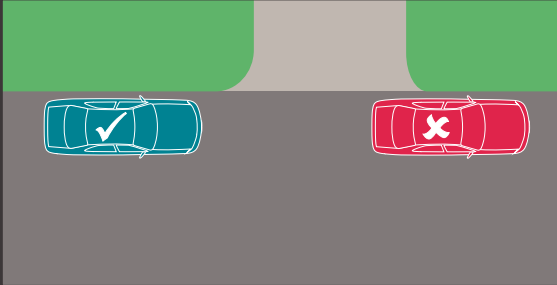


Safe and legal parking tips

It is the responsibility of all drivers to abide by the road rules. The following information will assist in understanding some of the lesser known, or most commonly overlooked rules which apply to motorists on the Gold Coast.

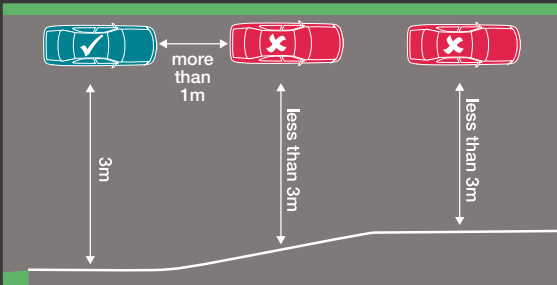
1. Parallel parking

Motorists must not park on a road or in a position that obstructs access by vehicles or pedestrians to, or from, a footpath ramp or driveway.



2. Road width

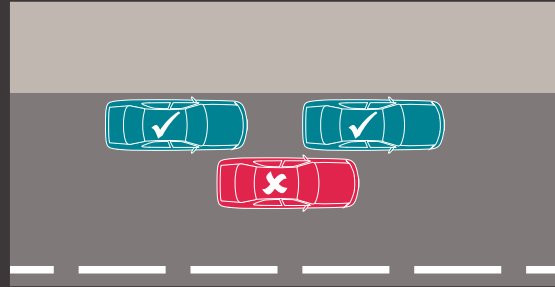
When parked parallel to the kerb, motorists must leave at least three metres of clear roadway between their vehicle and another vehicle, the centreline, dividing strips etc.



Please note: images are not to scale

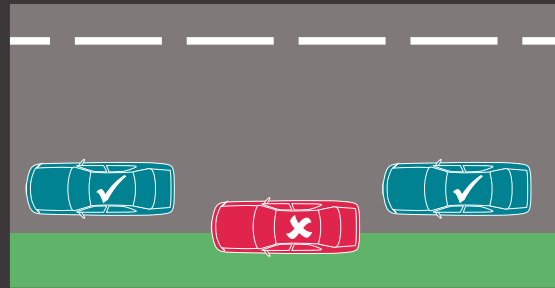
3. Double parking

Motorists must not park between the centre of a road and a parked vehicle.



4. Nature strips and footpaths

Motorists must not park any part of a vehicle on a nature strip or footpath. This applies to all vehicles, including motorcycles and unattached e.g. trailers.



The City is continually realising ways to ensure our parking system supports the economic vitality and suburban amenity of our city by implementing initiatives for equitable access to all users in areas, including:

- Parking Areas to support overflow parking in residential regions
- local parking plans tailored to ensure centres remain vibrant places to visit, shop, eat and play.

For more information and to download a copy of our comprehensive guide to parking on the Gold Coast, visit cityofgoldcoast.com.au/parking

CITY OF
GOLDCOAST.

A QUICK GUIDE TO SAFE AND LEGAL PARKING ON THE GOLD COAST



CGC/14456

CITY OF
GOLDCOAST.

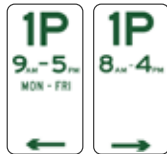
The City of Gold Coast (City) provides and manages car parking in the city. Parking restrictions are used to encourage safety, accessibility and equity of parking to all. It is important that motorists are aware of, and abide by, the parking rules.

We are regularly called upon to help residents when parked or stopped vehicles are restricting local access and traffic flow.

Management of parking

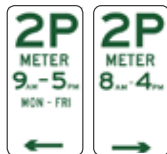
Regulated parking areas are clearly marked to avoid confusion. Please follow the tips and rules contained in this guide and always remember to check the sign to avoid the fine.

Be familiar with signs and lines



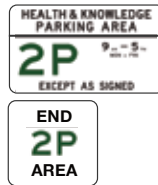
Timed parking signs

During the hours and days displayed, vehicles can stay up to the maximum time stated on the parking sign at no charge. Where no days are noted, the restrictions apply every day. The maximum stay permitted is indicated on the sign i.e. 1P = 1 hour maximum stay. After this time you must move your vehicle from the parking space.



Paid parking signs

Bays requiring payment are denoted by the word METER. During the hours and days displayed, parking must be paid for. Where no days are noted, the restrictions apply every day. The maximum stay permitted is indicated on the sign i.e. 2P = 2 hour maximum stay. After this time you must move your vehicle from the parking space. Disability parking permit holders are exempt from payment.



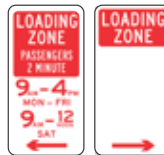
Parking Area signs

The Parking Area sign is used to notify motorists they are entering a geographical area where parking times and restrictions apply. A Parking Area entry sign will be installed on each street entering the area, and the end signs at similarly located exit points. The maximum stay permitted is indicated on the sign i.e. 2P = 2 hour maximum stay. After this time you must move your vehicle from the parking space. Please note: a Parking Area is also referred to as a Traffic Area.



Disability parking signs

The use of disability parking bays is restricted to vehicles displaying a valid disability parking permit.



Loading Zone signs

There are a number of variances with Loading Zone restrictions. Where no details are stated, the maximum times are: commercial vehicle goods loading up to 30 minutes, private vehicle goods loading up to 20 minutes and passenger loading up to 2 minutes.



No stopping signs

Motorists may not stop or park along a section of road displaying the black and red No Stopping symbol. In some instances, stopping is only prohibited during the times and days noted. Where no times or days are displayed, motorists may not stop at any time.



No parking yellow line

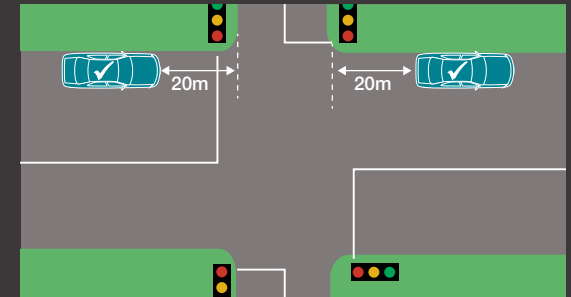
A yellow line painted adjacent to the kerb has the same meaning as a No Stopping sign and motorists may not stop or park along that section of road at any time.

Safe and legal parking tips

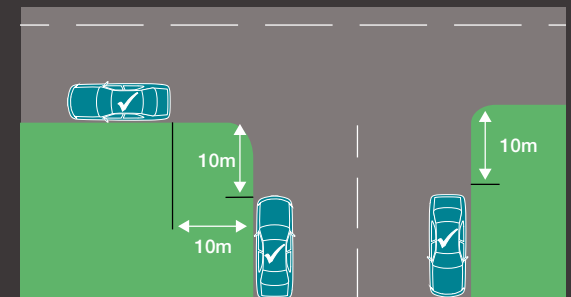
Intersections and crossings

Motorists must not stop or park within:

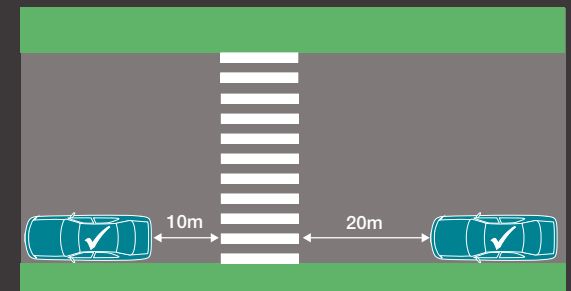
- 20 metres of an intersection with **traffic lights**



- 10 metres of an intersection without **traffic lights**



- 20 metres before, and 10 metres after, a **pedestrian crossing**.



Please note: images are not to scale