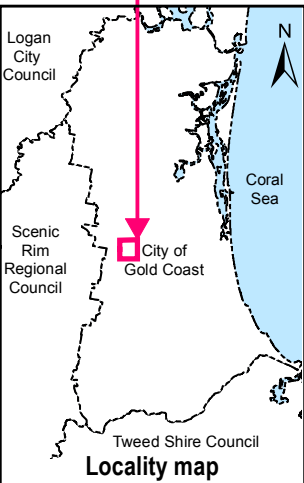
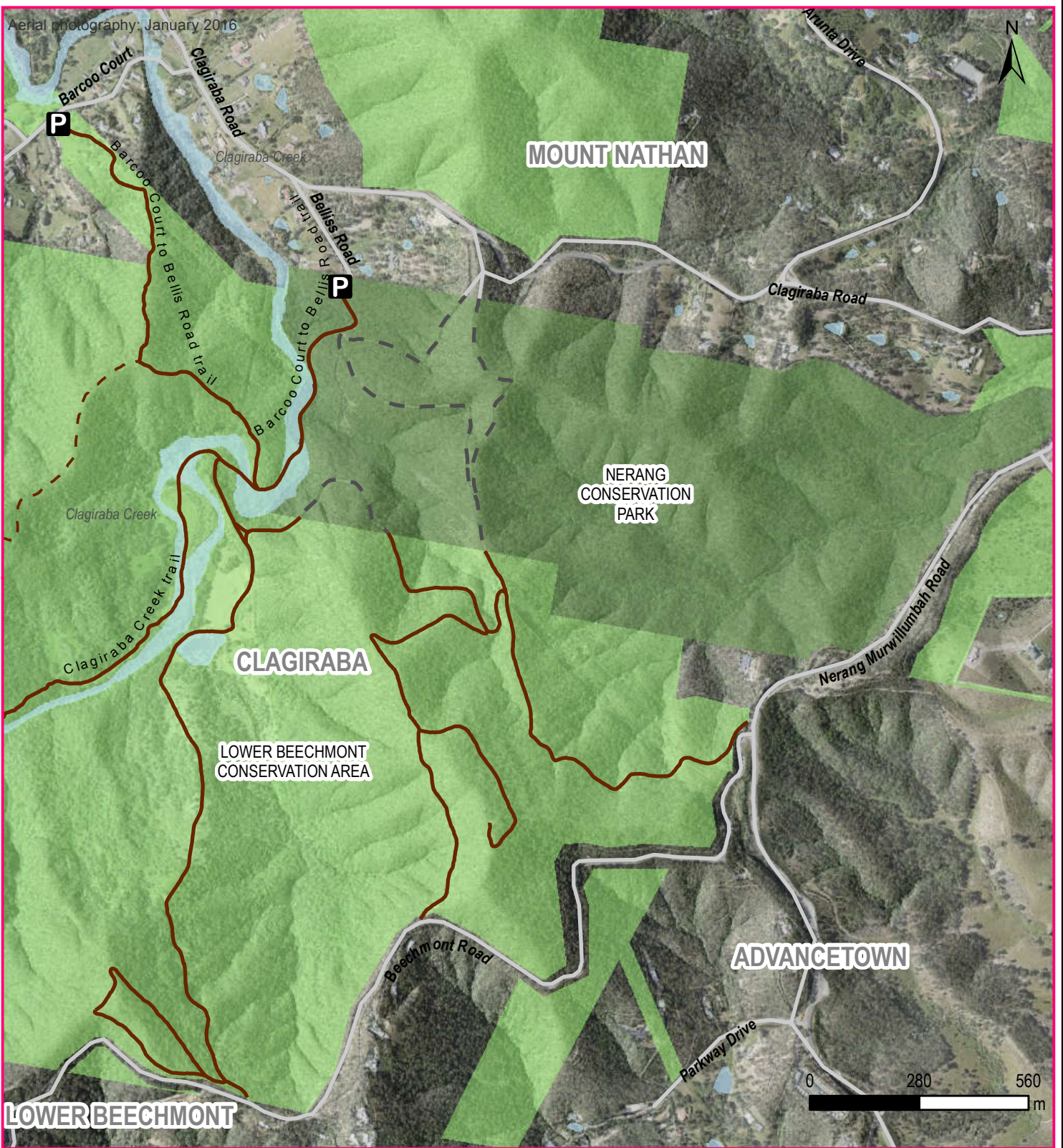


Aerial photography: January 2016



Gold Coast nature trails

Lower Beechmont Conservation Area (eastern section)

These trails are great for horse riding, mountain biking, bush walking and nature study. Some of the trails link with those in Nerang Conservation Park (contact Queensland Parks and Wildlife Service for information). This is a rugged reserve with steep hills. There are no toilets. City parks are dog on leash unless otherwise indicated. Toilets are not available. City parks are dog on leash unless otherwise indicated. For more information visit www.cityofgoldcoast.com.au/naturetrails or telephone 07 5582 8211.

Legend

- Parking available
- City recreation trail
- City management trail
- State managed horse trail
- City managed parks
- State managed park (e.g. National Parks)

CITY OF **GOLDCOAST**

Disclaimer: © Council of the City of Gold Coast, Queensland 2016 or © State of Queensland 2016. No warranty given in relation to the data (including accuracy, reliability, completeness or suitability) and no liability accepted (including without limitation, liability in negligence) for any loss, damage or costs (including consequential damage) relating to any use of the data. Data must not be used for direct marketing or be used in breach of the privacy laws.