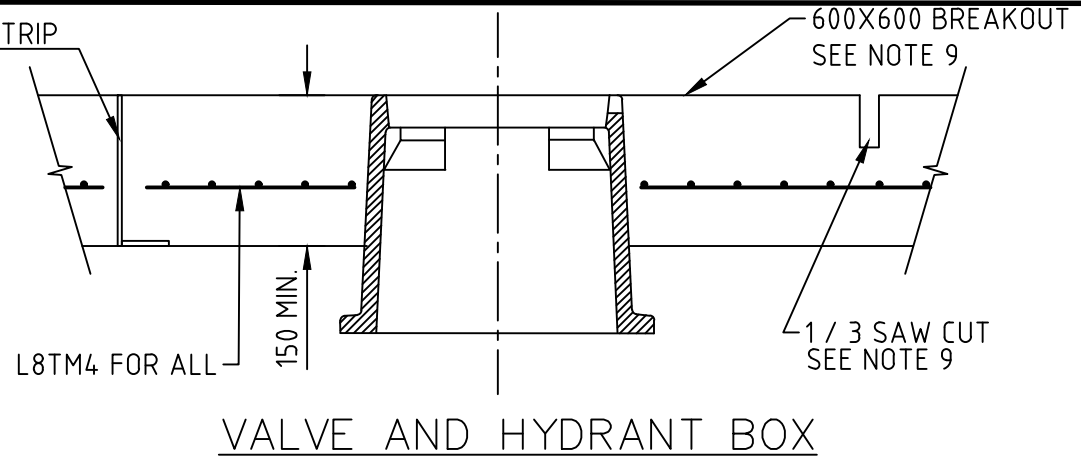
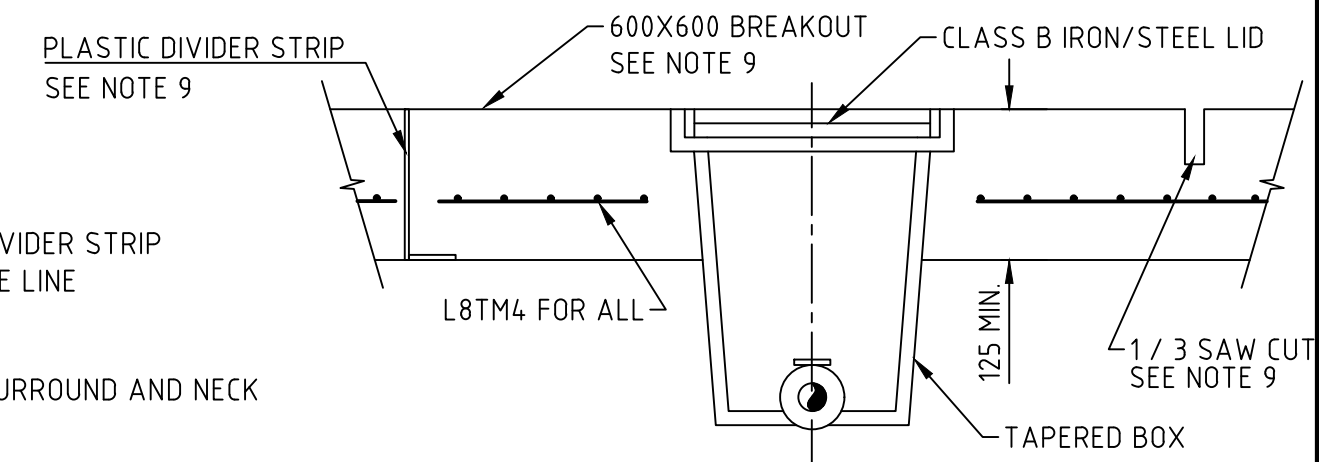


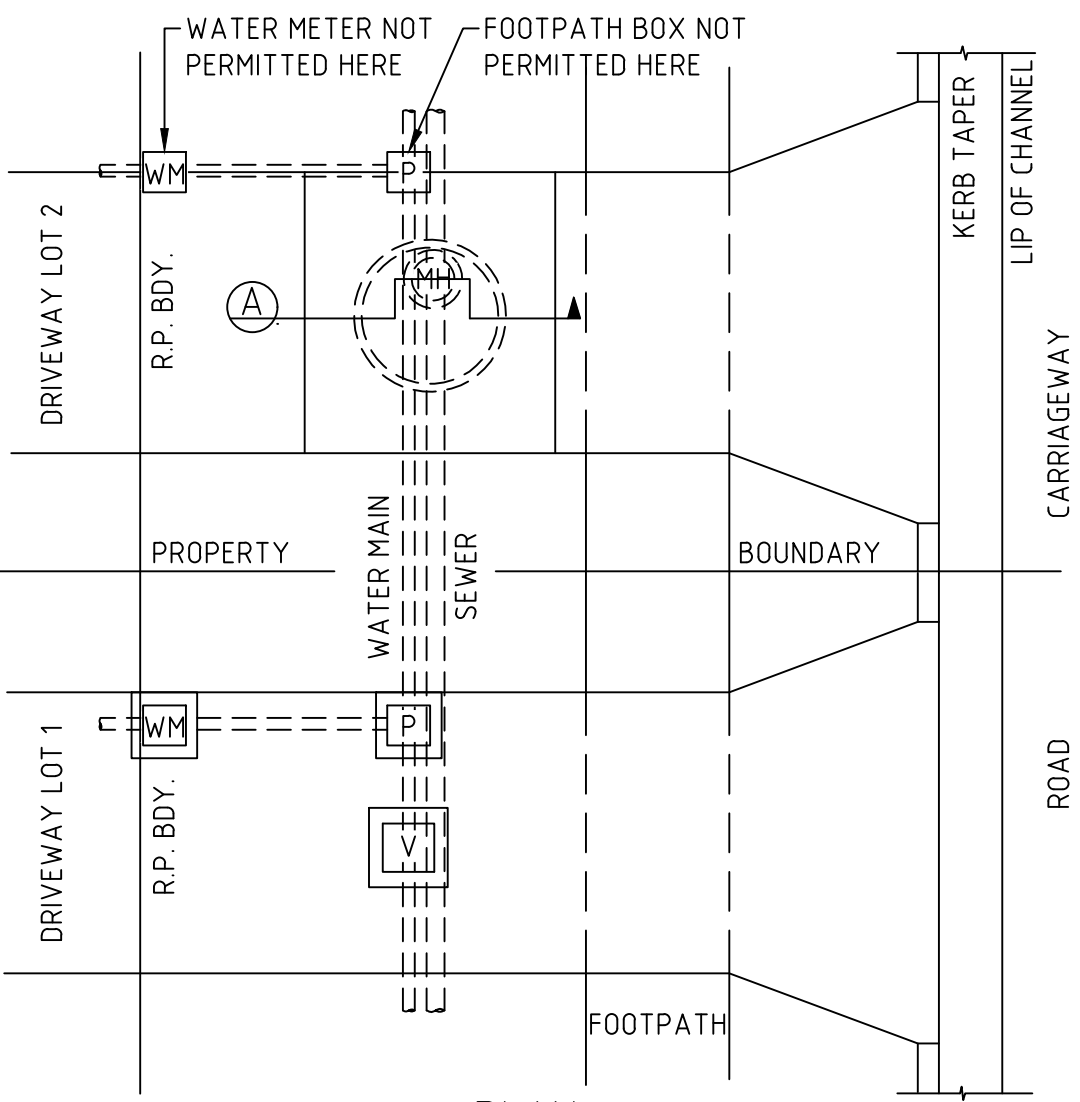
TYPICAL SECTION



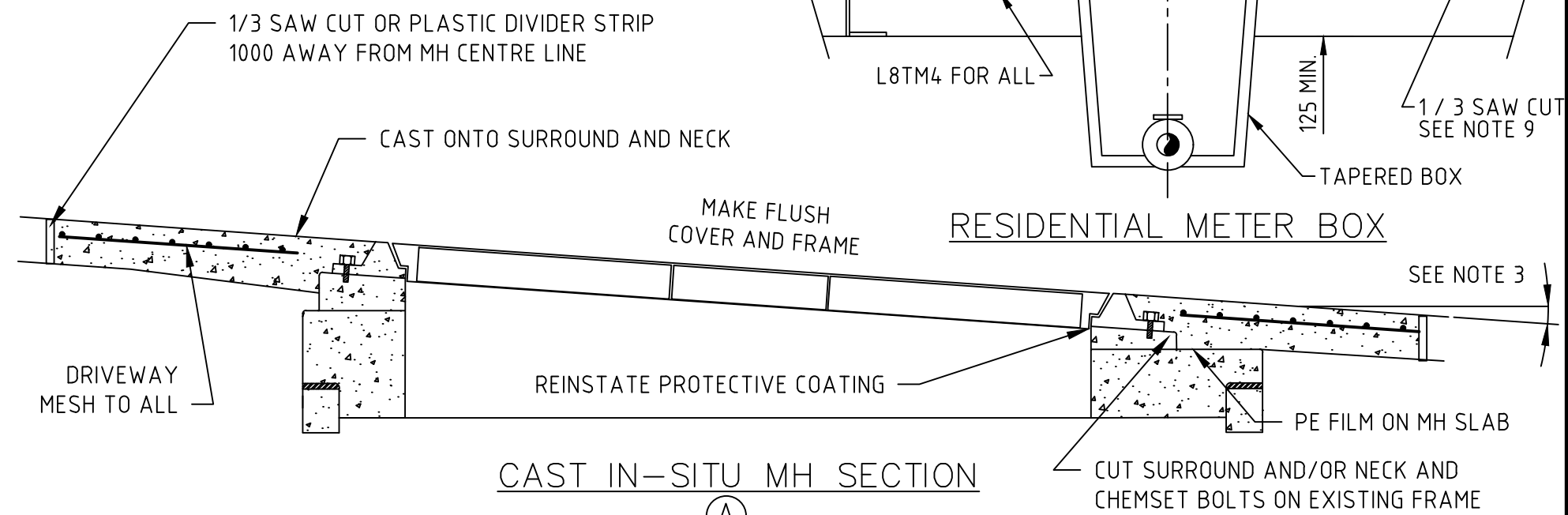
VALVE AND HYDRANT BOX



RESIDENTIAL METER BOX



PLAN



CAST IN-SITU MH SECTION

NOTES:

1. THE DETAILS SHOWN ARE ACCEPTABLE SOLUTIONS FOR PERFORMANCE CRITERIA P7 & A7(C) OF QUEENSLAND DEVELOPMENT CODE NMP 1.1. THESE ACCEPTABLE SOLUTIONS ARE PROVIDED FOR THE USE WHERE IT IS NOT POSSIBLE TO RELOCATE THE FITTINGS OUT OF DRIVEWAYS AND WHERE COUNCIL'S PRIORITY PERMISSION IS OBTAINED.
2. MATERIAL AND ASSEMBLY FORMATS NOT SHOWN ARE TO COMPLY WITH SEQ DESIGN AND CONSTRUCTION CODE.
3. MAXIMUM CROSSFALL OF DRIVEWAY AND FOOTPATH TO BE COMPLIANT WITH CITY OF GOLD COAST CITY PLAN.
4. EXISTING IRON BOXES FOR HYDRANTS AND VALVES SHALL HAVE A BREAKOUT AREA OF 600X600 AS SHOWN ON THE DRIVEWAY SLAB. THE HYDRANT OR VALVE ASSEMBLIES ARE TO THE DETAILS SHOWN IN SEQ-WAT-1300 DRAWING SET.
5. WATER SERVICE FOOTPATH BOXES ARE REQUIRED FOR RESIDENTIAL DRIVEWAYS WITH WATER SERVICE ROAD BOXES TO BE USED FOR COMMERCIAL DRIVEWAYS AND CARRIAGEWAYS, REFER ITEM 41 IN STD DWG 11-133. FOR A WATER SERVICE FOOTPATH BOX, CAST THE BOX INTO DRIVEWAY SLAB AS SHOWN ON STD DWG 11-134.
6. LICENCED PERSON ONLY TO INSTALL METER ASSEMBLIES.
7. TAPERED METER BOXES SHALL HAVE A METAL LID AT CLASS B WITH A BREAKOUT AREA OF 600X600.
8. FOR OTHER ASSETS NOT SHOWN, THE GENERAL SUPPORT AND FINISH DETAILS SHOWN IN THIS DRAWING ARE TO BE APPLIED TO THESE ASSETS.
9. BREAKOUT AREA BOUNDARY SHALL BE PROVIDED WITH EITHER 1/3 SAW CUT OR PLASTIC DIVIDER STRIPS.
10. ALL DIMENSIONS ARE IN MILLIMETERS.

DRAWN BY:					
D. LI					
CHECKED BY:					
N. PEARSON					
APPROVED BY:					
D. LI					
	A	NOTE 1 UPDATED.	31/7/21	DL	
	No.	REVISION	DATE	APPROVED	

SCALE: DO NOT SCALE
TAKE FIGURED DIMENSION ONLY

THIS DRAWING IS NOT TO BE AMENDED WITHOUT WATER, WASTE AND ENERGY ACCEPTANCE

CITY OF GOLD COAST
WATER, WASTE AND ENERGY

PO BOX 5042, GOLD COAST MC 9729

STANDARD DRAWING
EXISTING SURFACE FITTINGS ON PROPOSED DRIVEWAYS FOR COMPLIANCE TO NMP 1.1

ORIGINAL ISSUE DATE:	31/01/2019
SHEET OF	
DRAWING No:	11-161
REV:	A