

LEGEND

-  KURRAWA TERRACE EVENT SPACE
-  1 KURRAWA SLSC
-  2 GOLD COAST LIGHT RAIL STATIONS
-  3 GOLD COAST CONVENTION CENTRE
-  4 THE STAR GOLD COAST
-  5 PACIFIC FAIR SHOPPING CENTRE



Locality Plan

Drawing No.: 001  
 Issue: A  
 Scale: 1:5000@A3  
 Date: October 2021



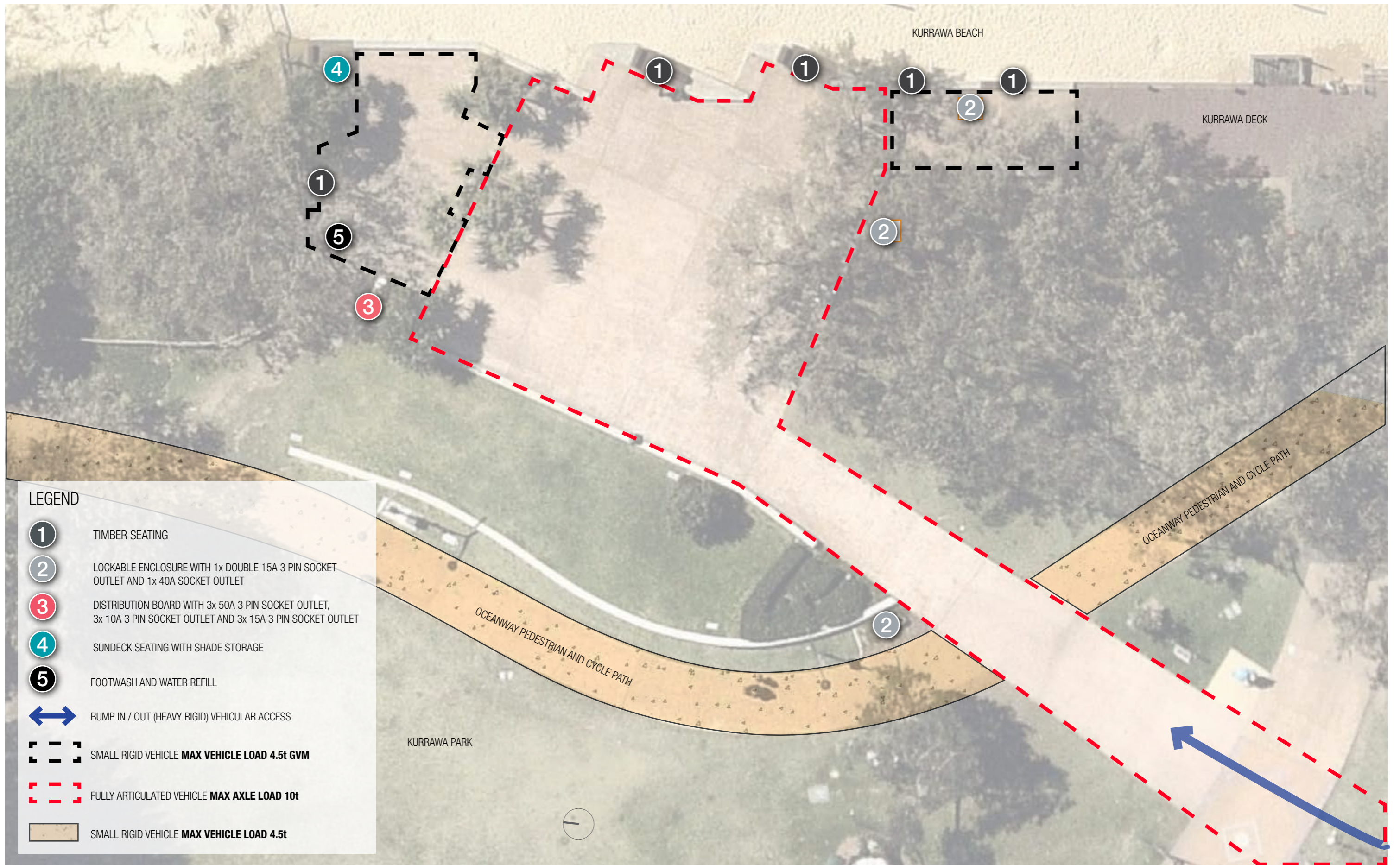


# Kurrawa Terrace Event Space

Drawing No.: 002  
Issue: A

Scale: 1:500@A3  
Date: October 2021





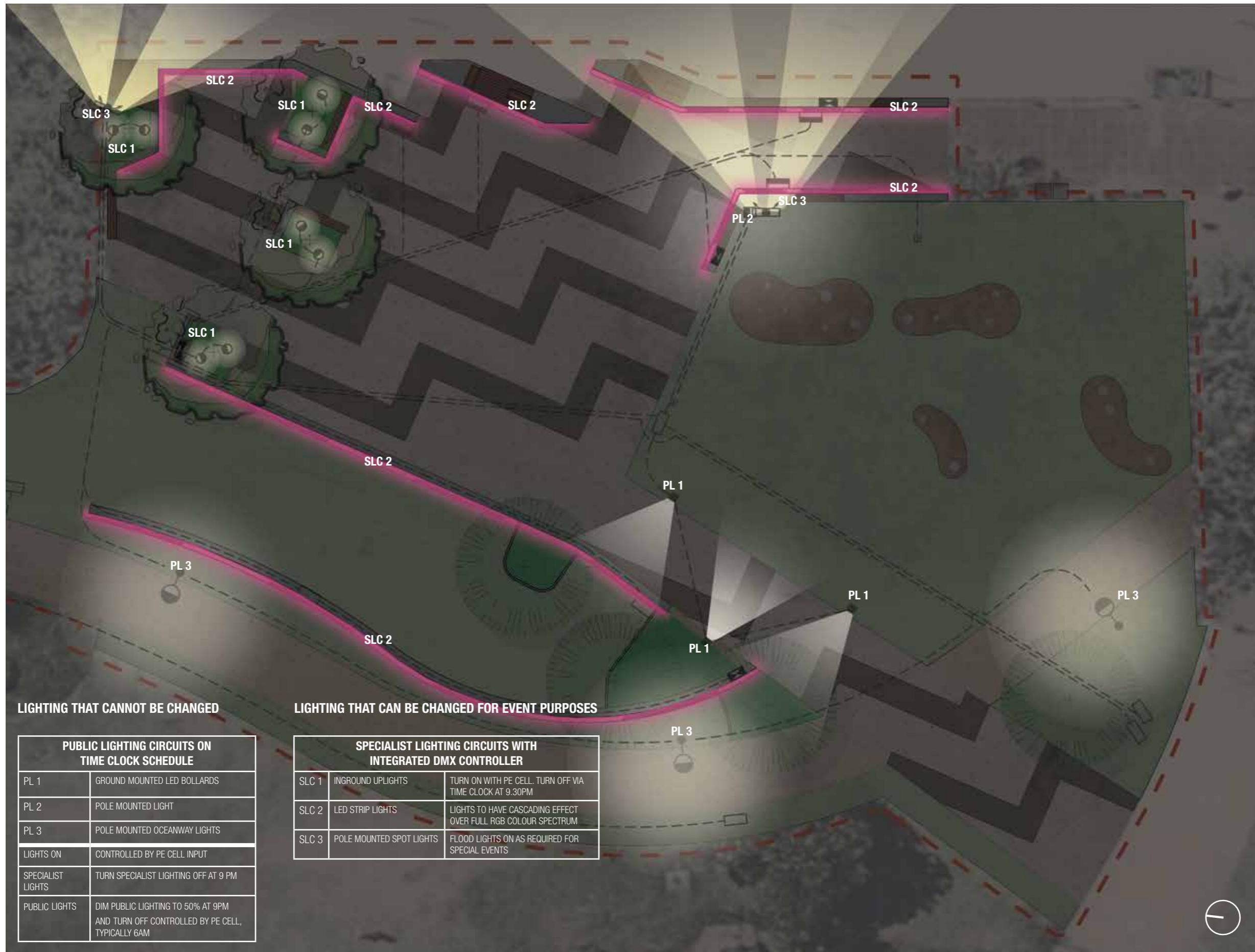
**LEGEND**

- 1 TIMBER SEATING
- 2 LOCKABLE ENCLOSURE WITH 1x DOUBLE 15A 3 PIN SOCKET OUTLET AND 1x 40A SOCKET OUTLET
- 3 DISTRIBUTION BOARD WITH 3x 50A 3 PIN SOCKET OUTLET, 3x 10A 3 PIN SOCKET OUTLET AND 3x 15A 3 PIN SOCKET OUTLET
- 4 SUNDECK SEATING WITH SHADE STORAGE
- 5 FOOTWASH AND WATER REFILL
- ↔ BUMP IN / OUT (HEAVY RIGID) VEHICULAR ACCESS
- SMALL RIGID VEHICLE **MAX VEHICLE LOAD 4.5t GVM**
- FULLY ARTICULATED VEHICLE **MAX AXLE LOAD 10t**
- SMALL RIGID VEHICLE **MAX VEHICLE LOAD 4.5t**

**Event Overlay Plan**

Drawing No.: 003    Scale: 1:200@A3  
 Issue: A    Date: October 2021





**LIGHTING THAT CANNOT BE CHANGED**

PUBLIC LIGHTING CIRCUITS ON TIME CLOCK SCHEDULE	
PL 1	GROUND MOUNTED LED BOLLARDS
PL 2	POLE MOUNTED LIGHT
PL 3	POLE MOUNTED OCEANWAY LIGHTS
LIGHTS ON	CONTROLLED BY PE CELL INPUT
SPECIALIST LIGHTS	TURN SPECIALIST LIGHTING OFF AT 9 PM
PUBLIC LIGHTS	DIM PUBLIC LIGHTING TO 50% AT 9PM AND TURN OFF CONTROLLED BY PE CELL, TYPICALLY 6AM

**LIGHTING THAT CAN BE CHANGED FOR EVENT PURPOSES**

SPECIALIST LIGHTING CIRCUITS WITH INTEGRATED DMX CONTROLLER		
SLC 1	INGROUND UPLIGHTS	TURN ON WITH PE CELL, TURN OFF VIA TIME CLOCK AT 9.30PM
SLC 2	LED STRIP LIGHTS	LIGHTS TO HAVE CASCADING EFFECT OVER FULL RGB COLOUR SPECTRUM
SLC 3	POLE MOUNTED SPOT LIGHTS	FLOOD LIGHTS ON AS REQUIRED FOR SPECIAL EVENTS



**(SLC 1)**  
INGROUND UPLIGHTS



**(SLC 2)**  
PROGRAMMABLE LED STRIP LIGHTS



**(SLC 3)**  
POLE MOUNTED SPOT LIGHTS



**(PL 1)**  
GROUND MOUNTED LED BOLLARDS

# Lighting Plan

**Drawing No.:** 004 **Scale:** 1:200@A3  
**Issue:** A **Date:** October 2021



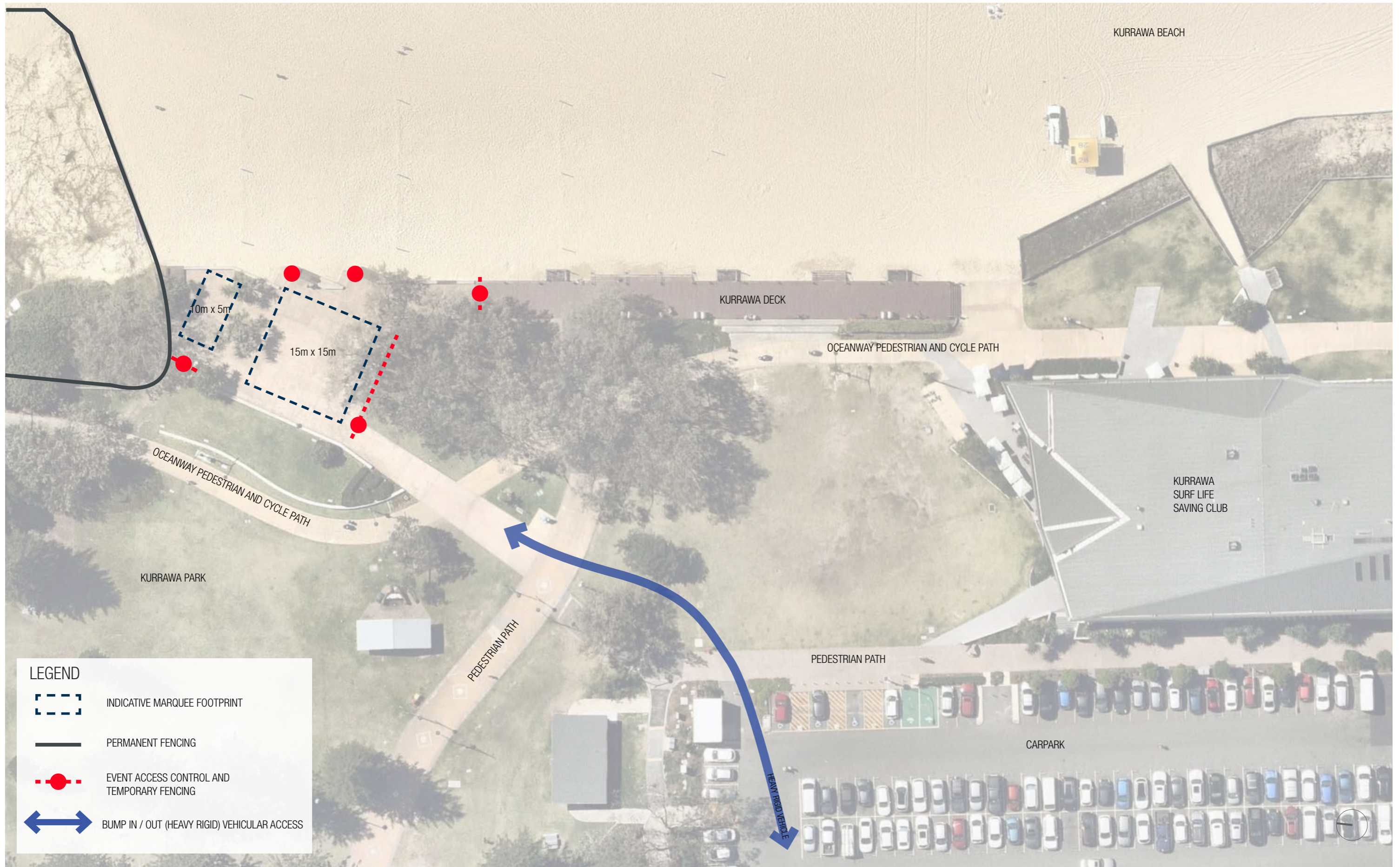


## Safety Management Plan - Bump In/Out

Drawing No.: 005  
Issue: A

Scale: 1:500@A3  
Date: October 2021





# Small Event Overlay Plan

Drawing No.: 006  
Issue: A

Scale: 1:500@A3  
Date: October 2021





## Basic Site Plan


Drawing No.: 007  
Issue: A

Scale: 1:500@A3  
Date: October 2021





**LEGEND**

-  KEY POTENTIAL RISK AREAS
-  MAINTAINING OCEANWAY AND DECK ACCESS AND CLEAR SIGHT LINES
-  ELECTRICAL OUTLET LOCATIONS
-  SAND ON CONCRETE AS SLIP HAZARD
-  TRIP / FALL FROM SEATING, WALLS OR DECK
-  DARK BEACH AREAS WITHOUT PASSIVE SURVEILLANCE
-  ACCESS CONTROL POINTS

**Safety Management Plan - Duration of Event**

Drawing No.: 008    Scale: 1:200@A3  
 Issue: A    Date: October 2021

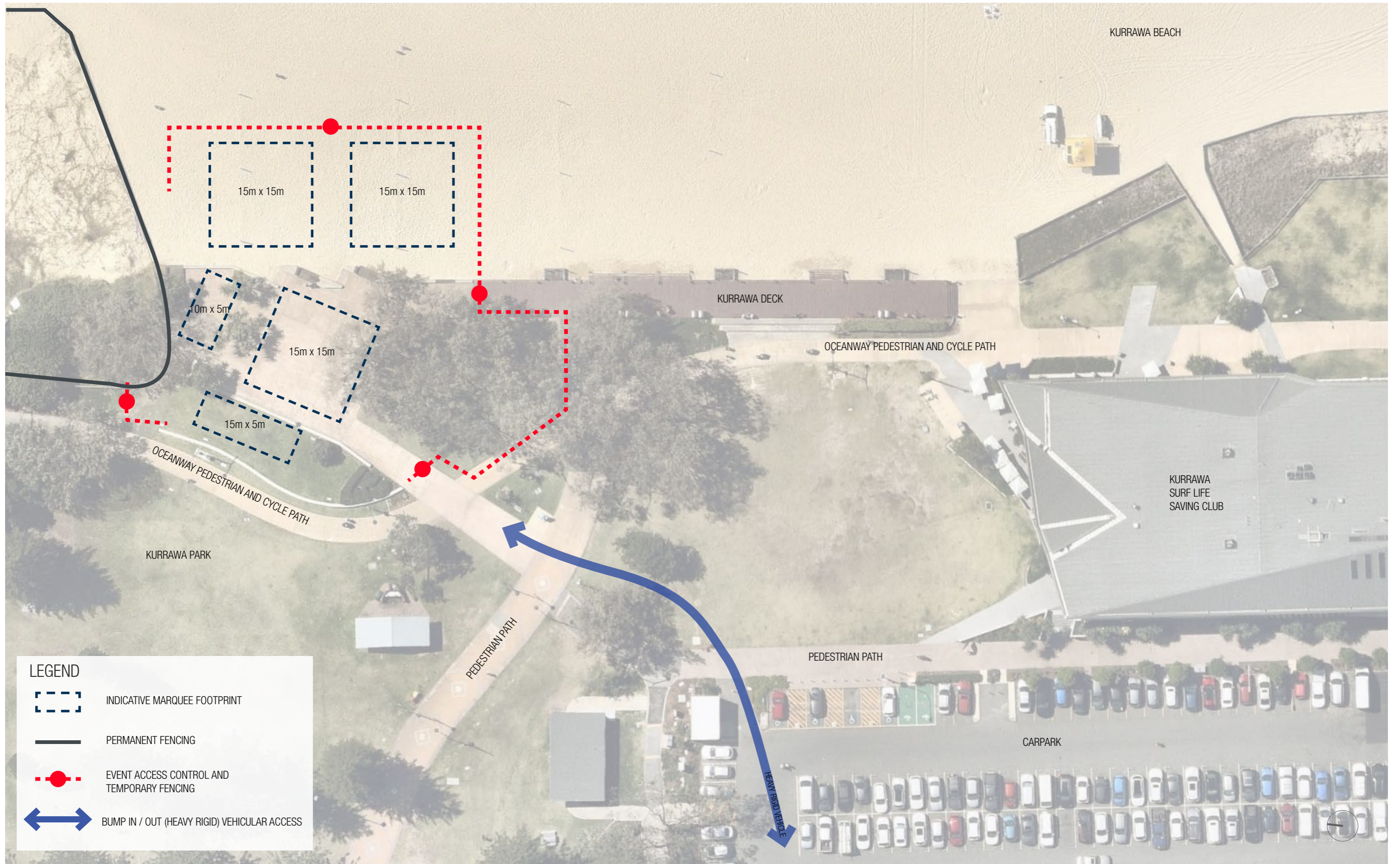




# Broadbeach Precinct Parking

Drawing No.: 009  
 Issue: A  
 Scale: Not to scale  
 Date: October 2021





**LEGEND**

- INDICATIVE MARQUEE FOOTPRINT
- PERMANENT FENCING
- EVENT ACCESS CONTROL AND TEMPORARY FENCING
- BUMP IN / OUT (HEAVY RIGID) VEHICULAR ACCESS

# Large Event Overlay Plan

Drawing No.: 010  
 Issue: A  
 Scale: 1:500@A3  
 Date: October 2021