

EVACUATION SIGN

ADVANCE GROUP OF COMPANIES
Fire Systems | Lifts | Pumps | Property
1300 116 675

EVACUATION PROCEDURES

IN CASE OF FIRE

R REMOVE PEOPLE FROM IMMEDIATE DANGER

(Do not obstruct Exits & Exit Routes)

A ALERT PEOPLE NEARBY AND RAISE AN ALARM

(DIAL 000 and ask for the Fire Brigade)

C CONFINE FIRE & SMOKE

Close doors behind you and where practicable, windows (if safe to do so)

E EVACUATE

To the ASSEMBLY AREA

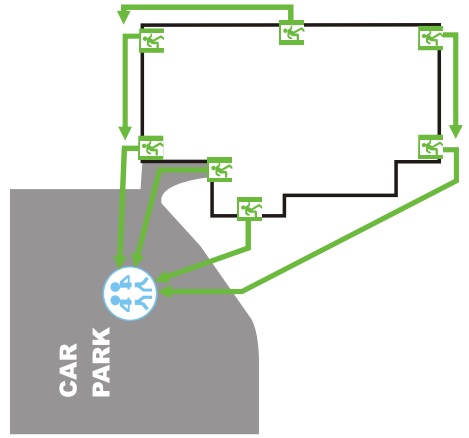
If an EVACUATION is required

- Secure your area and evacuate the building via the nearest safe exit and proceed to your external Assembly Area.
- Ensure other occupants are aware of the evacuation and assist if necessary

At the Assembly Area...

- Account for the people on your floor.
- Report any person missing to the responsible authorities

SITE PLAN / ASSEMBLY AREA

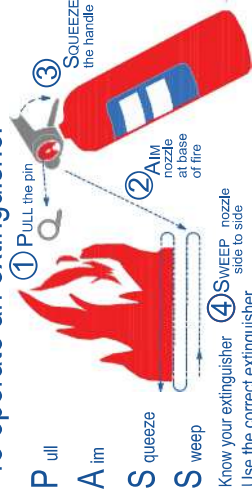


Address: Sports Drive
Location: Runaway Bay



NOTE: Fire Hose Reels are only to be used on class "A" type fires which are Wood, Paper, Textiles etc;

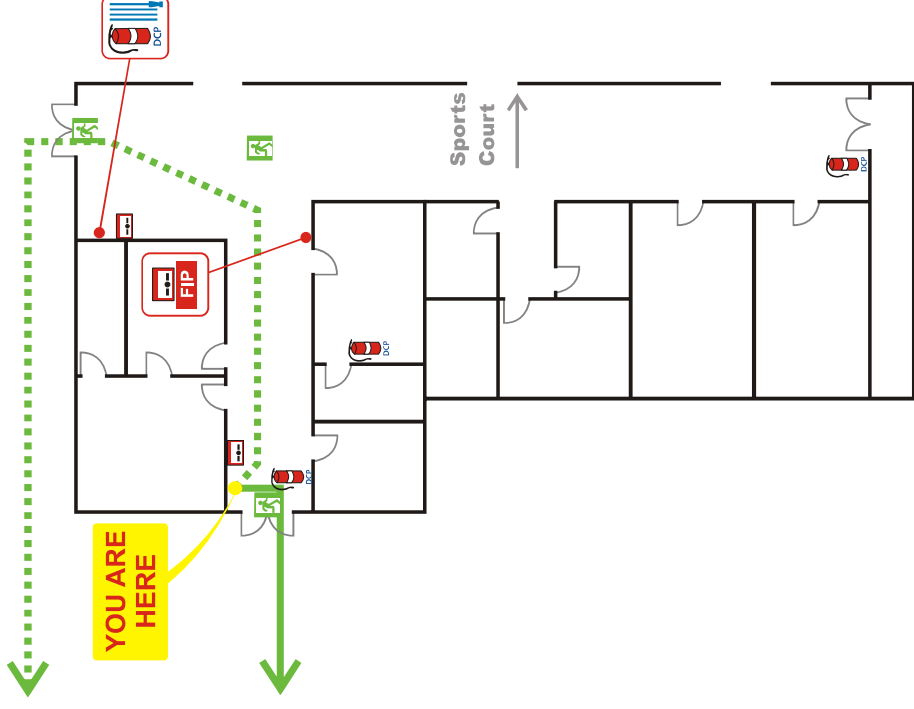
To operate an extinguisher



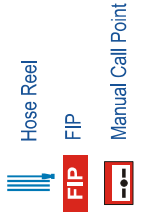
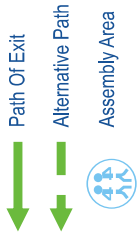
Mobility impaired persons should evacuate immediately on hearing the fire alarm assisted by a nominated person.



EVACUATION DIAGRAM



LEGEND



ADVANCE GROUP OF COMPANIES
Fire Systems | Lifts | Pumps | Property
1300 116 675

Site Name: Runaway Bay Indoor Sports
Site Address: Sports Drive, Runaway Bay
Site Owner: Gold Coast City Council
Date: 18.12.2011
Author: DL
File: Runaway Bay Indoor Sports - Evac Diagram
NOT TO SCALE