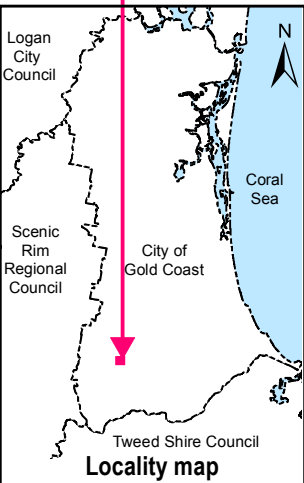
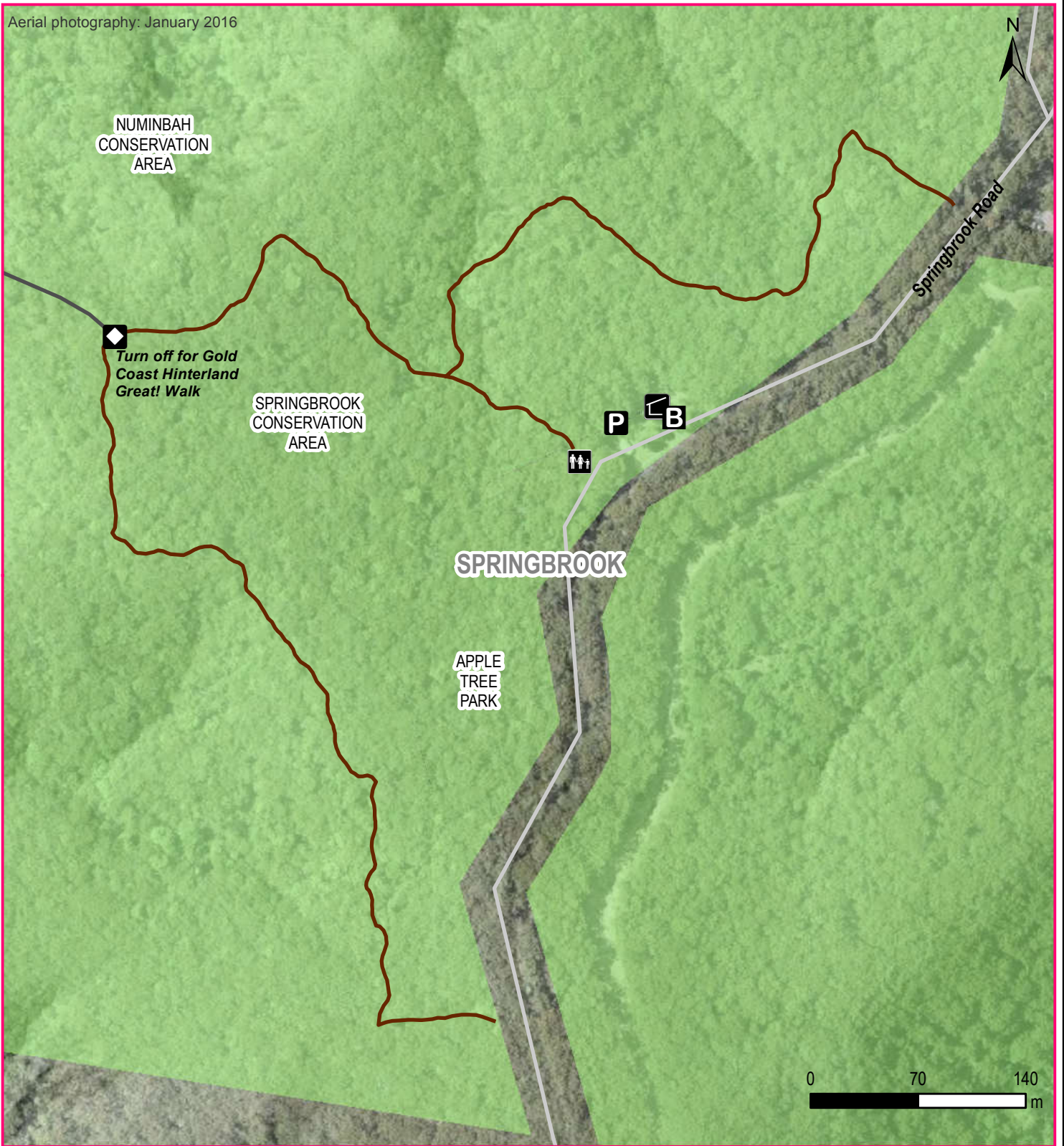


Aerial photography: January 2016



Gold Coast nature trails

Apple Tree Park trails

Apple Tree Park is great for bushwalking, picnicking and nature study. The park is located 1.8 km south of the Pine Creek Rd /Springbrook Rd intersection. These short trails are accessed easily from the carpark. Please note Springbrook Rd has no footpaths for a return loop walk. City parks are dog on leash unless otherwise indicated. For more information visit www.cityofgoldcoast.com.au/naturetrails or telephone 07 5582 8211.

Legend

- | | |
|-------------------------|-----------------------------|
| Parking available | Sheltered picnic area |
| Equitable access toilet | City recreation trail |
| Access note | State managed walking trail |
| Barbeque | City managed parks |

CITY OF
GOLD COAST

Disclaimer: © Council of the City of Gold Coast, Queensland 2016 or © State of Queensland 2016. No warranty given in relation to the data (including accuracy, reliability, completeness or suitability) and no liability accepted (including without limitation, liability in negligence) for any loss, damage or costs (including consequential damage) relating to any use of the data. Data must not be used for direct marketing or be used in breach of the privacy laws.