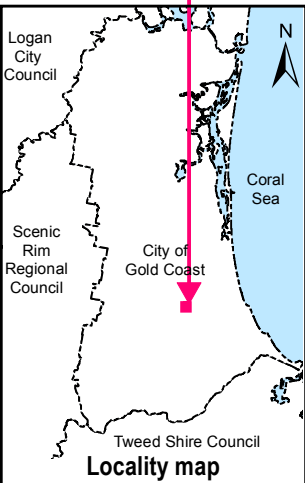
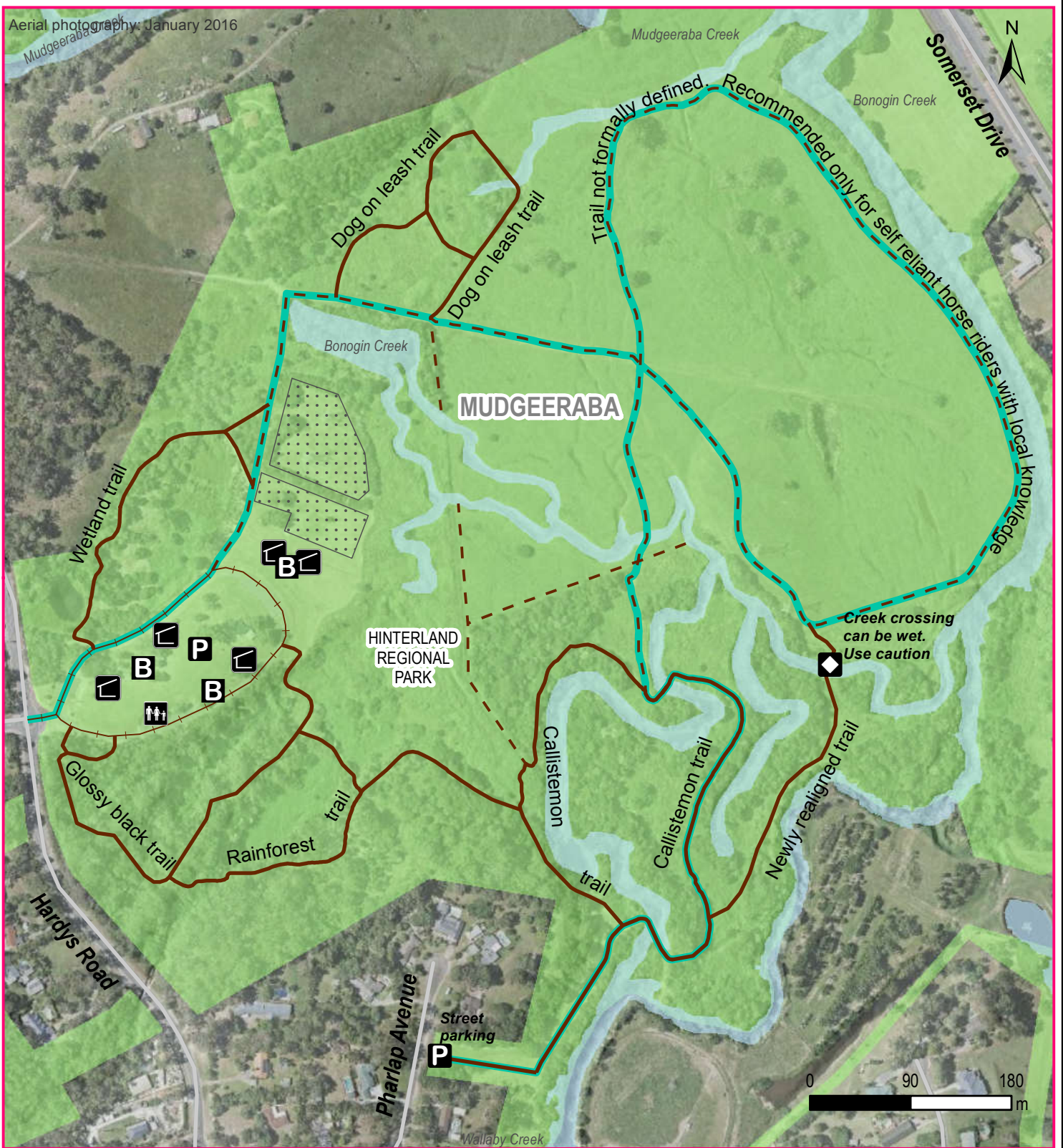


Aerial photograph: January 2016



**Gold Coast nature trails**

**Hinterland Regional Park trails**

This large flat park off Hardy's Rd in Mudgeeraba features a variety of recreational and management trails suitable for walking, nature study, running, horse riding and mountain biking. Facilities include open recreation space, equitable access toilets, barbecues, tables and picnic areas near the main entrance. The park is designated dog on leash but also has a fenced dog exercise area. For more information visit [www.cityofgoldcoast.com.au/naturetrails](http://www.cityofgoldcoast.com.au/naturetrails) or telephone 07 5582 8211.

**Legend**

- Parking available
- Sheltered picnic area
- Suggested horsingriding route
- Equitable access toilet
- City recreation trail
- Dog exercise area
- Access note
- City management trail
- City managed parks
- Barbeque
- Internal park road

**CITY OF GOLD COAST**

Disclaimer: © Council of the City of Gold Coast, Queensland 2016 or © State of Queensland 2016. No warranty given in relation to the data (including accuracy, reliability, completeness or suitability) and no liability accepted (including without limitation, liability in negligence) for any loss, damage or costs (including consequential damage) relating to any use of the data. Data must not be used for direct marketing or be used in breach of the privacy laws.