

EVACUATION SIGN & DIAGRAM

GOLD COAST SPORTS & LEISURE CENTRE
296 NERANG BROADBEACH ROAD
CARRARA 4211
QLD

LEVEL 1



IN CASE OF FIRE

FIRE / EVACUATION PROCEDURES

REMOVE PEOPLE

IF IN DANGER TO THE ASSEMBLY AREA

ALERT THE FIRE SERVICE

BUILDING OCCUPANTS AND MEMBERS OF THE PUBLIC

CONFINE FIRE & SMOKE

CLOSE ALL WINDOWS & DOORS (IF SAFE TO DO SO)

EXTINGUISH

AND CONTROL THE FIRE (IF SAFE TO DO SO)

IN CASE OF EMERGENCY

FIRE / POLICE / AMBULANCE

RING 000

FIRE EXTINGUISHER OPERATION

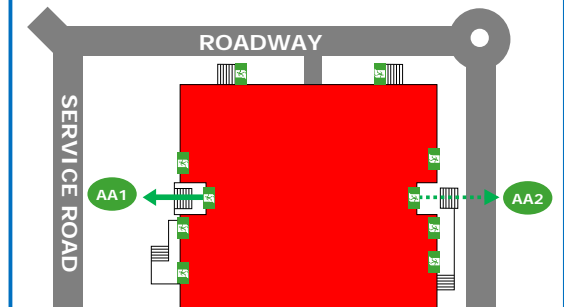
- Stay back from fire 2-3 metres
- Check pressure gauge
- Ensure door or clear exit path is directly behind you
- Use the **PASS** method
 - P** - pull pin
 - A** - aim at base of fire
 - S** - squeeze the handle trigger
 - S** - sweep the fire












EVACUATION PROCEDURE

1. Remain calm. Do not panic
2. Leave the building by designated exit or nearest safe exit
3. Proceed to the closest ASSEMBLY AREA (see SITE PLAN), or as directed by Staff / Emergency Services
4. Remain at the ASSEMBLY AREA until otherwise directed by Staff / Emergency Services

SITE PLAN



LEGEND

-  EXIT
-  EXIT ROUTE
-  ALTERNATIVE EXIT ROUTE
-  ASSEMBLY AREA
-  FIRE HOSE REEL
-  FIRE HYDRANT
-  DRY CHEMICAL EXTINGUISHER
-  WET CHEMICAL EXTINGUISHER
-  FIRE BLANKET

REMEMBER: Be aware of vehicle movement and supervise children when proceeding to the Assembly Area.