

Mudgeeraba Heritage Walk



Discover the history and heritage of
Mudgeeraba on the self-guided
Mudgeeraba Heritage Walk.

CITY OF
GOLDCOAST.

Mudgeeraba Heritage Walk

Discover the history and heritage of Mudgeeraba on the self-guided Mudgeeraba Heritage Walk.

The walk is a discovery and celebration of the rich history of this unique Gold Coast village nestled at the foothills of the Gold Coast hinterland. It recognises those places of special heritage significance to the Gold Coast that have been entered in the Gold Coast Local Heritage Register.



Original township of Mudgeeraba, circa 1910.

Image courtesy of City of Gold Coast Local Studies Library.

With the first land selections taken up in 1869 and the true village beginnings dating to 1885, Mudgeeraba is one of the earliest settlements on the Gold Coast.

Mudgeeraba grew slowly at first with the original village located just on the outskirts of the current village, where the Uniting Church now stands. In 1895, the local government, then known as the Nerang Divisional Board, moved its office to Mudgeeraba and the village took on a new role in the district.

In 1903 the railway came to Mudgeeraba. This was the catalyst to move the town centre to its present location. By 1914, Mudgeeraba was a thriving village with its own railway station, state school, the well-known Mudgeeraba Exchange Hotel and the local government office.

Today, Mudgeeraba is a unique village with its historic urban form, rich history and character. Authentic historic buildings and places of local heritage significance demonstrate the growth of a modern village.



Mudgeeraba township, circa 1910.

Image courtesy of City of Gold Coast Local Studies Library.

Along the walk you will not only discover significant heritage listed places, you will also find other places that are important in the history of Mudgeeraba. Plaques, monuments, streets, parks and community organisations all combine in Mudgeeraba to tell the story of a hinterland village shaped by agricultural beginnings, civic administration and one of the Gold Coasts most critical rail links.

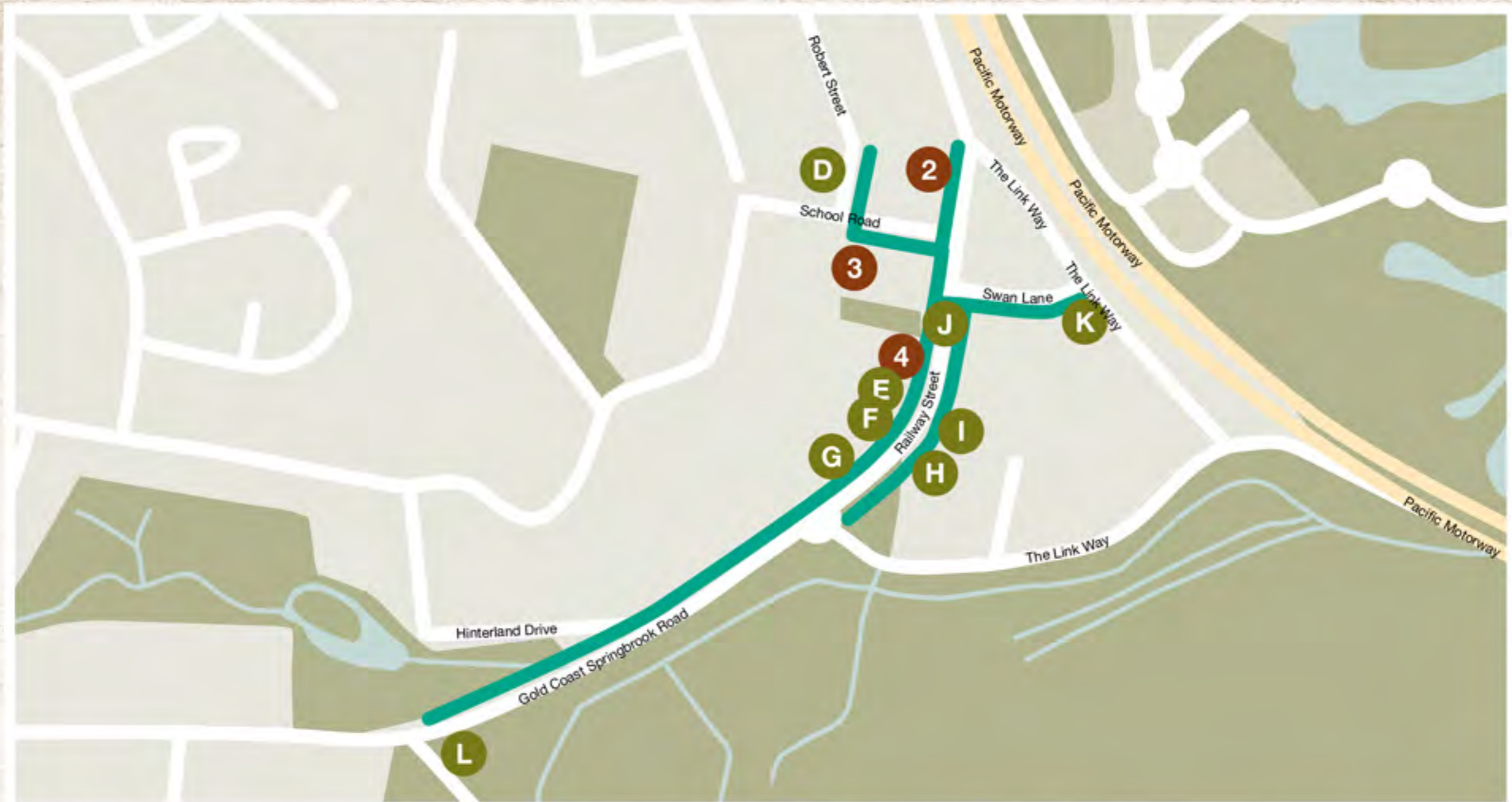
For more information about the Mudgeeraba Heritage Walk and to view the Mudgeeraba Heritage Walk book, visit heritage.goldcoast.qld.gov.au



Passengers at the Mudgeeraba train station, 1916.

Image courtesy of City of Gold Coast Local Studies Library.

Village central walk



The village central walk explores the historic homes, civic and commercial buildings at the centre of Mudgeeraba village. There are reminders of when this place was the seat of local government, an offspring of the great fig that was once a landmark at Firth Park, and the historic school building.

Mudgeeraba and Springbrook School of Arts Memorial Hall

Described in 1929 as being one of the 'finest public halls of its kind in the South Coast', the Soldier's Memorial Hall (as it was then known), was constructed in 1923.

The hall was built on land donated by local landholder Isaac Andrews and the community raised the funds to build the hall. It became a centre for community life and home to the Mudgeeraba district World War I Roll of Honour.

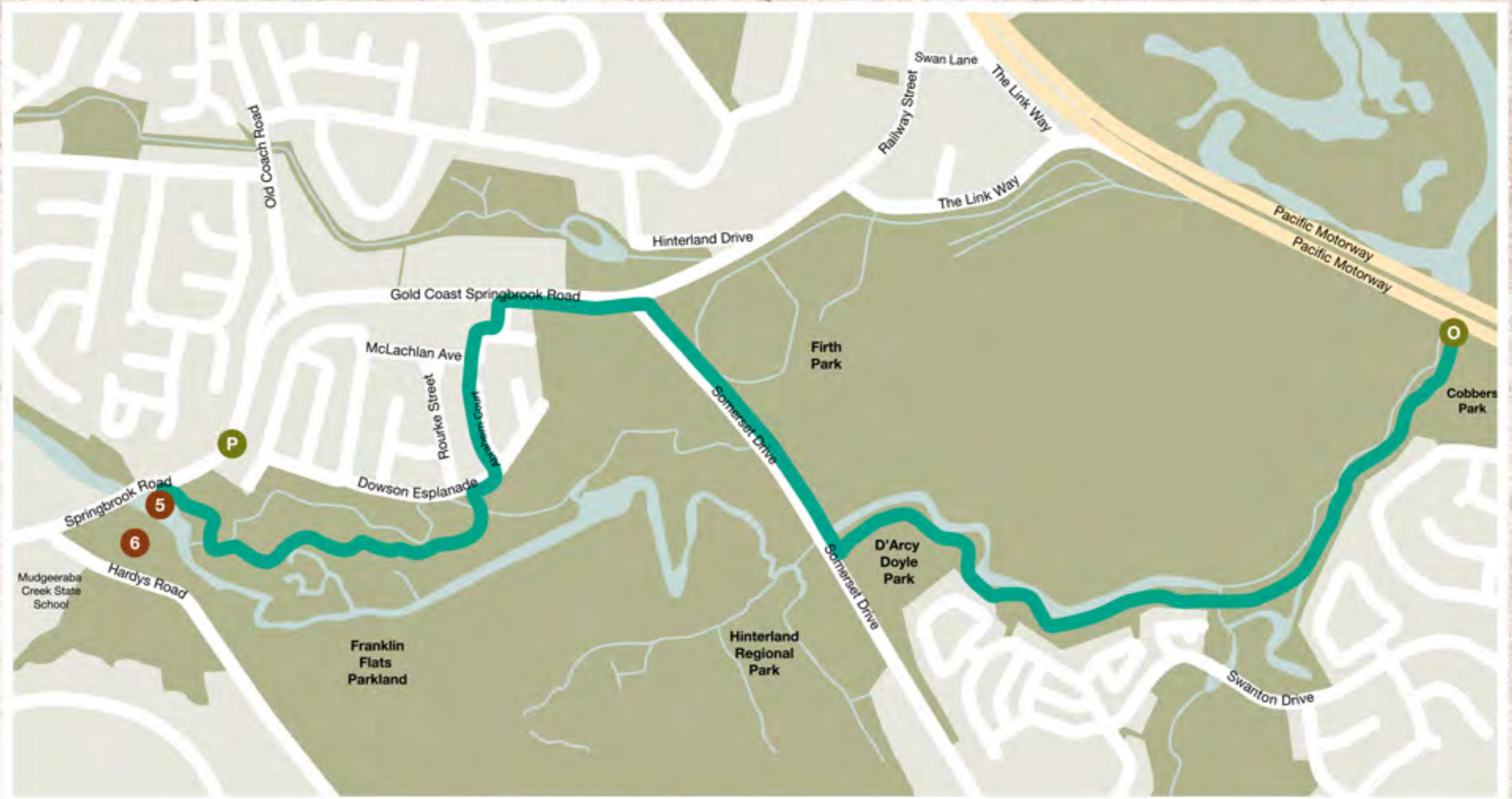
In 1993 the hall was destroyed by fire. It was rebuilt in the same year in a style reminiscent of the original hall.



Mudgeeraba and Springbrook School of Arts Memorial Hall, circa 1923. Photographer P. Wilson.

Image courtesy of City of Gold Coast Local Studies Library.

Road to rail walk



From historic Springbrook Road to the South Coast Railway Bridge #9 remnants, this walk explores some of the important historic transport infrastructure that helped shape Mudgeeraba and the wider district. This walk also includes Laver Park where you can see persimmon trees planted in 1923.

The South Coast Railway Line

The Nerang to Tweed Heads section of the South Coast Railway line was opened in 1903.

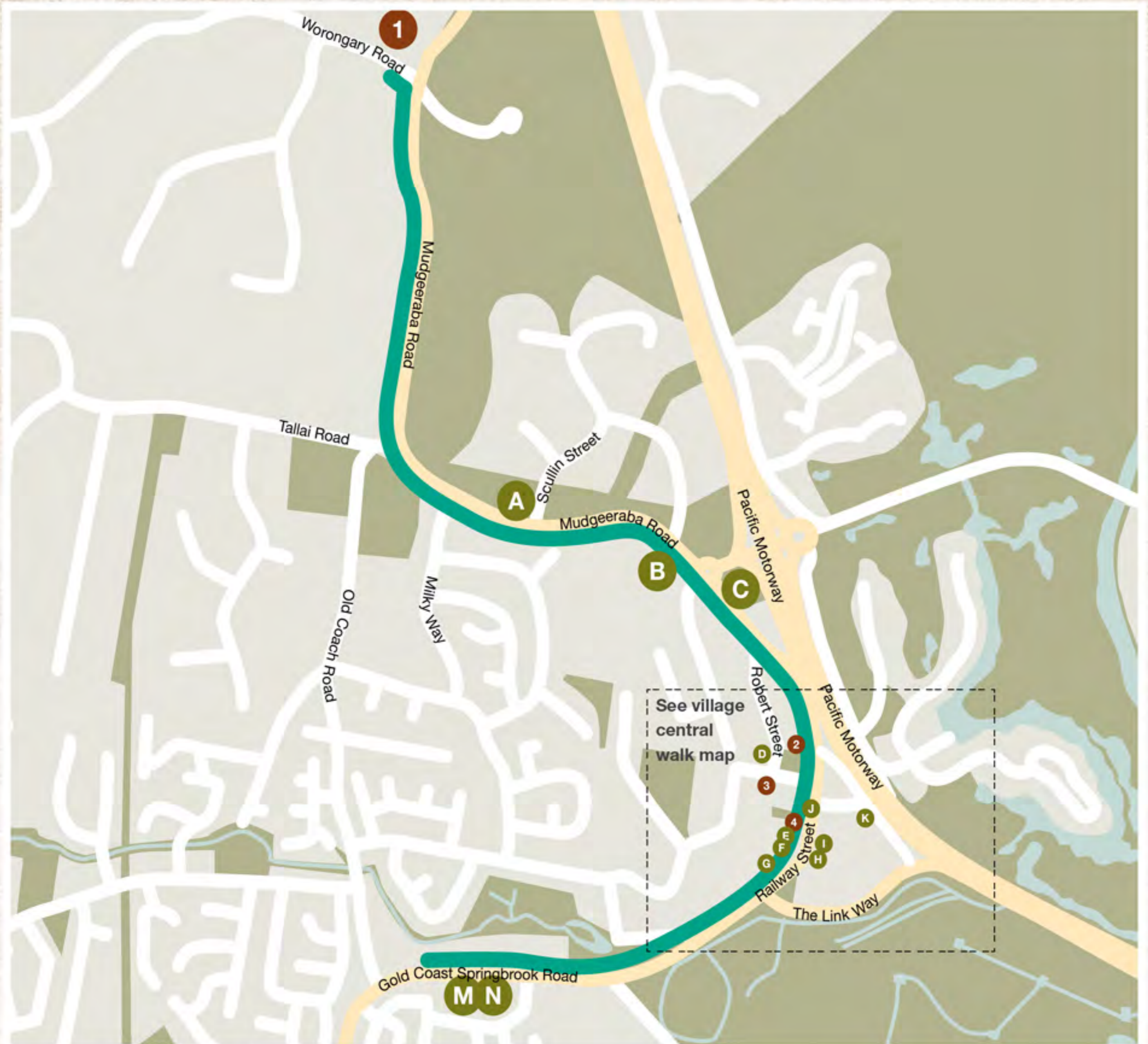
At the time, the railway was a modern transport system critical for local residents. Mudgeeraba had its own station building overseen by a succession of station mistresses.

Rail transport dominated up to the 1940s but the rise in popularity of motor transport eventually led to the closure of the line. The remnants of Bridge #9 in Mudgeeraba Creek are a reminder of the rail route that once ran through the village.



Train passing through Mudgeeraba via Bridge #9, date unknown. Image courtesy of City of Gold Coast Local Studies Library.

Museum tour walk



From historic Schmidt farmhouse to the Mudgeeraba Uniting Church, this walk will visit two local heritage museums, the Mudgeeraba War Memorial, historic Railway Street, the 1917 Commercial Bank of Australia building and the 1890 Uniting Church. This walk provides an opportunity to experience almost every part of Mudgeeraba's heritage.

The Uniting Church

William Laver donated a parcel of land in 1890 on which to construct a suitable church building. The building of the Presbyterian Church was completed later that year having been financed entirely by community donations.

In 1892, for want of a local school, the Mudgeeraba Lower Provisional School began to operate from the church building during the week. This arrangement continued until 1914.

By 1977, the Presbyterian Church had joined with the Methodist Church and the Congregational Union of Australia to form the Uniting Church. While a modern church building has been added to the site, the small timber church still stands, now a place for quiet reflection and prayer.



Mudgeeraba Presbyterian Church, circa 1930.

Image courtesy of City of Gold Coast Local Studies Library.

Gold Coast Local Heritage Register places

- | | |
|--|--|
| <p>1 Schmidt farmhouse and outbuildings, Mudgeeraba Light Horse Museum</p> <p>2 Wallaby Hotel</p> <p>3 Mudgeeraba State School (former)</p> | <p>4 Mudgeeraba Post Office and Nerang Shire Council Chambers (former)</p> <p>5 Dip Crossing Bridge and road remnants</p> <p>6 Persimmon Trees, Laver Family Park</p> |
|--|--|

Places of interest

- | | |
|--|---|
| <p>A Gold Coast Hinterland Heritage Museum Inc</p> <p>B Mudgeeraba Cemetery</p> <p>C Mudgeeraba War Memorial, Elsie Laver Park</p> <p>D Mudgeeraba Bakery</p> <p>E Starkey's house</p> <p>F Sprenger's house</p> <p>G Andrews' house</p> <p>H Woodchoppers Inn</p> | <p>I Mudgeeraba and Springbrook School of Arts Memorial Hall</p> <p>J The Village Green</p> <p>K Mudgeeraba Railway Monument, Gloria Schirrel Park</p> <p>L The Fig Tree, Firth Park</p> <p>M Mudgeeraba Uniting Church</p> <p>N Commercial Bank of Australia</p> <p>O South Coast Railway Bridge #9 remnants</p> <p>P Springbrook Road</p> |
|--|---|

FRONT PAGE: Sehmish's bullock teams hauling logs through Mudgeeraba village, circa 1920. Image courtesy of City of Gold Coast Local Studies Library.

For more information

P 1300 GOLDCOAST (1300 465 326)

E mail@goldcoast.qld.gov.au

W cityofgoldcoast.com.au

CITY OF
GOLDCOAST.[™]