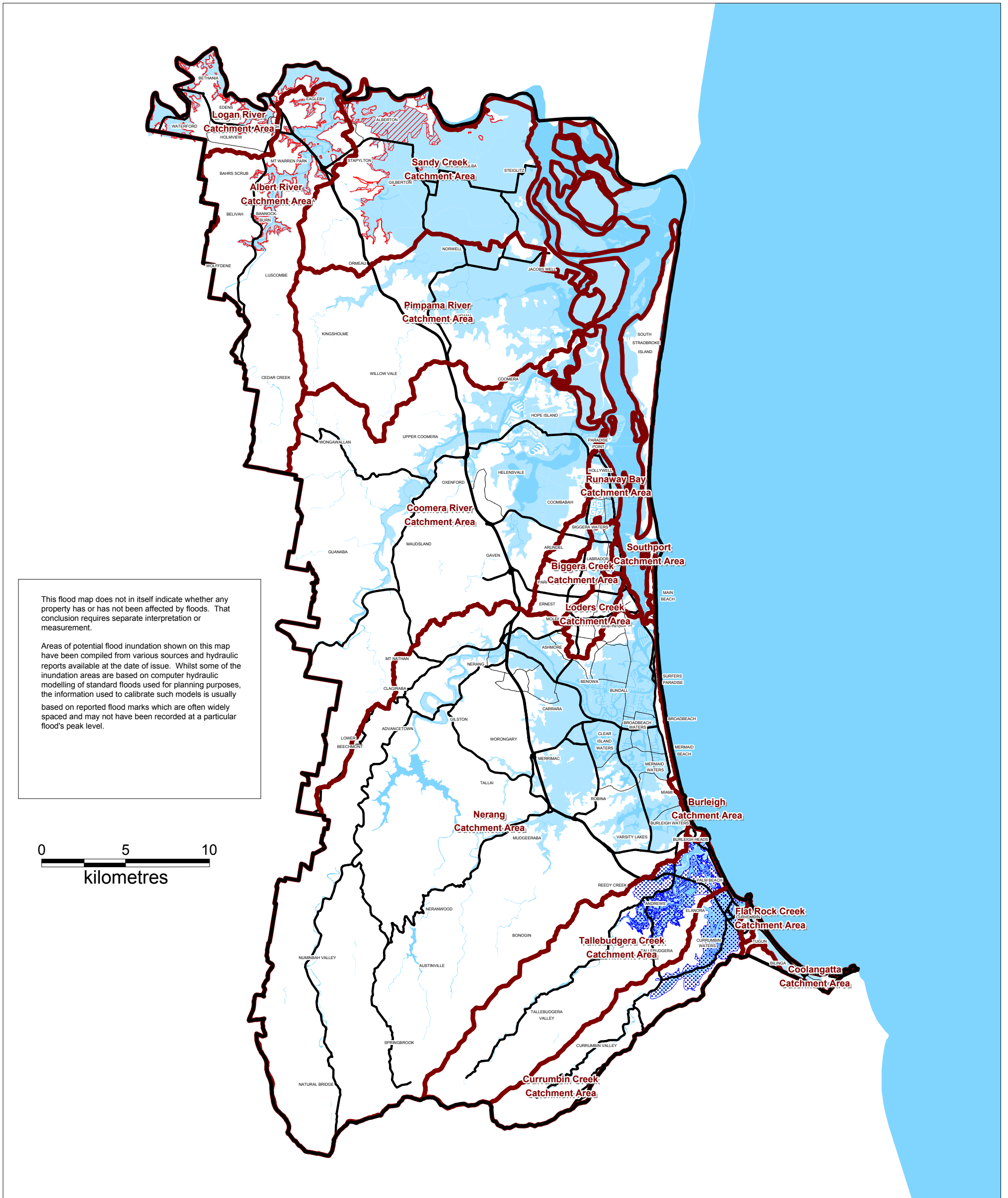
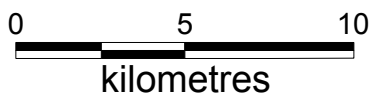


Potential Flood Inundation Overlay Map - OM17 (Ver. 1.0)



This flood map does not in itself indicate whether any property has or has not been affected by floods. That conclusion requires separate interpretation or measurement.

Areas of potential flood inundation shown on this map have been compiled from various sources and hydraulic reports available at the date of issue. Whilst some of the inundation areas are based on computer hydraulic modelling of standard floods used for planning purposes, the information used to calibrate such models is usually based on reported flood marks which are often widely spaced and may not have been recorded at a particular flood's peak level.



Legend

	PROPOSED ENCROACHMENT FILLING (SOUTHROC)		WATERWAY
	SUSPECTED FLOOD PRONE AREA		AREAS NOT AFFECTED BY INUNDATION
	INDICATED FLOOD PRONE AREA		CATCHMENT AREA



© Gold Coast City Council 2003
Based on Cadastral Data provided with the permission of the Department of Natural Resources and Mines (current as at February 2003). While every care is taken to ensure the accuracy of this data, the Gold Coast City Council makes no representations or warranties about its accuracy, reliability, completeness or suitability for any particular purpose and disclaims all responsibility and all liability (including without limitation, liability in negligence) for all expenses, losses, damages (including indirect or consequential damage) and costs which you might incur as a result of the data being inaccurate or incomplete in any way and for any reason.

© The State of Queensland (Department of Natural Resources and Mines) 2003
While every care is taken to ensure the accuracy of this data, the Department of Natural Resources makes no representations or warranties about its accuracy, reliability, completeness or suitability for any particular purpose and disclaims all responsibility and all liability (including without limitation, liability in negligence) for all expenses, losses, damages (including indirect or consequential damage) and costs which you might incur as a result of the data being inaccurate or incomplete in any way and for any reason.

