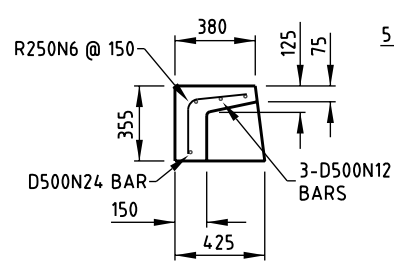
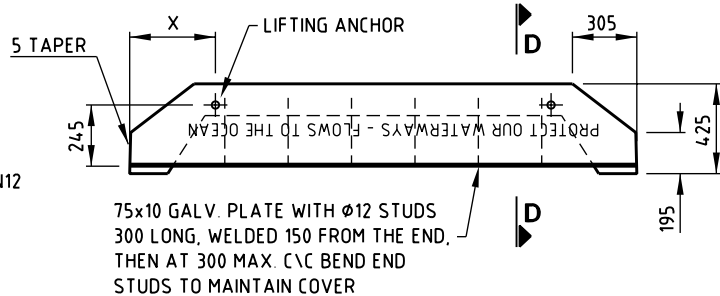


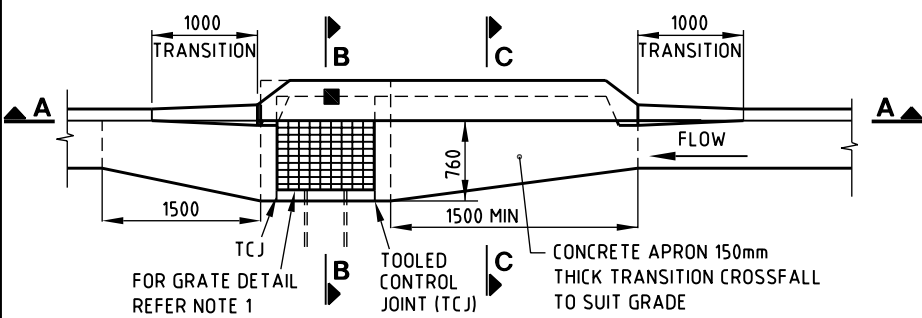
SECTION A-A



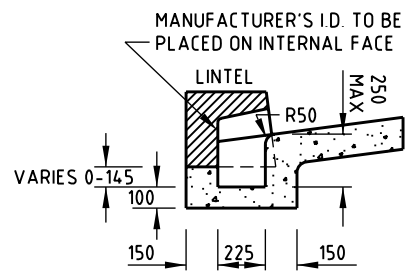
SECTION D-D



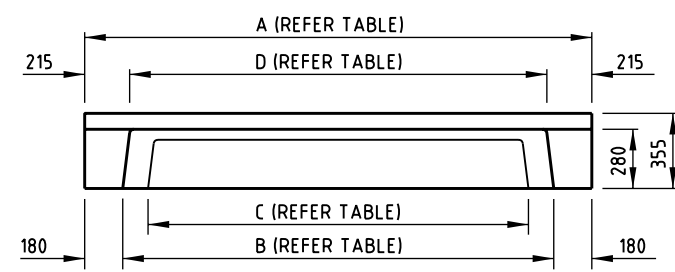
PLAN



TYPICAL INLET ON GRADE (TYPE KG)



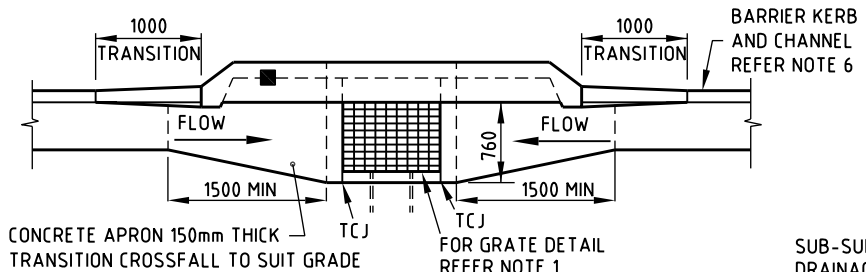
SECTION C-C



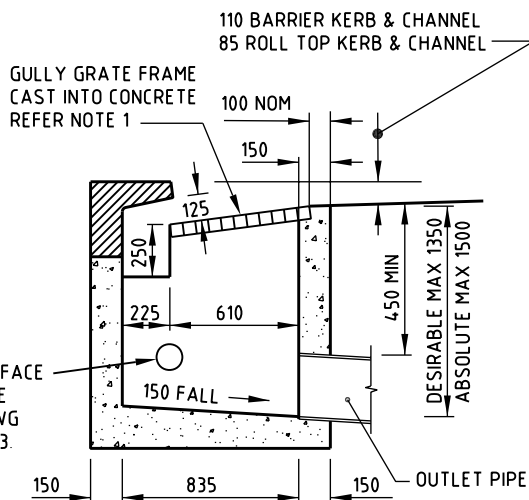
ELEVATION

TYPE	DIMENSION				
	A	B	C	D	X
SMALL (S)	2400	2040	1800	1970	400
MEDIUM (M)	3600	3240	3000	3170	690
LARGE (L)	4800	4440	4200	4370	1000

LINTEL TABLE



TYPICAL INLET IN SAG (TYPE KS)



SECTION B-B

LINTEL NOTE
 PROTECT OUR WATERWAYS - FLOWS TO THE OCEAN
 TEXT 40 HIGH - LETTERS IMPRINTED 5 INTO CONCRETE
 FACING FOOTPATH

NOTES

1. THE GULLY GRATE SHOWN IS TYPICAL ONLY. GRATES ARE TO COMPLY WITH COUNCIL'S STANDARD SPECIFICATION S55.
2. CONCRETE IN PRECAST LINTELS TO BE GRADE N32.
3. CAST IN-SITU CONCRETE TO BE GRADE N25.
4. REINFORCING BARS TO AS/NZS 4671:2001 PLACED CENTRALLY, 40 MIN. END COVER.
5. LIFTING ANCHORS TO BE "SWIFTLIFT" OR EQUIVALENT 1.3 TONNE GALVANISED TO AS/NZS 4680 AND FITTED TO MANUFACTURERS SPECIFICATION.
6. KERB AND CHANNEL PROFILES SHOWN ARE TYPICAL ONLY. FOR ACTUAL PROFILES REFER G.C.C.C. STD. DWG. 05-02-102.
7. FOR DETAILS ON SUB-SURFACE DRAINAGE CONNECTIONS REFER G.C.C.C. STD. DWG. No. 05-02-103.
8. DIMENSIONS ARE IN MILLIMETRES UNLESS SHOWN OTHERWISE.

Gold Coast City Council
 GOLD COAST CITY COUNCIL
 PO BOX 5042
 GOLD COAST MC 9729

THIS DRAWING IS NOT TO BE AMENDED WITHOUT REFERENCE TO STANDARDS COMMITTEE				CONTROLLED DOCUMENT	DO NOT SCALE TAKE FIGURED DIMENSIONS ONLY
No.	AMENDMENT	APPROVED	DATE	ISSUED	

DRAWN BY	TECHNICAL SERVICES BRANCH
PASSED	18/03/04
APPROVED	18/03/04

STANDARD DRAWING

**SIDE INLET GULLY
 CAST IN-SITU DETAILS
 KERB IN LINE**

MICROFILMED
STANDARD DRAWING No. 05-03-002
ISSUE 2005 EDITION