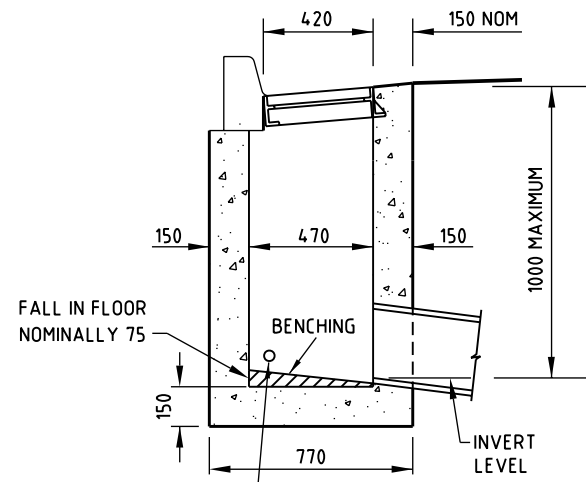
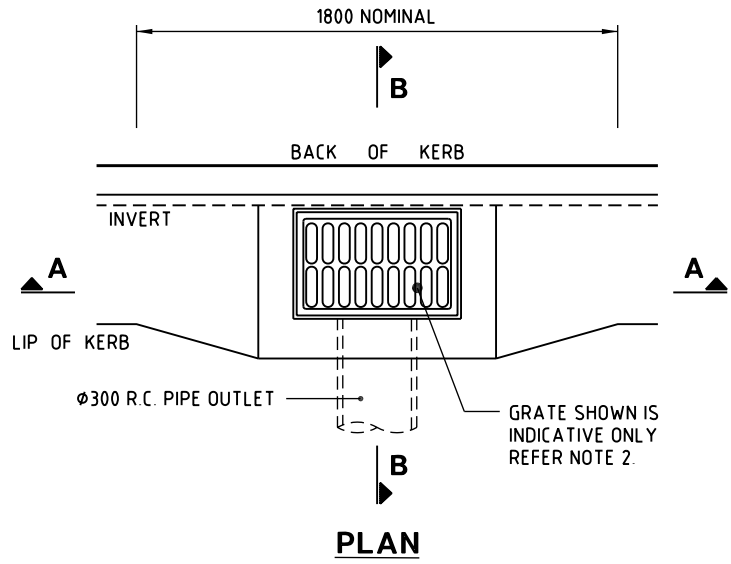


SECTION A-A



SECTION B-B



PLAN

NOTES:

1. THE USE OF ANTI-PONDING GULLY PITS SHOULD BE AVOIDED WHEREVER POSSIBLE.
2. THE GULLY GRATE SHOWN IS INDICATIVE ONLY. GRATES SHALL COMPLY WITH COUNCILS STANDARD SPECIFICATION SS5.
3. CONCRETE TO BE GRADE N25.
4. KERB LEVELS SHALL BE AS PER GRADING ON LONGITUDINAL SECTION OR TURNOUT DETAILS.
5. PIPE INVERT LEVELS AS PER DRAINAGE DETAILS.
6. ADDITIONAL SEEPAGE DRAIN INLETS TO BE PROVIDED IN WATER CHARGED GROUND AS DIRECTED BY THE COUNCIL'S REPRESENTATIVE.
7. DIMENSIONS ARE IN MILLIMETRES UNLESS SHOWN OTHERWISE.



THIS DRAWING IS NOT TO BE AMENDED WITHOUT REFERENCE TO STANDARDS COMMITTEE				CONTROLLED DOCUMENT
No.	AMENDMENT	APPROVED	DATE	ISSUED

DO NOT SCALE TAKE FIGURED DIMENSIONS ONLY	
DRAWN BY	TECHNICAL SERVICES BRANCH
PASSED	18/03/04
APPROVED	18/03/04

STANDARD DRAWING

**ANTI-PONDING GULLY
BARRIER KERB
KERB IN LINE**

MICROFILMED
STANDARD DRAWING No. 05-03-006
ISSUE 2005 EDITION