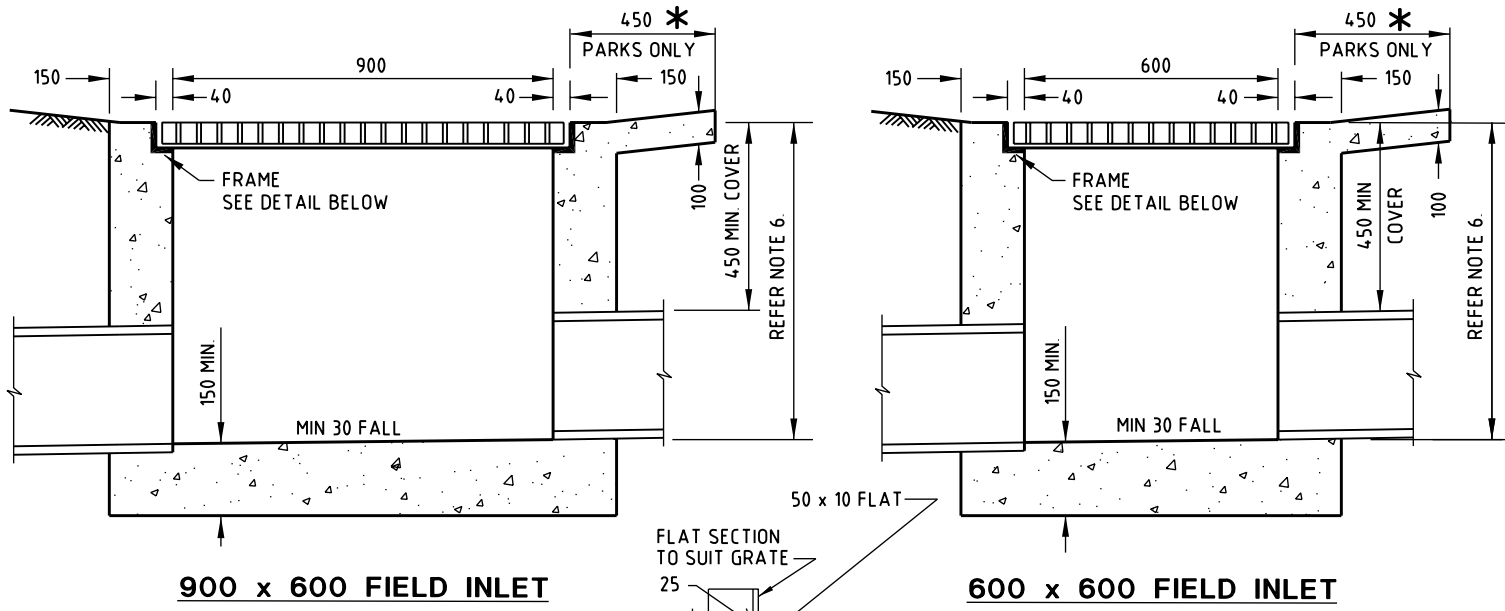
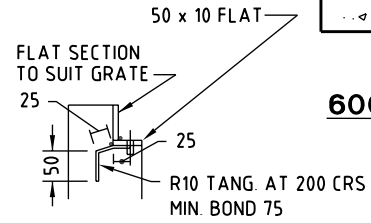


**GENERAL FIELD INLET PIT LOCATION DETAIL**



\* A 450 WIDE CONCRETE APRON SURROUND SHALL BE PROVIDED WHERE FIELD INLETS ARE LOCATED IN G.C.C.C. PARKS.



**FRAME DETAIL**

- NOTES:**
1. ALL M.S. FRAMES AND SECTIONS TO BE HOT DIPPED GALVANISED TO AS/NZS 4680 AFTER FABRICATION.
  2. THE GULLY GRATE AND FRAME SHOWN ARE INDICATIVE ONLY. GRATES AND FRAMES ARE TO COMPLY WITH COUNCIL'S STANDARD SPECIFICATION SS5.
  3. BICYCLE SAFE GRATES ARE TO BE PROVIDED IN ALL AREAS SUBJECT TO BICYCLE OR PEDESTRIAN TRAFFIC.
  4. CONCRETE TO BE GRADE N25.
  5. ALL GRATES TO BE BOLTED DOWN.
  6. PIT SIZE AND DEPTH REQUIREMENTS ARE:
    - 0-1m DEPTH = 600 x 600 INLET
    - 1-1.5m DEPTH = 900 x 600 INLET
    - 1.5m OR GREATER = STD. MANHOLE WITH 600 x 600 NOMINAL GRATE SET INTO AN APPROVED ROOF SLAB.
  7. PIPE INVERT LEVELS AS PER DRAINAGE DETAILS
  8. DIMENSIONS ARE IN MILLIMETRES UNLESS SHOWN OTHERWISE.



THIS DRAWING IS NOT TO BE AMENDED WITHOUT REFERENCE TO STANDARDS COMMITTEE				CONTROLLED DOCUMENT
No.	AMENDMENT	APPROVED	DATE	ISSUED

DO NOT SCALE TAKE FIGURED DIMENSIONS ONLY	
DRAWN BY	TECHNICAL SERVICES BRANCH
PASSED	18/03/04
APPROVED	18/03/04

STANDARD DRAWING	
FIELD INLET AND INTER-ALLOTMENT DRAINAGE PIT	

MICROFILMED
STANDARD DRAWING No. <b>05-03-008</b>
ISSUE 2005 EDITION