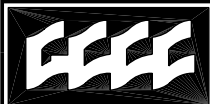
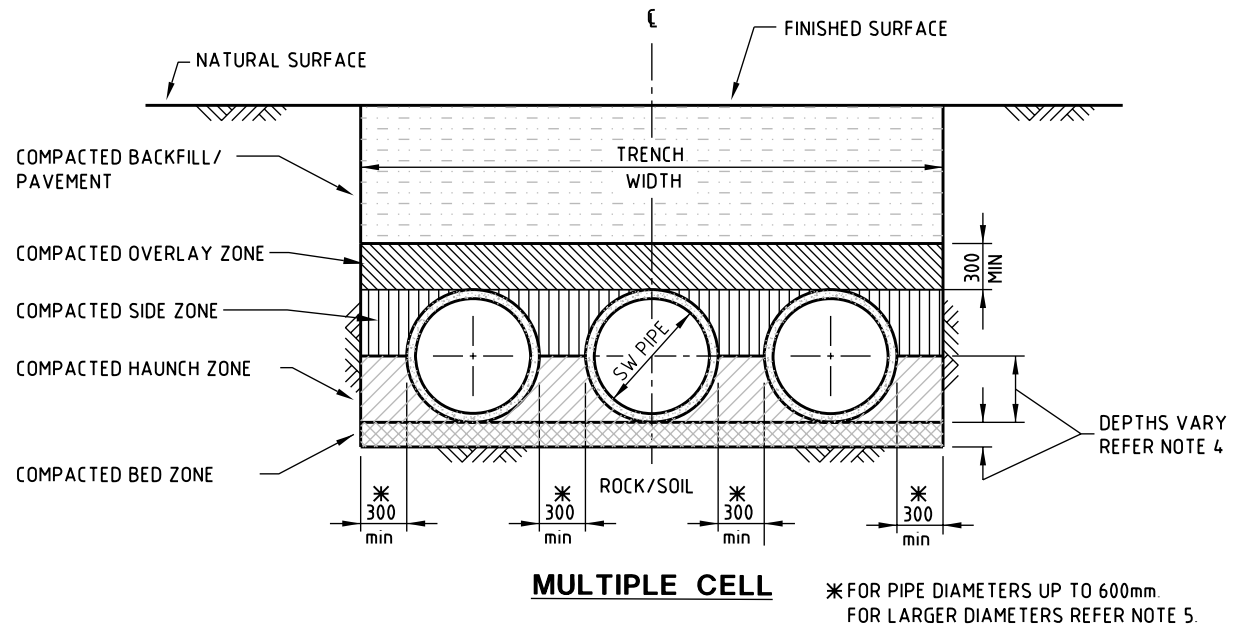
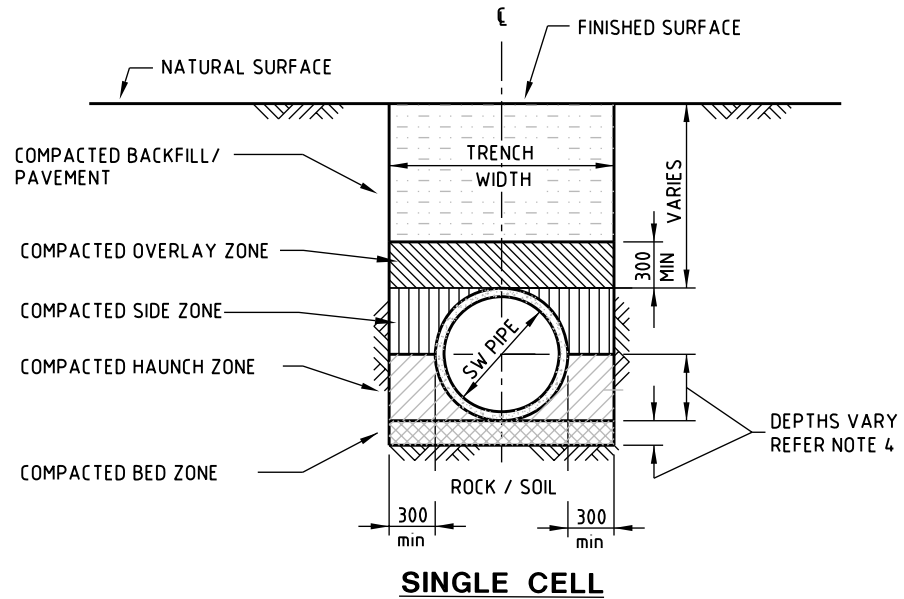


NOTES:

1. REFER TO STANDARD SPECIFICATION SS5 FOR GRADING, COMPACTION AND SPECIFICATION FOR BACKFILL, OVERLAY ZONE, HAUNCH ZONE AND BED ZONE MATERIALS.
2. ALL MATERIAL IN THE ABOVE ZONES TO BE COMPACTED OVER THE FULL WIDTH OF THE TRENCH.
3. IN AREAS OF POOR GROUND CONDITIONS OR HIGH WATER TABLES ALTERNATIVE BEDDING REQUIREMENTS MAY BE REQUIRED AS DIRECTED BY THE SUPERINTENDENT.
4. FOR TRENCH WIDTH, BED AND HAUNCH ZONE DEPTHS, REFER TO A.S. 3725. PIPES ARE TO BE DESIGNED AND INSTALLED TO THE REQUIREMENTS OF AS 3725 WITH RESPECT TO THEIR STRENGTH CLASS FOR ALL CONSTRUCTION LOADS, DEAD LOADS AND IN SERVICE LOADS.
5. FOR SPACING OF MULTIPLE CELL PIPES GREATER THAN 600mm DIA REFER QUEENSLAND MAIN ROADS DEPARTMENT - ROAD DRAINAGE DESIGN MANUAL
6. DIMENSIONS ARE IN MILLIMETRES UNLESS SHOWN OTHERWISE.

TABLE OF BEDDING AND HAUNCH MATERIAL DETAILS

A.S. SIEVE (mm)	PERCENTAGE PASSING BY WEIGHT		
	CRUSHED ROCK NOM SIZE 10.0mm (STANDARD BEDDING)	CRUSHED ROCK NOM SIZE 20.0mm (ADDITIONAL BEDDING)	CRUSHED ROCK NOM SIZE 30.0mm (ADDITIONAL BEDDING)
37.5	-	-	100
26.5	-	100	80-100
19.0	100	90-100	70-90
13.2	80-100	50-80	60-80
9.5	30-45	30-40	50-70
6.7	-	0-5	
4.75	15-25		
2.36	2-8		



Gold Coast City Council
GOLD COAST CITY COUNCIL
PO BOX 5042
GOLD COAST MC 9729

THIS DRAWING IS NOT TO BE AMENDED WITHOUT REFERENCE TO STANDARDS COMMITTEE				
No.	AMENDMENT	APPROVED	DATE	ISSUED

CONTROLLED DOCUMENT	DO NOT SCALE TAKE FIGURED DIMENSIONS ONLY
DRAWN BY	TECHNICAL SERVICES BRANCH
PASSED	18/03/04
APPROVED	18/03/04

STANDARD DRAWING
EXCAVATION & BEDDING OF CONCRETE STORMWATER PIPES

MICROFILMED
STANDARD DRAWING No. 05-03-201
ISSUE 2005 EDITION