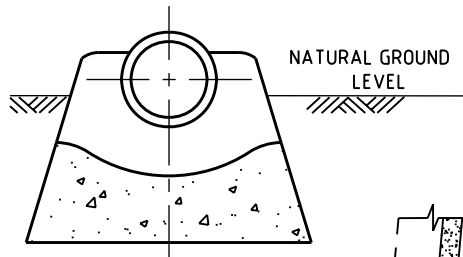
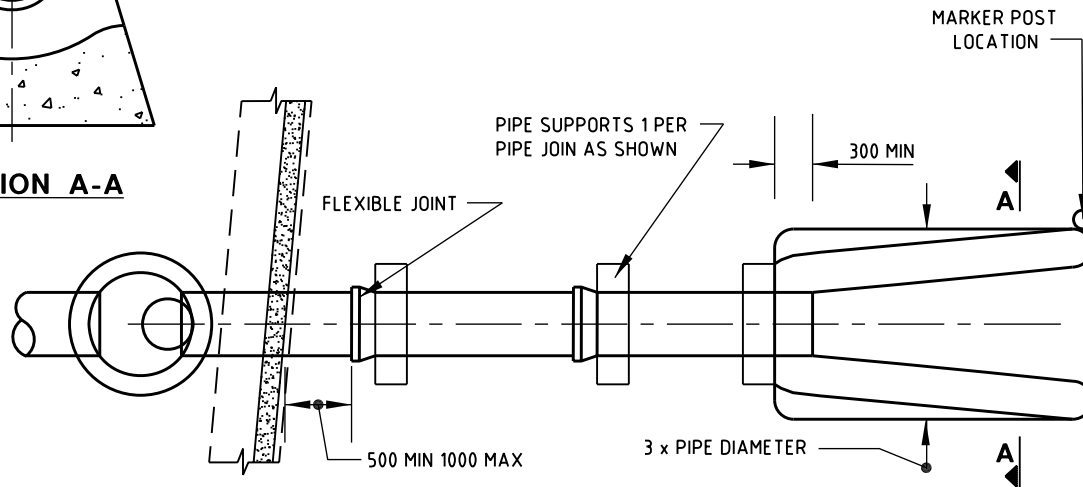


ELEVATION



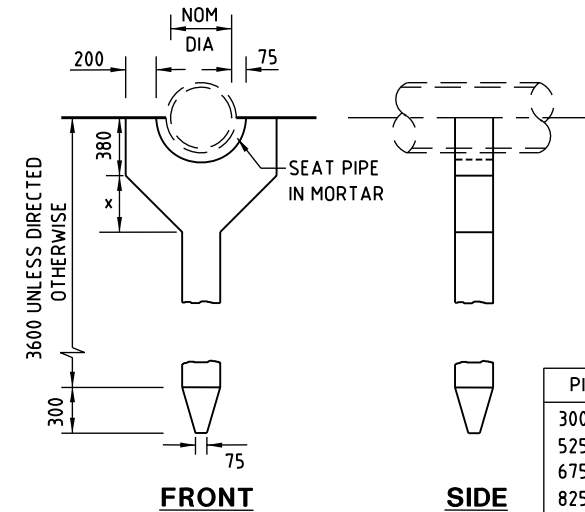
SECTION A-A



PLAN

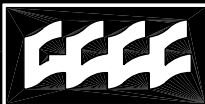
NOTES:

1. PIPE DETAILS ARE AS FOLLOWS:
 - (a) 375 TO 750 DIA. - FRCP CLASS 2 'SUPERTITE' JOINTS
 - (b) GREATER THAN 750 DIA. - RCP CLASS 2. RRJ & SWC H.D.P.E. MAY BE SUBSTITUTED AS DIRECTED BY THE SUPERINTENDENT
2. TO MINIMISE VISUAL IMPACT THE PIPE GRADING IS TO FOLLOW THE FINAL BEACH PROFILE
3. MARKER POST TO COMPLY WITH THE FOLLOWING:
 - (a) MINIMUM $\phi 150$ UPVC PIPE INFILLED WITH CONCRETE
 - (b) PAINTED APPROVED YELLOW
 - (c) EXTEND 1.0m ABOVE MEAN HIGH WATER LEVEL (MHW)
 - (d) A BAND OF APPROVED YELLOW REFLECTIVE TAPE TO BE PLACED AROUND EXPOSED TOP OF PIPE (NOMINAL 25 WIDTH)
4. MINIMUM COVER TO REINFORCEMENT TO BE 50
5. ALL CONCRETE TO BE GRADE S40 FIBREMESH, (POLYPROPYLENE FIBRES TO BE ADDED) AT NOT LESS THAN 0.90kg/m^3
6. ALL CONCRETE EDGES TO HAVE MIN 25 RADIUS, NO SQUARE EDGES PERMITTED.
7. PIER/CRADLE TO BE DESIGNED AND APPROVED BY COUNCIL.
8. DIMENSIONS IN MILLIMETRES UNLESS OTHERWISE SHOWN



PIER/CRADLE ELEVATIONS INDICATIVE ONLY

PIPE ϕ	x
300-450	350
525-600	400
675-750	500
825-900	600



Gold Coast City Council

GOLD COAST CITY COUNCIL
PO BOX 5042
GOLD COAST MC 9729

THIS DRAWING IS NOT TO BE AMENDED WITHOUT REFERENCE TO STANDARDS COMMITTEE				CONTROLLED DOCUMENT	DO NOT SCALE TAKE FIGURED DIMENSIONS ONLY
No.	AMENDMENT	APPROVED	DATE	ISSUED	

DRAWN BY TECHNICAL SERVICES BRANCH	
PASSED	18/03/04
APPROVED	18/03/04

STANDARD DRAWING

**STORMWATER OUTLET
BEACH PROFILE - NEW WORKS**

MICROFILMED
STANDARD DRAWING No. 05-03-204
ISSUE 2005 EDITION