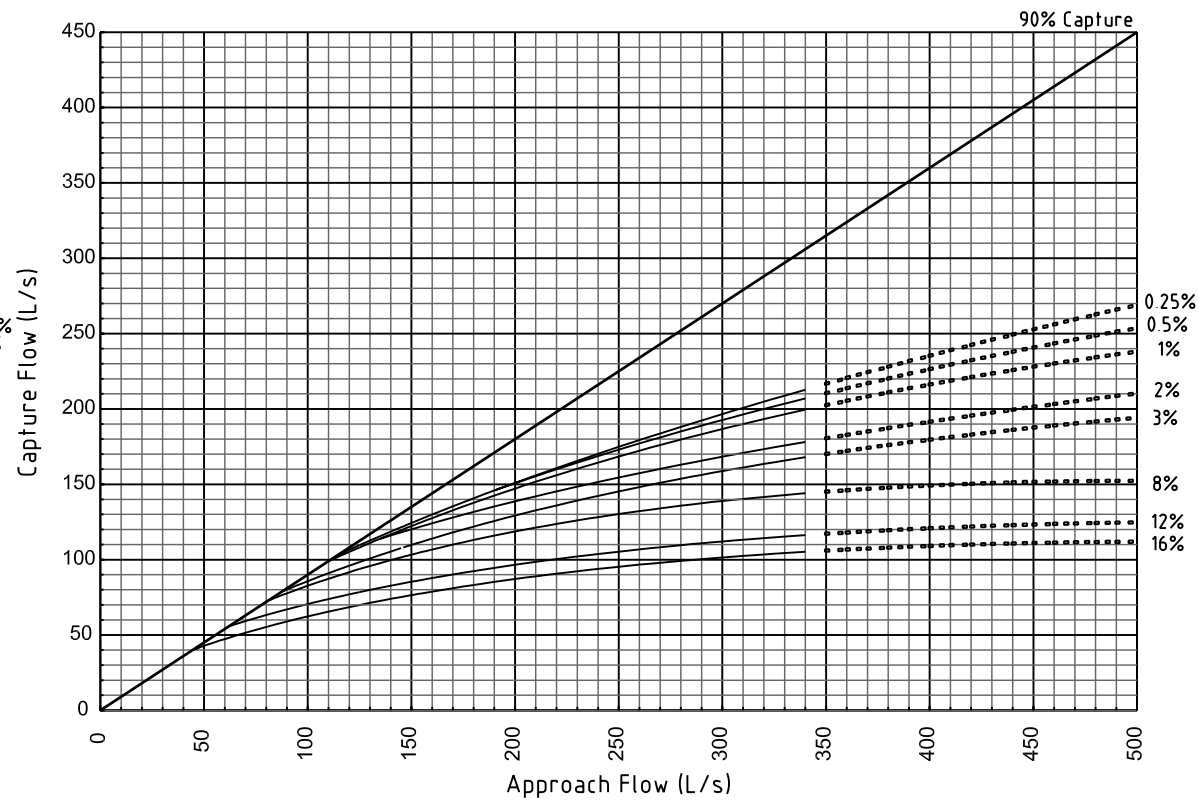
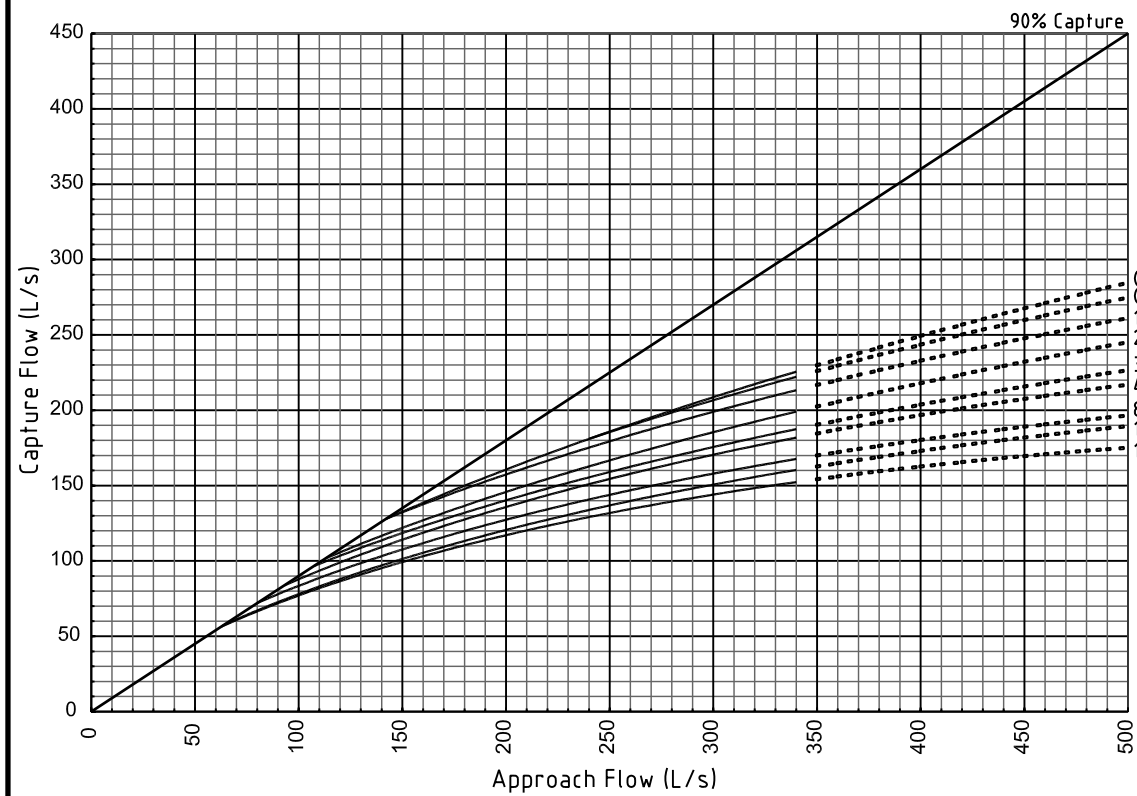


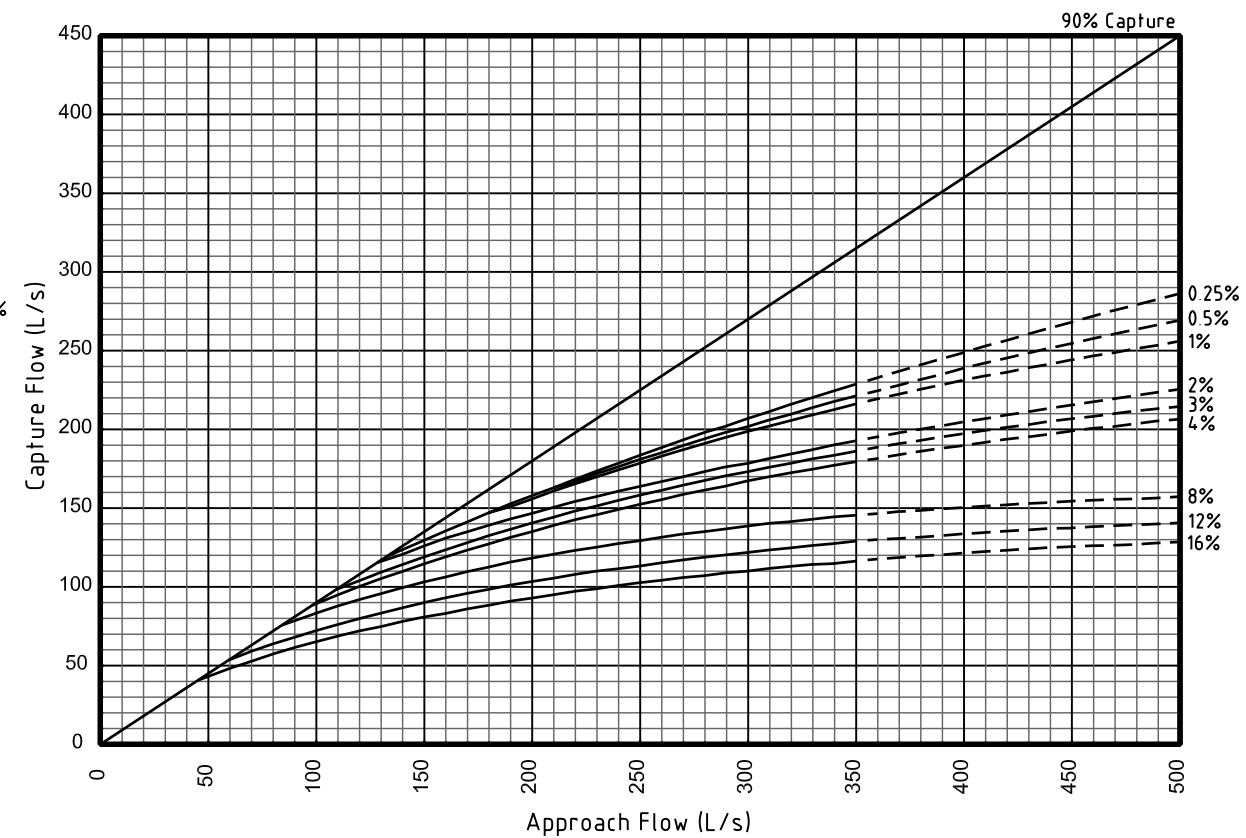
2.5% ROAD CROSSFALL - TRANSVERSE LOAD BAR GRATE



2.5% ROAD CROSSFALL - LONGITUDINAL LOAD BAR GRATE

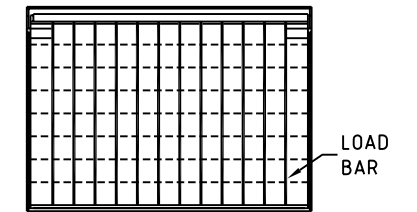


3% ROAD CROSSFALL - TRANSVERSE LOAD BAR GRATE

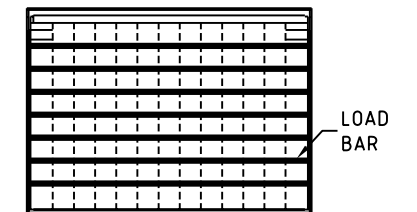


3% ROAD CROSSFALL - LONGITUDINAL LOAD BAR GRATE

GRATE DETAILS



TYPICAL ARRANGEMENT  
TRANSVERSE LOAD BARS



TYPICAL ARRANGEMENT  
LONGITUDINAL LOAD BARS

NOTES

1. THESE CHARTS ARE TO BE USED FOR STANDARD GCCC INLET GULLY DWG 05-03-001
2. A 10% BLOCKAGE FACTOR HAS BEEN APPLIED TO THIS CHART (REFER QUDM 5.10.2).
3. EXTRAPOLATION BEYOND THE LIMITS OF THE CHARTS SHOULD NOT BE UNDERTAKEN.
4. THE DATA IN THIS CHART WAS PRODUCED BY THE URBAN WATER RESOURCES CENTRE, UNIVERSITY OF SOUTH AUSTRALIA (REPORT JULY 2001).
5. TESTING WAS BASED ON CROSSFALLS OF 1 IN 30 AND 1 IN 40.
6. GULLY INLET FREEBOARD REQUIREMENTS:-

LONGITUDINAL GRADE	LINTEL		
	2400	3600	4800
≤3.0%	150mm	150mm	150mm
>3.0%	150mm	350mm	350mm

LEGEND

- % KERB AND CHANNEL LONGITUDINAL SLOPE ( $S_0$ )
- BASED ON ACTUAL DATA
- - - - - EXTRAPOLATED DATA

**Gold Coast City Council**  
GOLD COAST CITY COUNCIL  
PO BOX 5042  
GOLD COAST MC 9729

THIS DRAWING IS NOT TO BE AMENDED WITHOUT REFERENCE TO STANDARDS COMMITTEE				CONTROLLED DOCUMENT
No.	AMENDMENT	APPROVED	DATE	ISSUED

DO NOT SCALE  
TAKE FIGURED DIMENSIONS ONLY

DRAWN BY  
TECHNICAL SERVICES BRANCH

PASSED *[Signature]* 18/03/04

APPROVED *[Signature]* 18/03/04

**STANDARD DRAWING**  
**HYDRAULIC CAPTURE CHARTS**  
**BARRIER KERB AND CHANNEL**  
**LIP IN LINE, 2400 LINTEL**

MICROFILMED

STANDARD DRAWING No.  
**05-03-501**

ISSUE  
2005 EDITION