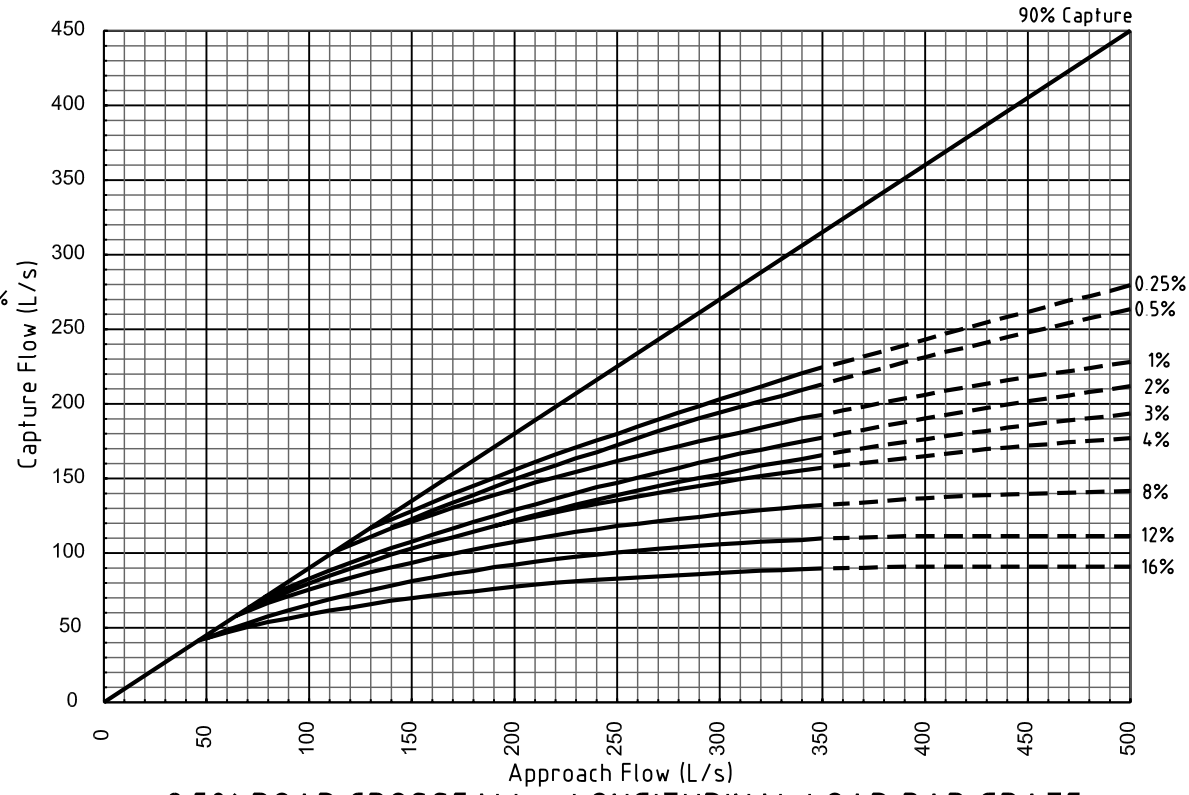
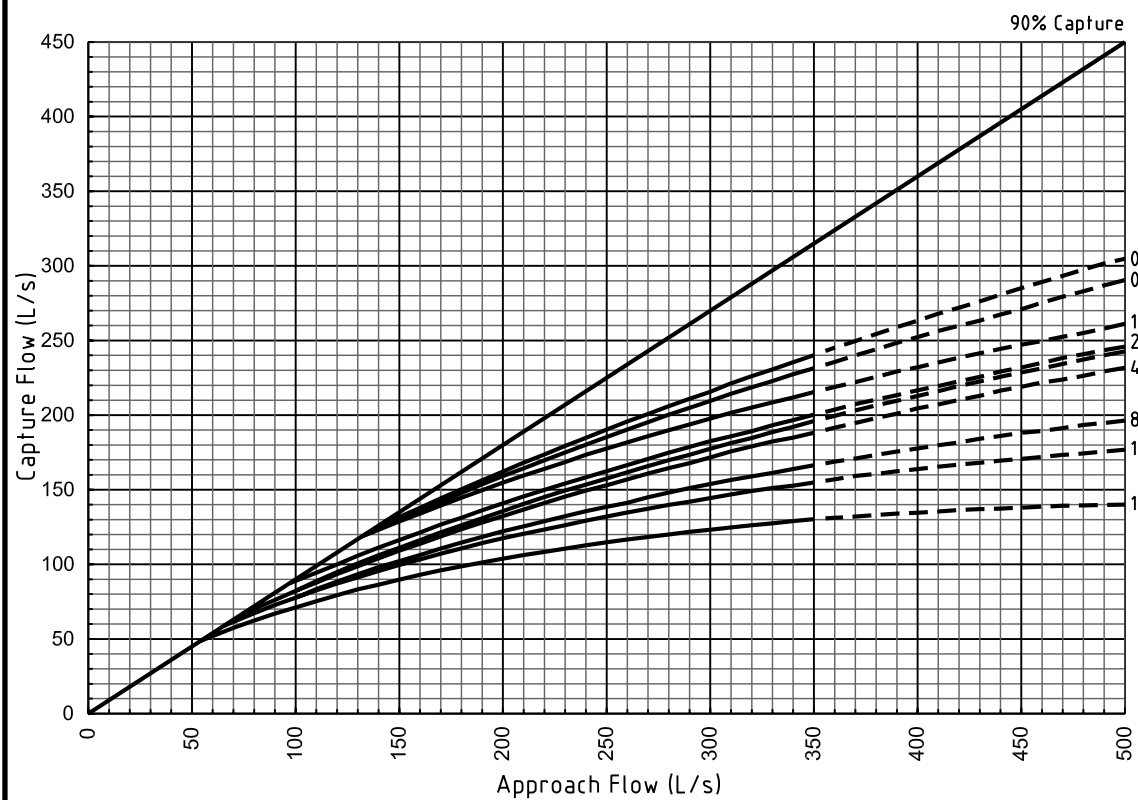


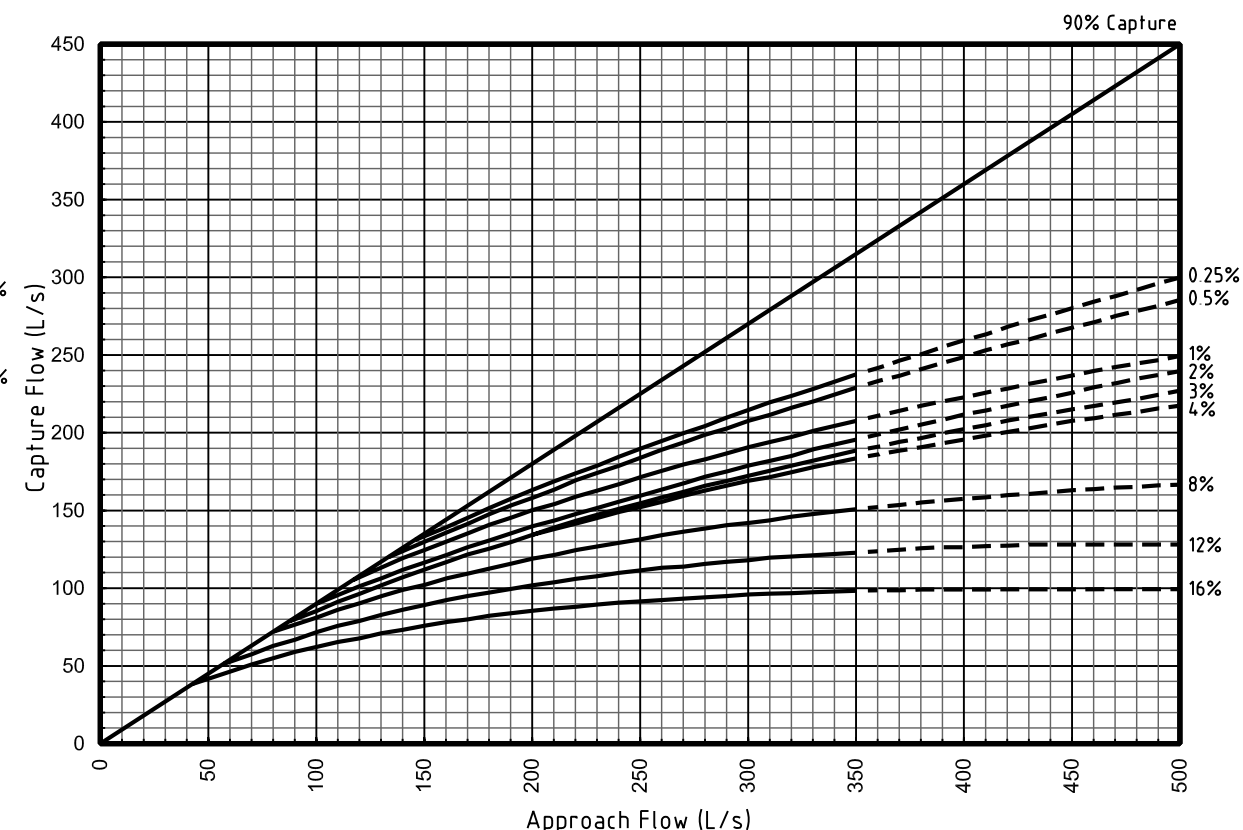
2.5% ROAD CROSSFALL - TRANSVERSE LOAD BAR GRATE



2.5% ROAD CROSSFALL - LONGITUDINAL LOAD BAR GRATE

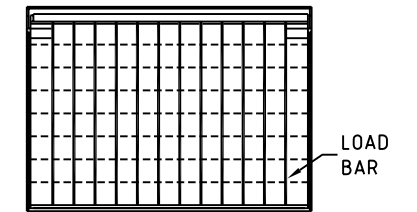


3% ROAD CROSSFALL - TRANSVERSE LOAD BAR GRATE

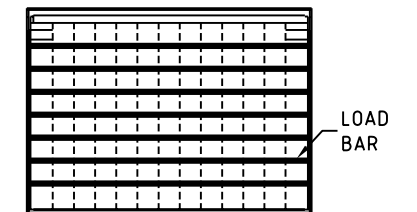


3% ROAD CROSSFALL - LONGITUDINAL LOAD BAR GRATE

GRATE DETAILS



TYPICAL ARRANGEMENT
TRANSVERSE LOAD BARS



TYPICAL ARRANGEMENT
LONGITUDINAL LOAD BARS

NOTES

1. THESE CHARTS ARE TO BE USED FOR STANDARD GCCC INLET GULLY DWG 05-03-001
2. A 10% BLOCKAGE FACTOR HAS BEEN APPLIED TO THIS CHART (REFER QUDM 5.10.2).
3. EXTRAPOLATION BEYOND THE LIMITS OF THE CHARTS SHOULD NOT BE UNDERTAKEN.
4. THE DATA IN THIS CHART WAS PRODUCED BY THE URBAN WATER RESOURCES CENTRE, UNIVERSITY OF SOUTH AUSTRALIA (REPORT JULY 2001).
5. TESTING WAS BASED ON CROSSFALLS OF 1 IN 30 AND 1 IN 40.
6. GULLY INLET FREEBOARD REQUIREMENTS:-

| LONGITUDINAL GRADE | LINTEL | | |
|--------------------|--------|-------|-------|
| | 2400 | 3600 | 4800 |
| ≤3.0% | 150mm | 150mm | 150mm |
| >3.0% | 150mm | 350mm | 350mm |

LEGEND

- % KEROB AND CHANNEL LONGITUDINAL SLOPE (S_0)
- BASED ON ACTUAL DATA
- - - - - EXTRAPOLATED DATA



| | | | | | |
|--|-----------|----------|------|---------------------|--|
| THIS DRAWING IS NOT TO BE AMENDED WITHOUT REFERENCE TO STANDARDS COMMITTEE | | | | CONTROLLED DOCUMENT | DO NOT SCALE TAKE FIGURED DIMENSIONS ONLY |
| No. | AMENDMENT | APPROVED | DATE | ISSUED | DRAWN BY TECHNICAL SERVICES BRANCH |
| | | | | | PASSED <i>[Signature]</i> 18/03/04 |
| | | | | | APPROVED <i>[Signature]</i> 18/03/04 |

STANDARD DRAWING
HYDRAULIC CAPTURE CHARTS
ROLL TOP KERB AND CHANNEL
LIP IN LINE, 2400 LINTEL

| |
|--|
| MICROFILMED |
| STANDARD DRAWING No. 05-03-601 |
| ISSUE 2005 EDITION |