

**ASSEMBLY NOTES:**

1. ALL FASTENERS TO BE INCLUDED IN SUPPLY OF ASSEMBLY UNLESS OTHERWISE INDICATED.
2. ALL SURFACES TO BE FREE FROM MARKS AND SCRATCHES.
3. USE A NICKEL BASED ANTI-SEIZURE LUBRICANT BETWEEN STAINLESS FIXINGS AND TAPPED STAINLESS STEEL UNLESS STATED.
4. PRE DRILL WOODEN SLATS PRIOR TO SCREWING TO AVOID SPLITTING

**GENERAL NOTES:**

1. ALL DIMENSIONS IN MILLIMETRES UNLESS OTHERWISE SHOWN.
2. TOLERANCES:  
- LINEAR ARE  $\pm 1.0\text{mm}$  UNLESS MARKED WITH  $\times \pm 0.5\text{mm}$   
- ANGULAR ARE  $\pm 0.5^\circ$  UNLESS SPECIFIED OTHERWISE.  
- HOLES AND RADII  $\pm 0.5\text{mm}$  UNLESS SPECIFIED OTHERWISE.
3. NO DEVIATION FROM DRAWING WILL BE ACCEPTED WITHOUT PRIOR WRITTEN APPROVAL.
4. DO NOT SCALE FROM DRAWINGS. USE DIMENSIONS PROVIDED IF THIS IS INSUFFICIENT OR AMBIGUOUS CONTACT GOLD COAST CITY COUNCIL FOR CLARIFICATION.

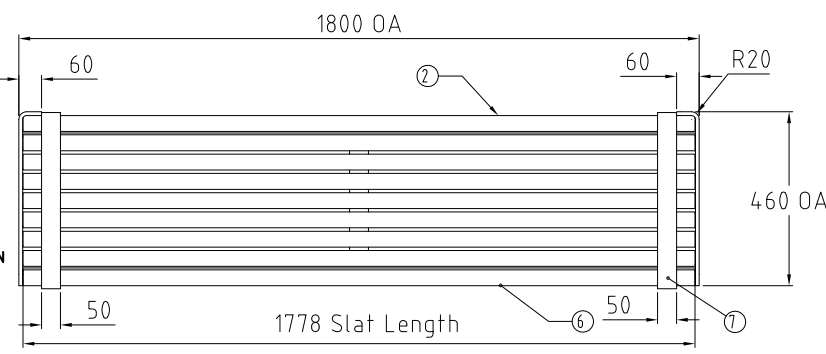
**HOT DIP GALVANISED STEEL FABRICATION NOTES:**

1. ALL SPLATTER AND SLAG TO BE REMOVED.
2. ALL EDGES TO BE DEBURRED AND FREE OF SHARP EDGES AND PROTRUSIONS.
3. WELDING AND PREPARATION TO BE IN ACCORDANCE WITH AS1554.1 CATEGORY SP GRADE E48XX AND AS4100.
4. ALL WELDS TO BE 6mm CONTINUOUS FILLET WELD.
5. ALL GALVANISED HOLLOW SECTIONS TO HAVE ADEQUATE, IDEALLY HIDDEN VENTILATION HOLES.
6. ALL HOLES TO BE RE-DRILLED AFTER GALVANISING.
7. ALL TAPPED HOLES TO BE RE-TAPPED AFTER GALVANISING.
8. ALL STANDARD SECTIONS TO BE DOCKED AT  $90^\circ$  UNLESS STATED OTHERWISE.
9. GALVANISE IN ACCORDANCE WITH AS/NZS 4680. MINIMUM THICKNESS MUST BE NOT LESS THAN  $500\text{g/m}^2$ .
10. CERTIFICATES OF CONFORMITY MUST ACCOMPANY ANY MATERIALS USED IN THE FABRICATION PROCESS.

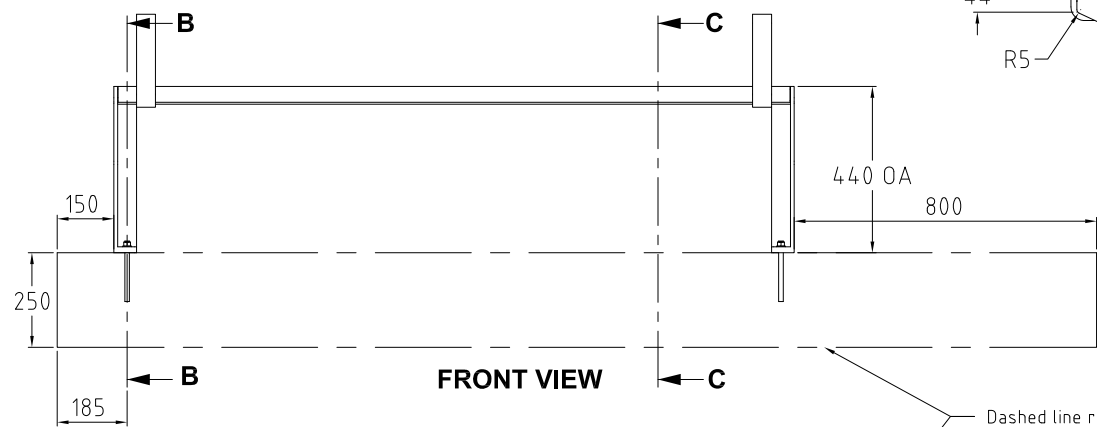
NOTE: SLAT ATTACHMENT Use a jig or spacers to allow correct and even spacing of the slats. Position slats and pilot ( $\phi 3.5\text{mm}$ ) hole before securing with fasteners. Always predrill Timber Slats before fastening. Mount slats centre down.

**NOTE:- THIS DRAWING HAS BEEN SOURCED FROM HUBB STREET EQUIPMENT. THIS DRAWING IS NOT DRAWN TO GCCC STANDARD T.P.R GUIDELINES.**

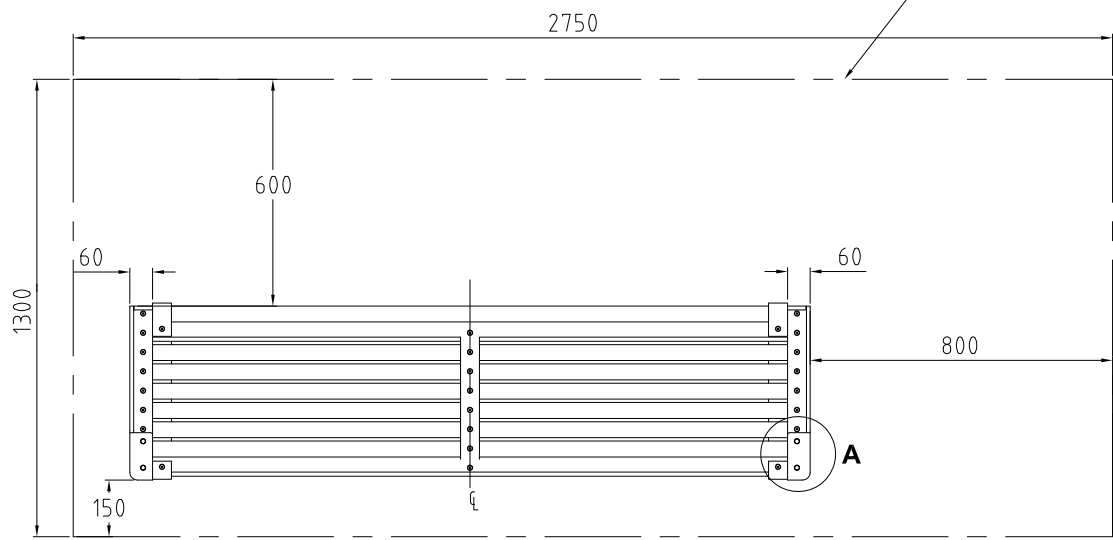
PARTS LIST				
NO.	TITLE	MATERIAL	DRAWING #	Qty
1	Frame	Mild Steel Hot Dipped Galvanized	-	1
2	Urban Slat Special	Spotted Gum	05-530	1
3	Urban Slat Standard	Spotted Gum	05-530	7
4	12g x 32 Csk Hex Post Security Woodscrew	304 S/S	-	30
5	M12 x 250 HILTI HAS System	Galvanized Steel	-	4
6	Urban Seat Slat	Spotted Gum	05-530	1
7	Urban Armrest	Galvanized Steel	05-535	2



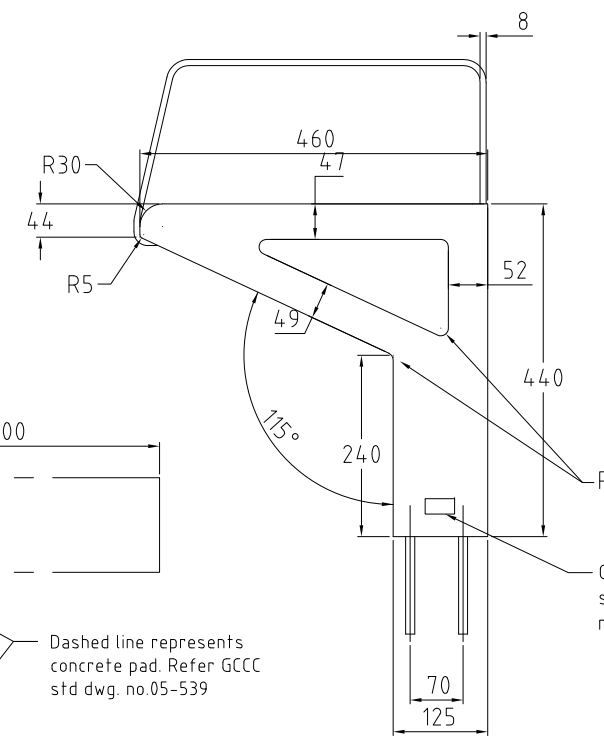
**TOP VIEW**



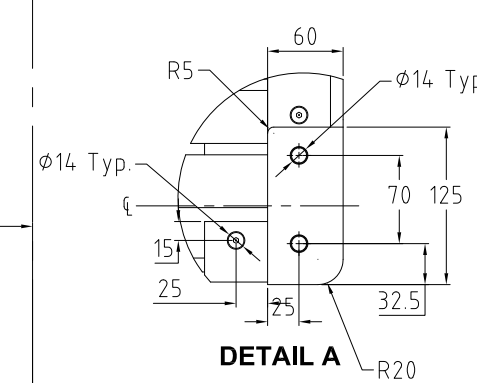
**FRONT VIEW**



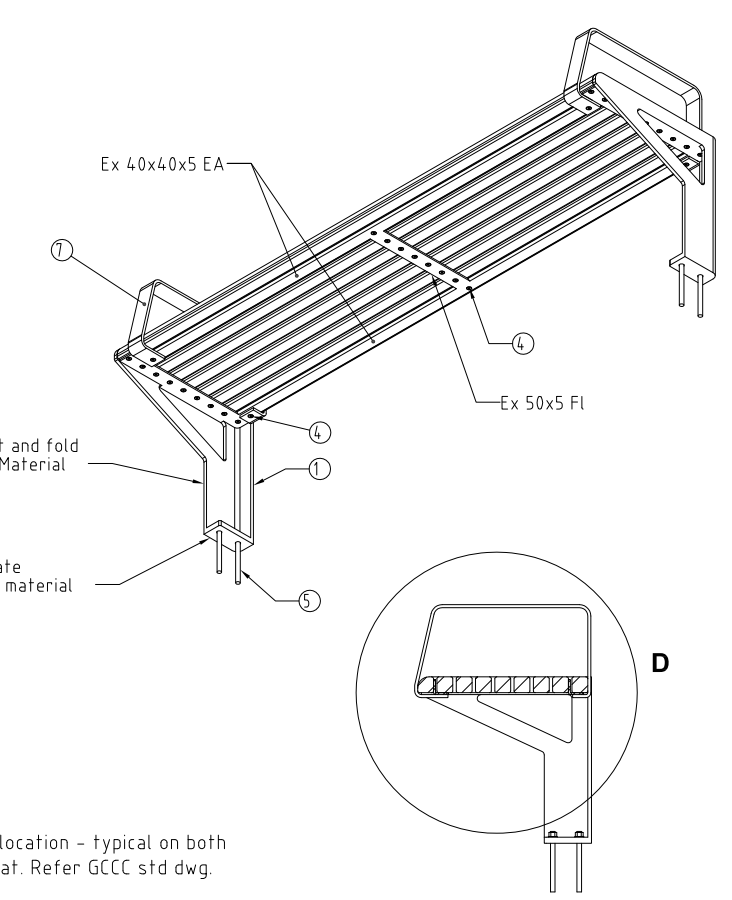
**BOTTOM VIEW**



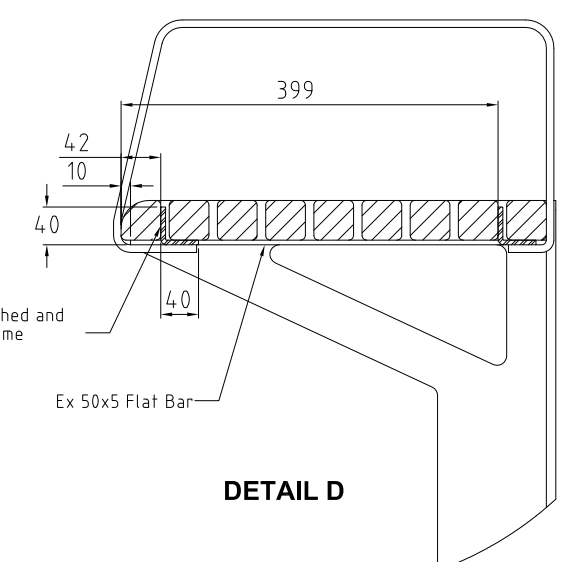
**RIGHT VIEW**



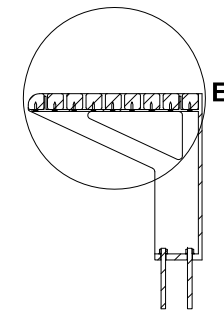
**DETAIL A**



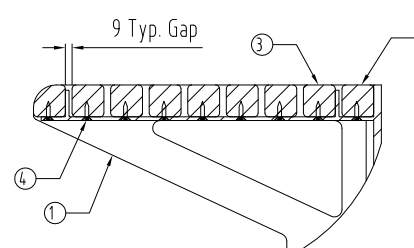
**SECTION C-C**



**DETAIL D**



**SECTION B-B**



**DETAIL E**



THIS DRAWING IS NOT TO BE AMENDED WITHOUT REFERENCE TO STANDARDS COMMITTEE				CONTROLLED DOCUMENT	DO NOT SCALE TAKE FIGURED DIMENSIONS ONLY
				DRAFTING BY	TECHNICAL SERVICES BRANCH
				PASSED - COORDINATOR OPEN SPACE ASSETS	
				SIGNED:	CAMERON TAYLOR DATE: 6/12/12
				APPROVED - MANAGER PARKS & RECREATIONAL SERVICES	
				SIGNED:	RON JACOBS DATE: 6/12/12
No.	AMENDMENT	APPROVED	DATE	ISSUED	

**STANDARD DRAWING**

**URBAN SUITE - BENCH**

THIS DRAWING HAS BEEN SOURCED FROM HUBB STREET EQUIPMENT DRAWING NUMBERS 7432.901 TO 7432.938

MICROFILMED

STANDARD DRAWING No. **13-05-502**

ISSUE **2013 EDITION**