

ASSEMBLY NOTES:

1. ALL FASTENERS TO BE INCLUDED IN SUPPLY OF ASSEMBLY UNLESS OTHERWISE INDICATED.
2. ALL SURFACES TO BE FREE FROM MARKS AND SCRATCHES.
3. USE A NICKEL BASED ANTI-SEIZURE LUBRICANT BETWEEN STAINLESS FIXINGS AND TAPPED STAINLESS STEEL UNLESS STATED.
4. PRE DRILL WOODEN SLATS PRIOR TO SCREWING TO AVOID SPLITTING

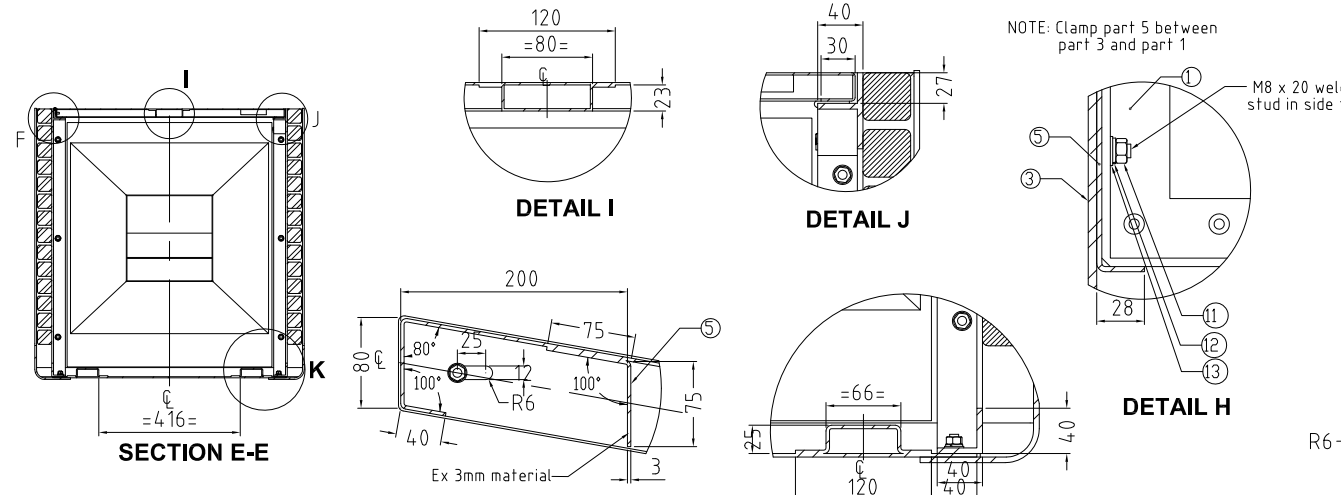
GENERAL NOTES:

1. ALL DIMENSIONS IN MILLIMETRES UNLESS OTHERWISE SHOWN.
2. TOLERANCES:
 - LINEAR ARE $\pm 1.0\text{mm}$ UNLESS MARKED WITH $\times \pm 0.5\text{mm}$
 - ANGULAR ARE $\pm 0.5^\circ$ UNLESS SPECIFIED OTHERWISE.
 - HOLES AND RADII $\pm 0.5\text{mm}$ UNLESS SPECIFIED OTHERWISE.
3. NO DEVIATION FROM DRAWING WILL BE ACCEPTED WITHOUT PRIOR WRITTEN APPROVAL.
4. DO NOT SCALE FROM DRAWINGS. USE DIMENSIONS PROVIDED IF THIS IS INSUFFICIENT OR AMBIGUOUS CONTACT GOLD COAST CITY COUNCIL FOR CLARIFICATION.

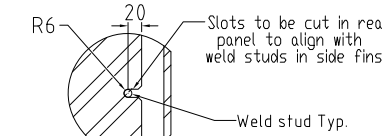
HOT DIP GALVANISED STEEL FABRICATION NOTES:

1. ALL SPLATTER AND SLAG TO BE REMOVED.
2. ALL EDGES TO BE DEBURRED AND FREE OF SHARP EDGES AND PROTRUSIONS.
3. WELDING AND PREPARATION TO BE IN ACCORDANCE WITH AS1554.1 CATEGORY SP GRADE E48XX AND AS4100.
4. ALL WELDS TO BE 6mm CONTINUOUS FILLET WELD.
5. ALL GALVANISED HOLLOW SECTIONS TO HAVE ADEQUATE, IDEALLY HIDDEN VENTILATION HOLES.
6. ALL HOLES TO BE RE-DRILLED AFTER GALVANISING.
7. ALL TAPPED HOLES TO BE RE-TAPPED AFTER GALVANISING.
8. ALL STANDARD SECTIONS TO BE DOCKED AT 90° UNLESS STATED OTHERWISE.
9. GALVANISE IN ACCORDANCE WITH AS/NZS 4680. MINIMUM THICKNESS MUST BE NOT LESS THAN 500 g/m^2 .
10. CERTIFICATES OF CONFORMITY MUST ACCOMPANY ANY MATERIALS USED IN THE FABRICATION PROCESS.

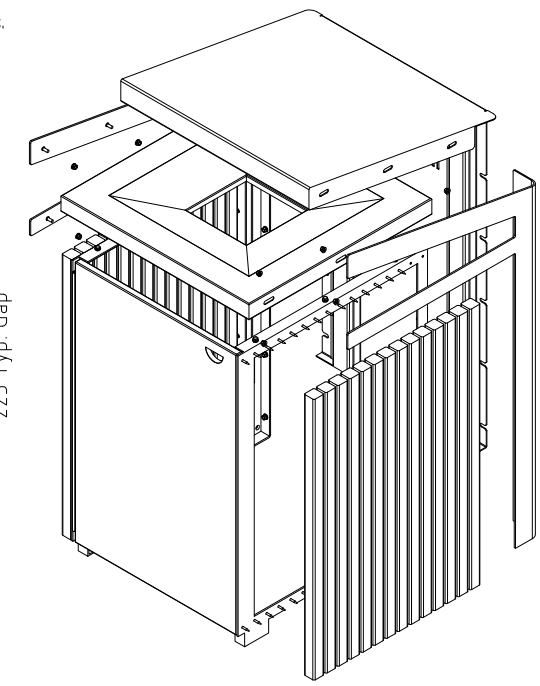
PARTS LIST				
NO.	TITLE	MATERIAL	DRAWING #	QTY.
1	Right Frame	Mild Steel Hot Dipped Galvanised	-	1
2	Left Frame	Mild Steel Hot Dipped Galvanised	-	1
3	Right Fin	Mild Steel Hot Dipped Galvanised	-	1
4	Left Fin	Mild Steel Hot Dipped Galvanised	-	1
5	Rear Panel	Mild Steel Hot Dipped Galvanised	-	1
6	Chute	Mild Steel Hot Dipped Galvanised	-	1
7	Door	Mild Steel Hot Dipped Galvanised	-	1
8	Plastic Latch - Male	Nylon	-	1
9	Plastic Latch - Female	Nylon	-	1
10	M8 X 20 Hex Bolt	304 S/S	-	6
11	M8 Hex Nut	304 S/S	-	30
12	M8 Split Washer	304 S/S	-	43
13	M8 Flat Washer	304 S/S	-	36
14	14 gauge x 32mm Pan Phillips Woodscrew	304 S/S	-	56
15	Rivet 5mm	304 S/S	-	9
16	Urban Slat	Plantation Hardwood	05-530	28
17	Windeyer 5015G18 Continuous Hinge	Galvabond	P/N: 5015G18	1



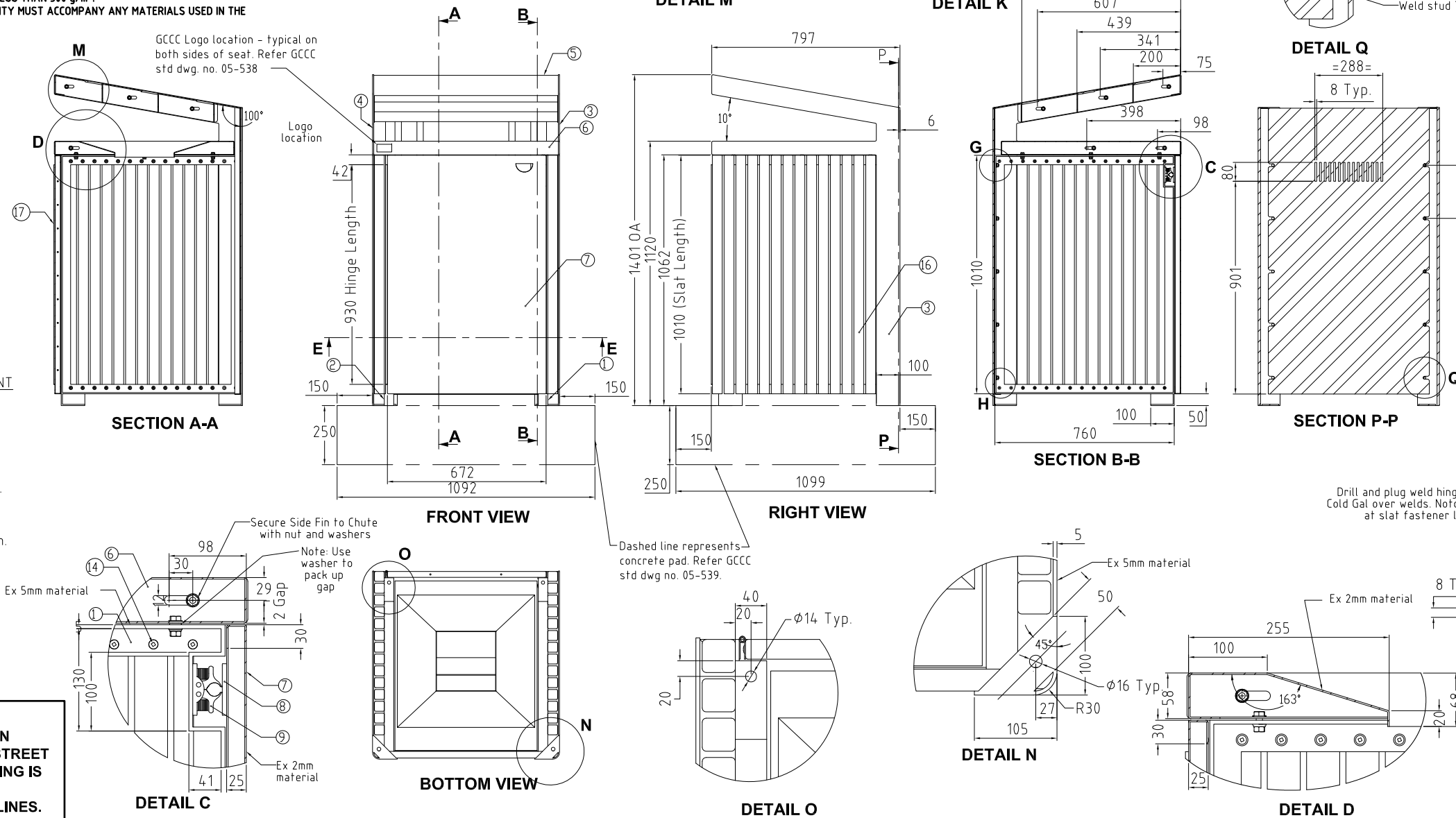
NOTE: Clamp part 5 between part 3 and part 1



NOTE: For footing details. Refer to GCCC std. dwg. no.05-539.



NOTE: SLAT ATTACHMENT
Use a jig or spacers to allow correct and even spacing of the slats. Position slats and pilot ($\phi 3.5\text{mm}$) hole before securing with fasteners. Always predrill Timber Slats before fastening. Mount slats centre down.

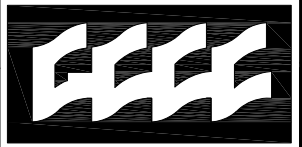


Rivet hinge to door. Drill holes in hinge to align with holes in door.

Drill and plug weld hinge to frame. Cold Gal over welds. Notch hinge leaf at slat fastener locations.

Dashed line represents concrete pad. Refer GCCC std dwg no. 05-539.

NOTE:- THIS DRAWING HAS BEEN SOURCED FROM HUBB STREET EQUIPMENT. THIS DRAWING IS NOT DRAWN TO GCCC STANDARD T.P.R GUIDELINES.



GOLD COAST CITY COUNCIL
PO BOX 5042
GOLD COAST MC 9729

THIS DRAWING IS NOT TO BE AMENDED WITHOUT REFERENCE TO STANDARDS COMMITTEE				CONTROLLED DOCUMENT	DO NOT SCALE TAKE FIGURED DIMENSIONS ONLY	STANDARD DRAWING	MICROFILMED
							STANDARD DRAWING No.
						URBAN SUITE - 240L WHEELIE BIN ENCLOSURE	13-05-510
							ISSUE
							2013 EDITION

DRAFTING BY		TECHNICAL SERVICES BRANCH	
PASSED - COORDINATOR OPEN SPACE ASSETS			
SIGNED:	CAMERON TAYLOR	DATE:	6/12/12
APPROVED - MANAGER PARKS & RECREATIONAL SERVICES			
SIGNED:	RON JACOBS	DATE:	6/12/12

THIS DRAWING HAS BEEN SOURCED FROM HUBB STREET EQUIPMENT DRAWING NUMBERS 7432.901 TO 7432.938			
---	--	--	--

STANDARD DRAWING No.		13-05-510
ISSUE		2013 EDITION