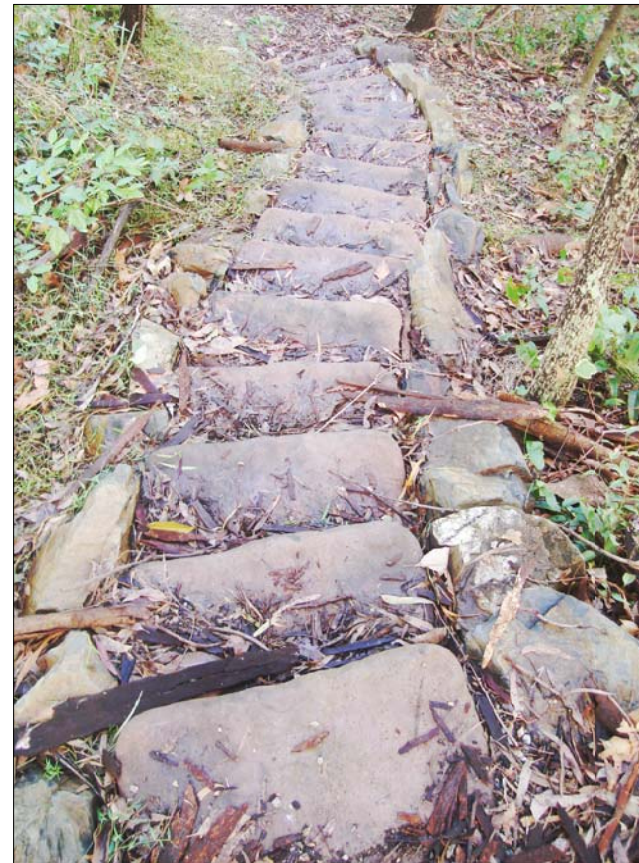
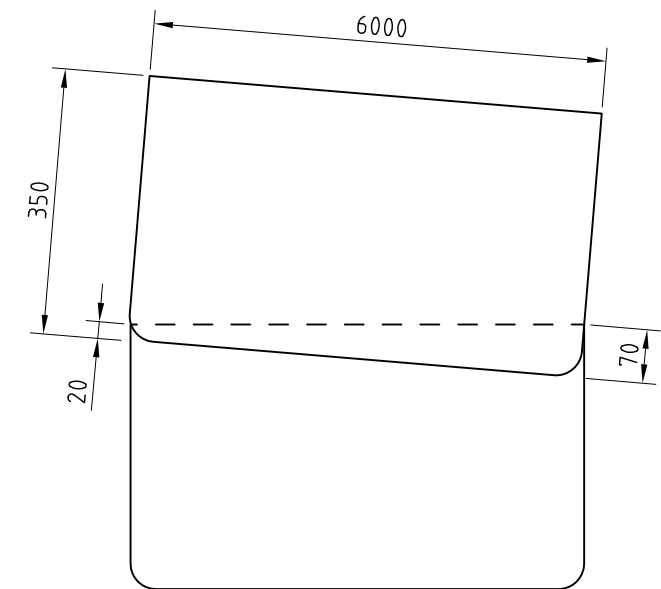


**TYPE 1 TREADS**

THE TYPE 1 - 600 X 350 X 160 mm CONCRETE TREADS ARE SUPPLIED IN 4 STYLES/PATTERNS. ALL ARE IMPRINTED ON THE BACK OF THE TREADS WITH THE LETTERS A, B, C OR D. THEY ARE ALSO MARKED ON THE TOP OF THE TREAD WITH A MOULDED IMPRINT (DOT). ONE DOT REPRESENTS STYLE A, TWO DOTS IS STYLE B, THREE DOTS STYLE C AND FINALLY, FOUR DOTS STYLE D. TREADS UNITS ARE FORMED WITH AN INTERNAL CAVITY HAVING A MINIMUM WALL THICKNESS OF 50mm, (THIS IS NOT SHOWN HERE FOR CLARITY).



**WIND IN PATH CURVES**



**MAXIMUM WIND**

THE TREADS CAN ALSO BE LAID TO WIND IN A CURVE. THE MAXIMUM WIND ACROSS A TREAD IS 50mm. THE TOP TREAD MUST LAP THE BOTTOM TREAD BY AT LEAST 20mm THEREFORE REDUCING THE NARROWEST SIDE OF THE WINDING TREAD BY 70mm

TREADS ARE ALSO DESIGNED TO BE LAID SIDE BY SIDE TO ACHIEVE A WIDER STEP, FOR EXAMPLE:

- 2 TREADS = 1 X 1200mm WIDE STEP
- 3 TREADS = 1 X 1800mm WIDE STEP

ALL THE FOLLOWING FOOTING AND RETAINING REQUIREMENTS MUST BE USED UNDER ALL TREADS NO MATTER THE WIDTH OF TRACK. TREADS MUST BE LAID AS CLOSE AS POSSIBLE TOGETHER TO MINIMISE THE GAP BETWEEN TREADS.

**Gold Coast City Council**  
GOLD COAST CITY COUNCIL  
PO BOX 5042  
GOLD COAST MC 9729

THIS DRAWING IS NOT TO BE AMENDED WITHOUT REFERENCE TO STANDARDS COMMITTEE			
No.	AMENDMENT	APPROVED	DATE

CONTROLLED DOCUMENT	DO NOT SCALE TAKE FIGURED DIMENSIONS ONLY
DRAFTING BY	TECHNICAL SERVICES BRANCH
PASSED - COORDINATOR OPEN SPACE ASSETS	
SIGNED:	
NAME: CAMERON TAYLOR	DATE: 6/12/12
APPROVED - MANAGER PARKS & RECREATIONAL SERVICES	
SIGNED:	
NAME: RON JACOBS	DATE: 6/12/12

**STANDARD DRAWING**

**TYPE 1 TREADS**

MICROFILMED
STANDARD DRAWING No. <b>13-05-810</b>
ISSUE <b>2013 EDITION</b>