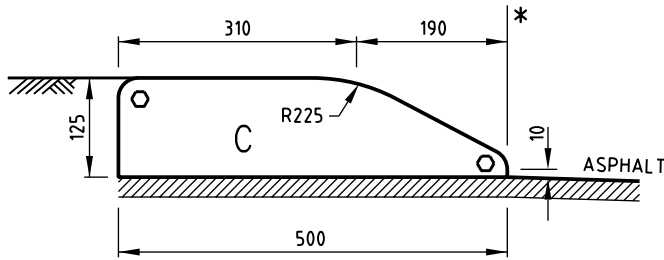
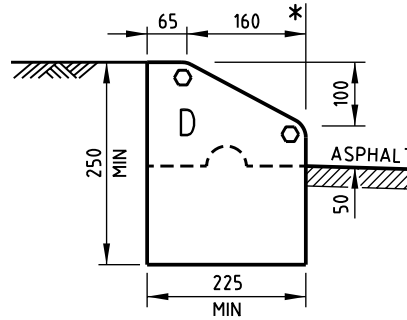


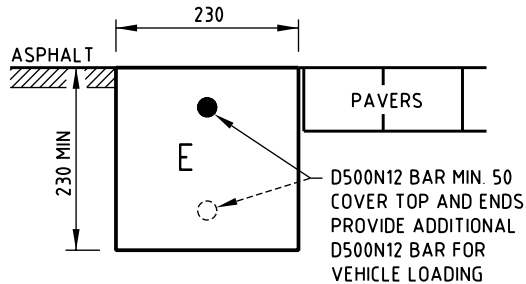
**BARRIER TYPES**



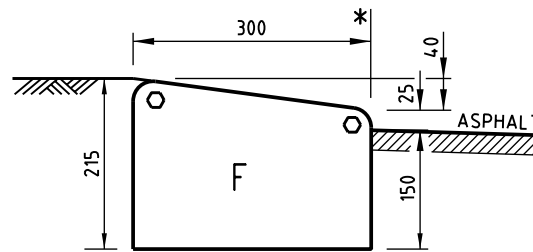
**SEMI-MOUNTABLE TYPE**



**MOUNTABLE TYPE**



**EDGE RESTRAINT**



**KERB EDGE RESTRAINT**

**KERB SECTIONS**

**LEGEND:**

- \* NOMINAL KERB LINE
- 20 RADIUS
- - - PRECAST KERB SECTION

**PRECAST NOTES:**

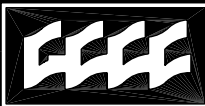
1. ALL RECESSES TO BE  $\phi 50\text{mm}$  UNLESS SHOWN OTHERWISE.
2. BLOCKS TO BE BEDDED WITH MORTAR ON AN APPROVED PRIME SEAL AS DETAILED IN THE PRECAST MORTAR BED DETAIL ON STD. DWG. No. 05-02-102.

**EXTRUDED NOTES:**

1. PROVIDE SQUARE EDGE TO KERBING WHERE SEGMENTED PAVING ABUTS.
2. CONCRETE FOR KERB SECTIONS TO BE GRADE S25, (KERB MIX - 7mm OR 10mm AGGREGATE).
3. ALL KERB SECTIONS TO BE BEDDED ON TOP OF THE SUB-BASE PAVEMENT LAYER, OR A 75mm MIN COMPACTED CLASS 2 (MIN) GRAVEL UNLESS DIRECTED OTHERWISE BY COUNCIL.
4. CONTROL JOINTS SHALL BE APPROXIMATELY 3.0m CENTRES OR AS DIRECTED BY COUNCIL.
5. FOR SURFACE MOUNTED KERB TYPES A, B AND D USE EXPANSION JOINTS PROVIDING FULL DEPTH CLOSED CELL CROSSLINKED POLYETHYLENE FOAM ( $85-150\text{kg/m}^3$ ) AT 12m CENTRES UNLESS OTHERWISE DIRECTED BY COUNCIL.
5. PROVIDE EXPANSION JOINTS WHERE K&C ABUTS SUBSTANTIAL EXISTING STRUCTURES SUCH AS BRIDGES OR WHERE DIRECTED. WHERE RELEVANT LOCATE JOINTS TO LINE UP WITH EXPANSION JOINTS IN ADJACENT STRUCTURES SUCH AS RIGID PAVEMENTS AND CONCRETE SLABS. JOINT MATERIALS AS PER NOTE 5.
6. HEAVY DUTY PROFILES TO BE USED IN INDUSTRIAL AND COMMERCIAL AREAS.
7. CONCRETE TO BE COMPACTED AND FINISHED WITH STEEL FLOAT.
8. COUNCIL APPROVAL IS REQUIRED PRIOR TO PLACING EXTRUDED KERB ON EXISTING ASPHALT AND  $\phi 12$  SS BARS 300 LONG ARE TO BE PLACED AT 1m CENTRES WITH 150mm MIN EMBEDMENT INTO PAVEMENT.

**GENERAL NOTES:**

1. ALL KERB SECTIONS SHALL BE EXTRUDED UNLESS DIRECTED OTHERWISE BY THE SUPERINTENDENT.
2. WHERE KERB ENTRY ADAPTORS ARE USED THEY SHALL BE G.C.C.C. APPROVED. REFER KERB ENTRY DETAIL ON G.C.C.C. STD. DWG. No. 05-02-006.
3. DIMENSIONS ARE IN MILLIMETRES UNLESS SHOWN OTHERWISE.



Gold Coast City Council

PO BOX 5042 GOLD COAST MC 9729

THIS DRAWING IS NOT TO BE AMENDED WITHOUT REFERENCE TO STANDARDS COMMITTEE			CONTROLLED DOCUMENT	DO NOT SCALE TAKE FIGURED DIMENSIONS ONLY	
No.	AMENDMENT	APPROVED	DATE	ISSUED	

DRAWN BY	TECHNICAL SERVICES BRANCH
PASSED	18/03/04
APPROVED	19/03/04

STANDARD DRAWING	MICROFILMED
KERB PROFILES	STANDARD DRAWING No. 05-02-101
PLAN 1 OF 2	ISSUE 2005 EDITION