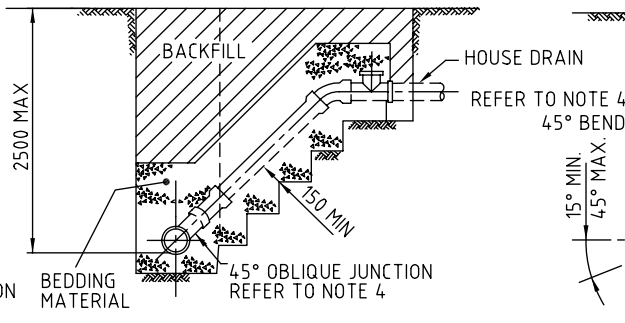
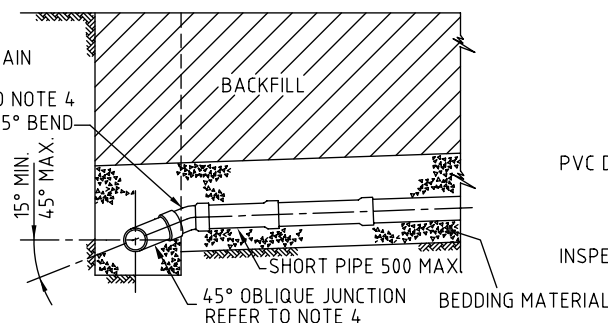


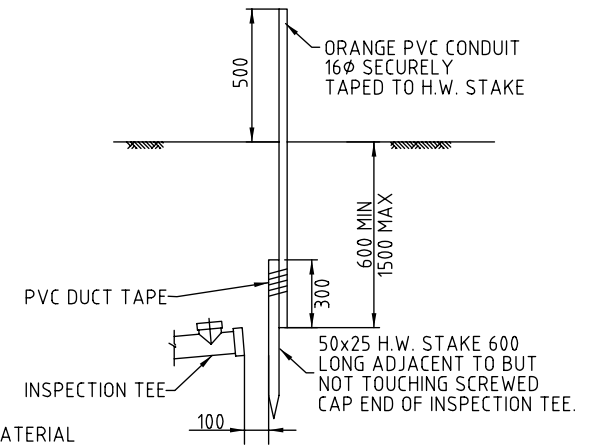
ELEVATION



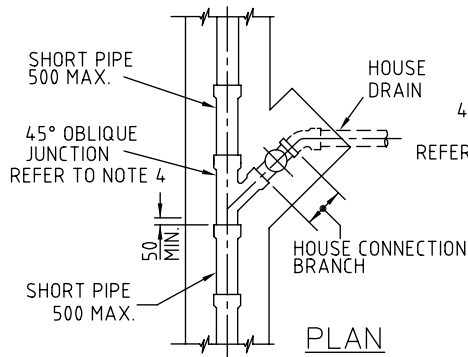
ELEVATION



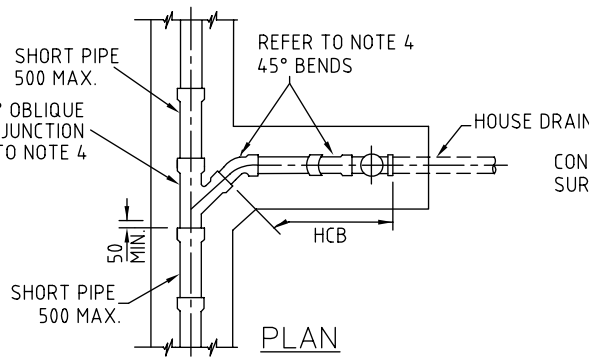
ELEVATION



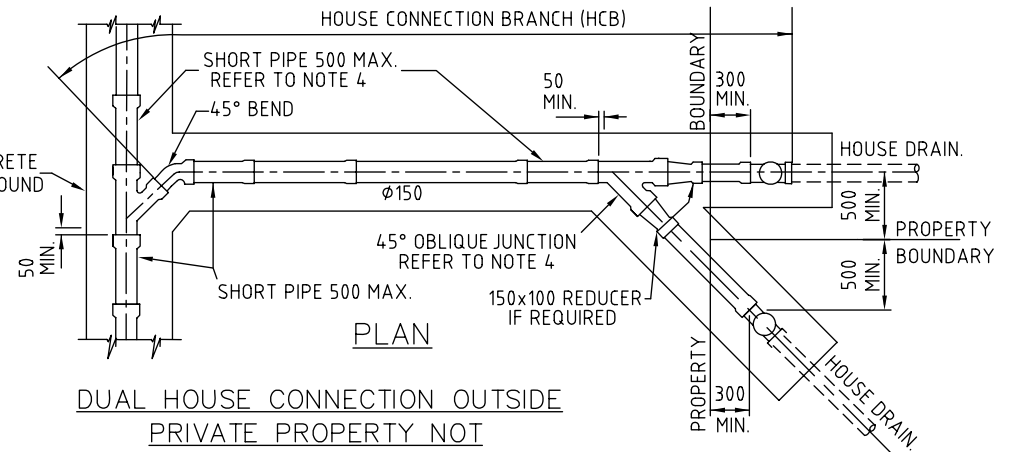
HOUSE CONNECTION INSPECTION TEE LOCATION MARKER ARRANGEMENT



TYPE 'A'
HOUSE CONNECTION WITHIN
PRIVATE PROPERTY



TYPE 'B'
HOUSE CONNECTION WITHIN PRIVATE
PROPERTY SLOPE UP TYPE



DUAL HOUSE CONNECTION OUTSIDE
PRIVATE PROPERTY NOT
CROSSING ROAD

NOTES:

1. ALL HOUSE CONNECTION BRANCHES SHALL HAVE A MINIMUM GRADE OF 1 IN 60 FOR $\phi 100$ AND 1 IN 80 FOR $\phi 150$.
2. LIMIT OF WORKS - ALL HOUSE CONNECTION BRANCHES SHALL FINISH WITH AN INSPECTION TEE WITH THE END AND INSPECTION OPENING SCREW CAPPED TO THE INVERT LEVEL SHOWN ON THE DRAWINGS.
3. ALL HOUSE CONNECTION BRANCHES CROSSING ROADS SHALL CONNECT INTO MANHOLES.
4. ALL HOUSE CONNECTION BRANCH FITTINGS SUCH AS MOULDED OBLIQUE JUNCTIONS AND BENDS, SHALL BE FIBREGLASS REINFORCED AS DETAILED FOR THE TYPE 'D' JUNCTION WITHIN GCCC STD DWG No 08-07-107 OR MAY BE APPROVED G.R.P. JUNCTIONS AND BENDS.
5. BEDDING MATERIAL SHALL COMPLY WITH THE REQUIREMENTS OF COUNCIL'S STANDARD SPECIFICATION SS1.
6. ALL PIPE JOINTS SHALL CONFORM WITH COUNCIL'S STANDARD SPECIFICATION SS 1 AND THE MANUFACTURERS RECOMMENDATIONS.
7. DIMENSIONS ARE IN MILLIMETRES UNLESS SHOWN OTHERWISE.



GOLD COAST CITY COUNCIL
PO BOX 5042
GOLD COAST MC 9729

THIS DRAWING IS NOT TO BE AMENDED WITHOUT REFERENCE TO STANDARDS COMMITTEE				CONTROLLED DOCUMENT	DO NOT SCALE TAKE FIGURED DIMENSIONS ONLY
				DRAWN BY TECHNICAL SERVICES BRANCH	
				PASSED	00/00/08
				APPROVED	00/00/08
No.	AMENDMENT	APPROVED	DATE	ISSUED	

STANDARD DRAWING

SEWERAGE HOUSE CONNECTION
CONSTRUCTION DETAILS
SHEET 1

MICROFILMED
STANDARD DRAWING No. 08-07-106
ISSUE 2008 EDITION