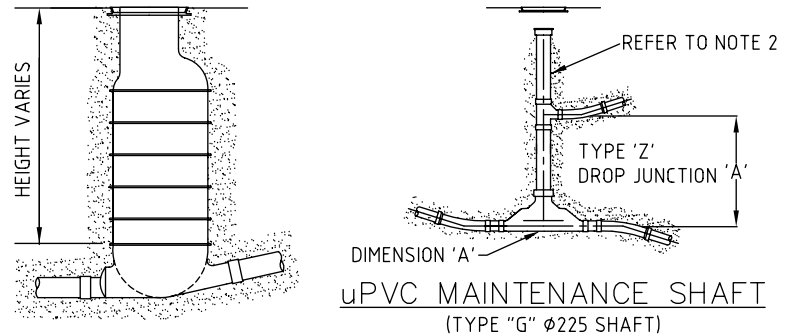


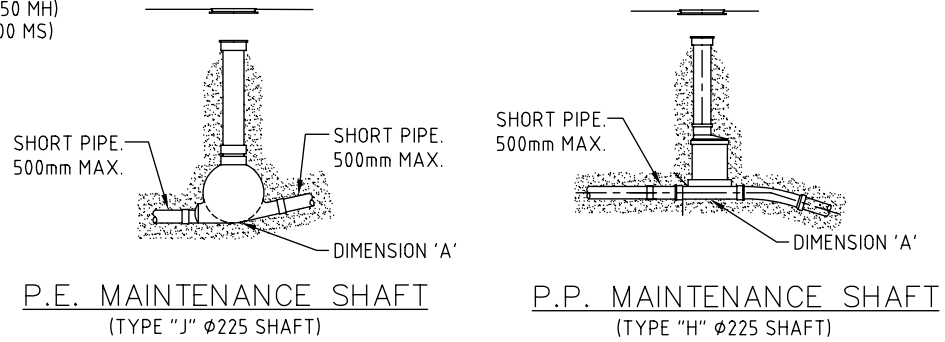
MAINTENANCE SHAFT DROP DETAILS
DIMENSION 'A'

	TYPE 'K' & 'L'		TYPE 'G'		TYPE 'H'		TYPE 'J'	
	MIN.	MAX.	MIN.	MAX.	MIN.	MAX.	MIN.	MAX.
TYPE 'Z'	REFER TYPE 'X'		805	2000	950	2000	750	2000
TYPE 'V'	REFER 08-07-108		00	30	00	30	00	00

MAINTENANCE SHAFT TYPE AND APPROVED ITEM		
uPVC	TYPE 'G' - 1 45° TEE AYMROO DWG No. # AYM 1260-11	
	TYPE 'G' - 2 90° TEE ABOVE & IPLEX PART No. # D00222545	
	TYPE 'G' - 3 STRAIGHT AYMROO DWG No. # AYM 1260-10.1	
	-	
	TYPE 'G' - 5 90° TEE AYMROO DWG No. # AYM 1260-5.1	
	TYPE 'G' - 6 END - TERMINAL MS AYMROO DWG No. # AYM 1260-7.1	
POLY-PROPYLENE	TYPE 'H' - 1 SMS PART No. # 400mm STRAIGHT	
	TYPE 'H' - 2 SMS PART No. # 400mm JUNCTION - L/R 45°	
POLY-ETHYLENE	TYPE 'J' -1 TYPE 'K' -1 TYPE 'L' -1	
ALL	TYPE 'Z' DROP JUNCTION FOR TYPE 'G', 'H' & 'J' MAINTENANCE SHAFTS RISER JUNCTION - AYMROO DWG No.# AYM 1260-9 (EQUAL IS ACCEPTABLE)	



PE MANHOLE
(SMART STREAM)
(TYPE K PE1050 MH)
(TYPE L PE600 MS)



ACCESS STRUCTURES

NOTES :

- THIS DRAWING SHALL BE READ IN CONJUNCTION WITH C.C.C.C STD DWG No. 08-07-116.
- ALL MAINTENANCE SHAFTS WITH 225 DIA. RISERS MAY UTILISE RISER JUNCTIONS TO EFFECT HIGH LEVEL ENTRIES SUBJECT TO SPECIFIC FITTINGS HEIGHTS AND INSTALLATION DESIGN, REFER MAINTENANCE SHAFT DROP DETAILS DIMENSION 'A'.
- FOR TYPICAL SEWERAGE INSTALLATION DETAILS REFER TO G.C.C.C. STD DWG No. 08-07-001
- RODDING END SHOWN SUITABLE FOR SEWER DEPTHS ≥800. FOR DEPTHS OF 600 TO 800 USE IPLEX BEND #DR 0315088 AND SPIGOT ACCESS COUPLING #D209150 OR EQUAL.
- TRENCH DRAINAGE SHALL CONFORM TO THE DETAILS PROVIDED ON G.C.C.C STD DWG No. 08-07-103.



THIS DRAWING IS NOT TO BE AMENDED WITHOUT REFERENCE TO STANDARDS COMMITTEE				CONTROLLED DOCUMENT	DO NOT SCALE TAKE FIGURED DIMENSIONS ONLY
					DRAWN BY G.C.W
					PASSED D. HAYMAN 08/07/08
					APPROVED R. WENT 08/07/08
No.	AMENDMENT	APPROVED	DATE	ISSUED	

STANDARD DRAWING

MAINTENANCE STRUCTURE

TYPICAL ARRANGEMENT DETAILS

MICROFILMED

STANDARD DRAWING No.
08-07-114

ISSUE
2008 EDITION