

NOTES:

GENERAL

1. THIS DRAWING SHOULD BE READ IN CONJUNCTION WITH G.C.C.C. STD. DWG. Nos. 08-07-125 TO 08-07-131 AND 08-07-134 AND G.C.C.C. STANDARD SPECIFICATIONS SS12 AND SS14.
2. THE LOCATION OF THE PUMP STATION SHALL BE AS DETAILED IN THE APPROVED DRAWINGS.
3. DIMENSIONS ARE IN MILLIMETRES UNLESS SHOWN OTHERWISE.
4. FOR RPZ DEVICE REFER TO G.C.C.C. STD DWG No. 08-07-126. * ONLY ONE CONDUIT REQUIRED.
5. FOR VENT POLE DETAILS REFER TO G.C.C.C. STD DWG No. 08-07-117.

SIZE

1. THE PUMP STATION HAS BEEN DESIGNED FOR USE WITH PUMPS OF $\phi 100$ AND $\phi 150$ DISCHARGE SIZES AND THE VALVE CHAMBER DIMENSIONED ACCORDINGLY.

LEVELS

1. UNLESS OTHERWISE APPROVED BY COUNCIL THE FINISHED LEVEL OF THE ACCESS COVERS AND CONTROL CUBICLE SHALL BE 100 ABOVE THE HIGHEST RECORDED FLOOD LEVEL. WHERE THE PUMP STATION IS SITUATED IN A FLOOD PRONE LOCATION THE LEVEL CRITERIA IS TO BE MET AND THE 1 IN 6 GRADE EXTENDED TO NATURAL.

COVERS & OPENINGS

1. PUMP STATION OPENINGS SHALL GENERALLY BE 1470 x 950 FITTED WITH LIGHT DUTY ACCESS COVERS AS PER G.C.C.C. STD. DWG. No. 08-07-127 (UNLESS DIRECTED OTHERWISE BY THE SUPERINTENDENT).
2. WHERE THE VOLUTE DIMENSIONS OF THE PUMP DOES NOT ALLOW 25 CLEARANCE OF THE OPENING OR SAFETY NET HOOKS WHEN IN THE FIXED POSITION THE DIMENSIONS OF THE PUMP STATION OPENING AND LIDS SHALL BE DETAILED IN THE APPROVED DRAWINGS.
3. VALVE SPINDLES SHALL BE DIRECTLY ACCESSIBLE THROUGH ACCESS PORTS EITHER WITHIN THE VALVE CHAMBER COVER OR TOP SLAB OPENING. A VALVE BOX AND COVER AS PER G.C.C.C. STD DWG No 08-06-125 SHALL BE CAST INTO THE TOP SLAB DIRECTLY OVER THE VALVE SPINDLE. THE ACCESS PORTS LOCATED IN THE COVER SHALL BE SELF RETAINING WHEN THE COVER IS OPEN.

ELECTRICAL CONDUITS

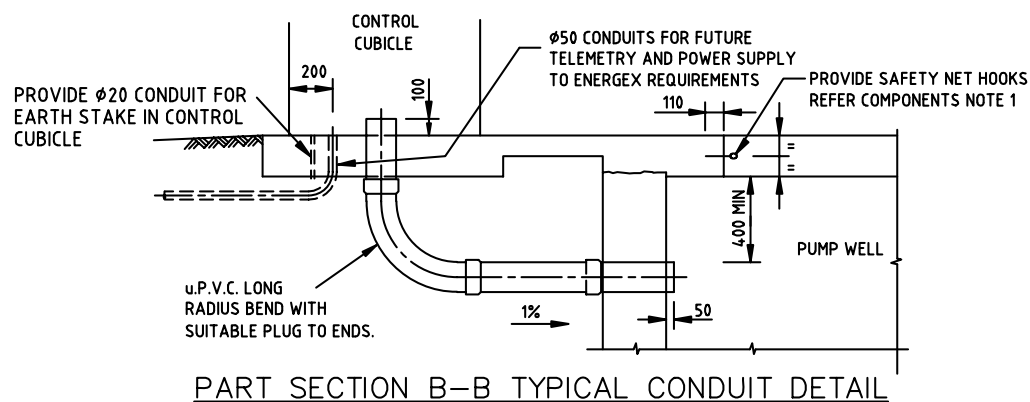
1. CONDUITS TO BE MINIMUM 63mm NOMINAL DIAMETER FOR EACH PUMP AND MINIMUM 50mm NOMINAL DIAMETER FOR CONTROL CABLES OR TWICE THE OUTSIDE DIAMETER OF THE INSTALLED CABLE WHICHEVER IS THE GREATER.
2. PUMP CONDUITS AND CONTROL CONDUIT SHALL BE SEPERATED BY A MINIMUM 300mm. PUMP CONDUITS SHALL BE SEPERATED BY 30mm.
3. CONDUITS SHALL BE INSTALLED IN ACCORDANCE WITH AS.3000.
4. CONDUITS SHALL BE IN ACCORDANCE WITH AS.2053

PIPEWORK

1. ALL UNPROTECTED PIPEWORK AND FITTINGS IN THE PUMPWELL SHALL BE COATED, REFER G.C.C.C. STANDARD SPECIFICATION SS1 FOR DETAILS
2. ALL BOLTS SHALL BE STAINLESS STEEL TO AS2837 GRADE 316.

COMPONENTS

1. ALL PIPES, FITTINGS ASSOCIATED COMPONENTS AND PROTECTION SHALL COMPLY WITH COUNCILS STANDARD SPECIFICATION SS1.



THIS DRAWING IS NOT TO BE AMENDED WITHOUT REFERENCE TO STANDARDS COMMITTEE				CONTROLLED DOCUMENT	DO NOT SCALE TAKE FIGURED DIMENSIONS ONLY
No.	AMENDMENT	APPROVED	DATE	ISSUED	

DRAWN BY	G.C.W
PASSED	08/07/08
D. HAYMAN	
APPROVED	08/07/08
R. WENT	

STANDARD DRAWING
TYPICAL SEWERAGE PUMP STATION 2100 Dia & 2400 Dia
PLAN 3 OF 3 - MISCELLANEOUS DETAILS

MICROFILMED
STANDARD DRAWING No. 08-07-130
ISSUE 2008 EDITION