

LEGEND

- TOP FACE REINFORCING
- - - - BOTTOM FACE REINFORCING
- [125] CONCRETE SLAB THICKNESS

NOTES:

1. THIS DRAWING SHOULD BE READ IN CONJUNCTION WITH G.C.C.C. STD. DWG. No's. 08-07-125 TO 08-07-127 & 08-07-131 TO 08-07-134 AND G.C.C.C STANDARD SPECIFICATIONS SS12 AND SS14.
2. THE LOCATION OF THE PUMP STATION SHALL BE AS DETAILED IN THE APPROVED DRAWINGS.
3. DIMENSIONS ARE IN MILLIMETRES UNLESS SHOWN OTHERWISE.

SIZE

1. THE PUMP STATION HAS BEEN DESIGNED FOR USE WITH PUMPS OF $\phi 200$ DISCHARGE SIZE AND THE VALVE CHAMBER TO ACCOMMODATE $\phi 300$ PIPEWORK.

LEVELS

1. UNLESS OTHERWISE APPROVED BY COUNCIL THE FINISHED LEVEL OF THE ACCESS COVERS AND CONTROL CUBICLE SHALL BE 100 ABOVE THE HIGHEST RECORDED FLOOD LEVEL. WHERE THE PUMP STATION IS SITUATED IN A FLOOD PRONE LOCATION THE LEVEL CRITERIA IS TO BE MET AND THE 1 IN 6 GRADE EXTENDED TO NATURAL.

COVERS & OPENINGS

1. PUMP STATION OPENINGS SHALL GENERALLY BE 2200 x 1600 (PUMPWELL), 950 (VALVE CHAMBER) CLEAR OPENING FITTED WITH LIGHT DUTY ACCESS COVERS AS PER G.C.C.C. STD. DWG. No. 08-07-127. (UNLESS DIRECTED OTHERWISE BY THE SUPERINTENDENT).
2. WHERE THE VOLUTE DIMENSIONS OF THE PUMP DOES NOT ALLOW 25 CLEARANCE OF THE OPENING WHEN IN THE FIXED POSITION THE DIMENSIONS OF THE PUMP STATION, OPENING AND LIDS SHALL BE AS DETAILED IN THE APPROVED DRAWINGS.

ELECTRICAL CONDUITS

1. CONDUITS TO BE MINIMUM 100mm NOMINAL DIAMETER FOR EACH PUMP AND MINIMUM 50mm NOMINAL DIAMETER FOR CONTROL CABLES OR TWICE THE OUTSIDE DIAMETER OF THE INSTALLED CABLE WHICHEVER IS THE GREATER.
2. PUMP CONDUITS AND CONTROL CONDUIT SHALL BE SEPERATED BY A MINIMUM 300mm. PUMP CONDUITS SHALL BE SEPERATED BY 30mm.
3. CONDUITS SHALL BE INSTALLED IN ACCORDANCE WITH AS.3000.
4. CONDUITS SHALL BE IN ACCORDANCE WITH AS.2053

CONSTRUCTION

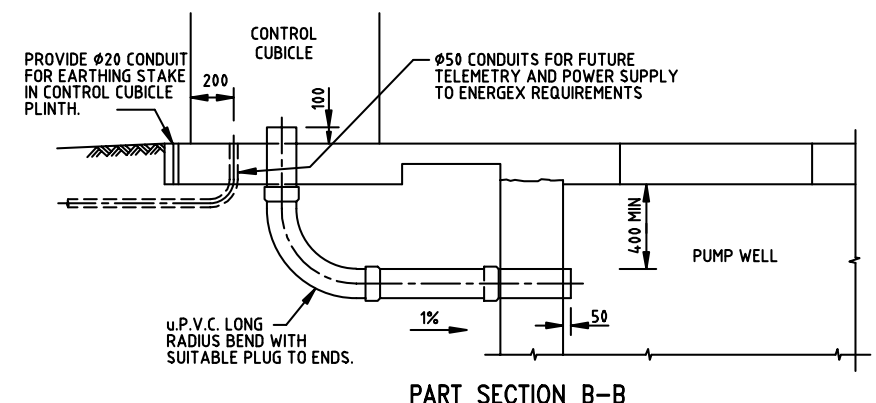
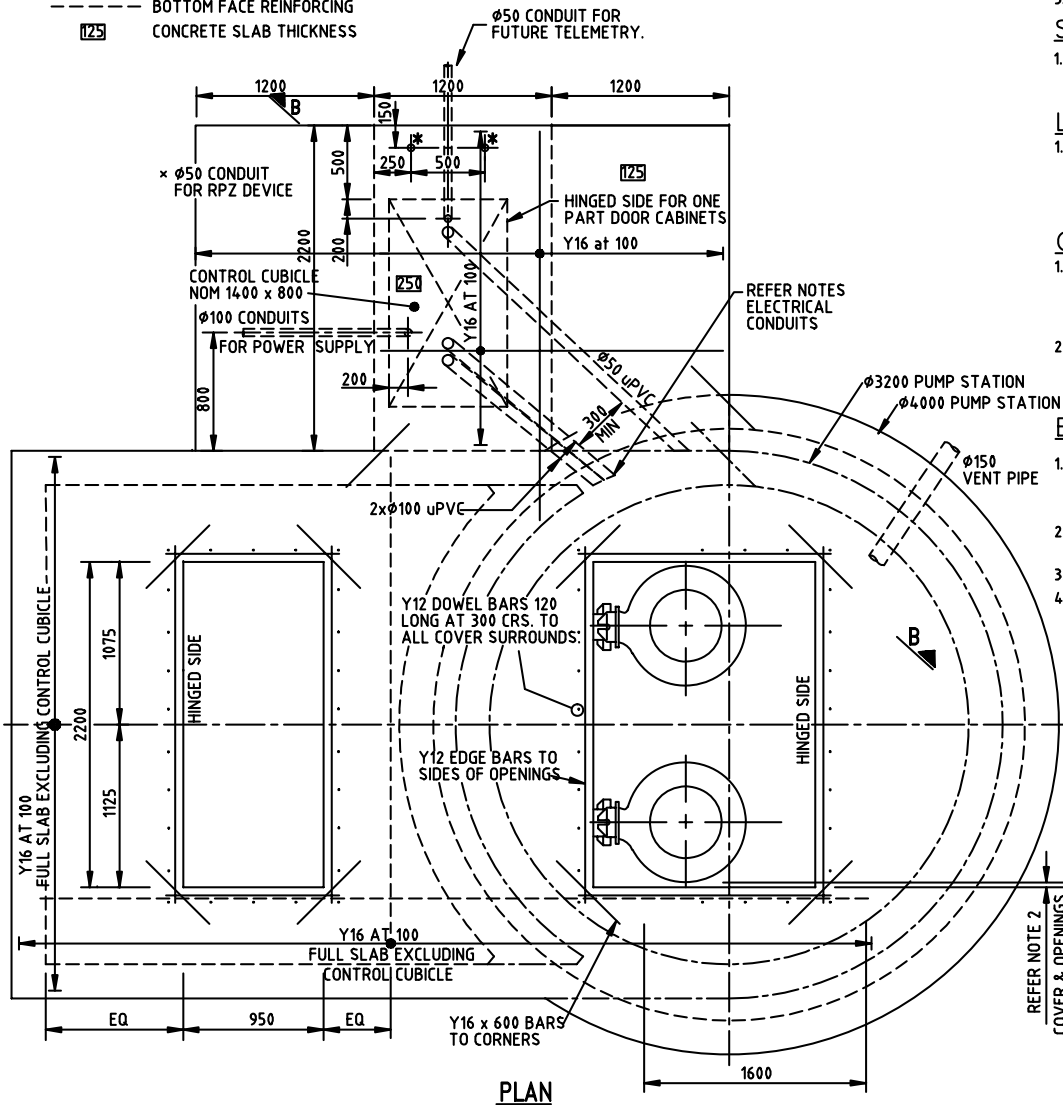
1. ALL CONCRETE SHALL:
 - (a) BE GRADE S40
 - (b) COMPLY WITH THE REQUIREMENTS OF COUNCILS STANDARD SPECIFICATION SS1.
2. CORED HOLES LEFT IN THE WALL FOR PIPEWORK SHALL BE TAPERED BEING 25 LARGER IN DIAMETER THAN THE FLANGE AT THE INSIDE FACE AND 50 LARGER AT THE OUTSIDE FACE. PACK HOLES WITH 3 : 1 CEMENT MORTAR UNLESS OTHERWISE DIRECTED.
3. STEEL WIRE FABRIC TO BE IN ACCORDANCE WITH A.S.1304.
4. STEEL REINFORCING BARS SHALL BE HIGH-TENSILE HOT-ROLLED DEFROMED BARS IN ACCORDANCE WITH A.S.1302.
5. LAPS IN REINFORCING SHALL BE 600 MINIMUM FOR BARS AND ONE (1) MESH SPACING FOR FABRIC.
6. CONCRETE COVER TO REINFORCEMENT SHALL BE A MINIMUM OF 65 UNLESS OTHERWISE DIRECTED.
7. THE VENT PIPE SHALL BE GRADED UP TO THE VENT PIPE REFER TO G.C.C.C STD DWG No. 08-07-117.
8. FOR RPZ DEVICE ONLY ONE CONDUITS REQUIRED REFER TO G.C.C.C STD DWG. No. 08-07-126.
9. ALL PUMP STATIONS SHALL BE PROVIDED WITH A PROTECTIVE COATING, REFER TO NOTES 5 & 6 ON G.C.C.C STD DWG No. 08-07-128.

PIPEWORK

1. ALL PIPEWORK AND UNPROTECTED FITTINGS IN THE PUMPWELL SHALL BE GIVEN THREE (3) EXTERNAL COATS OF AN APPROVED TAR EPOXY PAINT. TWO (2) COATS BEFORE FITTING AND THE THIRD COAT AFTER INSTALLATION.
2. ALL BOLTS SHALL BE STAINLESS STEEL TO AS2837 GRADE 316.

COMPONENTS

1. ALL PIPES, FITTINGS ASSOCIATED COMPONENTS AND PROTECTION SHALL COMPLY WITH COUNCILS STANDARD SPECIFICATION SS9.



GOLD COAST CITY COUNCIL
P.O. BOX 3342
GOLD COAST MC 9729

THIS DRAWING IS NOT TO BE AMENDED WITHOUT REFERENCE TO STANDARDS COMMITTEE			
No.	AMENDMENT	APPROVED	DATE

CONTROLLED DOCUMENT	DO NOT SCALE TAKE FIGURED DIMENSIONS ONLY
DRAWN BY	G.C.W
PASSED	D. HAYMAN 08/07/08
APPROVED	R. WENT 08/07/08

STANDARD DRAWING

TYPICAL SEWERAGE PUMP STATION 3200 Dia & 4000 Dia (SHEET 3 OF 3)

MICROFILMED
STANDARD DRAWING No. 08-07-133
ISSUE 2008 EDITION