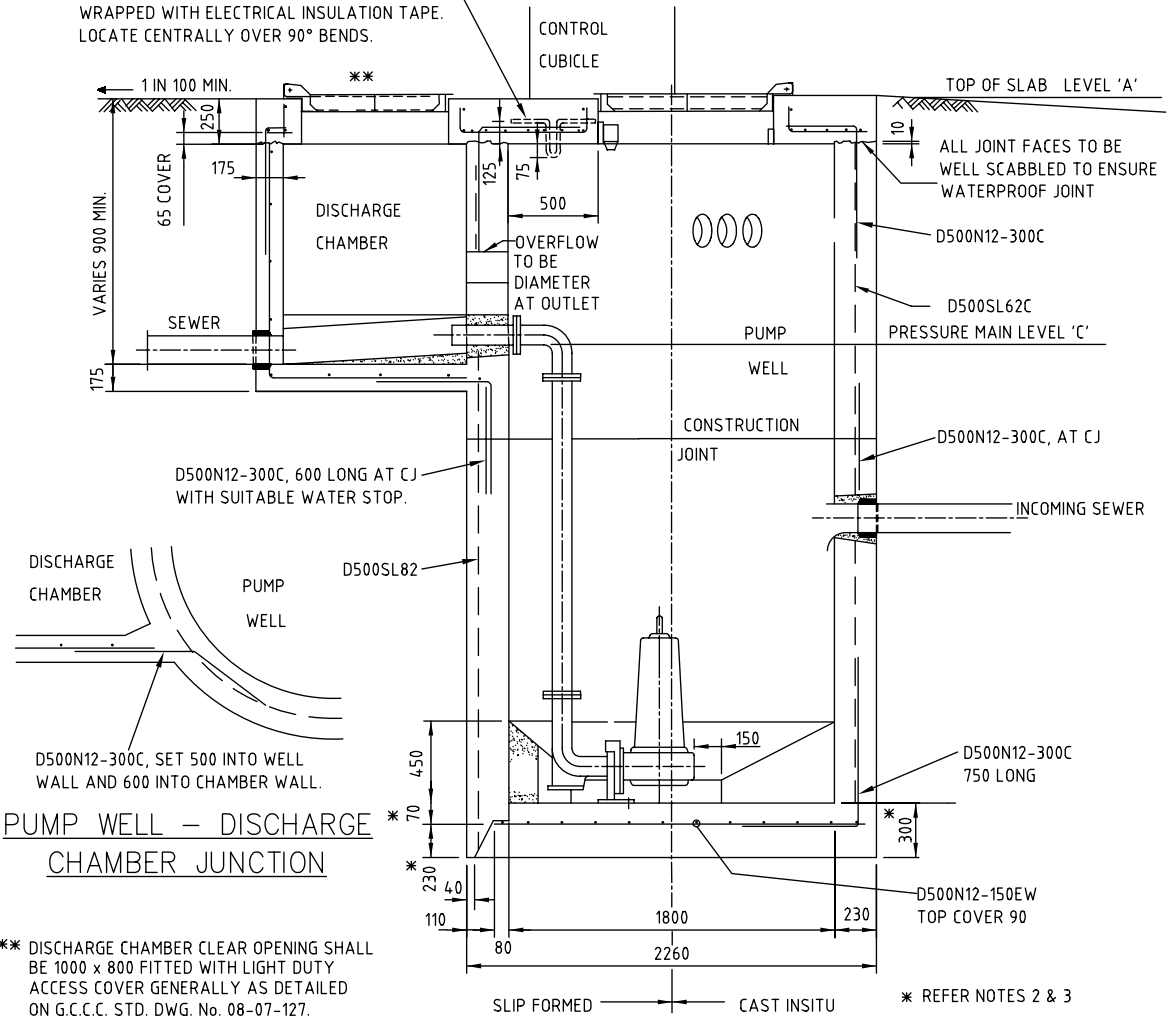


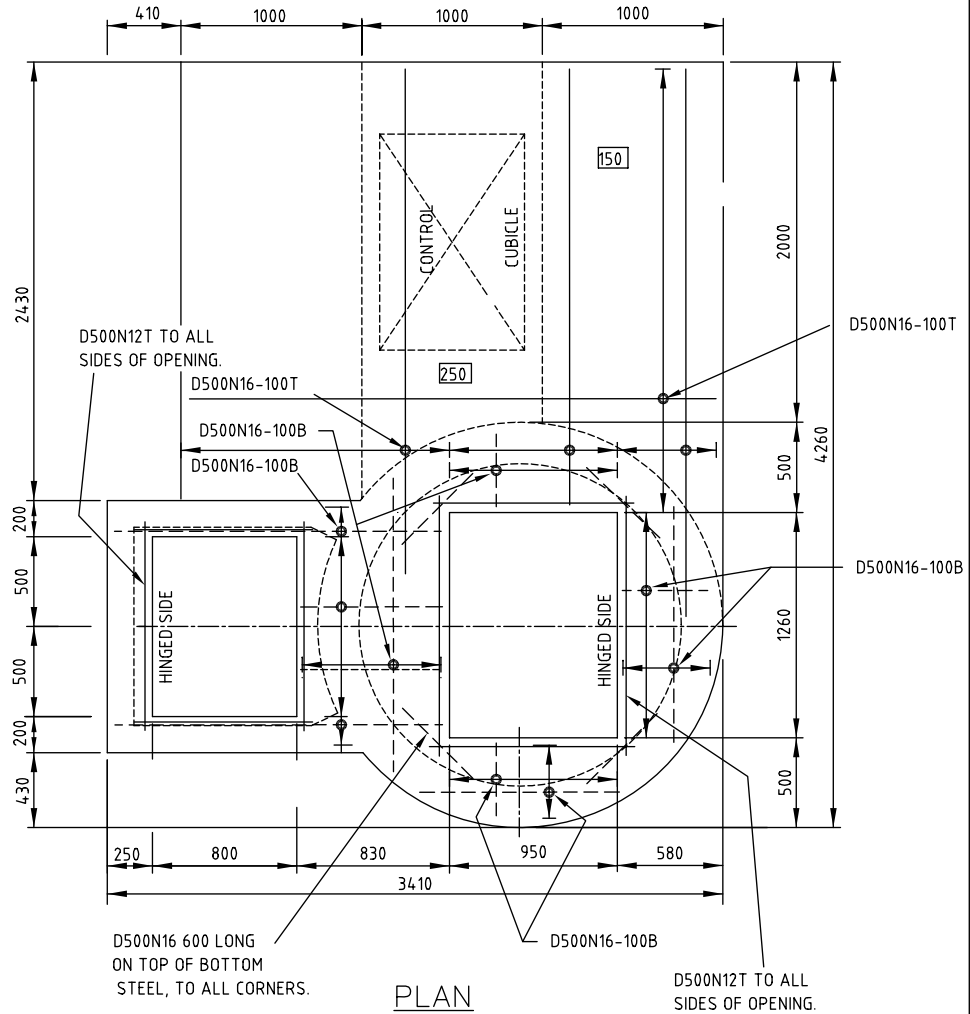
2  $\phi$ 12 GRADE 316 STAINLESS STEEL.  
INTERNAL RADIUS OF BENDS TO BE 25.  
EMBEDDED PORTION OF U-BOLTS TO BE  
WRAPPED WITH ELECTRICAL INSULATION TAPE.  
LOCATE CENTRALLY OVER 90° BENDS.



**PUMP WELL – DISCHARGE  
CHAMBER JUNCTION**

\*\* DISCHARGE CHAMBER CLEAR OPENING SHALL  
BE 1000 x 800 FITTED WITH LIGHT DUTY  
ACCESS COVER GENERALLY AS DETAILED  
ON G.C.C.C. STD. DWG. No. 08-07-127.

**SECTIONAL ELEVATION**



**PLAN**

4. ALL CONCRETE SHALL:
  - (a) BE GRADE S40
  - (b) COMPLY WITH THE REQUIREMENTS OF COUNCILS  
STANDARD SPECIFICATION SS1.
5. ALL CORED HOLES IN LIFT WELL WALLS SHALL BE TAPERED  
TO BE  $\phi$ 25 LARGER IN DIAMETER ON THE OUTSIDE FACE  
THAN THE INSIDE FACE. PACK HOLES WITH 3:1 CEMENT  
MORTAR UNLESS OTHERWISE DIRECTED.
6. ALL REINFORCING TO AS/NZS 4671:2001.
7. LAPS IN REINFORCING SHALL BE 600 MINIMUM FOR BARS AND  
ONE (1) MESH SPACING FOR FABRIC.
8. CONCRETE COVER TO REINFORCEMENT SHALL BE A MINIMUM  
65 UNLESS OTHERWISE DIRECTED.
9. DIMENSIONS ARE IN MILLIMETRES UNLESS SHOWN OTHERWISE.

**NOTES:**

1. THIS DRAWING SHOULD BE READ IN CONJUNCTION WITH  
G.C.C.C. STD. DWG. Nos. 08-07-125 TO 08-07-127  
& 08-07-136 TO 08-07-138.
2. THE THICKNESS OF THE BASE SHOWN IS FOR LIFT  
STATIONS TO A MAX. DEPTH OF 4.0m.
3. FOR DEPTHS OF LIFT STATIONS GREATER THAN 4.0m THE  
BASE THICKNESS SHALL BE INCREASED TO COVER  
FLOTATION OF THE STRUCTURE WHEN EMPTY OF PUMPS,  
PIPEWORK, FITTINGS AND LIQUID AND SHALL BE AS  
DETAILED ON THE DRAWINGS.



**Gold Coast City Council**  
GOLD COAST CITY COUNCIL  
PO BOX 5942  
GOLD COAST MC 9729

THIS DRAWING IS NOT TO BE AMENDED WITHOUT REFERENCE TO STANDARDS COMMITTEE				CONTROLLED DOCUMENT	DO NOT SCALE TAKE FIGURED DIMENSIONS ONLY
No.	AMENDMENT	APPROVED	DATE	ISSUED	

DRAWN BY	G.C.W
PASSED	D. HAYMAN 08/07/08
APPROVED	R. WENT 08/07/08

**STANDARD DRAWING**  
**SEWERAGE LIFT  
STATION 1800 Dia.**  
**PLAN 2 OF 3 - WELL CONSTRUCTION**

MICROFILMED	STANDARD DRAWING No. 08-07-136
ISSUE	2008 EDITION