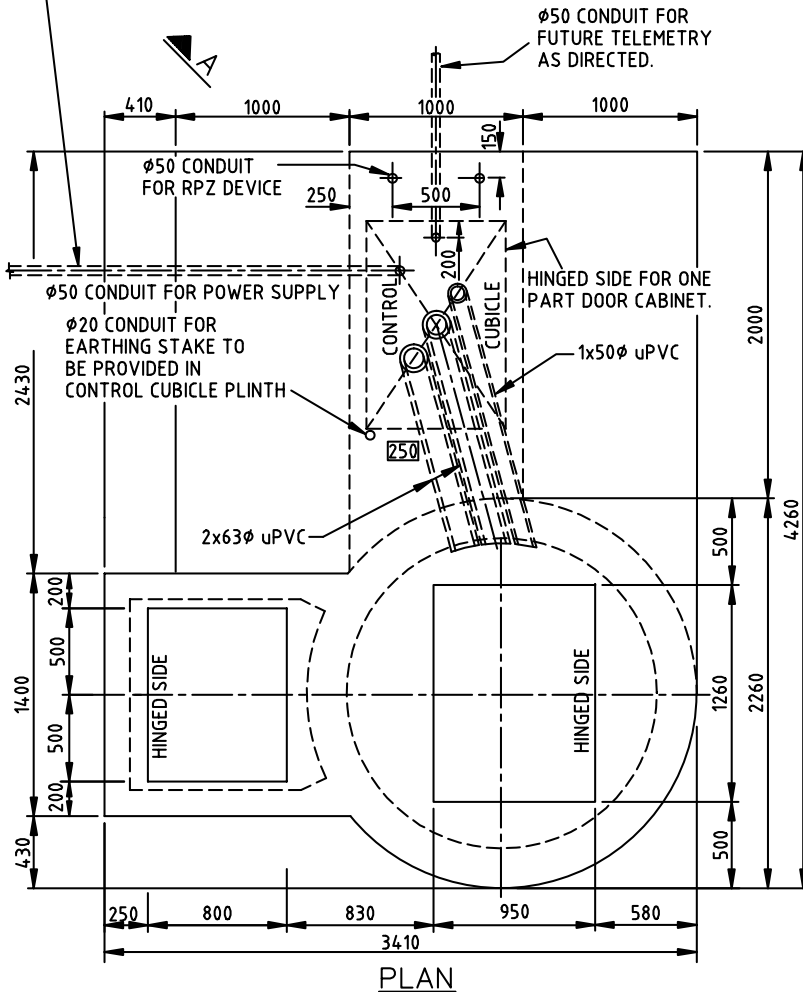
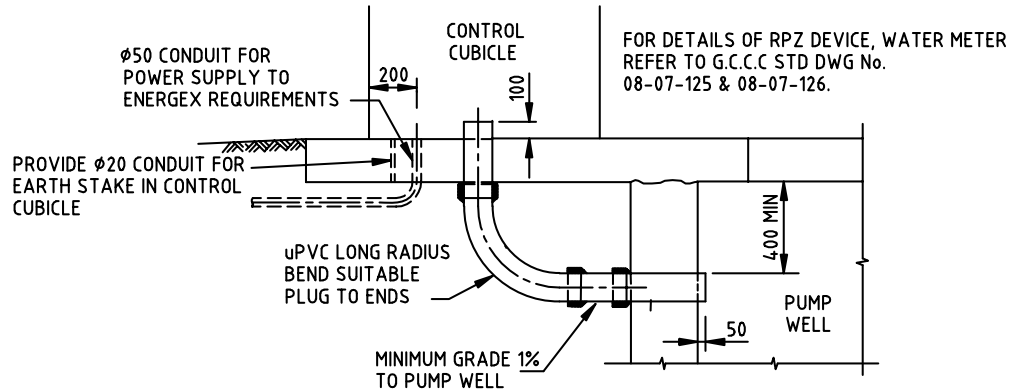


PROVIDE $\phi 50$ CONDUIT 125mm BELOW SLAB LEVEL. (POSITION TO BE DIRECTED ON SITE)



PLAN



SECTION A-A TYPICAL CONDUIT DETAIL

NOTES

GENERAL

1. THIS DRAWING SHOULD BE READ IN CONJUNCTION WITH G.C.C.C. STD. DWG. Nos. 08-07-125 TO 08-07-127 & 08-07-136 TO 08-07-138. THE LOCATION OF THE LIFT STATION SHALL BE AS SHOWN ON THE APPROVED DRAWINGS.
2. DIMENSIONS ARE IN MILLIMETRES UNLESS SHOWN OTHERWISE.

ELECTRICAL CONDUITS

1. CONDUITS TO BE MINIMUM 63mm NOMINAL DIAMETER FOR EACH PUMP AND MINIMUM 50mm NOMINAL DIAMETER FOR CONTROL CABLES OR TWICE THE OUTSIDE DIAMETER OF THE INSTALLED CABLE WHICHEVER IS THE GREATER.
2. PUMP CONDUITS AND CONTROL CONDUIT SHALL BE SEPERATED BY A MINIMUM 300mm. PUMP CONDUITS SHALL BE SEPERATED BY 30mm.
3. CONDUITS SHALL BE INSTALLED IN ACCORDANCE WITH AS.3000.
4. CONDUITS SHALL BE IN ACCORDANCE WITH AS.2053.

COMPONENTS

1. ALL PIPES, FITTINGS, ASSOCIATED COMPONENTS AND PROTECTION SYSTEMS SHALL COMPLY WITH COUNCILS STANDARD SPECIFICATION SS1.

LEVELS

1. THE FINISHED LEVEL OF THE ACCESS COVERS AND CONTROL CUBICLE SHALL BE 100 ABOVE THE HIGHEST RECORDED FLOOD LEVEL AND A 1 IN 6 GRADE EXTENDED TO NATURAL LEVEL.

PIPEWORK

1. FOR PIPEWORK DETAILS REFER TO NOTES 1, 2 & 3 ON G.C.C.C. STD. DWG. No. 08-07-130.



Gold Coast City Council
GOLD COAST CITY COUNCIL
PO BOX 5042
GOLD COAST MC 9729

THIS DRAWING IS NOT TO BE AMENDED WITHOUT REFERENCE TO STANDARDS COMMITTEE

CONTROLLED DOCUMENT

DO NOT SCALE
TAKE FIGURED DIMENSIONS ONLY

STANDARD DRAWING

MICROFILMED

DRAWN BY	G.C.W
PASSED	D. HAYMAN 08/07/08
APPROVED	R. WENT 08/07/08

**SEWERAGE LIFT
STATION 1800 Dia.
PLAN 3 OF 3 - MISCELLANEOUS DETAILS**

STANDARD DRAWING No.
08-07-137
ISSUE
2008 EDITION

No.	AMENDMENT	APPROVED	DATE	ISSUED