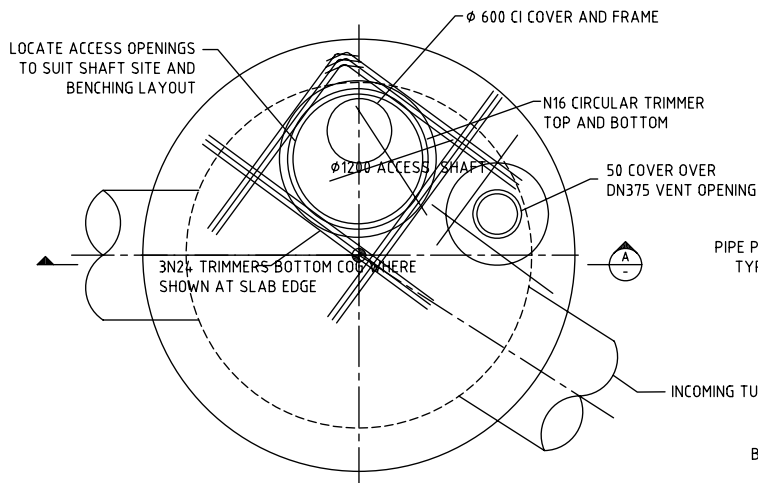
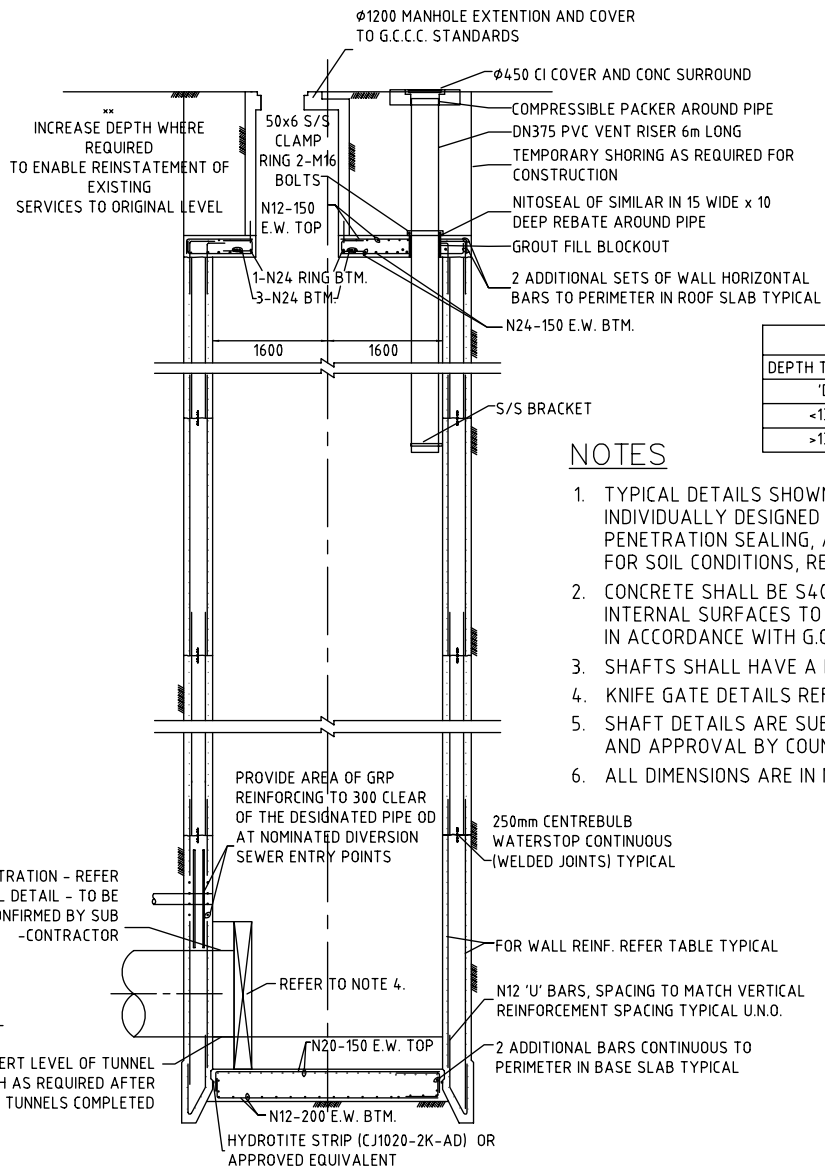


TYPICAL PIPE PENETRATION DETAIL



PLAN - RECEPTION SHAFT ROOF SLAB  
MAIN REINFORCEMENT OMITTED FOR CLARITY

⊕ DENOTES SETOUT POINT REFER TO SHAFT SITE PLANS FOR COORDINATES



SECTION A  
SCALE 1:N.T.S

WALL THICKNESS AND REINFORCING		
DEPTH TO INVERT	WALL THICKNESS	WALL REINFORCING
'D'	'T'	REINFORCING
<13m	425	N16-150 EW EF
>13m	500	N16-125 EW EF

NOTES

1. TYPICAL DETAILS SHOWN. PERMANENT WORKS SHAFTS SHALL BE INDIVIDUALLY DESIGNED FOR TRAFFIC LOADING, JACKING FORCES, PENETRATION SEALING, ANTI FLOATATION, SHAFT TOE DESIGN FOR SOIL CONDITIONS, REINFORCING STEEL AND VENTILATION.
2. CONCRETE SHALL BE S40 MINIMUM WITH 75 COVER WITH ALL INTERNAL SURFACES TO BE PROVIDED WITH A PROTECTIVE COATING IN ACCORDANCE WITH G.C.C.C SPECIFICATION SS1.
3. SHAFTS SHALL HAVE A MINIMUM DESIGN LIFE OF 100 YEARS.
4. KNIFE GATE DETAILS REFER TO G.C.C.C STD DWG No. 08-07-143.
5. SHAFT DETAILS ARE SUBJECT TO CONFIRMATION BY SUB-CONTRACTOR AND APPROVAL BY COUNCIL PRIOR TO WORKS COMMENCING.
6. ALL DIMENSIONS ARE IN MILLIMETRES.



GOLD COAST CITY COUNCIL  
PO BOX 5042  
GOLD COAST MC 9729

THIS DRAWING IS NOT TO BE AMENDED WITHOUT REFERENCE TO STANDARDS COMMITTEE

CONTROLLED DOCUMENT

DO NOT SCALE TAKE FIGURED DIMENSIONS ONLY

STANDARD DRAWING

MICROFILMED

DRAWN BY	G.C.W	08/07/08
PASSED	D. HAYMAN	08/07/08
APPROVED	R. WENT	08/07/08

TYPICAL TUNNEL JACKING SHAFT

STANDARD DRAWING No.  
08-07-141

ISSUE  
2008 EDITION

No.	AMENDMENT	APPROVED	DATE	ISSUED