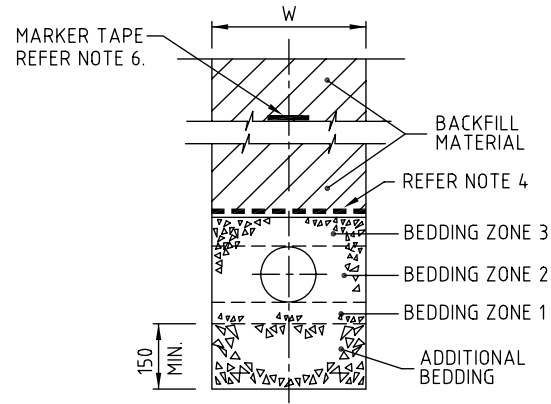
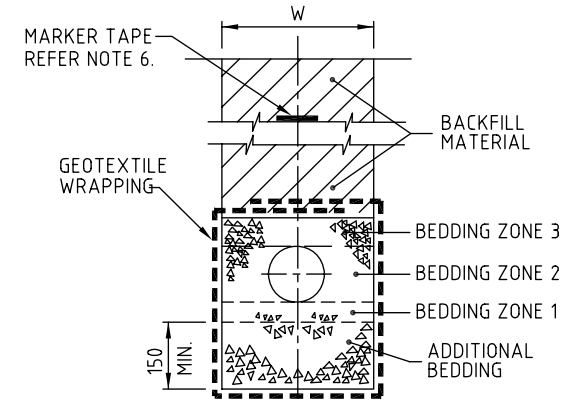


TYPE 1 CONSTRUCTION



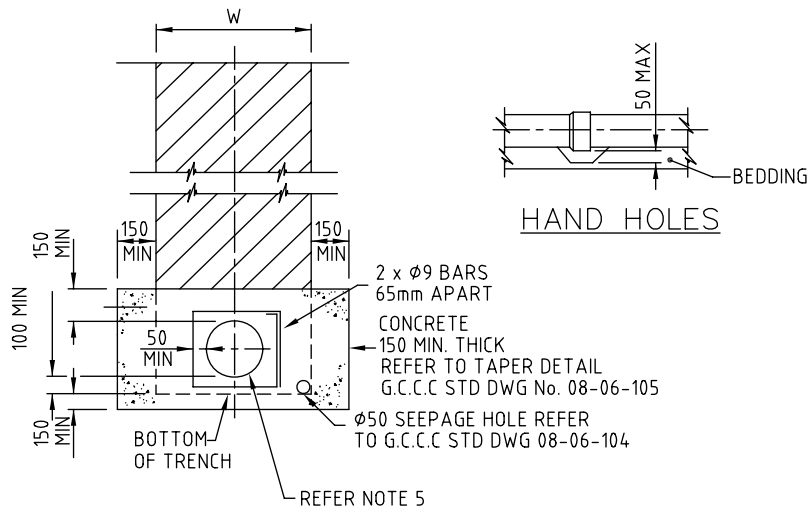
TYPE 2 CONSTRUCTION

FOR DETAILS OF BEDDING ZONES 1, 2 AND 3 REFER TO TYPE 1 CONSTRUCTION.



TYPE 3 CONSTRUCTION

FOR DETAILS OF BEDDING ZONES 1, 2 AND 3 REFER TO TYPE 1 CONSTRUCTION.



CONCRETE BULKHEADS
MAINS AND TAPERS

REFER NOTE 2

NOM DIA d	TRENCH WIDTH W
100	450
150	450
225	600
300	750
375	850
450	950
525	1050
600	1150
750	1300
900	1500
>900-1200	BY DESIGN

NOTES:

- FOR EXCAVATION, BEDDING AND BACKFILL REQUIREMENTS REFER COUNCIL'S STANDARD SPECIFICATION SS2.
- CONCRETE BULKHEADS SHALL BE LOCATED AT:-
(A) 6m INTERVALS (5.5m DICK) FOR PIPES WITH GRADES BETWEEN 15% AND 29%.
(B) WHERE GRADES EXCEED 29%, THE SPACING IN METRES, SHALL BE CALCULATED BY DIVIDING 100 BY THE GRADE (%).
(C) TAPERS
(D) THE PIPE SHALL BE PROVIDED WITH A 12 THICK COMPRESSIBLE MEMBRANE FOR THE EXTENT OF THE CONCRETE SURROUND.
- CONCRETE IN BULKHEADS IS TO BE GRADE N20.
- WHERE BACKFILL IS CLASSIFIED AS SAND (BY THE SUPERINTENDENT) A GEOTEXTILE BARRIER SHALL BE PROVIDED AT THE INTERFACE OF BEDDING ZONE 3 AND BACKFILL.
- THE PIPE SHALL BE PROVIDED WITH A 12 THICK COMPRESSIBLE MEMBRANE FOR THE EXTENT OF THE CONCRETE SURROUND.
- THE ALIGNMENT OF ALL PIPES SHALL BE MARKED BY A 75mm WIDE TAPE BURIED AT A DEPTH OF 300 MINIMUM. THE TAPE SHALL CONTAIN A CONTINUOUS METAL STRIP AND COLOURED AS APPROPRIATE.
- DIMENSIONS ARE IN MILLIMETRES UNLESS SHOWN OTHERWISE.



Gold Coast City Council
GOLD COAST CITY COUNCIL
PO BOX 5042
GOLD COAST MC 9729

THIS DRAWING IS NOT TO BE AMENDED WITHOUT REFERENCE TO STANDARDS COMMITTEE

CONTROLLED DOCUMENT

DO NOT SCALE
TAKE FIGURED DIMENSIONS ONLY

DRAWN BY	G.C.W
PASSED	D. HAYMAN 08/07/08
APPROVED	R. WENT 08/07/08

STANDARD DRAWING

**WATER PRESSURE MAIN
GENERAL TRENCH AND
BEDDING DETAILS**

MICROFILMED

STANDARD DRAWING No.
08-06-101

ISSUE
2008 EDITION

No.	AMENDMENT	APPROVED	DATE	ISSUED