

PIPE DIAMETER	300					375					450					525					600					750					900																
FITTING	90° BEND	60° BEND	45° BEND	22.5° BEND	11.25° BEND	TEE OR CLOSED END	90° BEND	60° BEND	45° BEND	22.5° BEND	11.25° BEND	TEE OR CLOSED END	90° BEND	60° BEND	45° BEND	22.5° BEND	11.25° BEND	TEE OR CLOSED END	90° BEND	60° BEND	45° BEND	22.5° BEND	11.25° BEND	TEE OR CLOSED END	90° BEND	60° BEND	45° BEND	22.5° BEND	11.25° BEND	TEE OR CLOSED END	90° BEND	60° BEND	45° BEND	22.5° BEND	11.25° BEND	TEE OR CLOSED END											
MAX THRUST IN kN	175	124	95	48	24	124	267	189	144	74	37	189	378	267	205	104	52	267	507	358	274	140	70	358	654	462	354	180	91	462	1023	723	554	282	142	723	1382	977	748	381	192	977					
THRUST BLOCK HEIGHT	700					800					900					1000					1100					1300					1500																
SOFT CLAY 50 kPa	SPECIAL DESIGN	SPECIAL DESIGN	SPECIAL DESIGN	1400	700	SPECIAL DESIGN	SPECIAL DESIGN	SPECIAL DESIGN	SPECIAL DESIGN	1850	925	SPECIAL DESIGN	SPECIAL DESIGN	SPECIAL DESIGN	SPECIAL DESIGN	2300	1160	SPECIAL DESIGN	SPECIAL DESIGN	SPECIAL DESIGN	SPECIAL DESIGN	2800	1400	SPECIAL DESIGN	SPECIAL DESIGN	SPECIAL DESIGN	SPECIAL DESIGN	3250	1650	SPECIAL DESIGN	SPECIAL DESIGN	SPECIAL DESIGN	SPECIAL DESIGN	2200	2200	SPECIAL DESIGN	SPECIAL DESIGN	SPECIAL DESIGN	SPECIAL DESIGN	2600	SPECIAL DESIGN						
FIRM CLAY SANDY LOAM 100 kPa	SPECIAL DESIGN	1800	1350	700	●	1800	SPECIAL DESIGN	2350	1800	950	●	2350	SPECIAL DESIGN	2950	2300	1150	●	2950	SPECIAL DESIGN	SPECIAL DESIGN	SPECIAL DESIGN	2750	1400	700	SPECIAL DESIGN	SPECIAL DESIGN	SPECIAL DESIGN	SPECIAL DESIGN	3200	1650	830	SPECIAL DESIGN	SPECIAL DESIGN	SPECIAL DESIGN	SPECIAL DESIGN	2200	1100	SPECIAL DESIGN	SPECIAL DESIGN	SPECIAL DESIGN	SPECIAL DESIGN	2550	SPECIAL DESIGN				
SAND & GRAVEL HARD CLAY 150 kPa	1700	1200	900	●	●	1200	2250	1600	1200	650	●	1600	2800	2000	1500	800	●	2000	SPECIAL DESIGN	2400	1800	950	●	2400	SPECIAL DESIGN	2800	SPECIAL DESIGN	3200	1650	830	2800	SPECIAL DESIGN	SPECIAL DESIGN	SPECIAL DESIGN	2200	1100	SPECIAL DESIGN	SPECIAL DESIGN	SPECIAL DESIGN	SPECIAL DESIGN	2600	SPECIAL DESIGN					
SAND & GRAVEL CEMENTED WITH CLAY 200 kPa	1250	900	700	●	●	900	1700	1200	900	●	●	1200	2100	1500	1150	●	●	1500	2550	1800	1400	700	●	1800	2970	2100	1600	850	●	2100	SPECIAL DESIGN	2800	2150	1100	●	2800	SPECIAL DESIGN	SPECIAL DESIGN	SPECIAL DESIGN	2200	1100	2800	SPECIAL DESIGN	SPECIAL DESIGN	SPECIAL DESIGN	2650	SPECIAL DESIGN
ROCK 250 kPa	1050	750	●	●	●	750	1400	1000	750	●	●	1000	1750	1250	1000	●	●	1250	2100	1500	1150	700	●	1500	2480	1750	1350	700	●	1750	3150	2250	1700	900	●	3150	SPECIAL DESIGN	2250	1700	900	●	SPECIAL DESIGN	SPECIAL DESIGN	SPECIAL DESIGN	SPECIAL DESIGN	2650	SPECIAL DESIGN

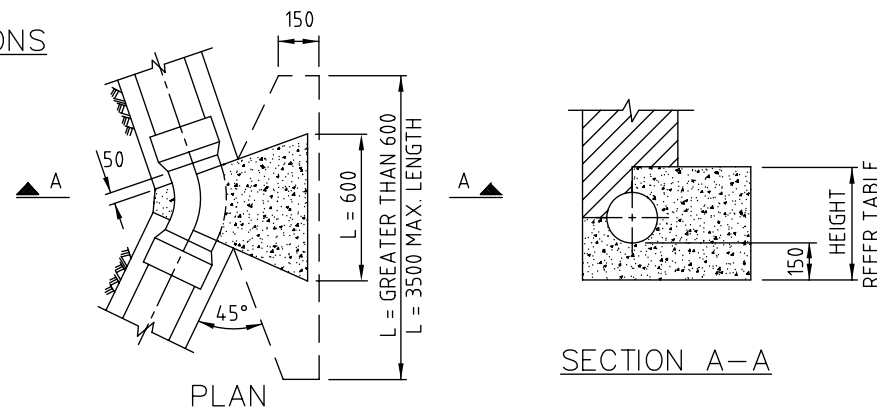
● INDICATES BLOCK LENGTH OF 600

THRUST BLOCK LENGTHS (L)

THRUST BLOCK DIMENSIONS

NOTES:

1. ALL CONCRETE TO BE GRADE N20.
2. THRUST ANCHOR BLOCKS SHALL BE CAST AGAINST THE UNDISTURBED SIDE OF THE TRENCH.
3. THE TABLE OF DIMENSIONS ASSUME A TEST PRESSURE OF 1350 kPa. (135m HEAD). VARIATION FROM THE DIMENSIONS SHOWN WILL BE SUBJECT TO JUSTIFICATION BY CALCULATIONS.
4. DIMENSIONS ARE IN MILLIMETRES UNLESS SHOWN OTHERWISE.



SECTION A-A

THIS DRAWING IS NOT TO BE AMENDED WITHOUT REFERENCE TO STANDARDS COMMITTEE

CONTROLLED DOCUMENT

DO NOT SCALE TAKE FIGURED DIMENSIONS ONLY

STANDARD DRAWING

MICROFILMED

DRAWN BY	G.C.W
PASSED	D. HAYMAN 08/07/08
APPROVED	R. WENT 08/07/08

MAJOR WATER PRESSURE MAIN THRUST BLOCK DETAILS

STANDARD DRAWING No.	08-06-106
ISSUE	2008 EDITION

No.	AMENDMENT	APPROVED	DATE	ISSUED