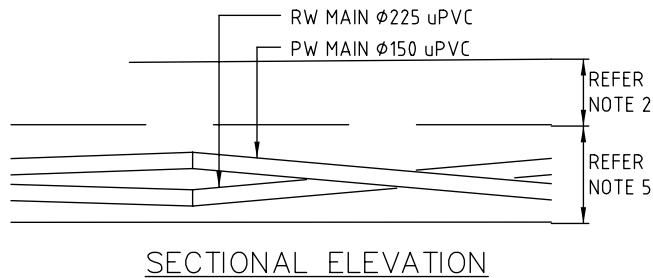


THRUST BLOCK DIMENSIONS

PIPE DIA.	FITTING	MAX. THRUST IN kN.	THRUST BLOCK HEIGHT	SOFT CLAY 50kPa.	SAND & GRAVEL SANDY LOAM 100kPa.	SAND & GRAVEL HARD CLAY 150kPa.	SAND & GRAVEL CEMENTED WITH CLAY 200kPa.
2 x 150	90° BEND	66.2	700	SD	950	650	•
	60° BEND	46.8		1350	700	•	•
	45° BEND	35.8		1050	•	•	•
	22.5° BEND	18.2		•	•	•	•
	11.25° BEND	9.2		•	•	•	•
	TEE OR CLOSED END	46.8		1350	700	•	•
2 x 200	90° BEND	117.6	800	SD	1500	1000	750
	60° BEND	83.2		SD	1050	700	•
	45° BEND	63.6		1600	800	•	•
	22.5° BEND	32.4		850	•	•	•
	11.25° BEND	16.4		•	•	•	•
	TEE OR CLOSED END	83.2		SD	1050	700	•
LARGER	BY DESIGN			BY DESIGN			
•	INDICATES BLOCK LENGTH OF 600 WITH 150 MIN. TOP & BTM. CONCRETE COVER.			L = THRUST BLOCK LENGTH			
SD	INDICATES SPECIAL DESIGN.						

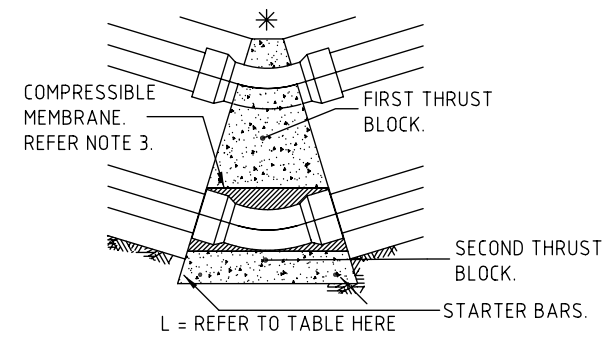
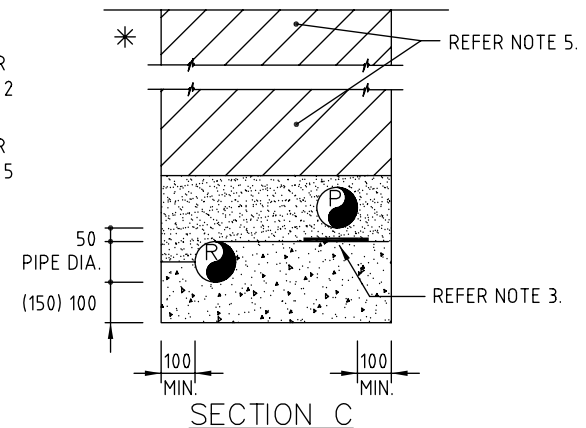
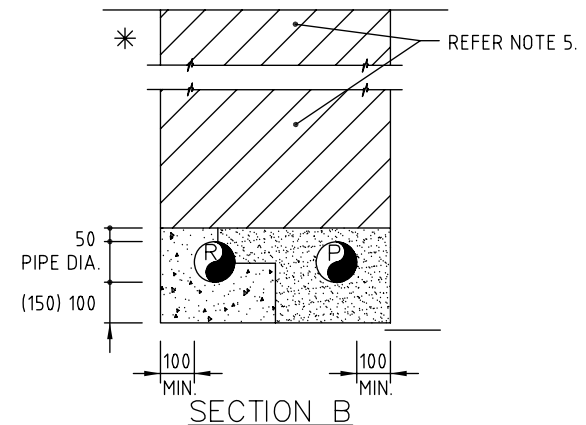
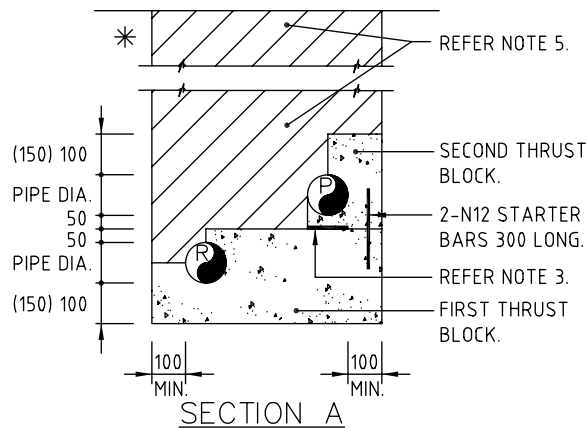
LEGEND:

- PW :- POTABLE WATER
- RW :- RECYCLED WATER
- * :- PROPERTY SIDE

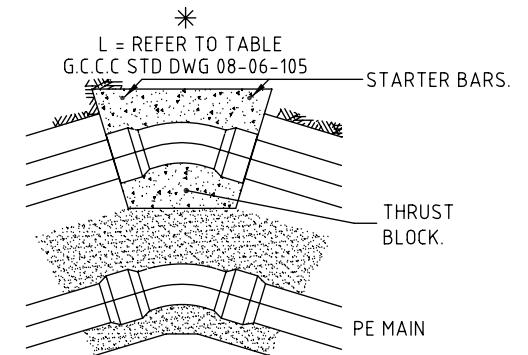


NOTES:

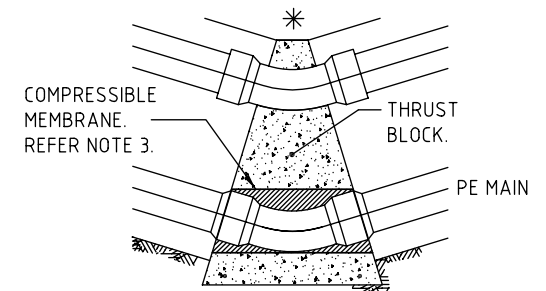
1. MAIN ON OUTSIDE OF BEND IS THE HIGHER MAIN.
2. MINIMUM PIPE COVER SHALL BE MAINTAINED.
3. COMPRESSIBLE MEMBRANE UNDER PIPES ANF FITTINGS SHALL BE 10mm THICK POLYSTYRENE.
4. DIMENSIONS ARE IN MILLIMETRES UNLESS SHOWN OTHERWISE.
5. REFER G.C.C.C. STD. DWG. No. 08-06-103 FOR TRENCH AND BEDDING DETAILS.



THRUST BLOCK DETAIL A
2 x DICL/PVC MAINS



THRUST BLOCK DETAIL B
PE & DICL/PVC MAINS



THRUST BLOCK DETAIL C
PE & DICL/PVC MAINS



Gold Coast City Council
GOLD COAST CITY COUNCIL
PO BOX 5042
GOLD COAST MC 9729

THIS DRAWING IS NOT TO BE AMENDED WITHOUT REFERENCE TO STANDARDS COMMITTEE				CONTROLLED DOCUMENT	DO NOT SCALE TAKE FIGURED DIMENSIONS ONLY
No.	AMENDMENT	APPROVED	DATE	ISSUED	DRAWN BY G.C.W
					PASSED D. HAYMAN 08/07/08
					APPROVED R. WENT 08/07/08

STANDARD DRAWING

**DUAL WATER RETICULATION SYSTEM
COMMON TRENCH THRUST
RESTRAINT**

MICROFILMED
STANDARD DRAWING No. 08-06-107
ISSUE 2008 EDITION