



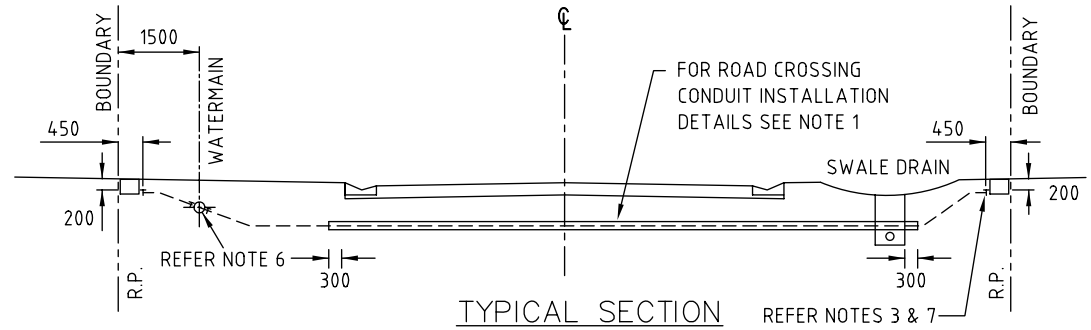
• POTABLE WATER  
SERVICE PIPE (STAINLESS STEEL)



• SERVICE CONDUIT  
(BRASS)

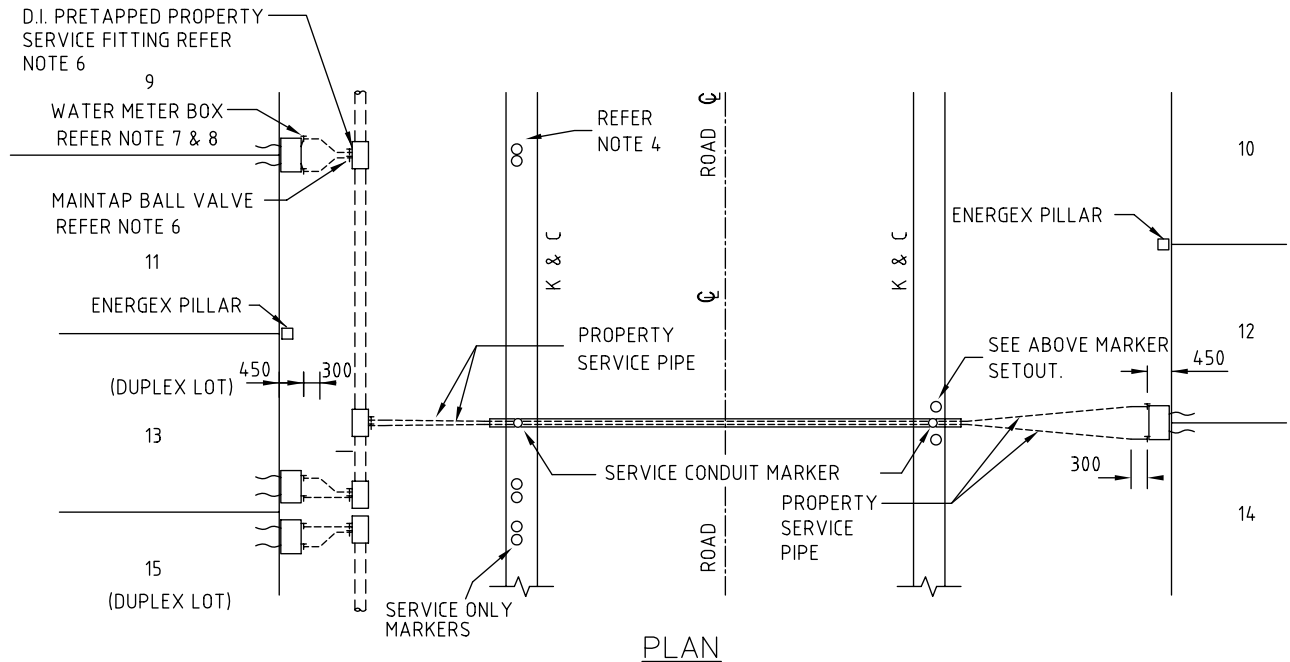


• POTABLE WATER  
SERVICE PIPE (STAINLESS STEEL)



**NOTES:**

1. FOR PROPERTY SERVICE CONDUIT, MARKER, CLASS AND INSTALLATION DETAILS REFER G.C.C.C. STD. DWG. No. 05-02-601.
2. SINGLE PROPERTY SERVICE PRESSURE PIPE SHALL BE POLYETHYLENE TO AS/NZS 4130 SERIES 1 DN25 PN16 SDR9 PE80B COLOURED BLACK WITH BLUE STRIPS. ALTERNATIVE ,REFER TO NOTE 9.
3. METER BOX INSTALLATION REFER TO G.C.C.C STD DWG 08-06-110. METER INSTALLATION APPLICATION TO BE PROVIDED TO COUNCIL BY THE CONTRACTOR.
4. PROPERTY SERVICE PIPE STAMPED IDENTIFICATION TAG (35 MIN DIA) SHALL BE STAINLESS STEEL RETAINED BY A STAINLESS STEEL PIN.
5. PROPERTY SERVICE PIPE, BALL VALVES, DUCTILE IRON PRE-TAPPED PROPERTY SERVICE FITTING AND ASSOCIATED FITTINGS SHALL BE JOINTED IN ACCORDANCE WITH THE MANUFACTURERS RECOMMENDATIONS.
6. THE MAIN TAP BALL VALVE SHALL BE LEFT IN THE FULLY OPEN POSITION.
7. THE WATER METER BALL VALVE WITHIN BOX SHALL BE LEFT IN THE FULLY CLOSED POSITION.
8. THE PROPERTY SERVICE PIPE SHALL BE PERPENDICULAR TO THE FRONT RP BOUNDARY FOR THE LAST 300 OF THE PIPE.
9. TWIN PROPERTY SERVICE PRESSURE PIPE TO A MAXIMUM LENGTH OF 20 METRES SHALL BE POLYETHYLENE TO AS/NZS 4130 SERIES 1 DN32 PN16 SDR9 PE80B. TWIN SERVICES OVER 20 METRES LONG SHALL BE A SINGLE SERVICE. REFER TO NOTE 2. WHERE A TWIN SERVICE IS PROVIDED THEN THE MAIN TAP BALL VALVE SHALL BE DN20. THE SERVICE SHALL BE DOWNSIZED FROM DN32 TO DN25 OR FOLLOWING THE SPLITTER TEE.
10. DIMENSIONS ARE IN MILLIMETRES UNLESS SHOWN OTHERWISE.



**Gold Coast City Council**  
GOLD COAST CITY COUNCIL  
PO BOX 5042  
GOLD COAST MC 9729

THIS DRAWING IS NOT TO BE AMENDED WITHOUT  
REFERENCE TO STANDARDS COMMITTEE

CONTROLLED  
DOCUMENT

DO NOT SCALE  
TAKE FIGURED DIMENSIONS ONLY

**STANDARD DRAWING**

MICROFILMED

DRAWN BY  
G.C.W

**TRADITIONAL POTABLE ARRANGEMENT  
TYPICAL PROPERTY  
SERVICE INSTALLATION**

STANDARD  
DRAWING No.  
08-06-108

PASSED  
D. HAYMAN 08/07/08

ISSUE  
2008 EDITION

APPROVED  
R. WENT 08/07/08

No.	AMENDMENT	APPROVED	DATE	ISSUED