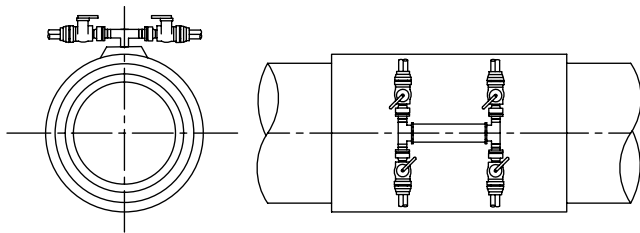


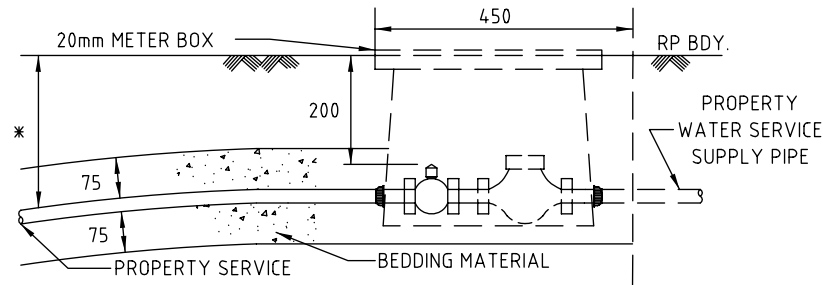
PRETAPPED CONNECTOR (DI)

(FOR DN 100 - DN 150 PVC & DI PIPES)



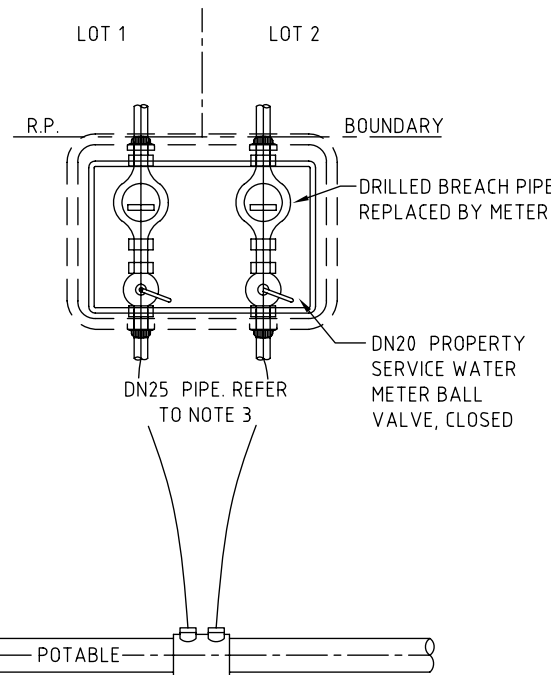
PRETAPPED TWIN CONNECTOR (DI)

(FOR DN 200+ PIPES SINGLE PORT)

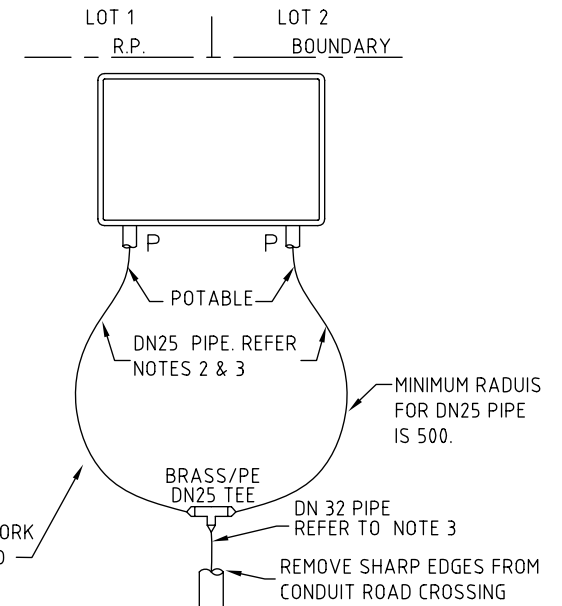


TYPICAL 20mm WATER METER

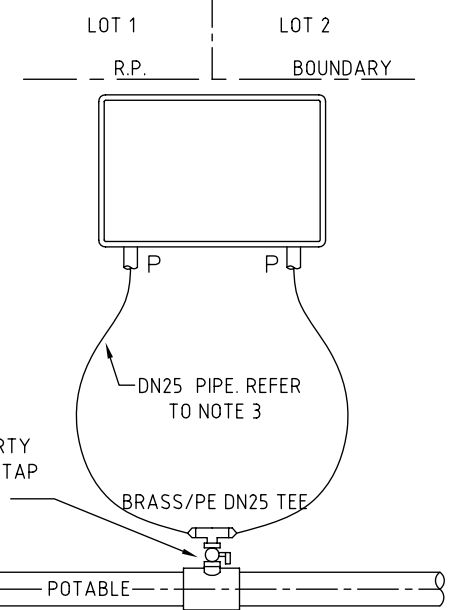
* GRADE DOWN TO MAIN



SEPARATE SHORT SERVICES



COMBINED LONG SERVICES



COMBINED SHORT SERVICES

NOTES:

1. FOR SINGLE PROPERTY SERVICE AND GENERAL PROPERTY SERVICE INSTALLATION DETAILS REFER TO G.C.C.C. STD. DWG. NO. 08-06-108.
2. FOR DUAL RETICULATION WATER SERVICE TYPICAL INSTALLATION DETAILS REFER G.C.C.C. STD DWG. No. 08-06-109.
3. FOR PROPERTY SERVICE PIPE DETAILS REFER TO NOTE 2 & 9 AND THE GENERAL DETAILS ON G.C.C.C. STD DWG No. 08-06-108.
4. FOR POTABLE PROPERTY SERVICE PRESSURE PIPE COLOURS AND MARKING DETAILS REFER TO G.C.C.C. STD. DWG. NO. 08-06-108.
5. DIMENSIONS ARE IN MILLIMETRES UNLESS SHOWN OTHERWISE.



Gold Coast City Council
GOLD COAST CITY COUNCIL
PO BOX 5042
GOLD COAST MC 9729

THIS DRAWING IS NOT TO BE AMENDED WITHOUT REFERENCE TO STANDARDS COMMITTEE				CONTROLLED DOCUMENT	DO NOT SCALE TAKE FIGURED DIMENSIONS ONLY
No.	AMENDMENT	APPROVED	DATE	ISSUED	DRAWN BY G.C.W
					PASSED D. HAYMAN 08/07/08
					APPROVED R. WENT 08/07/08

STANDARD DRAWING

**TRADITIONAL RETICULATION SYSTEM
TYPICAL WATER PRESSURE MAIN
SERVICE DETAILS**

MICROFILMED	STANDARD DRAWING No. 08-06-110
ISSUE	2008 EDITION