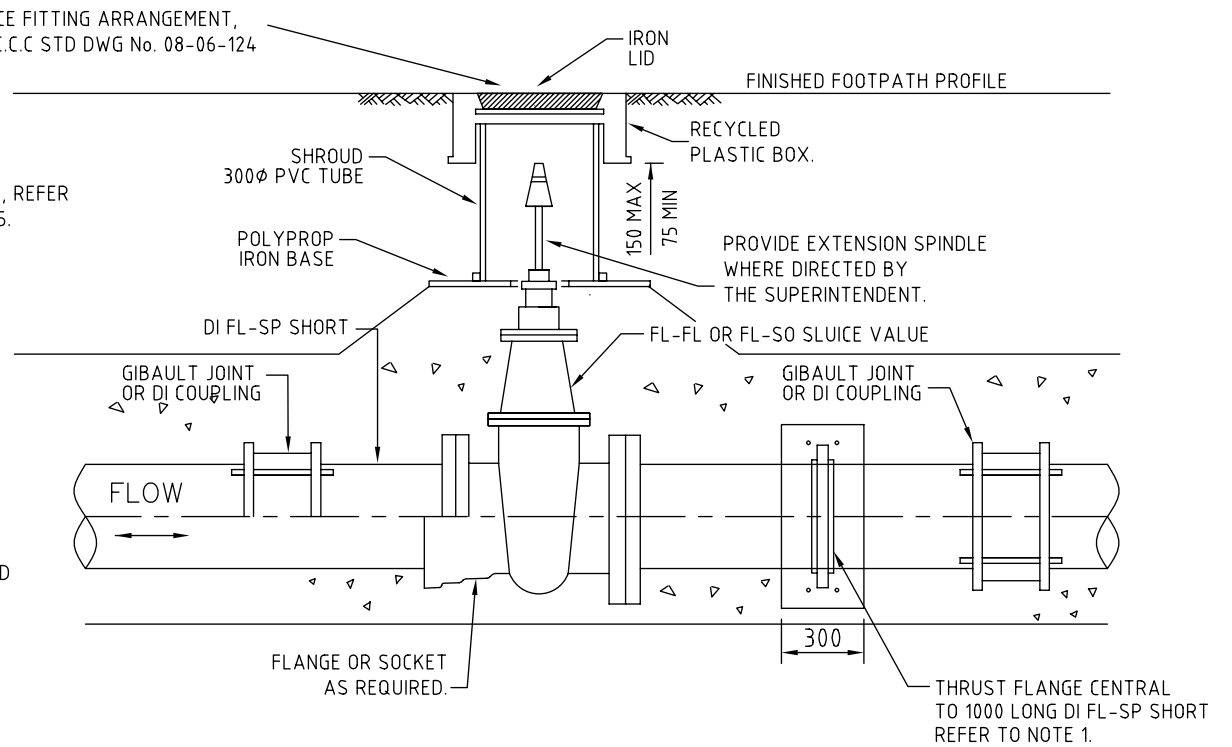


SOCKETED SLUICE VALVES

< 300 ϕ
 (NO PVC SOCKET SHALL BE JOINED TO ANY DI SPIGOT).



FLANGED SLUICE VALVE

< 375 ϕ
 (NO PVC SOCKET SHALL BE JOINED TO ANY DI SPIGOT).

NOTES:

1. THRUST DETAILS SHOWN ARE FOR DN 100 PIPE FOR OTHER SIZES REFER TO G.C.C.C STD DWG No. 08-06-105.
2. THRUST BLOCK REINFORCEMENT AS SPECIFIED IN DESIGN DRAWINGS.
3. INSTALL PUDDLE FLANGES ON FLANGE CLASS DI CL PIPE.
4. SOC-SOC VALVES THRUST AREA TO BE AS FOR CLOSED ENDS AS SHOWN IN G.C.C.C. STD DWG Nos. 08-06-105 AND 08-06-106.
5. FLANGED SHORTS MAY BE SPIGOTED OR SOCKETED.
6. WHERE DI PIPES AND FITTINGS WITH RESTRAINED JOINTS AND PIPE SYSTEM IS USED, THRUST BLOCKS ARE NOT REQUIRED. SEE WSAA NATIONAL CODE DWG WAT-1208 FOR DETAILS.
7. VALVE ANCHOR BLOCKS TO BE SIZED FOR A TEST PRESSURE OF 1350 KPa
8. FOR SURFACE BOX DETAILS REFER G.C.C.C. STD DWG 08-06-125.
9. DIMENSIONS ARE IN MILLIMETERS UNLESS SHOWN OTHERWISE.



Gold Coast City Council
 GOLD COAST CITY COUNCIL
 PO BOX 5042
 GOLD COAST MC 9729

THIS DRAWING IS NOT TO BE AMENDED WITHOUT REFERENCE TO STANDARDS COMMITTEE

CONTROLLED DOCUMENT

DO NOT SCALE
 TAKE FIGURED DIMENSIONS ONLY

STANDARD DRAWING

MICROFILMED

DRAWN BY	G.C.W
PASSED	D. HAYMAN 08/07/08
APPROVED	R. WENT 08/07/08

**RETICULATION SYSTEM
 SLUICE VALVE DETAILS**

STANDARD DRAWING No.	08-06-112
ISSUE	2008 EDITION

No.	AMENDMENT	APPROVED	DATE	ISSUED