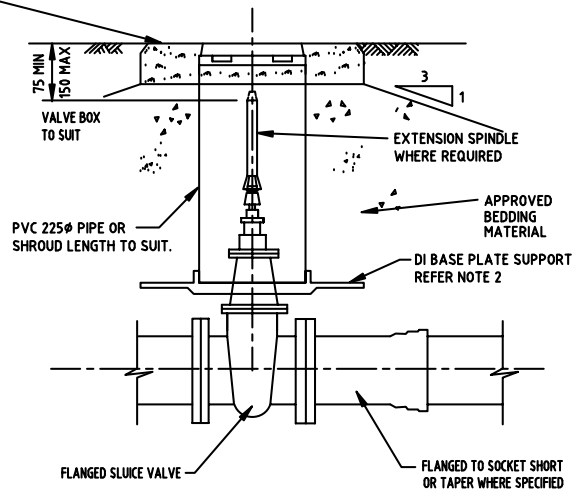
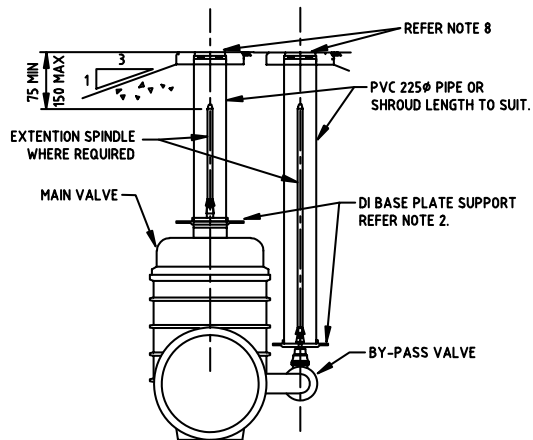


FLANGED SLUICE VALVE AT TEE

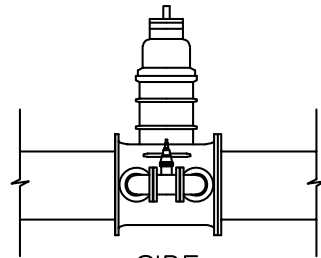


FLANGED SLUICE VALVE ONLINE

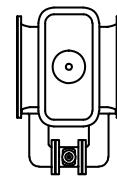
(THRUST RESTRAINT BY DESIGN)



FRONT



SIDE



PLAN

DN 600 AND LARGER SLUICE VALVE WITH BY-PASS ARRANGEMENT

NOTES:

1. SLUICE VALVES DN 600 AND LARGER SHALL BE BY-PASS ARRANGEMENT APPROVED BY COUNCIL.
2. TO PREVENT THE TRANSFER OF TRAFFIC LOAD TO THE MAIN ENSURE BASE PLATE / SHROUD SUPPORT RING SHALL NOT COME IN CONTACT WITH THE SLUICE VALVE AND MAIN.
3. ALL FLANGES SHALL BE DRILLED IN ACCORDANCE AS4087 - FIGURE B5.
4. BY - PASS MAIN VALVE GEARBOX TO SUIT TYPE OF OPERATION AND PRESSURE HEAD.
5. GEARBOX AND / OR ACTUATORS SHALL COMPLY WITH STANDARD SPECIFICATION SS14.
6. ALL VALVES SHALL BE ANTI-CLOCKWISE IN CLOSING.
7. WHERE GEARBOXES USED, VALVE PITS SHALL BE INSTALLED IN ACCORDANCE WITH G.C.C.C STD DWG 08-06-116.
8. COLOUR CODE FOR BY-PASS VALVE ARRANGEMENT IS MAIN VALVE COVER - WHITE AND BY-PASS VALVE COVER - GREEN.
9. DIMENSIONS ARE IN MILLIMETRES UNLESS SHOWN OTHERWISE.

BY-PASS ARRANGEMENT DN SIZE

MAIN VALVE NOMINAL SIZE DN	BY-PASS VALVE NOMINAL SIZE DN	
	MINIMUM	MAXIMUM
DN 600	DN 80	DN 100
DN 750	DN 100	DN 150



THIS DRAWING IS NOT TO BE AMENDED WITHOUT REFERENCE TO STANDARDS COMMITTEE

No.	AMENDMENT	APPROVED	DATE	ISSUED

CONTROLLED DOCUMENT

DO NOT SCALE TAKE FIGURED DIMENSIONS ONLY

DRAWN BY	G.C.W
PASSED	D. HAYMAN 08/07/08
APPROVED	R. WENT 08/07/08

STANDARD DRAWING

**TRUNK SYSTEM
Ø375 TO Ø1200
SECTION SLUICE VALVE**

MICROFILMED

STANDARD DRAWING No.	08-06-115
ISSUE	2008 EDITION