

**S.S. STUD**  
 MATERIAL : AS.2837.  
 GRADE 316  
 STAINLESS STEEL

**INSULATING BUSH**  
 MATERIAL : HYPALON COMPOUND  
 HL 8014 OR SIMILAR  
 TOLERANCE : ±0.4  
 SHORE HARDNESS : 80 MIN.

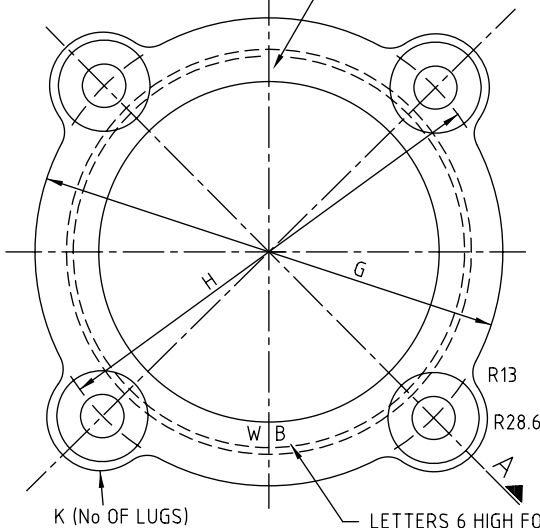
**NOTES:**

- GIBAULT JOINTS SHALL BE PROPRIETARY PRODUCTS APPROVED BY COUNCIL.
- EACH GIBAULT JOINT TO BE SUPPLIED ASSEMBLED, AND SHALL CONSIST OF :-  
 2 x DUCTILE IRON FLANGES.  
 1 x DUCTILE IRON SLEEVE.  
 2 x RUBBER RINGS &  
 THE REQUIRED NO. OF STAINLESS STEEL STUDS (E)  
 EACH STUD SHALL BE SUPPLIED WITH A MINIMUM OF  
 2 x 5/8" UNC (OR METRIC EQUIVALENT) NUTS.  
 2 x 42x3 WASHERS &  
 2 x INSULATING BUSHES.

STUDS, NUTS AND WASHERS SHALL BE MANUFACTURED TO AS.2837 GRADE 316 STAINLESS STEEL IN THE ANNEALED CONDITION.

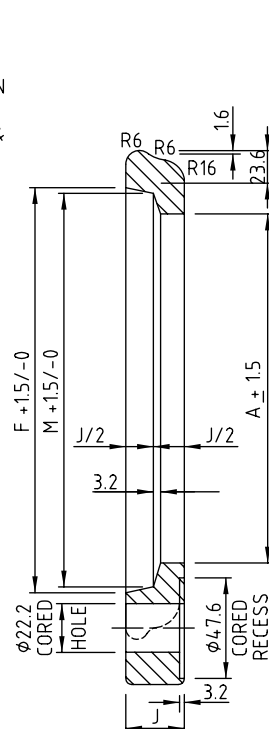
- PROTECTIVE COATING :- FLANGES AND SLEEVES SHALL BE COATED WITH AN APPROVED F.B.C. TO AS/NZS 4158.
- BUSHES SHALL BE BONDED TO FLANGES PRIOR TO ASSEMBLY.
- THE MANUFACTURE, FINISH AND TESTING OF THE DUCTILE IRON FLANGES AND SLEEVES SHALL BE IN ACCORDANCE WITH AS.2280.
- TOLERANCES ON DUCTILE IRON COMPONENTS TO BE IN ACCORDANCE WITH AS.2280. (WHERE APPLICABLE) UNLESS OTHERWISE SPECIFIED THE MAXIMUM TOLERANCE ON DIMENSIONS TO BE ± 0.3.
- THE THREADS OF BOTH ENDS OF THE STAINLESS STEEL STUDS ARE TO AS FORMED AT THE "THREAD ROLLING" METHOD. OVERALL LENGTH OF STUDS TO BE 330. (ALL DIAMETERS)
- GIBAULT JOINT FITTINGS SHALL BE MARKED WITH THE MANUFACTURERS NAME, NOMINAL SIZE OF FITTING AND THE WORDS "DUCTILE IRON" OR "D.I." TO BE MOULDED ON EACH CASTING WITH CLEARLY LEGIBLE LETTERS.
- DEFLECTION OF JOINT IN ANY DIRECTION SHALL BE :- FOR Ø100 TO Ø300 = 5° MAXIMUM.
- DIMENSIONS ARE IN MILLIMETRES UNLESS SHOWN OTHERWISE.

**SLEEVE**  
 PRESSURE RATING TO BE CAST ON FLANGE IN POSITION INDICATED IN NUMERALS 6 HIGH FOR 100 & 150 & 12 HIGH FOR 200 - 600 INCLUSIVE

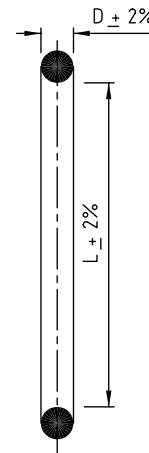


**FLANGE**

LETTERS 6 HIGH FOR 100 & 150 & 12 FOR 200 - 600 INCLUSIVE TO BE CAST IN POSITION INDICATED.



**SECTION A-A**



**RUBBER RING**  
 MATERIAL : RUBBER RING  
 IN ACC WITH AS.1646.  
 SHORE HARDNESS 45±5

NOM. DIA.	DIMENSIONS													TOTAL MASS (KG) FULLY ASSEMBLED INCL CONC LINING	SAFE HEAD (M)
	A	B	C	D	E	F	G	H	J	K	L	M	N		
100	126.5	146.8	10.2	6.4	229	155.2	190.5	190.5	28.7	3	104.6	148.3	16.0	17	182
150	182.9	207.8	12.4	6.4	229	217.4	251.0	251.0	35.1	3	155.4	209.3	16.0	26	182
225	264.7	295.1	15.2	9.7	229	311.7	346.2	349.3	35.1	5	247.7	296.7	20.6	45	182
300	351.0	386.1	17.5	12.7	229	406.9	454.2	454.2	35.1	8	333.5	387.6	22.4	76	182



**Gold Coast City Council**  
 GOLD COAST CITY COUNCIL  
 PO BOX 5942  
 GOLD COAST MC 9729

THIS DRAWING IS NOT TO BE AMENDED WITHOUT REFERENCE TO STANDARDS COMMITTEE

CONTROLLED DOCUMENT

DO NOT SCALE  
 TAKE FIGURED DIMENSIONS ONLY

DRAWN BY	G.C.W
PASSED	D. HAYMAN 08/07/08
APPROVED	R. WENT 08/07/08

**STANDARD DRAWING**

**GIBAULT JOINTS FOR  
 PVC & DUCTILE IRON PIPES**

MICROFILMED

STANDARD DRAWING No.  
 08-06-128

ISSUE  
 2008 EDITION

No.	AMENDMENT	APPROVED	DATE	ISSUED