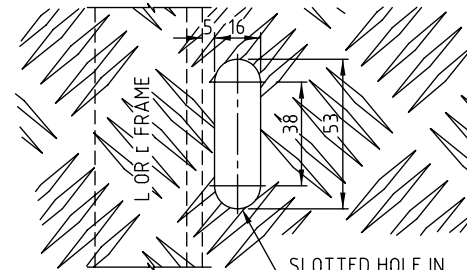


PLAN - COVERS IN PLACE

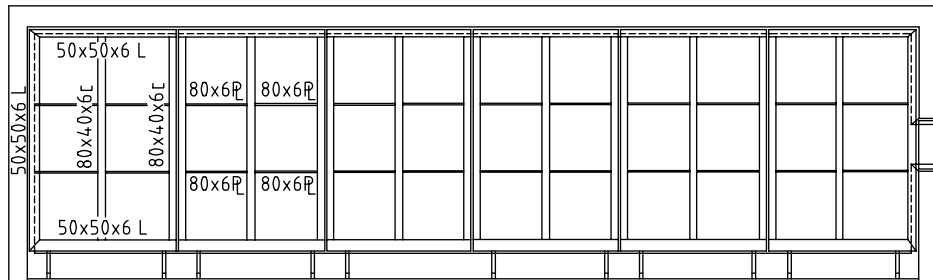


LIFTING SLOT DETAIL

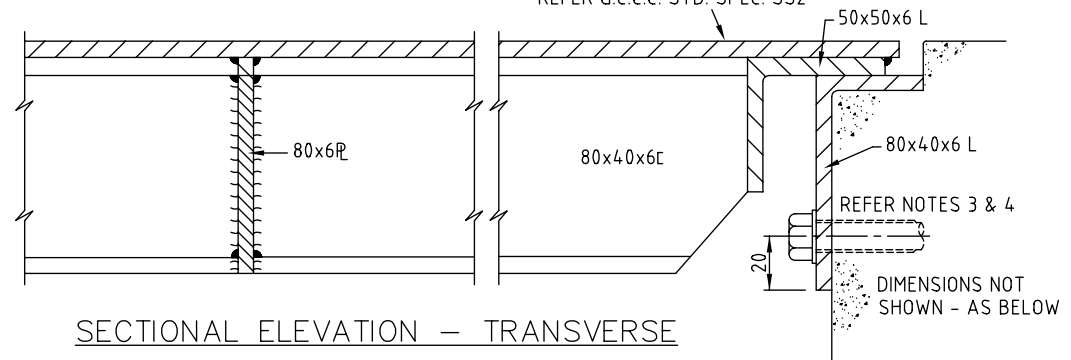
NOTES:

1. ALL COMPONENTS SHALL BE ALLUMINIUM ALLOY 6061-T1 UNLESS SHOWN OTHERWISE
2. ALL CONNECTIONS SHALL BE WELDED WITH 6mm CONTINUOUS FILLET OR FULL STRENGTH BUTT WELDS UNLESS SHOWN OTHERWISE
3. ISOLATE FASTENERS FROM FRAME AND CONCRETE STRUCTURE WITH A BITUMINOUS PAINT TO BOLT SHANK AND TO FRAME.
4. M10 STAINLESS STEEL DROP IN FLUSH ANCHOR MASONRY FASTENERS TO BE POSITIONED AS DETAILED
5. DIMENSIONS ARE IN MILLIMETRES UNLESS SHOWN OTHERWISE.

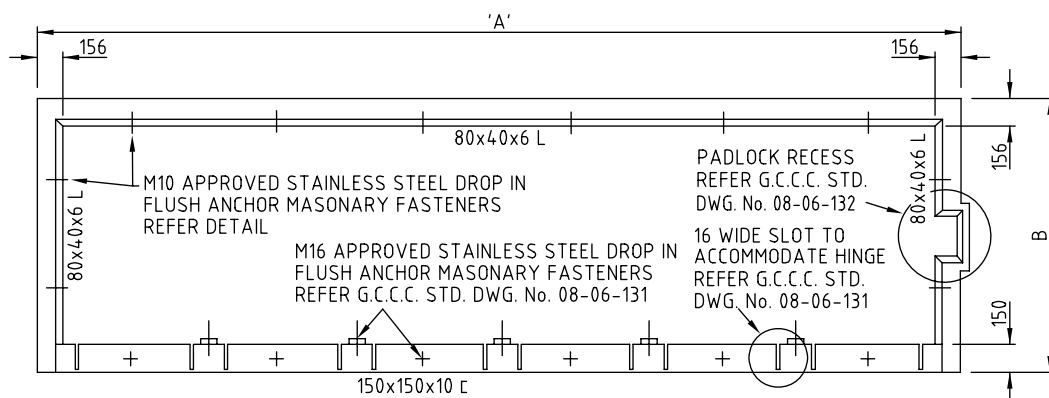
6 THICK CHEQUER PLATE WITH ANTI SLIP COATING TO EXTERNAL SURFACES, REFER G.C.C.C. STD. SPEC. SS2



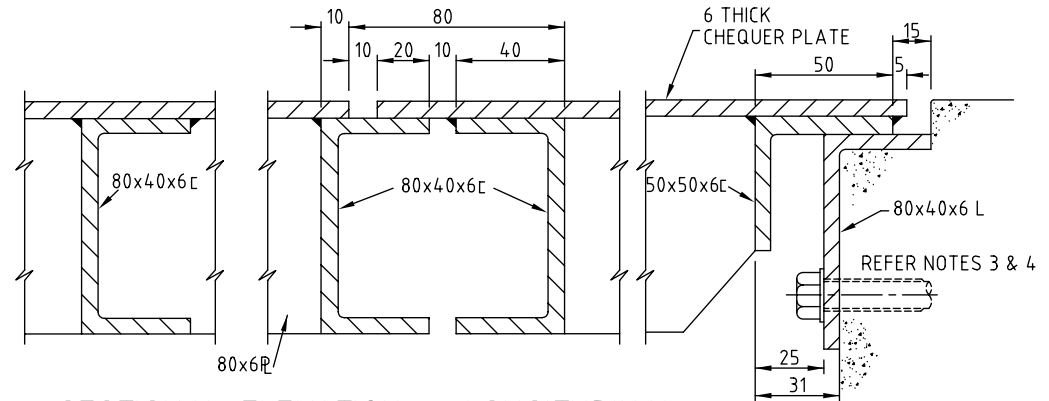
TYPICAL PLAN - COVER FRAMES



SECTIONAL ELEVATION - TRANSVERSE



EXTERNAL FRAME



SECTIONAL ELEVATION - LONGITUDINAL

COVER DETAILS



Gold Coast City Council
GOLD COAST CITY COUNCIL
PO BOX 5042
GOLD COAST MC 9729

THIS DRAWING IS NOT TO BE AMENDED WITHOUT REFERENCE TO STANDARDS COMMITTEE

CONTROLLED DOCUMENT

DO NOT SCALE
TAKE FIGURED DIMENSIONS ONLY

STANDARD DRAWING

MICROFILMED

DRAWN BY	G.C.W
PASSED	D. HAYMAN 08/07/08
APPROVED	R. WENT 08/07/08

**WATER SUPPLY
PUMP STATION
PLAN 2 OF 4**

STANDARD DRAWING No.	08-06-130
ISSUE	2008 EDITION

No.	AMENDMENT	APPROVED	DATE	ISSUED