

M16 APPROVED STAINLESS STEEL DROP IN FLUSH ANCHOR MASONRY FASTENERS POSITIONED AS SHOWN. REFER NOTE 3.

Ø16 S.S. HINGE BOLT COMPLETE WITH S.S. WASHERS AGAINST BOLT HEAD, NUT AND BETWEEN FIXINGS. NUT TO BE WELD FIXED TO BOLT

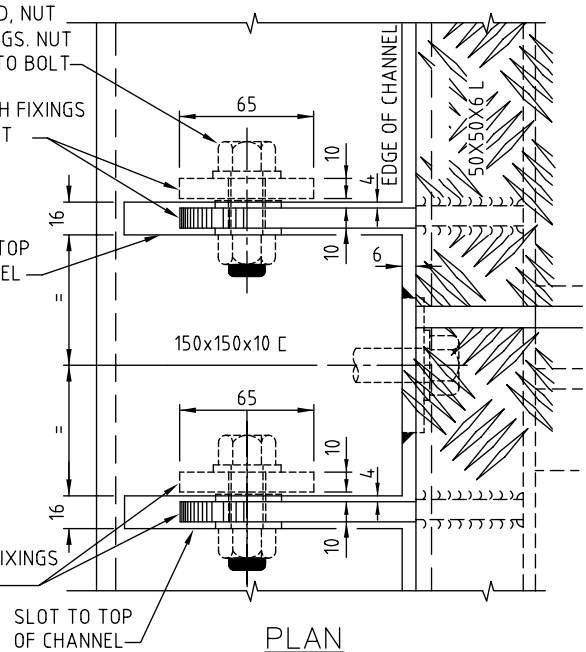
FABRICATE BOTH FIXINGS FROM 65x10 FLAT

SLOT TO TOP OF CHANNEL

FABRICATE BOTH FIXINGS FROM 65x10 FLAT

SLOT TO TOP OF CHANNEL

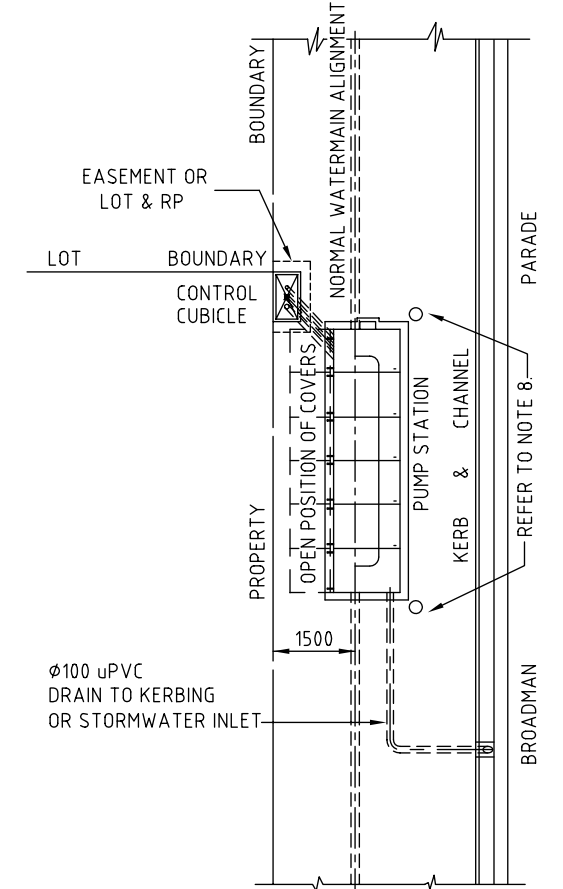
ELEVATION



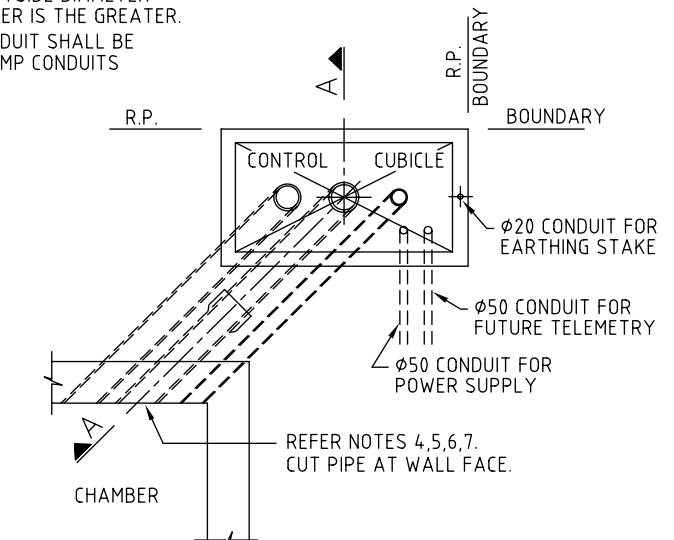
RECESSED HINGE DETAIL

NOTES:

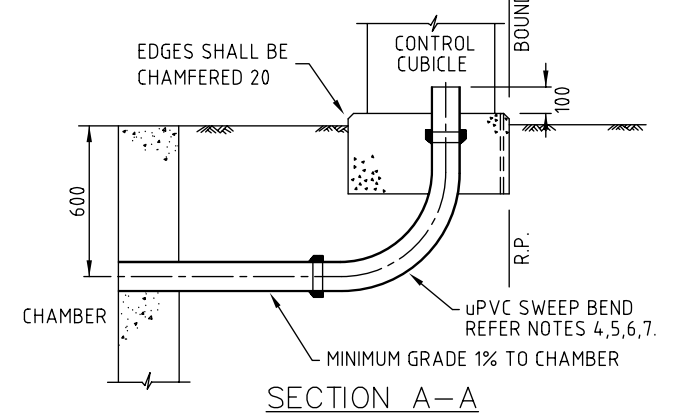
1. LOCATION OF PUMP STATION AND CONTROL CUBICLE SHALL BE AS SHOWN ON THE APPROVED ENGINEERING DRAWINGS.
2. PROVIDE ELECTRICAL CONDUIT TO PUMP STATION CUBICLE IN ACCORDANCE WITH ENERGEX REQUIREMENTS.
3. ALL ALLOY FACES IN CONTACT WITH CONCRETE SURFACES SHALL BE PAINTED WITH BITUMINOUS PAINT.
4. CONDUITS TO BE MINIMUM 63 NOMINAL DIAMETER FOR EACH PUMP AND MINIMUM 50 NOMINAL DIAMETER FOR CONTROL CABLES OR TWICE THE OUTSIDE DIAMETER OF THE INSTALLED CABLE WHICHEVER IS THE GREATER.
5. PUMP CONDUITS AND CONTROL CONDUIT SHALL BE SEPERATED BY A MINIMUM 300. PUMP CONDUITS SHALL BE SEPERATED BY 30.
6. CONDUITS SHALL BE INSTALLED IN ACCORDANCE WITH AS/NZS 3000.
7. CONDUITS SHALL BE IN ACCORDANCE WITH AS.2053.
8. PROVIDE TYPE D BOLLARD, REFER TO G.C.C.C STD DWG No. 05-05-101.
9. DIMENSIONS ARE IN MILLIMETRES UNLESS SHOWN OTHERWISE.



TYPICAL ARRANGEMENT PLAN



PLAN



SECTION A-A

CONTROL CUBICLE DETAILS



THIS DRAWING IS NOT TO BE AMENDED WITHOUT REFERENCE TO STANDARDS COMMITTEE					CONTROLLED DOCUMENT
No.	AMENDMENT	APPROVED	DATE	ISSUED	

DO NOT SCALE TAKE FIGURED DIMENSIONS ONLY	
DRAWN BY	G.C.W
PASSED	D. HAYMAN 08/07/08
APPROVED	R. WENT 08/07/08

STANDARD DRAWING

WATER SUPPLY PUMP STATION

PLAN 3 OF 4

MICROFILMED
STANDARD DRAWING No. 08-06-131
ISSUE 2008 EDITION